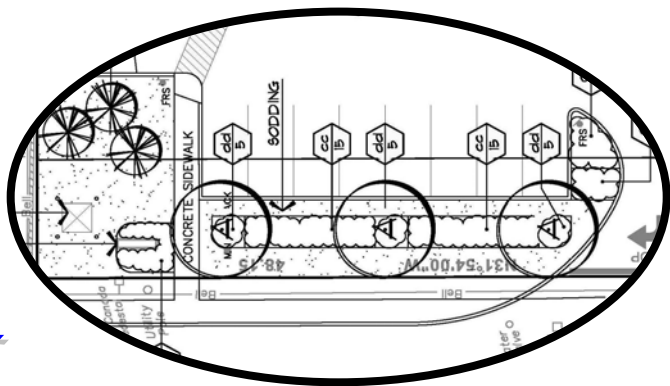




# *Approved Landscape Species List*



**TOWN OF MIDLAND**



August 2010

## Town of Midland Approved Tree Species

Scientific Name	Common Name	Type	Use						Planting		
			Comm	Res	Inst	Urban	Street	Park	Mass	Specimen	
<i>Abies balsamea</i>	Balsam Fir	Conifer	X	X	X						X
<i>Acer pensylvanicum</i>	Striped Maple; Moosewood	Deciduous	X		X			X			X
<i>Acer rubrum</i>	Red Maple	Deciduous		X			X	X			X
<i>Acer saccharinum</i>	Silver Maple	Deciduous		X	X			X			X
<i>Acer saccharum ssp. saccharum</i>	Sugar Maple; Hard Maple	Deciduous	X	X	X		X	X			X
<i>Acer spicatum</i>	Mountain Maple	Deciduous	X	X	X			X			X
<i>Alnus rugosa</i>	Speckled Alder	Deciduous				X	X	X			X
<i>Amelanchier arborea</i>	Juneberry	Deciduous	X	X	X		X	X	X		X
<i>Amelanchier laevis</i>	Smooth Shadbush	Deciduous	X	X	X		X	X	X		X
<i>Betula alleghaniensis (B. lutea)</i>	Yellow Birch	Deciduous	X			X		X	X		X
<i>Betula papyrifera</i>	Paper Birch	Deciduous	X		X			X			X
<i>Carpinus caroliniana</i>	Hornbeam; Blue-Beech	Deciduous	X	X	X	X	X		X		
<i>Carya cordiformis</i>	Bitternut Hickory	Deciduous						X			X
<i>Celastrus scandens</i>	American Bittersweet	Deciduous			X			X			X
<i>Celtis occidentalis</i>	Hackberry	Deciduous	X		X			X			X
<i>Cornus alternifolia</i>	Alternate-Leaved Dogwood	Deciduous	X		X				X		X
<i>Fagus grandifolia</i>	American Beech	Deciduous	X		X			X			X
<i>Fraxinus americana</i>	*White Ash	Deciduous	X		X			X	X		X
<i>Fraxinus nigra</i>	*Black Ash	Deciduous									
<i>Fraxinus pennsylvanica</i>	*Red Ash	Conifer	X	X	X	X	X	X			X
<i>Juniperus virginiana</i>	Red-Cedar	Deciduous	X	X	X			X	X		X
<i>Larix laricina</i>	Tamarack	Deciduous	X		X			X			X
<i>Ostrya virginiana</i>	Ironwood; Hop Hornbeam	Deciduous	X	X	X	X	X	X			X
<i>Picea glauca</i>	White Spruce	Conifer	X	X							X
<i>Pinus resinosa</i>	Red Pine	Conifer						X			X
<i>Pinus strobus</i>	White Pine	Conifer	X	X							X
<i>Populus balsamifera</i>	Balsam Poplar	Conifer									X
<i>Populus grandidentata</i>	Big-Toothed Or Large-Toothed Aspen	Conifer									X
<i>Populus tremuloides</i>	Quaking Aspen	Conifer									X
<i>Prunus americana</i>	American Wild Plum	Deciduous					X		X		X
<i>Prunus nigra</i>	Canada Plum	Deciduous	X		X		X				X
<i>Prunus pensylvanica</i>	Fire Or Pin Cherry	Deciduous						X			X
<i>Prunus serotina</i>	Wild Black Cherry	Deciduous									
<i>Quercus alba</i>	White Oak	Deciduous	X			X		X			X
<i>Quercus macrocarpa</i>	Bur Oak	Deciduous	X		X			X			X
<i>Quercus rubra</i>	Red Oak	Deciduous	X		X			X			X
<i>Rhus typhina</i>	Staghorn Sumac	Deciduous	X		X		X		X		
<i>Salix amygdaloides</i>	Peach-Leaved Willow	Deciduous									X
<i>Salix bebbiana</i>	Bebb's Willow	Deciduous									X
<i>Salix lucida</i>	Shining Willow	Deciduous									X
<i>Salix nigra</i>	Black Willow	Deciduous									X
<i>Thuja occidentalis</i>	Eastern White Cedar	Conifer	X	X	X			X			X
<i>Tilia americana</i>	Linden; Basswood	Deciduous	X		X			X			X
<i>Tsuga canadensis</i>	Hemlock	Conifer		X				X	X		
<i>Ulmus americana</i>	White Or American Elm	Deciduous		X	X	X	X	X			X

Comm = Suitable for use in Commercial Lands  
 Res = Suitable for use in Residential Lands  
 Inst = Suitable for use in Institutional Lands (Schools, hospitals, etc)  
 Urban = have a high tolerance to pollution  
 Street = Can be used as street streets  
 Park = Best suited in a park setting  
 Mass = Best suited when planted in mass (> 2)  
 Specimen = Best suited planted alone

\* Note: These ash trees are susceptible to the Emerald Ash Borer Beetle and should be used as a part of a planting program that includes a range of other tree species

## Town of Midland Approved Shrub Species

Scientific Name	Common Name	Use						Planting	
		Comm	Res	Inst	Urban	Street	Park	Mass	Specimen
<i>Aronia melanocarpa</i>	Black Chokeberry	X		X		X	X	X	
<i>Cephalanthus occidentalis</i>	Buttonbush	X		X			X		X
<i>Gaylussacia baccata</i>	Huckleberry	X	X	X				X	
<i>Juniperus communis</i>	Common Or Ground Juniper	X	X	X	X			X	
<i>Potentilla fruticosa</i>	Shrubby Cinquefoil	X	X	X				X	
<i>Prunus virginiana</i>	Choke Cherry	X	X	X				X	
<i>Rosa blanda</i>	Wild Rose	X	X	X				X	
<i>Salix discolor</i>	Large Pussy Willow	Swamp like areas						X	
<i>Salix eriocephala</i>	Heart-Leaved Willow	Swamp like areas						X	
<i>Salix exigua</i>	Sandbar Willow	Swamp like areas						X	
<i>Sambucus canadensis</i>	Elderberry; Common Elder		X			X		X	
<i>Sambucus racemosa (S. pubens)</i>	Red-Berried Elder		X	X				X	
<i>Spiraea alba</i>	Meadowsweet	Swamp like areas							
<i>Staphylea trifolia</i>	Bladdernut						X	X	X
<i>Taxus canadensis</i>	Canadian Yew; Ground Hemlock	X	X	X				X	
<i>Viburnum cassinoides</i>	Witherod					X	X	X	
<i>Viburnum lentago</i>	Nannyberry; Sheepberry	X	X	X				X	X

<p>Comm = Suitable for use in Commercial Lands  Res = Suitable for use in Residential Lands  Inst = Suitable for use in Institutional Lands (Schools, hospitals, etc)  Urban = have a high tolerance to pollution  Street = Can be used as street streets  Park = Best suited in a park setting  Mass = Best suited when planted in mass (&gt; 2)  Speciman = Best suited planted alone</p>
---

## Town of Midland Approved Grass and Vine Species

Scientific Name	Common Name	Type	Use						Planting	
			Comm	Res	Inst	Urban	Street	Park	Mass	Specimen
<i>Arundo donax</i>	Giant Reed Grass	Grass			X					
<i>Calamagrosis x acutiflora 'Karl Forrester'</i>	Feather Reed Grass	Grass	X	X	X				X	
<i>Chasmanthium latifolium</i>	Northern Sea Oats	Grass	X	X	X				X	
<i>Clematis virginiana</i>	Virgin's Bower	Vine	X	X	X				X	
<i>Miscanthus sinensis 'Gracillimus'</i>	Maiden Grass	Grass	X	X	X				X	
<i>Miscanthus sinensis 'Varigatus'</i>	Striped Grass	Grass	X	X	X				X	
<i>Miscanthus sinensis 'Zebra'</i>	Zebra Grass	Grass	X	X	X				X	
<i>Panicum virgatum 'Northwind'</i>	Northwind Switch Grass	Grass	X	X	X				X	
<i>Panicum virgatum 'Rubrum'</i>	Red Swith Grass	Grass	X	X	X				X	

<p>Comm = Suitable for use in Commercial Lands  Res = Suitable for use in Residential Lands  Inst = Suitable for use in Institutional Lands (Schools, hospitals, etc)  Urban = have a high tolerance to pollution  Street = Can be used as street streets  Park = Best suited in a park setting  Mass = Best suited when planted in mass (&gt; 2)  Speciman = Best suited planted alone</p>
---