



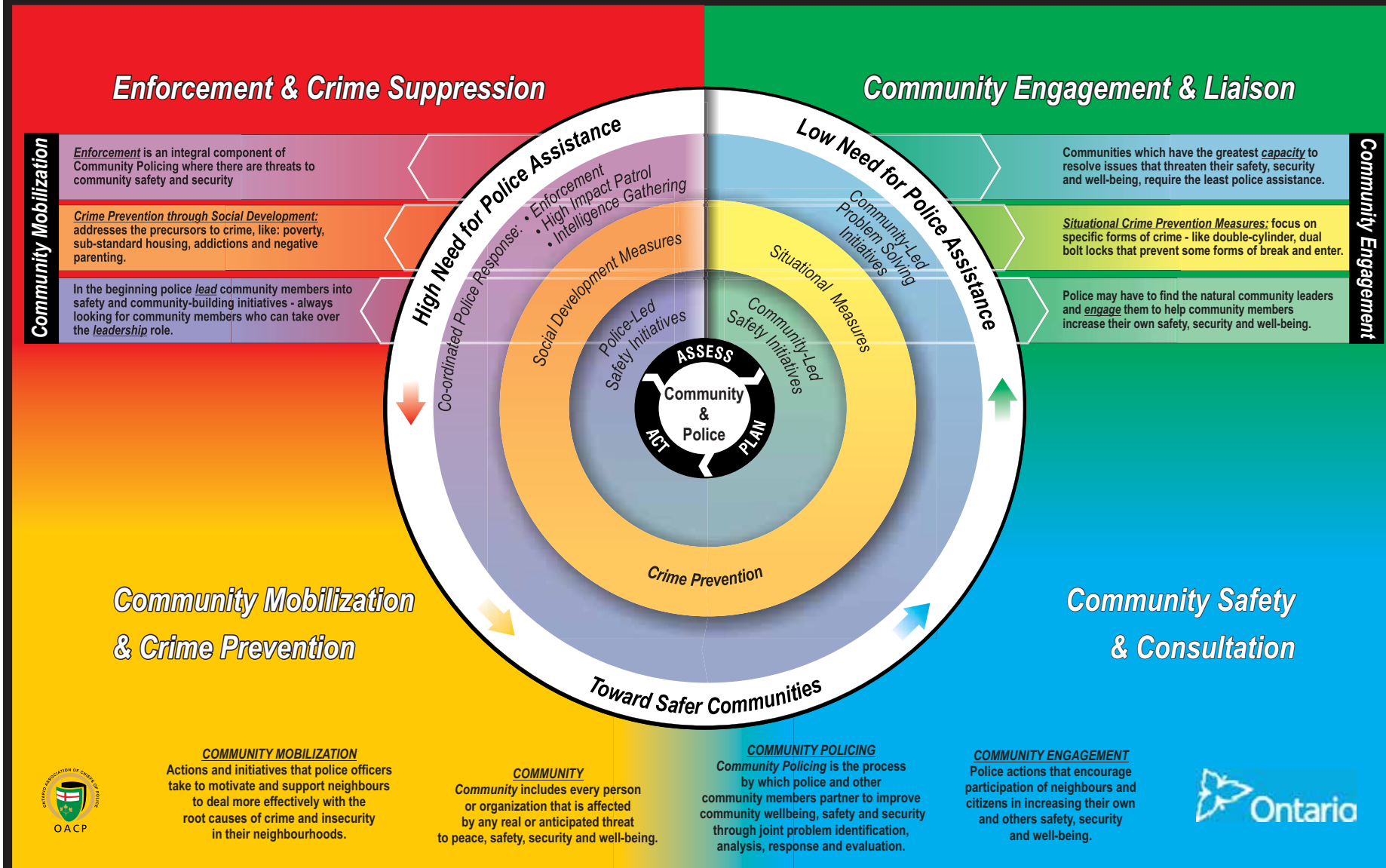
# 2017-2019 ACTION PLAN

AND 2016 PROGRESS REPORT

Southern Georgian Bay  
**DETACHMENT**



# Ontario's Mobilization & Engagement Model of Community Policing



## OUR VISION

Safe Communities...  
A Secure Ontario

## OUR MISSION

Committed to public safety, delivering proactive and innovative policing in partnership with our communities.

## OUR VALUES

Professionalism  
Accountability  
Diversity  
Respect  
Excellence  
Leadership





## Facts and Figures

## Our Detachment

The Southern Georgian Bay Detachment of the Ontario Provincial Police (OPP) is located in the Town of Midland, providing policing services to the Townships of Tiny, Tay and the Town of Penetanguishene. It also provides policing services to a portion of the Township of Georgian Bay, located in the District of Muskoka.

Southern Georgian Bay detachment provides service in both English and French as per the French Language Services Act of Ontario. The Municipalities of Penetanguishene and Tiny have been designated under this Act with 3,900 Francophone members in the area. Municipalities policed by this Detachment are situated along the shores of Georgian Bay. The total population in the Detachment area is in excess of 35,000 people<sup>1</sup>.

It is a popular tourist destination in light of its abundance of waterways, cottages, year round activities, camping and waterfront resorts. Boating is very popular with 11 marinas offering 3,300 wet slips. Tourist attractions include:

- The Martyrs' Shrine
- Ste. Marie Among the Huron's
- The Wye Marsh Wildlife Centre
- The Penetanguishene Historic Military
- The Naval Museum located at Discovery Harbour
- Beaches

The southeast corner of Georgian Bay is the gateway to 30,000 islands and the west entrance to the Trent-Severn Canal System. The population exceeds 100,000 people during the summer months. The availability of snowmobile trails, skiing, and ice fishing also contributes to the area's popular tourist attractions. All major service clubs and organizations are well-represented throughout the detachment area.

The Southern Georgian Bay Detachment is responsible for the policing of 1,200 square kilometers of waterways, the Six-Mile Lake Provincial Park, the Awenda Provincial Park, and the Georgian Bay Islands National Park. Detachment resources used to conduct policing functions include boats, snowmobiles, all-terrain vehicles, bicycles and an 11-member Detachment Auxiliary Unit.

The Town of Penetanguishene has housed the Central North Corrections Centre (CNCC) since November 2001, an 1,184- bed medium-security provincial jail.

Waypoint Centre for Mental Health Care is a fully accredited 312-bed psychiatric hospital located in the Town of Penetanguishene. Waypoint provides an extensive range of acute and longer-term psychiatric inpatient and outpatient services. In addition, Waypoint provides the Province's only maximum secure forensic hospital for clients served by both the mental health and justice systems.

## Overview

**Detachment Personnel** **Table 1.1**

<b>Uniform</b>	<b>TOTAL</b>
Inspector	1.00
Staff Sergeant	1.00
Sergeant	4.00
Constable	51.00
<b>TOTAL Uniform</b>	<b>57.00</b>
<b>TOTAL Civilian</b>	<b>5.24</b>
<b>TOTAL</b>	<b>62.24</b>
<b>TOTAL Auxiliary Hours</b>	<b>2,091</b>

**OPP Detachment Facilities** **Table 1.2**

<b>Facility</b>	<b>2017</b>
Number of Detachments	1
Number of Satellite Locations	1

**Hours (Field Personnel)** **Table 1.3**

	<b>2014</b>	<b>2015</b>	<b>2016</b>	<b>Change 2015/16 (%)</b>
Criminal Code	17,311.50	18,595.75	19,363.00	4.13%
Traffic	5,875.50	7,843.00	7,992.50	0.72%
Patrol	15,935.00	16,472.25	14,891.50	-9.60%
Other	56,599.50	60,783.00	65,465.00	7.87%
<b>TOTAL</b>	<b>95,721.50</b>	<b>103,694.00</b>	<b>107,712.00</b>	<b>3.87%</b>

**Criminal Code & Provincial Statute Charges Laid** **Table 1.4**

	<b>2014</b>	<b>2015</b>	<b>2016</b>	<b>Change 2015/16 (%)</b>
Highway Traffic Act	2,950	4,392	4,148	-5.6%
Criminal Code Traffic	61	115	119	3.5%
Criminal Code Non-Traffic	578	867	683	-21.2%
Liquor Licence Act	79	95	95	0.0%
Other	616	699	701	0.3%
<b>TOTAL</b>	<b>4,284</b>	<b>6,168</b>	<b>5,746</b>	<b>-6.8%</b>

Please refer to endnotes for all data source and note details.

## Community Satisfaction Survey

### Community Satisfaction Survey conducted in 2015

This survey is a tool for gathering public opinion on policing issues and ratings of OPP service delivery. It can serve as:

- a report card detailing how the people served by the OPP rate that service;
- a gauge of public concern about crime and policing issues;
- an indicator for making improvements to police services; and
- a means to measure how Ontarians view the OPP's service delivery.

The OPP Community Satisfaction Survey is a telephone survey conducted with the general public by research company R.A. Malatest & Associates Ltd., on behalf of the OPP. The survey is conducted for each OPP detachment every three years and annually province-wide. Randomly selected telephone numbers and Random Digit Dial were used to sample respondents who were at least 16 years old, where no member of the household was employed by the OPP.

1.	97.7% of respondents felt "very safe" or "safe" in their communities
2.	93.5% of respondents were "very satisfied" or "satisfied" with the ease of contacting the OPP
3.	93.6% of respondents were "very satisfied" or "satisfied" with the quality of police service provided by the OPP
4.	91.4% of respondents were "very satisfied" or "satisfied" with the OPP's ability to work with communities to solve local problems
5.	83.9% of respondents were "very satisfied" or "satisfied" with the OPP's visibility in their community 94.3% of respondents were "very satisfied" or "satisfied" with the OPP's visibility on the highways 88.3% of respondents were "very satisfied" or "satisfied" with the OPP's visibility on the waterways 84.4% of respondents were "very satisfied" or "satisfied" with the OPP's visibility on snowmobile patrols



## Crime Data

### Violent Crimes

Table 2.1

Offences	2014	2015	2016	Change 2015/16 (%)	2016 Clearance Rate (%)
01-Murder	0	0	0		
02-Other Offences Causing Death	0	0	0		
03-Attempt Murder	0	3	0	-100.00%	
04-Sexual Assault	16	15	18	20.00%	66.67%
05-Assault	209	168	316	88.10%	97.47%
06-Abduction	2	2	2	0.00%	100.00%
07-Robbery	3	0	0		
08-Other Crimes Against a Person	52	48	52	8.33%	88.46%
<b>TOTAL</b>	<b>282</b>	<b>236</b>	<b>388</b>	<b>64.41%</b>	<b>94.85%</b>

### Property Crimes

Table 2.2

Offences	2014	2015	2016	Change 2015/16 (%)	2016 Clearance Rate (%)
01-Arson	2	2	1	-50.00%	0.00%
02-Break and Enter	101	113	65	-42.48%	13.85%
03-Theft Over \$5,000	30	37	34	-8.11%	17.65%
04-Theft Under \$5,000	223	212	199	-6.13%	12.06%
05-Have Stolen Goods	8	11	6	-45.45%	100.00%
06-Fraud	53	67	68	1.49%	29.41%
07-Mischief	161	185	160	-13.51%	14.38%
<b>TOTAL</b>	<b>578</b>	<b>627</b>	<b>533</b>	<b>-14.99%</b>	<b>16.51%</b>

Shaded cell indicates percentage change does not allow for dividing by zero.  
Please refer to endnotes for all data source and note details.

### Other Criminal Code

Table 2.3

Offences	2014	2015	2016	Change 2015/16 (%)	2016 Clearance Rate (%)
01-Offensive Weapons	9	8	8	0.00%	12.50%
02-Other Criminal Code *excluding traffic	135	136	133	-2.21%	88.72%
<b>TOTAL</b>	<b>144</b>	<b>144</b>	<b>141</b>	<b>-2.08%</b>	<b>84.40%</b>

### Drugs

Table 2.4

Offences	2014	2015	2016	Change 2015/16 (%)	2016 Clearance Rate (%)
01-Possession	43	40	54	35.00%	94.44%
02-Trafficking	7	9	12	33.33%	91.67%
03-Importation and Production	3	1	4	300.00%	50.00%
<b>TOTAL</b>	<b>53</b>	<b>50</b>	<b>70</b>	<b>40.00%</b>	<b>91.43%</b>

### Federal Statutes

Table 2.5

Offences	2014	2015	2016	Change 2015/16 (%)	2016 Clearance Rate (%)
01-Other Federal Statutes	22	74	101	36.49%	33.33%
<b>TOTAL</b>	<b>22</b>	<b>74</b>	<b>101</b>	<b>36.49%</b>	<b>97.03%</b>

### 2016 Intelligence-Led Policing – Crime Abatement Strategy

Table 2.6

Number of Verifications	Number of Charges
196	89

## Crime Progress Results

**Provincial Targeted Outcome: 1.9% reduction in overall violent crime by 2016**  
**Provincial Targeted Outcome: 11.3% reduction in overall property crime by 2016**

PRIORITY	PROGRESS
Violent Crime: Abuse Issues including domestic violence (DV) with related offences including, but not limited to, assault, sexual assault, threatening and other crimes against a person	<p><b>Relevant Activity Underway</b></p> <ul style="list-style-type: none"> <li>• Reported assault occurrences increased in 2016 by 88.10%. Factors contributing to this include an increase of offences at both the Central North Correction Centre and Waypoint.</li> <li>• Collaborative responses to domestic violence continued with stakeholders and the detachment’s Intelligence-Led Policing Crime Abatement Strategy.</li> <li>• Engagement and educational efforts were led by our Domestic Violence Coordinator.</li> <li>• Public education, awareness strategies and increased training for officers have been implemented for managing human trafficking crimes.</li> </ul>
Property Crime: Break and Enter, Mischief to property (including graffiti) and Fraud	<p><b>Success Demonstrated</b></p> <ul style="list-style-type: none"> <li>• Property crimes decreased by 14.99% in 2016. Break and Enter and Mischief occurrences were reduced significantly.</li> <li>• These successes can be attributed to many factors, including: <ul style="list-style-type: none"> <li>○ Collaborative and educational efforts such as the OPP ‘Lock It or Lose It’ campaigns.</li> <li>○ The Safeguard Ontario program providing training to homeowners on property crime prevention through environmental design.</li> <li>○ Focused Patrol strategies based on analytics.</li> <li>○ Successful investigations conducted by officers.</li> <li>○ The Intelligence-Led Policing Crime Abatement Strategy.</li> <li>○ The Detachment’s Street Crime Unit, with an additional position added for 2017.</li> </ul> </li> </ul>
Illicit Drugs (including Opioids)	<p><b>Relevant Activity Underway</b></p> <ul style="list-style-type: none"> <li>• Illicit drug occurrences increased by 40% in 2016, with a clearance rate of 91.43%.</li> <li>• Opioid related occurrences such as fentanyl and carfentanil are increasing. Southern Georgian Bay Detachment is committed to educating and promoting safety strategies to reduce the growing trend.</li> </ul>
Reducing victimization from cyber and/or technology-enabled crime through engagement and education	<p><b>Relevant Activity Underway</b></p> <ul style="list-style-type: none"> <li>• Technology-enabled crimes continue to rise. Increased training, innovative strategies and modernizing equipment are improving investigators’ abilities to investigate and prevent such crimes.</li> <li>• Education and engagement strategies led by the Detachment Community Services Officer are being implemented to prevent victimization related to technology-enabled crime.</li> </ul>

## Traffic Data

The OPP is focused on the “Big Four” factors in deaths and injuries: lack of occupant restraint, aggressive driving including speeding, impaired and distracted driving.

**Motor Vehicle Collisions (MVC) by Type** Table 3.1  
(Includes roadway, off-road and motorized snow vehicle collisions)

	2014	2015	2016	Change 2015/16 (%)
Fatal MVCs	4	6	2	-66.67%
Personal Injury MVCs	69	79	64	-18.99%
Property Damage MVCs	409	325	330	1.54%
<b>TOTAL MVCs</b>	<b>482</b>	<b>410</b>	<b>396</b>	<b>-3.41</b>
Alcohol-related MVCs	17	22	13	-40.91%
Animal-related MVCs	52	43	74	72.09%
Persons Killed	4	7	2	-71.43%
Persons Injured	105	108		

**Fatalities in Detachment Area** Table 3.3

Roadways	2014	2015	2016	Change 2015/16 (%)
Fatal Incidents	1	5	0	-100.00%
Persons Killed	1	6	0	-100.00%
Alcohol-related	0	1	0	-100.00%

Marine	2014	2015	2016	Change 2015/16 (%)
Fatal Incidents	0	0	0	
Persons Killed	0	0	0	
Alcohol-related	0	0	0	

**Primary Causal Factors in Fatal MVCs on Roadways** Table 3.2

		2014	2015	2016	Change 2015/16 (%)
<b>The Big Four</b>	# of Fatal MVCs where speed is a Factor	0	1	0	-100.00%
	# of Fatal MVCs where alcohol is a Factor	0	1	0	-100.00%
	# of Fatalities where lack of seatbelt* use is a Factor	0	1	0	-100.00%
	# of Fatal MVCs where driver inattention is a Factor	1	0	0	
# of Fatal MVCs where wildlife is a Factor		0	0	0	
<b>Total Fatal MVCs</b>		<b>1</b>	<b>5</b>	<b>0</b>	

Off-Road Vehicles	2014	2015	2016	Change 2015/16 (%)
Fatal Incidents	2	0	0	
Persons Killed	2	0	0	
Alcohol-related	0	0	0	

Motorized Snow Vehicles	2014	2015	2016	Change 2015/16 (%)
Fatal Incidents	1	1	1	0.00%
Persons Killed	1	1	1	0.00%
Alcohol-related	0	1	1	0.00%

*Shaded cell indicates percentage change does not allow for dividing by zero.*

*Diagonal shaded cell indicates that the count of injured persons was not available at time of extract due to issues with Involved Persons in the eCRS database*

*Please refer to endnotes for all data source and note details*

## Traffic Progress Results

*Provincial Targeted Outcome: 1.7% reduction in total motor vehicle collisions by 2016*

PRIORITY	RESULTS
<p>The Big Four causal factors of fatal, personal injury and property damage collisions on roadways, waterways and trails: impaired (alcohol/drug), speeding/ aggressive and inattentive/distracted driving and lack of occupant restraint and safety equipment</p>	<p><b>Relevant Activity Underway</b></p> <ul style="list-style-type: none"> <li>• A two-member traffic management unit was dedicated to traffic duties for ten months in 2016. The 'Big 4' driving behaviours (speeding, distracted driving, lack of seatbelt use and impaired driving) were the focus of education and enforcement activities.</li> <li>• Motor vehicle collisions decreased by 3.41% in 2016.</li> <li>• Collisions involving wildlife increased by 72%.</li> <li>• 14 Focused Patrols were completed in 2016. Analytics will continue to determine best practices for traffic enforcement and education.</li> <li>• Officers participated in annual provincial traffic initiatives targeting the 'Big 4' causal factors. Participation in these initiatives will continue in 2017.</li> </ul>

## Other Policing Priorities Progress Results

PRIORITY	RESULTS
Calls for service involving persons with mental health illness or in a mental health (MH) crisis through engagement and education	<p><b>Relevant Activity Underway</b></p> <ul style="list-style-type: none"> <li>• Southern Georgian Bay OPP Detachment is a collaborative partner at “The North Simcoe Situational Table” as a result of implementing <i>Ontario’s Mobilization and Engagement Model of Community Policing</i>.                             <ul style="list-style-type: none"> <li>○ The group meets weekly to determine strategies to assist members at elevated risk in the community.</li> <li>○ Community members have received appropriate care and assistance from local stakeholders as a result of this collaborative response model.</li> </ul> </li> <li>• Detachment officers continue to broaden skill sets by attending Crisis Intervention Training offered by area mental health service providers.</li> <li>• Southern Georgian Bay Detachment works in concert with a dedicated mental health coordinator whose network extends to agencies in the North Simcoe area.</li> </ul>
Reducing 9-1-1 “Pocket Dials” through engagement and education	<p><b>Relevant Activity Underway</b></p> <ul style="list-style-type: none"> <li>• Efforts to educate the public on accidental ‘pocket dials’ have included discussions with area schools through the use of our 911 simulator, public service groups, and municipal partners.</li> <li>• Numerous press releases to promote proper cell phone care and handling have been disseminated through the Community Services Officer.</li> <li>• Such efforts have contributed to a reduction in ‘pocket dials’ in 2016.</li> </ul>

**9-1-1 Pocket Dials**

**Table 4.1**

Call Type	2014	2015	2016
Unknown Wireless	749	591	474
Officer Confirmed Pocket Dial	135	66	53
% Officer Confirmed	15%	10%	10%

**2016 Mental Health Strategy Data**

**Table 4.2**

Occurrences (contact made)*	Occurrences (no contact made)*	Occurrences (empty BMHS forms)	Occurrences (complete BMHS forms)	BMHS Compliance
244	83	0	243	100%

## List of Priorities for 2017-2019

The OPP's action planning process ensures compliance with the Adequacy and Effectiveness of Police Services Regulation (Adequacy Standards) filed as O. Reg. 3/99 in 1999.

Through assessment, analysis and consultation, the following priorities were identified under three categories: crime, traffic and other policing. The priorities reflect provincial and regional issues. Subsequent local analysis and consultation will further identify the specific areas of focus for this region. Priorities will be addressed by effective management strategies combining engagement, education and enforcement. Operationalized within the construct of Ontario's Mobilization and Engagement Model of Community Policing these strategies will provide the foundation for sustainable community safety and reduced victimization.

CRIME	TRAFFIC	OTHER POLICING PRIORITIES
<p><i>Reduce Harm and Victimization</i></p> <p>Violent Crime</p> <ul style="list-style-type: none"> <li>○ Sexual Assaults</li> <li>○ Assaults</li> <li>○ Human Trafficking</li> <li>○ Other Crimes Against a Person</li> </ul> <p>Property Crime</p> <ul style="list-style-type: none"> <li>○ Break and Enters</li> <li>○ Mischief</li> <li>○ Thefts</li> </ul> <p>Illicit Drugs (including Opioids)</p> <p>Cyber Crime</p>	<p><i>Change driver behaviours responsible for injuries and deaths on roadways, waterways and trails</i></p>	<p><i>Continue collaborating for an enhanced police response to persons experiencing a mental health crisis</i></p> <hr/> <p><i>Partner to reduce the impact/risk/frequency of false alarms and 911 pocket dials</i></p>

## CRIME

### *Violent Crime – Sexual Assaults, Assaults, Human Trafficking and Other Crimes Against a Person*

Priority Description:

- Violent crime continues to be a priority for the Southern Georgian Bay Detachment.
- Domestic violence continues to be linked to many violent crimes.
- Human trafficking has been identified as a community concern with connections to violent crimes.
- Significant resources will be committed to the prevention and investigation of violent crime occurrences.

MANAGEMENT STRATEGIES		ACTIVITIES	TARGETED OUTCOME
<b>Prevention</b>	<b>Engagement / Education</b>	<ul style="list-style-type: none"> <li>• Continue to liaise with Victim Services, Domestic Assault Review Team, Crown Attorneys, Probation and Parole officials and local shelters to support victims in education, prosecution and personal safety.</li> <li>• Southern Georgian Bay’s Domestic Violence Coordinator will continue to take the lead in developing response strategies and ensuring engagement between police and community partners.</li> <li>• Continue to participate in Sexual Assault Awareness Month along with community partners to promote programs available to victims within the Community.</li> <li>• The Domestic Violence Coordinator and School Resource Officers will participate in educating youth on sexual assault prevention measures and reporting.</li> <li>• Attend secondary schools to deliver lesson plans on personal safety.</li> <li>• Develop media strategies to engage the community.</li> <li>• Coordinate and participate with community partners such as VWAP (Victims Witness Assistance Program), CAS (Children’s Aid Society), and VCARS (Victim Crisis Assistance and Referral Service)</li> <li>• Participate in public forums intended to promote awareness and violent crime prevention strategies.</li> <li>• Human Trafficking Information Sessions for all officers to be completed.</li> </ul>	<p><b>Provincial Target</b></p> <p><i>2% reduction in overall violent crime by 2019.</i></p> <p><i>Provincial targeted outcomes are based on projections derived from trend analysis of 2012-2016 actual occurrence data</i></p>
	<b>Enforcement</b>	<ul style="list-style-type: none"> <li>• Ensure OPP Policy and Ministry guidelines are followed in calls for service where violent crime is present.</li> <li>• Maintain daily reviews of occurrences by the Domestic Violence Coordinator. Engage follow-up as required.</li> <li>• Continue participation in the Intelligence-led Crime Abatement Strategy for repeat offenders</li> </ul>	

## CRIME

### *Property Crime – Break and Enters, Thefts and Mischief*

Priority Description:

- Many property crimes are linked to illicit drug activity.
- Proactive and educational strategies will continue to be implemented to reduce and prevent property crimes.

MANAGEMENT STRATEGIES		ACTIVITIES	TARGETED OUTCOME
<b>Prevention</b>	<b>Engagement / Education</b>	<ul style="list-style-type: none"> <li>• Detachment officers will provide information to residents and business owners on property crime prevention strategies.</li> <li>• Media releases and resources from Community Safety Services will educate and provide awareness about property crime occurrences and prevention strategies.</li> <li>• Detachment Auxiliary Officers will assist with:                             <ul style="list-style-type: none"> <li>○ Delivery of the ‘Safeguard Ontario’ program offered to victims of break and enter offences. This program is designed to help residents prevent subsequent break and enter offences through environmental design.</li> <li>○ Ongoing delivery of the ‘Lock It or Lose It’ campaign aimed at theft prevention.</li> </ul> </li> <li>• The Community Safety Street Crime Unit will maintain relationships with neighbouring police services, Ontario Probation and Parole, other enforcement agencies and area pawn shops, to improve information-sharing during the investigation of property crimes.</li> <li>• Utilize and promote Crime Stoppers as an effective tool for aiding investigations.</li> <li>• Utilize analytics to effectively deploy resources.</li> </ul>	<p style="text-align: center;"><b>Provincial Target</b></p> <p style="text-align: center;"><i>2% reduction in overall property crime by 2019.</i></p> <p style="text-align: center;"><i>Provincial targeted outcomes are based on projections derived from trend analysis of 2012-2016 actual occurrence data</i></p>
	<b>Enforcement</b>	<ul style="list-style-type: none"> <li>• The Community Safety Street Crime Unit shall engage with the regional team devoted to the investigation of property crimes and illicit drug offences.</li> <li>• Ongoing monitoring of offender compliance with court-imposed conditions through the Intelligence-led Policing Crime Abatement Strategy.</li> <li>• Ongoing analysis of data to increase frontline deployment efficiencies.</li> <li>• Ongoing Focused Patrols targeting crime prevention and offender apprehension.</li> <li>• Acquire Crime Unit, Forensic Identification Section, Scenes of Crime Officers and the Regional Support Team expertise as required.</li> </ul>	



## CRIME

### *Illicit Drugs (including Opioids)*

Priority Description:

- Illicit drugs are often related to violent and property crimes, elevating risk to the safety of communities.
- Opioid consumption such as fentanyl and carfentanil is rising, resulting in unintended and tragic loss of life. Southern Georgian Bay detachment is increasing its commitment to education, promotion of safety and strategy development in response.
- Opioid and illicit drug activities may often be associated to persons affected by mental health needs. Police response to community members in need of mental health support will increase opportunities to positively impact crime related to illicit drugs.

MANAGEMENT STRATEGIES		ACTIVITIES	TARGETED OUTCOME
<b>Prevention</b>	<b>Engagement / Education</b>	<ul style="list-style-type: none"> <li>• The Detachment School Resource Officer will promote drug-free lifestyles while delivering the OPP KIDS program to local schools.</li> <li>• Messaging will be provided through press releases and the distribution of materials from Community Safety Services during community events.</li> <li>• Detachment members will support and participate in the annual 'Drug Drop off Day'.</li> <li>• The Community Safety Street Crime Unit will maintain relationships with the Drug Enforcement Unit, neighbouring police services, Ontario Probation and Parole and other agencies to improve information-sharing during drug investigations.</li> <li>• Identified persons at risk of harm due to drug use or mental health will be discussed at the area Situation Table (North Simcoe Situational Table). Appropriate services will be offered to those in need of support.</li> <li>• Ongoing training on illicit drug investigations will be provided.</li> <li>• Utilize and promote Crime Stoppers as an effective tool to aid illicit drug investigations.</li> </ul>	<p><i>No Provincial target has been determined at this time. The reporting of achievements will be based on:</i></p> <ul style="list-style-type: none"> <li>• <i>Possession, trafficking and importation and production statistics (refer to pg. 7, Table 2.4)</i></li> </ul>
<b>Enforcement</b>		<ul style="list-style-type: none"> <li>• The Community Safety Street Crime Unit will be engaged with the dedicated regional team devoted to the investigation of property crimes and illicit drug offences.</li> <li>• Offender compliance with court-imposed conditions will be ongoing through the Intelligence-led Policing Crime Abatement Strategy.</li> <li>• Data analysis will be used to provide timely information to frontline officers on patterns and trends, enabling efficient deployment of resources.</li> <li>• Focused Patrols will be implemented in response to illicit drug crimes.</li> <li>• The Drug Enforcement Unit, the Forensic Identification Section, the Scenes of Crime Officers and the Regional Support Team will provide investigational support as required.</li> </ul>	

## CRIME

*Reducing victimization from cyber and/or technology-enabled crime through engagement and education*

Priority Description:

- Many crimes consist of a digital component, including identity theft, fraud, and online bullying.
- Southern Georgian Bay Detachment members will remain current with the OPP Cyber Strategy, utilizing modern technology to effectively investigate and prevent technology-enabled crimes.
- Education is key to preventing victimization.

MANAGEMENT STRATEGIES		ACTIVITIES	TARGETED OUTCOME
<b>Prevention</b>	<b>Engagement / Education</b>	<ul style="list-style-type: none"> <li>• Community Services Officers will educate community members commonly targeted in online frauds and identity theft in prevention strategies.</li> <li>• Media releases and resources from Community Safety Services will provide awareness on cybercrime patterns and trends.</li> <li>• Crime Stoppers will continue to be an effective aid for cybercrime investigations.</li> <li>• Members will be trained on the OPP Cyber Strategy.</li> <li>• Resources required will be made available to assist with investigations.</li> </ul>	<p><i>Standardized tracking and reporting for this provincial priority area is currently being explored and defined organizationally. Achievements will be based on prevention activities until further established.</i></p>
<b>Enforcement</b>		<ul style="list-style-type: none"> <li>• Specialized OPP units, such as the Anti-Rackets Bureau, the Provincial Operations Intelligence Bureau, the Electronic Crimes Section and the Child Sexual Exploitation Unit will be utilized for investigative support as required.</li> <li>• Members will utilize improved investigative processes such as the 'Digital Field Triage Program' to expeditiously retrieve digital evidence from cell phones.</li> </ul>	

## TRAFFIC

*The Big Four causal factors of fatal, personal injury and property damage collisions on roadways, waterways and trails: impaired (alcohol/drug), speeding/aggressive and inattentive/distracted driving and lack of occupant restraint and safety equipment*

- In 2016, enforcement increased in distracted driving and seatbelt offences.
- Officers continue to participate in annual provincial traffic initiatives targeting the 'Big 4' causal factors.
- Efforts are focused on consistent engagement, educational and enforcement strategies to reduce collisions, fatalities and injuries.

MANAGEMENT STRATEGIES		ACTIVITIES	TARGETED OUTCOME
<b>Prevention</b>	<b>Engagement / Education</b>	<ul style="list-style-type: none"> <li>• Partnerships will be maintained with the Ministry of Transportation, Simcoe County and the four adjacent municipalities.</li> <li>• Opportunities will be explored to implement environmental design options intended to reduce and prevent collisions. Strategies to reduce and prevent animal-related collisions will be ongoing.</li> <li>• Media releases will educate and provide awareness on serious traffic occurrences, enforcement initiative results and collision prevention strategies.</li> <li>• Partnerships with the Ministry of Transportation, neighbouring detachments and OPP traffic units during Commercial Motor Vehicle enforcement initiatives will be maintained.</li> <li>• The Ministry of Natural Resources and neighbouring detachments will be engaged during motorized snow vehicle and marine patrols.</li> <li>• Officers will participate in child and infant car seat clinics with the Simcoe County Health Unit.</li> <li>• Officers will attend public events to promote safe boating practices.</li> <li>• Officer skill sets will be enhanced through training in commercial motor vehicle enforcement, collision investigation, drug recognition enforcement, and highway enforcement.</li> </ul>	<p>0.5% reduction in total motor vehicle collisions by 2019.</p> <p><i>* Provincial targeted outcomes are based on projections derived from trend analysis of 2012-2016 actual occurrence data</i></p>
	<b>Enforcement</b>	<ul style="list-style-type: none"> <li>• Officer visibility and enforcement of the 'Big 4' driving behaviours will be ongoing.</li> <li>• Officers will continue to participate in provincial traffic safety campaigns designed to reduce high-risk driving behaviours.</li> <li>• Data analysis will determine efficient and effective deployment of resources.</li> <li>• Ongoing partnerships and use of specialized traffic enforcement units during local traffic initiatives and marine/motorized snow vehicle patrols will be prioritized.</li> <li>• 'Reduce Impaired Driving Everywhere (RIDE)' programs will be consistently conducted throughout the year.</li> <li>• Automated Licence Plate Reader (ALPR) technology will be employed to reduce incidents caused by the 'Big 4' driving behaviors.</li> </ul>	

## Other Policing Priorities

*Continue collaborating for an enhanced police response to persons experiencing a mental health crisis*

- Effective police response to mental health crises requires collaboration and engagement from several community stakeholders.
- Officer time dedicated to hospital assessments averaged 1 hour and 29 minutes per occurrence in 2016.

MANAGEMENT STRATEGIES		ACTIVITIES	TARGETED OUTCOME
<b>Prevention</b>	<b>Engagement / Education</b>	<ul style="list-style-type: none"> <li>• Officers will maintain a 100% compliance with Brief Mental Health Screener submissions.                             <ul style="list-style-type: none"> <li>○ This will enable effective communication between police, health care providers, and social service agencies.</li> </ul> </li> <li>• Officers will collaborate with social agencies at the local Situation Table (North Simcoe Situational Table) to assist individuals experiencing mental health crises.</li> <li>• Partnerships with area hospitals will be pursued to reduce officer wait times for mental health assessments.</li> <li>• Officers will receive enhanced training related to mental health response strategies.</li> <li>• Ongoing strategies will focus on employee wellness to promote physical and mental health and a supportive workplace culture.                             <ul style="list-style-type: none"> <li>○ These strategies will include offering internal and external resources to assist with the maintenance of members' mental health and encouraging members to obtain their annual 'Ontario Police Fitness Award.'</li> </ul> </li> </ul>	<p><i>No Provincial target has been determined at this time. The methodology and reporting on achievements will be based:</i></p> <ul style="list-style-type: none"> <li>• <i>100% compliance and accuracy of completed InterRai Brief Mental Health Screener forms(began tracking June 2014)</i></li> </ul>

## Other Policing Priorities

*Partner to reduce the impact/risk/frequency of false alarms and 911 pocket dials*

- False alarm incidents and 911 “pocket dials’ are high risk occurrences requiring a two-officer response.
- Southern Georgian Bay detachment officers responded to numerous false alarm calls and 911 ‘pocket dials’ in 2016.
- Several locations incurred multiple false alarm occurrences while 911 ‘pocket dials’ increased with the influx of tourists.
- Police resources are unnecessarily depleted.

MANAGEMENT STRATEGIES		ACTIVITIES	TARGETED OUTCOME
<b>Prevention</b>	<b>Engagement / Education</b>	<ul style="list-style-type: none"> <li>• Media releases and other educational opportunities will address:                             <ul style="list-style-type: none"> <li>○ Permanent/seasonal residents and business owners regarding the negative impacts false alarm occurrences cause on policing resources.</li> <li>○ Inform residents and tourists regarding the negative effects of 911 ‘pocket dials’. This will include engaging ski resorts and organizers of large summer events to assist educating patrons on 911 ‘pocket dial’ occurrences.</li> </ul> </li> <li>• Engage municipal officials to strategize towards the reduction and prevention of false alarm occurrences.</li> </ul>	<p><i>Reporting on achievements will be based on engagement and education activities.</i></p>

---

## Endnotes

### Table 1.1 Detachment Personnel

Source: Ontario Public Service, 2016/12/31 Workforce Information Network Employee Extract, 2017/01/19

Notes: 1. Measure is Staff Strength Full-Time Equivalent (ssFTE). 2. Excludes students, seasonal, interns and all leaves of absence. 3. Data reflects employees who are "active" in WIN (includes employees using pre-retirement credits to remain on payroll leading up to official retirement, although not available operationally.)

### Table 1.3 Hours (Field Personnel)

Source: Ontario Provincial Police, Daily Activity Reporting (DAR) System, Business Intelligence (BI) Cube. (2017/02/25)

Note: Based on Total hours of activity reported in DAR under selected Obligated Duty Codes (CCC, Traffic, Patrol, Total) reported to Home Location.

The % change is based on last year over previous year.

### Table 1.4 Criminal Code & Provincial Statute Charges Laid

Source: Ministry of the Attorney General Integrated Court Offence Network (ICON) (2017/02/15)

Note: Charges are based on date charge added into the court system (ICON) and not date of offence.

"Other" charges is comprised of CAIA, Other Provincial & Federal Offences including drug offences.

The % change is based on last year over previous year.

### Tables 2.1, 2.2, 2.3, 2.4, 2.5

Source: Records Management System (RMS Niche) All Offence Level BI Cube, (2017/04/22)

Note: Actual occurrences, Stats Can Valid occurrences only, Non-FN Coverage Types only, Primary Offence Level only, Violent & Property Crime, Other Criminal Code and Federal Statute categories aligned with public reporting standards.

The % change is based on last year over previous year.

For a more detailed explanation of Uniform Crime Reporting Codes see Statistics Canada, Uniform Crime Reporting at [www.statcan.gc.ca](http://www.statcan.gc.ca)

### Table 2.1 Violent Crimes

#### Corresponding Primary Offence Levels

01\* Murder 1st Degree, Murder 2nd Degree, Manslaughter, Infanticide

02 Criminal Negligence Causing Death, Other Related Offences Causing Death

03 Attempted Murder, Conspire to Commit Murder

04 Aggravated Sexual Assault, Sexual Assault with a Weapon, Sexual Assault, Other Criminal Code \* Sec. 151 – Sec. 160, Sexual Interference, Invitation to Sexual Touching, Sexual Exploitation, Sexual Exploitation of a Person with a Disability, Incest, Corrupting Morals of a Child, Sexually Explicit Material to Child with Intent, Luring a Child via a Computer, Anal Intercourse, Bestiality – Commit/Compel/Incite Person, Voyeurism

05 Aggravated Assault Level 3, Assault with a Weapon, Assault Level 1, Unlawfully Causing Bodily Harm, Discharge Firearm with Intent, Using Firearm (or imitation) in commission of offence, Pointing a Firearm, Assault Peace Officer, Assault Peace Officer with a Weapon OR Cause Bodily Harm, Aggravated Assault on Peace Officer, Criminal Negligence – Bodily Harm, Trap Likely to or Cause Bodily Harm, Other Assaults / Admin Noxious thing

06 Kidnapping / Confinement, Kidnapping, Forcible Confinement, Hostage Taking, Trafficking in Persons, Abduction Under 14, Abduction Under 16, Remove Child from Canada, Abduction Contravening A Custody Order, Abduction – No Custody Order

07 Robbery, Robbery of Firearms

08 Extortion, Intimidation of a Justice System Participant or a Journalist, Intimidation of a Non-Justice Participant, Criminal Harassment, Threatening / Indecent Phone Calls, Utter Threats, Explosives, Arson – Disregard for Human Life, Other Criminal Code \* against public order

\*Homicide Data is extracted from Homicide Survey

### Table 2.2 Property Crimes

#### Corresponding Primary Offence Levels

01 Arson

02 Break & Enter, Break & Enter – Firearms, Break & Enter – Steal firearm from motor vehicle

03 Theft Over, Theft Over \$5,000 – Motor Vehicle, Theft from Motor Vehicles Over \$5,000, Theft Over \$5,000 Shoplifting, Theft of Motor Vehicle

04 Theft Under \$5,000, Theft Under \$5,000 – Motor Vehicle, Theft from Motor Vehicles Under \$5,000, Theft Under \$5,000 Shoplifting

05 Possession of Stolen Goods, Trafficking in Stolen Goods over \$5,000 (incl. possession with intent to traffic), Possession of Stolen Goods over \$5,000, Trafficking in Stolen Goods under \$5,000 (incl. possession with intent to traffic), Possession of Stolen Goods under \$5,000

06 Fraud, Identity Theft, Identity Fraud

07 Mischief, Mischief to Property Over \$5,000 Exp., Mischief to Property Under \$5,000 Exp., Mischief to Religious Property Motivated by Hate, Altering / Destroying / Removing a vehicle identification number

---

### Table 2.3 Other Criminal Code

#### Corresponding Primary Offence Levels

01 Offensive Weapons – Explosives, Use of Firearm in Offence, Offensive Weapons – Weapons Trafficking, Possess Firearm while prohibited, Other Criminal Code \* Sec. 78 – Sec. 96, Import / Export – Firearm / Weapon / Ammunition / Device, Offensive Weapons – Point Firearm, Other Criminal Code \* Sec. 105 – Sec. 108, Breach of Firearms Regulation – Unsafe Storage  
02 Prostitution – Bawdy House, Live on avails of prostitution, Parent / Guardian Procure sexual activity, Prostitution under 18 – Procuring, Prostitution – Other Prostitution, Betting House, Gaming House, Other Gaming and Betting, Bail Violations, Counterfeit Money, Disturb the Peace, Escape Custody, Indecent Acts, Child Pornography, Voyeurism, Public Morals, Lure Child via Computer, Obstruct Public Peace Officer, Prisoner Unlawfully at Large, Trespass at Night, Fail to Attend Court, Breach of Probation, Threatening / Harassing Phone Calls, Utter Threats to Property / Animals, Advocating Genocide, Public Incitement of Hatred, Unauthorized record for sale, rental, comm. Distribution, Other Criminal Code \* Sec. 46 – Sec. 78.1, Property or Services for Terrorist Activities, Terrorism – Property, Participate in Activity of Terrorist Group, Facilitate Terrorist Activity, Instruct Terrorist Act, Harbour or conceal a Terrorist, Hoax Terrorism, Offensive Weapons – Careless use of firearms, Bribery / Perjury, Other Criminal Code \* Sec. 176 – Sec. 182, Interception / Disclosure of Communication, Other Criminal Code \* Sec. 215 – Sec. 319, Other Criminal Code \* Sec. 337 – Sec. 352, Other Criminal Code \* Sec. 415 – Sec. 427, Intimidation of Justice System Participant, Other Criminal Code \* Sec. 437 – Sec. 447, Offences Related to Currency, Proceeds of Crime, Attempts, Conspiracies, Accessories, Instruct Offence for Criminal Organization, Commission of offence for Criminal Organization, Participate in Activities of Criminal Organization, Other Criminal Code \* Sec. 462 – Sec. 753

### Table 2.4 Drugs

#### Corresponding Primary Offence Levels

01 Possession–Heroin, Possession–Cocaine, Possession–Other Controlled Drugs and Substances Act (CDSA), Possession–Cannabis, Possession–Methamphetamine (Crystal Meth), Possession–Methylenedioxyamphetamine (Ecstasy)  
02 Trafficking–Heroin, Trafficking–Cocaine, Trafficking–Other CDSA, Trafficking–Cannabis, Trafficking–Methamphetamine (Crystal Meth), Trafficking–Methylenedioxyamphetamine (Ecstasy)  
03 Import/Export–Heroin, Import/Export–Cocaine, Import/Export–Other Drugs, CDSA \*Sec.6 Import/Export

### Table 2.5 Federal Statutes

#### Corresponding Primary Offence Levels

01 Other Federal Statutes, Bankruptcy Act, Income Tax Act, Canada Shipping Act, Canada Health Act, Customs Act, Competition Act, Excise Act, Youth Criminal Justice Act (YCJA), Immigration and Refugee Protection Act, Human Trafficking (involving the use of abduction, fraud, deception or use of threat), Human Smuggling fewer than 10 persons, Human Smuggling 10 persons or more, Firearms Act, National Defence Act, Other Federal Statutes

### Table 2.6 Intelligence-Led Policing – Crime Abatement Strategy

Source: Records Management System (RMS Niche) Extract Report, (2017/04/24)

Note: 2012 was a transition year for ILP Data from DAR to Niche therefore data cannot be compared to previous Action Plans. Information is derived from the ILP-CAS Persons Search Report RMS Niche.

### Table 3.1 Motor Vehicle Collisions (MVC) by Type

#### (Includes roadway, off-road and motorized snow vehicle collisions)

Source: Ontario Provincial Police, Collision Reporting System (CRS), (2017/02/28)

Note: Count of Reportable Fatal, PI and PD Collisions entered into the eCRS for MVC, MSV and ORV Report Types regardless of status, excluding FN detachments. Count of Alcohol-related collisions where Alcohol-Involved indicated as Yes in eCRS.

The % change is based on last year over previous year.

### Table 3.2 Primary Causal Factors in Fatal MVCs on Roadways

Source: Ontario Provincial Police Collision Reporting System (CRS), (2017/02/28)

Note: Count of Reportable Fatal Collisions entered into the eCRS where Report Types is MVC only regardless of status, excluding FN detachments. Total Fatal Collisions includes collisions where causal factors are not listed in this table. Count of Speed-related collisions where contributing factor speed or speed too fast for conditions OR driver action exceeding speed limit or speed too fast for conditions. Count of Alcohol-related collisions where Alcohol-Involved indicated as Yes in eCRS. Count of collisions where victim type is deceased and safety equipment use is equipment not used but available or no equipment available. Count of collisions where distracted drivers is based on contributing factor of inattentive driver or driver condition reported as inattentive. Count of collisions where wildlife a factor is contributing factor reported as animal - wild or domestic.

The % change is based on last year over previous year.

\* Seatbelt includes: Use unknown, lap and shoulder belt, lap belt only, lap belt only of combined assembly, child safety seat used incorrectly, child safety seat used correctly, other passive restraint device.

### Table 3.3 Fatalities in Detachment Area

Source: Ontario Provincial Police, Collision Reporting System (CRS), (2017/02/28)

Note: Count of Fatal incidents and persons killed entered into the eCRS where Collision Type is reported as Fatal by report type (MVC, Marine, MSV, ORV). Alcohol-related is a count of the incidents where Alcohol-Involved on the Details Screen reported as Yes. First Nation Detachments were excluded from this count. Motorized Snow Vehicles Statistics are reported seasonally from October 1st to March 31st each reporting period. The % change is based on last year over previous year.

### Table 4.1 911 Pocket Dials

Source: Computer Aided Dispatch (CAD) System, (2017/02/26)

Note: CAD data and will not mirror any other data sources on how 911 calls/911 hang ups are reported. 911 Officer Confirmed Pocket Dial data represents CAD occurrences entered by PCC Communicators for calls received with no-voice contact from cellular devices only.

Where an officer confirms that a 911 Wireless call was indeed a 911 Pocket Dial the event types be changed and may not mirror other data sources (e.g. Niche) that reference 911 calls. This represents only a small percentage of all 911 calls handled and dispatched by the OPP.

**Table 4.2 2016 Mental Health Strategy Data**

Source: Records Management System (RMS Niche), (2017/02/08)  
Note: Occurrences between 2016/01/01 00:00 and 2016/12/31 23:59  
\* Occurrences with MH UCR Code 8529

---

<sup>i</sup> Source: Statistics Canada 2016 Census population profiles extracted May 2017



# OPP PROGRAMS AND SERVICES



**2017-2019**  
**ACTION PLAN**  
AND 2016 PROGRESS REPORT

Proactive and Reactive Policing/Investigation

Aboriginal Policing

Alcohol and Gaming Enforcement

Asset Forfeiture

Auxiliary Policing/Chaplaincy

Aviation/Flight Operations

Breath Analysis/Drug Recognition

Canine

Chemical, Biological, Radiological, Nuclear and Explosive Response

Child Exploitation Investigation

Civil and Human Rights Claim investigation

Collision Reconstruction and Investigation

Commercial Vehicles and Dangerous Goods

Communications

Community Policing

Complaint Investigation

Contraband Tobacco Enforcement

Court Case Management

Crime Analysis

Crime Prevention and Community Safety

Crime Stoppers

Criminal Investigation Services and Major Case Management

Crisis Negotiations

Drug Enforcement

Drug Evaluation and Classification

Emergency Management

Emergency Response

Explosives Disposal

Forensic and Identification Services

Hate Crimes/Extremism Investigation

Illegal Gaming Investigation

Incident Command

Intelligence

Marine/Motorized-Snow and Off-Road Vehicle and Motorcycle Patrol

Media Relations

Offender Transportation

Ontario Sex Offender Registry

Organized Crime Investigation

Polygraph

Protective Services

Provincial Anti-Terrorism

Provincial Operations Centre

Public Order

Repeat Offender Parole Enforcement

RIDE (Reduce Impaired Driving Everywhere)

Search and Rescue

Surveillance - Electronic and Physical

Tactical Emergency Medical

Tactics and Rescue

Technological Crime/Digital Evidence Forensics and Analysis

Threat Assessment and Criminal Behavioural Analysis

Traffic Safety

Training

Underwater Search and Recovery

United Nations Policing Missions

Unmanned Aerial Systems

Urban Search and Rescue

Violent Crime Linkage Analysis

Victim Assistance

Victim Identification and Rescue

Weapons Enforcement

Witness Protection

The above list corresponds with the Adequacy and Effectiveness of Police Services Regulation (Adequacy Standards, O. Reg. 3/99). The list further provides an overview of various OPP programs and services but should not be considered complete.



Southern Georgian Bay  
**DETACHMENT**

16864 Highway 12, PO Box 250  
Midland, Ontario  
L4R 4K8

Tel: (705) 526-3761  
Fax: (705) 526-6700  
[www.opp.ca](http://www.opp.ca)



**2017-2019**  
**ACTION PLAN**  
AND 2016 PROGRESS REPORT