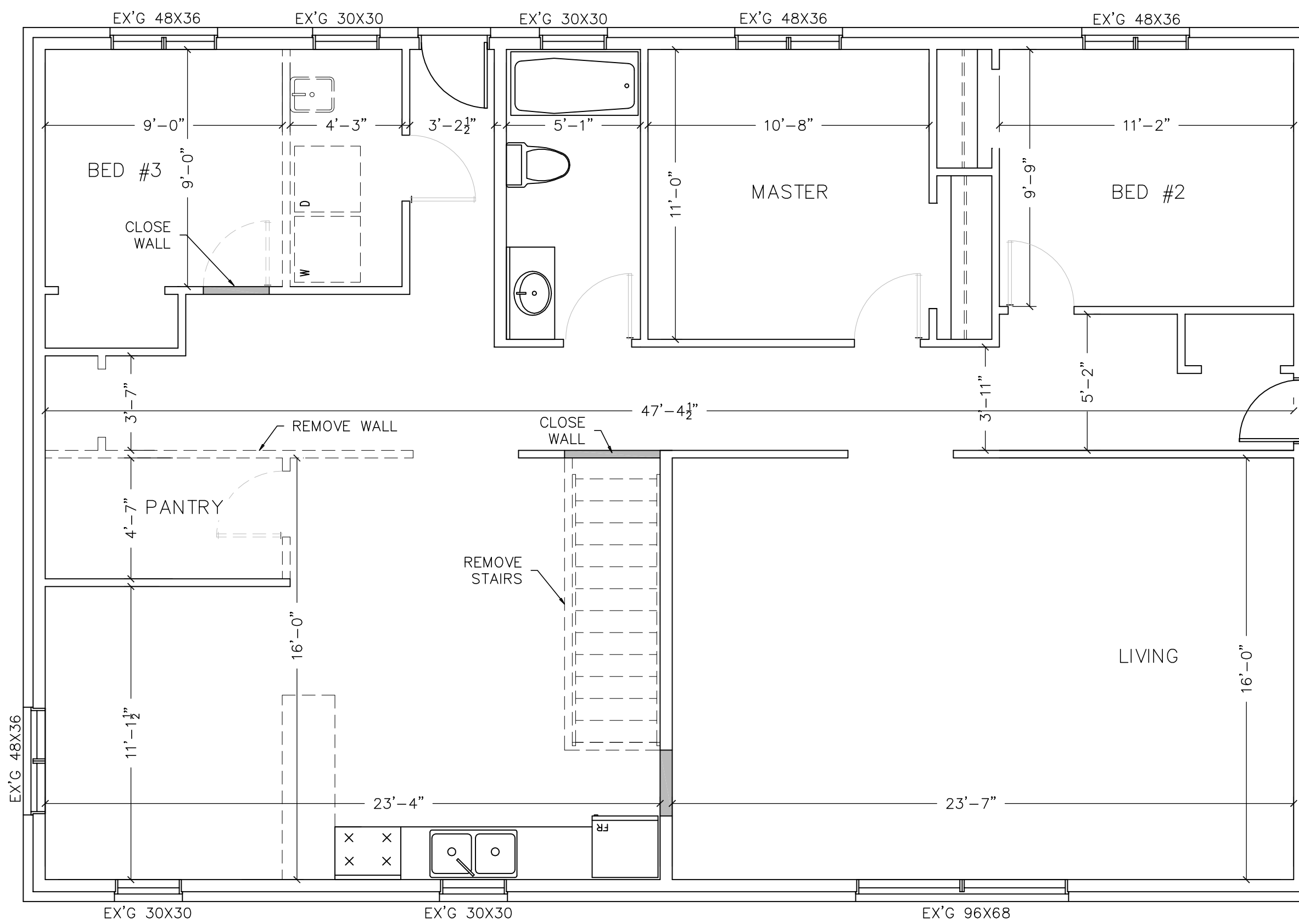
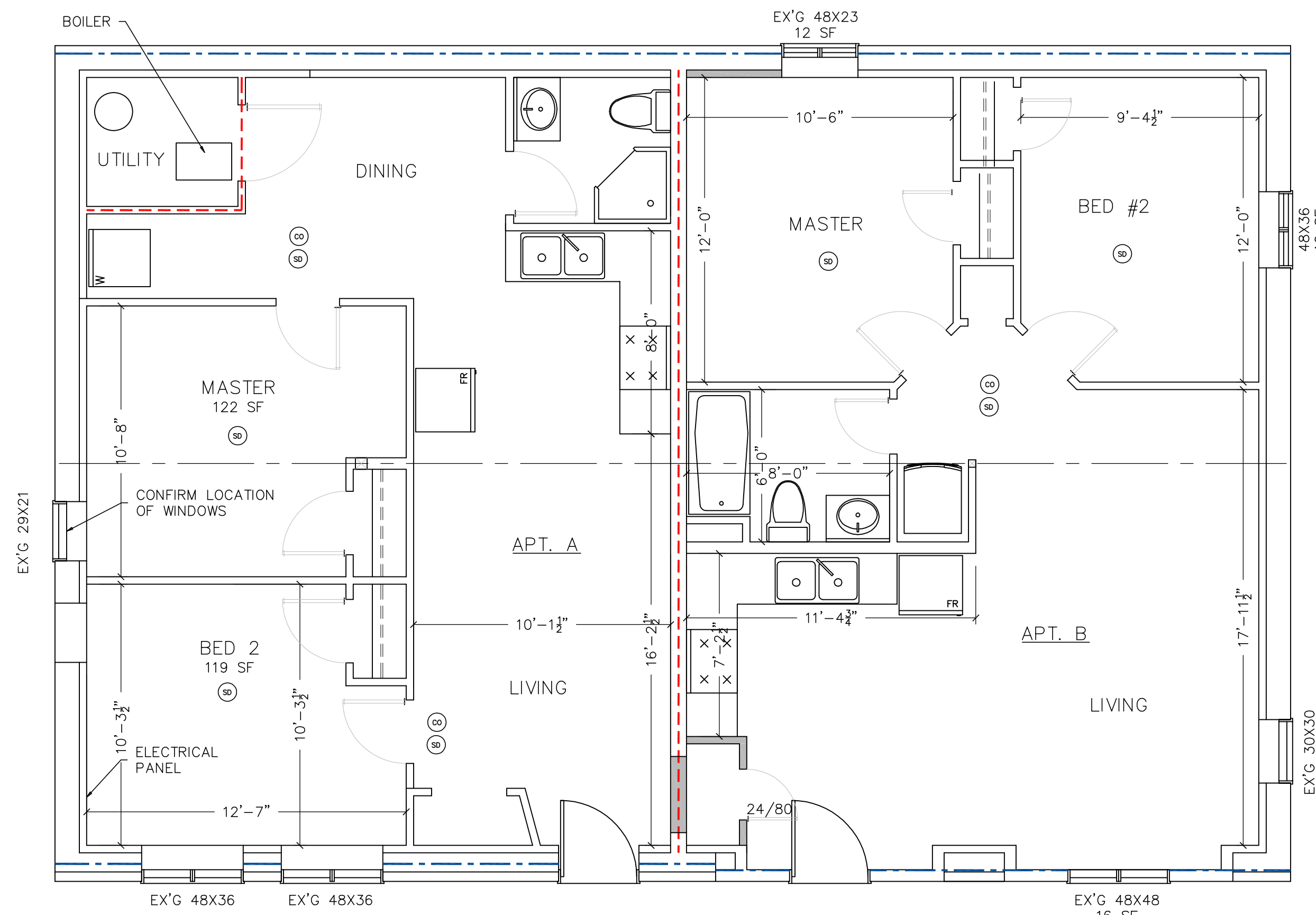


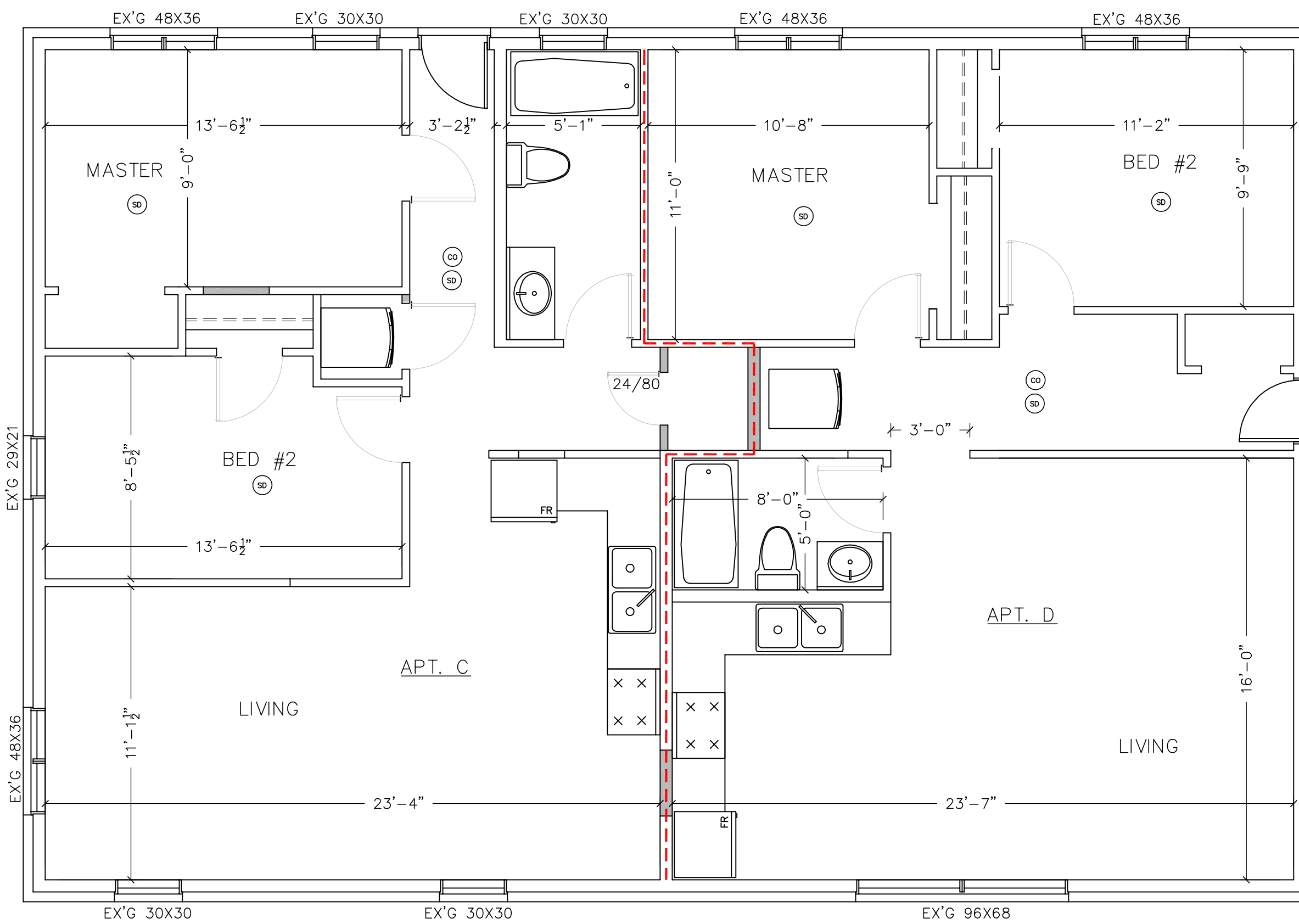
EX'G BASEMENT PLAN



EX'G MAIN FLOOR PLAN



PROPOSED BASEMENT PLAN



PROPOSED MAIN FLOOR PLAN

--- THIS LINETYPE DENOTES A FIRE SEPARATION REQUIRING A 3/4 HR F.R.R. (OPENINGS TO HAVE 20 MIN RATING & CLOSER)

----- THIS LINETYPE DENOTES A LOAD BEARING ELEMENT THAT REQUIRES A 3/4 HR F.R.R. OR BE OF NON COMBUSTIBLE CONSTRUCTION

SENTENCE 9.10.9.14.(1) REQUIRES 45 MIN F.R.R. BETWEEN APARTMENTS. WHERE EXISTING CONDITIONS EXIST COMPLIANCE ALTERNATIVE C152 ALLOWS AN EXISTING 30 MIN F.R.R.

SENTENCE 9.10.19.5 REQUIRES INTERCONNECTED SMOKE ALARMS, SENTENCE 9.10.19.4 REQUIRES THE SMOKE ALARMS TO BE CONNECTED TO AN ELECTRIC POWER SUPPLY. COMPLIANCE ALTERNATIVE C175 ALLOWS SMOKE ALARMS TO BE BATTERY OPERATED. A WIRELESS BATTERY POWERED ALARM MEETS THIS REQUIREMENTS. INTERCONNECTION IS ONLY REQUIRED WITHIN THE DWELLING UNIT, NOT BETWEEN UNITS.

NO.	DATE	REVISION

**Dupuis & Ouellet Inc.**  
 ARCHITECTURAL DESIGN SERVICES  
 1 COUNTY ROAD 6 SOUTH, TINY 10L 2J0  
 (705) 245-8808 www.dodesign.ca

**SHEET TITLE**  
**FLOOR PLANS**

**PROJECT NAME**  
**APARTMENT RENO FOR ANDREW BRENNAN**  
**219 QUEEN STREET, MIDLAND**

<b>SCALE</b> 1/4"=1'-0"	<b>DRAWN BY</b> S.O.
<b>DATE</b> NOV 24/18	<b>CHECKED</b> S.O.
<b>PROJECT</b> 18-446	<b>DRAWING</b> A11

DIMENSIONS ARE APPROXIMATE AND MUST BE CONFIRMED BY CONTRACTOR.