

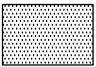
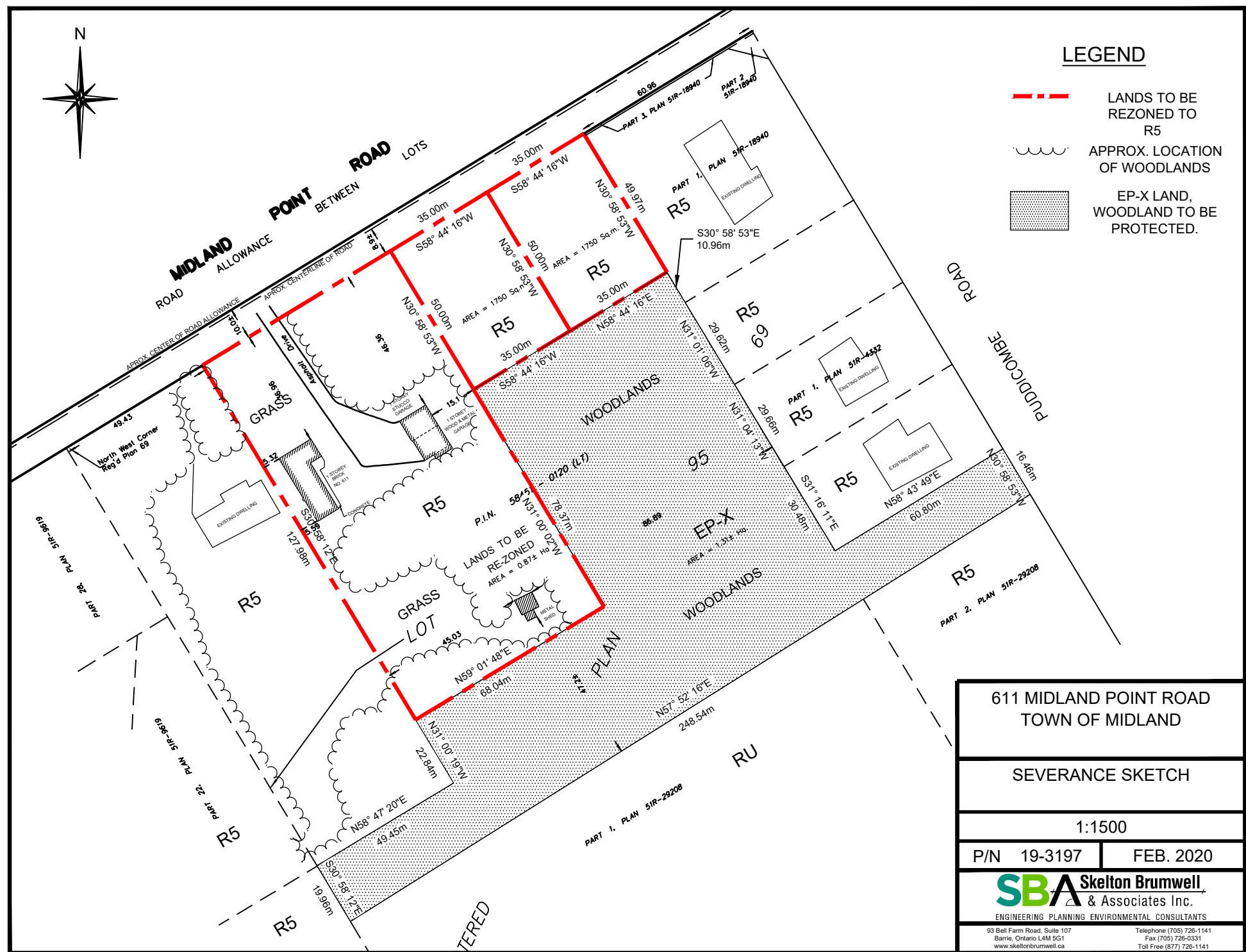



Copyright © 2019 Skelton Brumwell & Associates Inc. All rights reserved.
 This document is protected by copyright laws and may not be reproduced in any
 manner, or for any purpose, except with the written permission of the copyright holder.



LEGEND

-  LANDS TO BE REZONED TO R5
-  APPROX. LOCATION OF WOODLANDS
-  EP-X LAND, WOODLAND TO BE PROTECTED.



611 MIDLAND POINT ROAD TOWN OF MIDLAND	
SEVERANCE SKETCH	
1:1500	
P/N 19-3197	FEB. 2020
	
93 Bell Farm Road, Suite 107 Barrie, Ontario L4M 5G1 www.skeltonbrumwell.ca	
Telephone (705) 726-1141 Fax (705) 726-0331 Toll Free (877) 726-1141	