



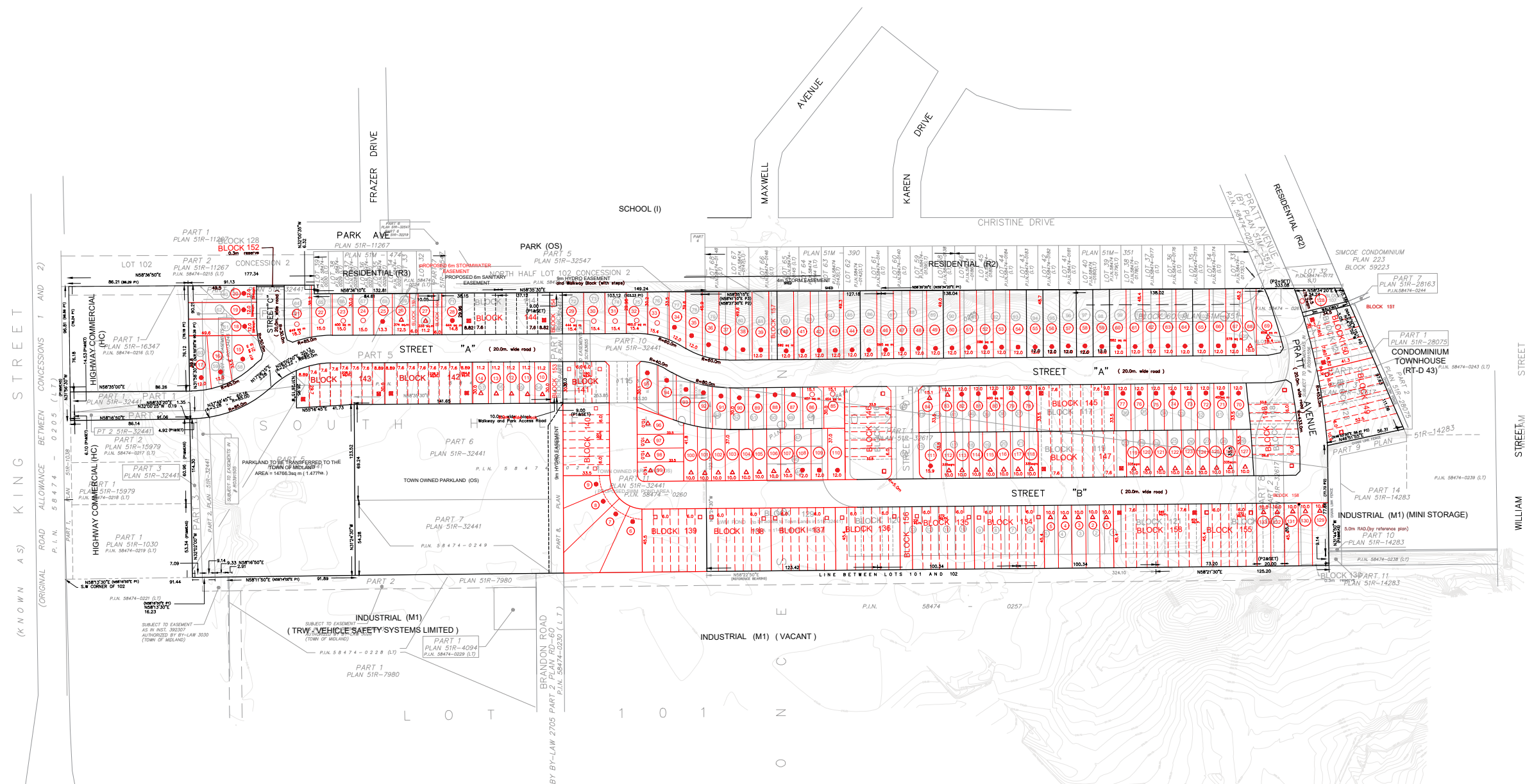
APPROVED DRAFT PLAN & REDLINE REVISION OVERLAY

Pratt - Draft Plan of Subdivision
823 King Street
Town of Midland
County of Simcoe

LEGEND

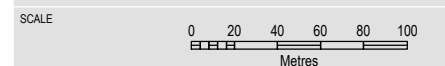
- Approved Draft Plan - April 20, 2009
- Revised Draft Plan - July 29, 2020

| LAND USE | LOTS/BLOCKS | UNITS | AREA |
|------------------------|---|------------|------|
| SINGLE DETACHED | | | |
| △ 10 M. LOTS | LOTS 1-5, 10-14, 26, 27, 68, 69, 83, 84, 96-107, 112-127, 129-133 | 49 | |
| ● 12 M. LOTS | LOTS 6-9, 15-20, 25, 28, 34-67, 70-82, 87-95, 108-110, 111 | 72 | |
| ○ 15 M. LOTS | LOTS 21-24, 29-33, 85, 86, 128 | 12 | |
| □ TOWNHOUSES 6.0m | BLOCKS 134-141, 146, 148, 149, 155 | 85 | |
| ▣ TOWNHOUSES 7.6m | BLKS 142-145, 147, 150, 158 | 52 | |
| ROADS | PRATT AVE, STREETS A, B, C, D | | |
| 6m SERVICING BLK | BLOCK 157, 159, 160 | | |
| 9m SERVICING BLK | BLOCK 153, 154, 156 | | |
| 3m WALKWAY | BLOCK 151 | | |
| 0.3M RESERVES | BLOCK 152 | | |
| TOTAL | | 268 | |



DATE August 6, 2020

SOURCES Approved Draft Plan - CDN Land Surveyors - April 20, 2009
Revised Draft Plan - Rudy Mak Surveying - July 29, 2020



N:\Briani\12162FD\Drawings\Draft Plan - Redline\CAD