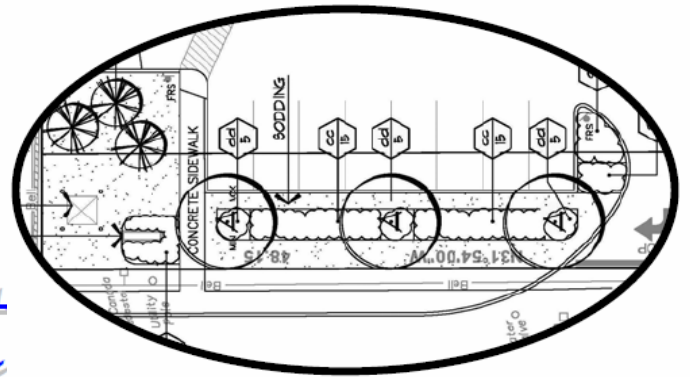




# *Approved Landscape Species List*



## Town of Midland Approved Tree Species

Scientific Name	Common Name	Type
<i>Acer nigrum</i>	Black Maple	Deciduous
<i>Acer rubrum</i>	Red Maple	Deciduous
<i>Acer saccharinum</i>	Silver Maple	Deciduous
<i>Acer saccharum</i> ssp. <i>saccharum</i>	Sugar Maple; Hard Maple	Deciduous
<i>Alnus rugosa</i>	Speckled Alder	Deciduous
<i>Betula alleghaniensis</i> (B. <i>lutea</i> )	Yellow Birch	Deciduous
<i>Betula papyrifera</i>	Paper Birch	Deciduous
<i>Carpinus caroliniana</i>	Hornbeam; Blue-Beech	Deciduous
<i>Carya cordiformis</i>	Bitternut Hickory	Deciduous
<i>Carya ovata</i>	Shagbark Hickory	Deciduous
<i>Castanea dentata</i>	American Chestnut	Deciduous
<i>Celastrus scandens</i>	American Bittersweet	Deciduous
<i>Celtis occidentalis</i>	Hackberry	Deciduous
<i>Cercos canadensis</i>	Redbud	Deciduous
<i>Cornus alternifolia</i>	Alternative-Leaved Dogwood	Deciduous
<i>Cornus florida</i>	Flowering Dogwood	Deciduous
<i>Fagus grandifolia</i>	American Beech	Deciduous
<i>Fraxinus americana</i>	*White Ash	Deciduous
<i>Fraxinus nigra</i>	*Black Ash	Deciduous
<i>Fraxinus pennsylvanica</i>	*Red Ash	Conifer
<i>Juglans cinerea</i>	Butternut	Deciduous
<i>Juglans nigra</i>	Black Walnut	Deciduous
<i>Juniperus virginiana</i>	Red-Ceder	Deciduous
<i>Magnolia acuminata</i>	Cucumber Magnolia	Deciduous
<i>Malus domestica</i>	Apple	Deciduous
<i>Morus rubra</i>	Red Mulberry	Deciduous
<i>Ostrya virginiana</i>	Ironwood; Hop Hornbeam	Deciduous
<i>Pinus resinosa</i>	Red Pine	Conifer
<i>Pinus strobus</i>	White Pine	Conifer
<i>Platanus occidentalis</i>	Sycamore	Deciduous
<i>Populus balsamifera</i>	Balsam Poplar	Conifer
<i>Populus tremuloides</i>	Quaking or Trembling Aspen	Conifer
<i>Prunus americana</i>	American Wild Plum	Deciduous
<i>Prunus nigra</i>	Canada Plum	Deciduous
<i>Prunus pensylvanica</i>	Fire or Pine Cherry	Deciduous
<i>Prunus serotina</i>	Wild Black Cherry	Deciduous
<i>Quercus alba</i>	White Oak	Deciduous
<i>Quercus macrocarpa</i>	Bur Oak	Deciduous
<i>Quercus meuhlenbergii</i>	Chinquapin Oak	Deciduous
<i>Quercus rubra</i>	Red Oak	Deciduous
<i>Quercus shumardii</i>	Shumard Oak	Deciduous
<i>Quercus velutina</i>	Black Oak	Deciduous
<i>Rhus typhina</i>	Staghorn Sumac	Deciduous

## Town of Midland Approved Tree Species

Scientific Name	Common Name	Type
<i>Salix amygdaloides</i>	Peach-Leaved Willow	Deciduous
<i>Salix bebbiana</i>	Bebb's Willow	Deciduous
<i>Salix lucida</i>	Shining Willow	Deciduous
<i>Salix nigra</i>	Black Willow	Deciduous
<i>Salix pentandra</i>	Laurel Willow	Deciduous
<i>Sorbus americana</i>	American Mountain-Ash	Deciduous
<i>Sorbus decora</i>	Showy Mountain-Ash	Deciduous
<i>Thuja occidentalis</i>	Eastern White Cedar	Conifer
<i>Tilia americana</i>	Linden; Basswood	Deciduous
<i>Tsuga canadensis</i>	Hemlock	Conifer

\* Note: These ash trees are susceptible to the Emerald Ash Borer Beetle and should be used as a part of a planting program that includes a range of other tree species.

## Town of Midland Approved Shrub Species

Scientific Name	Common Name
<i>Alnus incana</i> ssp. <i>rugosa</i>	Speckled Alder
<i>Alnus viridis</i> ssp. <i>Crispa</i>	Green Alder
<i>Amelanchier alnifolia</i>	Saskatoon Juneberry; Western Serviceberry
<i>Amelanchier arborea</i>	Downy Serviceberry
<i>Amelanchier canadensis</i>	Shadblow Serviceberry
<i>Aronia arbutifolia</i>	Red Chokecherry
<i>Aronia melanocarpa</i>	Black Chokeberry
<i>Ceanothus americanus</i>	New Jersey Tea
<i>Cephalanthus occidentalis</i>	Buttonbush
<i>Cornus alternifolia</i>	Alternate-lead Dogwood; Pagoda Dogwood
<i>Cornus amomum</i>	Silky Dogwood
<i>Cornus racemosa</i>	Gray Dogwood
<i>Cornus sericea</i>	Red Osier Dogwood
<i>Crataegus douglasii</i>	Black Hawthorn
<i>Elaeagnus commutata</i>	Silverberry; Wolf Willow
<i>Gaylussacia baccata</i>	Huckleberry
<i>Hamamelis virginiana</i>	Common Witch Hazel
<i>Ilex verticillata</i>	Winterberry
<i>Juniperus communis</i>	Common or Ground Juniper
<i>Ledum groenlandicum</i>	Labrador Tea
<i>Lonicera involucrata</i>	Alpine Honeysuckle; Black Twinberry
<i>Physocarpus opulifolius</i>	Common Ninebark
<i>Potentilla fruticosa</i>	Shrubby Cinquefoil
<i>Prunus americana</i>	American Plum; Wild Plum
<i>Prunus nigra</i>	Canada Plum
<i>Prunus pumilla</i>	Sand Cherry
<i>Prunus virginiana</i>	Chokecherry
<i>Rhus aromatica</i>	Fragrant Sumac
<i>Rhus typhina</i>	Staghorn Sumac
<i>Rosa acicularis</i>	Prickly Rose
<i>Rosa blanda</i>	Wild Rose
<i>Rubus allegheniensis</i>	Common Blackberry
<i>Rubus idaeus</i>	Red Raspberry
<i>Rubus occidentalis</i>	Black Raspberry
<i>Rubus odoratus</i>	Flowering Raspberry; Fragrant Thimbleberry
<i>Rubus parviflorus</i>	Thimbleberry
<i>Salix discolor</i>	Large Pussy Willow
<i>Salix eriocephala</i>	Heart-Leaved Willow
<i>Salix exigua</i>	Sandbar Willow
<i>Sambucus canadensis</i>	Elderberry; Common Elder
<i>Sambucus racemosa</i> ( <i>S. pubens</i> )	Red-Berried Elder
<i>Spiraea alba</i>	Meadowsweet
<i>Staphylea trifolia</i>	Bladdernut

## Town of Midland Approved Shrub Species

<b>Scientific Name</b>	<b>Common Name</b>
<i>Symphoricarpos albus</i>	Snowberry
<i>Symphoricarpos occidentalis</i>	Western Snowberry; Wolfberry
<i>Taxus canadensis</i>	Canadian Yew; Ground Hemlock
<i>Vaccinium corymbosum</i>	Highbush Blueberry
<i>Vaccinium myrtilloides</i>	Canada Blueberry; Velvetleaf Blueberry
<i>Viburnum cassinoides</i>	Witherod
<i>Viburnum edule</i>	Squashberry
<i>Viburnum lentago</i>	Nannyberry; Sheepberry

## Town of Midland Approved Grass, Vine and Flower Species

<b>Scientific Name</b>	<b>Common Name</b>	<b>Type</b>
Aristolochia macrophylla	Dutchman's Pipe	Vine
Arundo donax	Giant Reed Grass	Grass
Calamagrosis x acutiflora 'Karl Forrester'	Feather Reed Grass	Grass
Campsis radicans	Trumpet Vine	Vine
Chasmanthium latifolium	Northern Sea Oats	Grass
Clematis virginiana	Virgin's Bower	Vine
Miscanthus sinensis 'Gracillimus'	Maiden Grass	Grass
Miscanthus sinensis 'Varigatus'	Striped Grass	Grass
Miscanthus sinensis 'Zebrinus'	Zebra Grass	Grass
Panicum virgatum 'Northwind'	Northwind Swith Grass	Grass
Panicum virgatum 'Rubrum'	Red Swith Grass	Grass

Any flowers species used must be types that are native to Ontario.

## Species Not on the List

The Planning and Development has compiled this list specifically to encourage the planting of landscape species indigenous to Ontario, and to discourage the use of non-native species. If a developer wishes to use landscape species that are not on the Approved List, a request must be made to the Planning and Development Department for approval. The formal request must be made with the use of a Landscape Architect or equivalent. The request should include a description of the proposed species, and why it is being proposed. The request must prove the proposed species is not invasive and is native to Ontario. The Department will review the request to determine if the guidelines have been met and if the species is acceptable to use.