



WINDOW SCHEDULE NOTES:

F FIXED WINDOW
S TEMPERED SAFETY GLASS
O OPENING WINDOW TO WITHSTAND A LATERAL LOAD OF 0.75 KN/M OR A CONCENTRATED LOAD OF 1.0 KN APPLIED AT ANY POINT, WHICHEVER PRODUCES THE GREATEST EFFECT, AS PER O.B.C. 4.1.5.15. (SHOP DRAWINGS BEARING PROFESSIONAL ENGINEER'S STAMP TO BE PROVIDED)

O OPENING WINDOW TO WITHSTAND LOADS AS PER O.B.C. 4.1.5.15. (SHOP DRAWINGS BEARING PROFESSIONAL ENGINEER'S STAMP TO BE PROVIDED)



Key Plan			
Issue	Date	Description	By
01	JUN 16/23	OWNER REVIEW & CONSULTATION	J.M.
02	SEP 12/23	REVIEW AND COORDINATION	J.M.
03	FEB 04/25	SITE PLAN APPLICATION	J.M.

Rev.	Date	Description	By
01	N/A	N/A	J.M.

ARCHITECT'S INSTRUCTIONS:

THE CONTRACTOR MUST CHECK AND VERIFY ALL DRAWING DIMENSIONS ON THE SITE BEFORE AND DURING CONSTRUCTION, AND REPORT TO THE ARCHITECT ANY DISCREPANCIES PRIOR TO COMMENCING WORK.

DRAWINGS ARE NOT TO BE SCALED FOR PURPOSES OF CONSTRUCTION.

ALL CONSTRUCTION DOCUMENTS ISSUED BY THE ARCHITECT ARE THE COPYRIGHT OF THE ARCHITECT AND MUST BE RETURNED UPON REQUEST.

REPRODUCTION OF THE CONSTRUCTION DOCUMENTS IN PART OR IN WHOLE IS FORBIDDEN WITHOUT THE ARCHITECT'S WRITTEN PERMISSION.

keith loffler mc Alpine architects
80 BLOOR STREET WEST, SUITE 401, TORONTO, ONTARIO, M5S 2V1 T (416) 944 1902 info@kma.com



SITE PLAN APPLICATION			
Issued for		Scale	
FEBRUARY 04, 2025		1/4" = 1'-0"	
2134	J.M.	J.M.	J.M.
Project no.	Drawn by	Checked by	

Interior Alterations

234 King Street, Midland, Ontario
OWNER: Petro Gold Ltd.

South Elevation



WINDOW SCHEDULE NOTES:

F FIXED WINDOW
S TEMPERED SAFETY GLASS
① FIXED WINDOW TO WITHSTAND A LATERAL LOAD OF 0.75 KN/M OR A CONCENTRATED LOAD OF 1.0 KN APPLIED AT ANY POINT, WHICHEVER PRODUCES THE GREATEST EFFECT, AS PER O.B.C. 4.1.5.15. (SHOP DRAWINGS BEARING PROF. ENGINEER'S STAMP TO BE PROVIDED)
② OPENING WINDOW TO WITHSTAND LOADS AS PER ① WINDOWS WITH A CONTROLLED SASH OPERATOR TO RESTRICT THE OPENING OF THE WINDOW TO MAXIMUM 100 MM. (SHOP DRAWING 6S BEARING PROF. ENGINEER'S STAMP TO BE PROVIDED)



Key Plan			
Issue	Date	Description	By
01	JUN 16/23	OWNER REVIEW & CONSULTATION	J.M.
02	SEP 12/23	REVIEW AND COORDINATION	J.M.
03	FEB 04/25	SITE PLAN APPLICATION	J.M.

01	N/A	N/A	J.M.
Rev.	Date	Description	By

ARCHITECT'S INSTRUCTIONS:

THE CONTRACTOR MUST CHECK AND VERIFY ALL DRAWING DIMENSIONS ON THE SITE BEFORE AND DURING CONSTRUCTION, AND REPORT TO THE ARCHITECT ANY DISCREPANCIES PRIOR TO COMMENCING WORK.

DRAWINGS ARE NOT TO BE SCALED FOR PURPOSES OF CONSTRUCTION.

ALL CONSTRUCTION DOCUMENTS ISSUED BY THE ARCHITECT ARE THE COPYRIGHT OF THE ARCHITECT AND MUST BE RETURNED UPON REQUEST.

REPRODUCTION OF THE CONSTRUCTION DOCUMENTS IN PART OR IN WHOLE IS FORBIDDEN WITHOUT THE ARCHITECT'S WRITTEN PERMISSION.

keith loffler mc Alpine architects
80 BLOOR STREET WEST, SUITE 401, TORONTO, ONTARIO, M5S 2Y1 T 416 594 1902 info@kmaarch.com



SITE PLAN APPLICATION			
Issued for		1/4" = 1'-0"	
FEBRUARY 04, 2025		Scale	
2134	J.M.	J.M.	J.M.
Project no.	Drawn by	Checked by	

Interior Alterations

234 King Street, Midland, Ontario
OWNER: Petro Gold Ltd.
Project

East Elevation

[illegible]

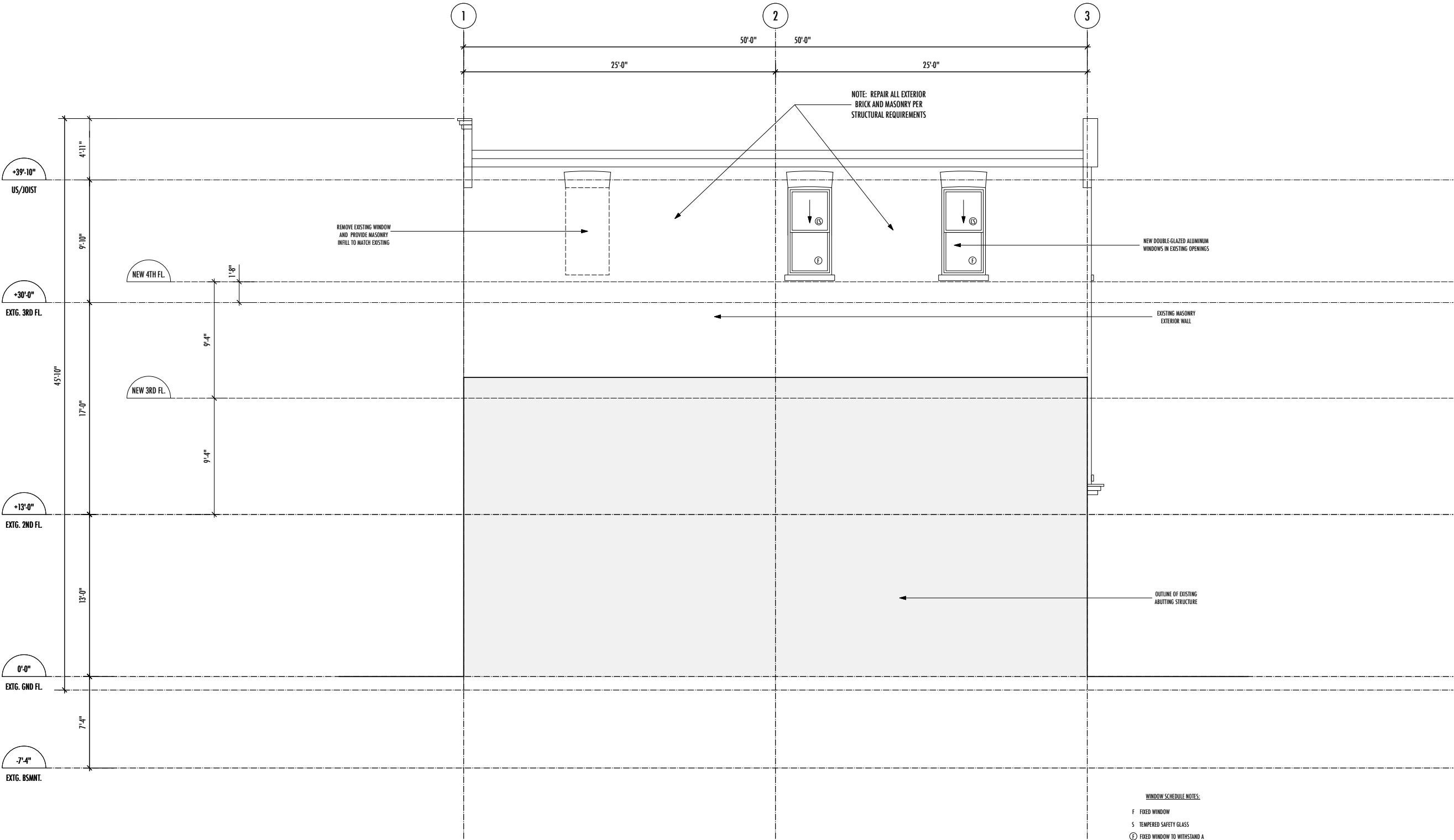
keith loffler mc Alpine architects
80 BLOOR STREET WEST, SUITE 403, TORONTO, ONTARIO, M5S 2V1 T (416) 964 1102 info@k1march.com



SITE PLAN APPLICATION		
Issued for		
FEBRUARY 04, 2025	1/4" = 1'-0"	
Issue date	Scale	
2134	J.M.	J.M.

234 King Street, Midland, Ontario
OWNER: Petro Gold Ltd.
Project

Drawing Title	
A303	
Sheet no.	



WINDOW SCHEDULE NOTES:

F FIXED WINDOW

S TEMPERED SAFETY GLASS

① FIXED WINDOW TO WITHSTAND A LATERAL LOAD OF 0.75 KN/M OR A CONCENTRATED LOAD OF 1.0 KN APPLIED AT ANY POINT, WHICHEVER PRODUCES THE GREATEST EFFECT, AS PER O.B.C. 4.1.5.15. (SHOP DRAWINGS BEARING PROF. ENGINEER'S STAMP TO BE PROVIDED)

② OPENING WINDOW TO WITHSTAND LOADS AS PER ① WINDOWS WITH A CONTROLLED SASH OPERATOR TO RESTRICT THE OPENING OF THE WINDOW TO MAXIMUM 100 MM. (SHOP DRAWINGS BEARING PROF. ENGINEER'S STAMP TO BE PROVIDED)



Key Plan

Issue	Date	Description	By
01	FEB 04/25	SITE PLAN APPLICATION	J.M.

01	N/A	N/A	J.M.
Rev.	Date	Description	By

ARCHITECT'S INSTRUCTIONS:

THE CONTRACTOR MUST CHECK AND VERIFY ALL DRAWING DIMENSIONS ON THE SITE BEFORE AND DURING CONSTRUCTION, AND REPORT TO THE ARCHITECT ANY DISCREPANCIES PRIOR TO COMMENCING WORK.

DRAWINGS ARE NOT TO BE SCALED FOR PURPOSES OF CONSTRUCTION.

ALL CONSTRUCTION DOCUMENTS ISSUED BY THE ARCHITECT ARE THE COPYRIGHT OF THE ARCHITECT AND MUST BE RETURNED UPON REQUEST.

REPRODUCTION OF THE CONSTRUCTION DOCUMENTS IN PART OR IN WHOLE IS FORBIDDEN WITHOUT THE ARCHITECT'S WRITTEN PERMISSION.

keith loffler mc Alpine architects
80 BLOOR STREET WEST, SUITE 401, TORONTO, ONTARIO, M5S 2Y1 T 416 594 1902 info@kmaarch.com



SITE PLAN APPLICATION			
FEBRUARY 04, 2025		1/4" = 1'-0"	
Issue Date	Scale	Drawn by	Checked by
2134	J.M.	J.M.	J.M.
Project No.	Drawn by	Checked by	

Interior Alterations

234 King Street, Midland, Ontario
OWNER: Petro Gold Ltd.

East Elevation

Drawing Title	
A302	
Sheet No.	