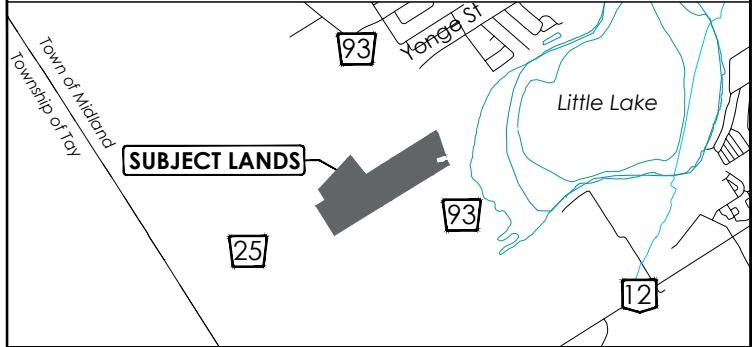




Key Map



659 Balm Beach Road East,
(Lot 105 Concession 1 West of Penetanguishene Road)
Town of Midland

LEGEND

- Subject Site (± 20.6 ha)
- Mixed-Use High Density:
 - 100 units / ha: ± 320 units
- Medium Density Residential
 - 50 units / ha: ± 575 units
- S.W.M. Area (1.7 ha)
- Potential Park Area (± 0.8 ha)
- Natural Heritage Area (± 3.3 ha)
- Potential Roads - 20.0m width

* TOTAL UNITS: ± 895 units

FOR DISCUSSION PURPOSES ONLY

Note: This drawing is for discussion purposes only.
The information shown is approximate and subject to change.



Date: October 1, 2021 Drawn By: A.S.
File: 17-728 Checked By: G.B.

IPS INNOVATIVE PLANNING SOLUTIONS
PLANNERS • PROJECT MANAGERS • LAND DEVELOPMENT
647 WELHAM ROAD, UNIT 9, BARRIE, ON, L4N 0B7 Tel: 705-812-3281
3800 STEELS AVE. W, SUITE 200W, VAUGHAN, ON, L4L 4G9 Tel: 905-291-7525
info@ipsconsultinginc.com / www.ipsconsultinginc.com

PROPOSED OFFICIAL PLAN AMENDMENT
659 BALM BEACH ROAD

SCHEDULE OF REVISIONS			
No.	Date	Description	By
11	May 14, 2025	Revise land-use designations and road network;	A.S.
12	May 23, 2025	Revise land-use designations and road network;	A.S.
13	June 12, 2025	Add new parcel to block 'G' and 'C';	A.S.
14	June 26, 2025	Revise land-use designations;	A.S.