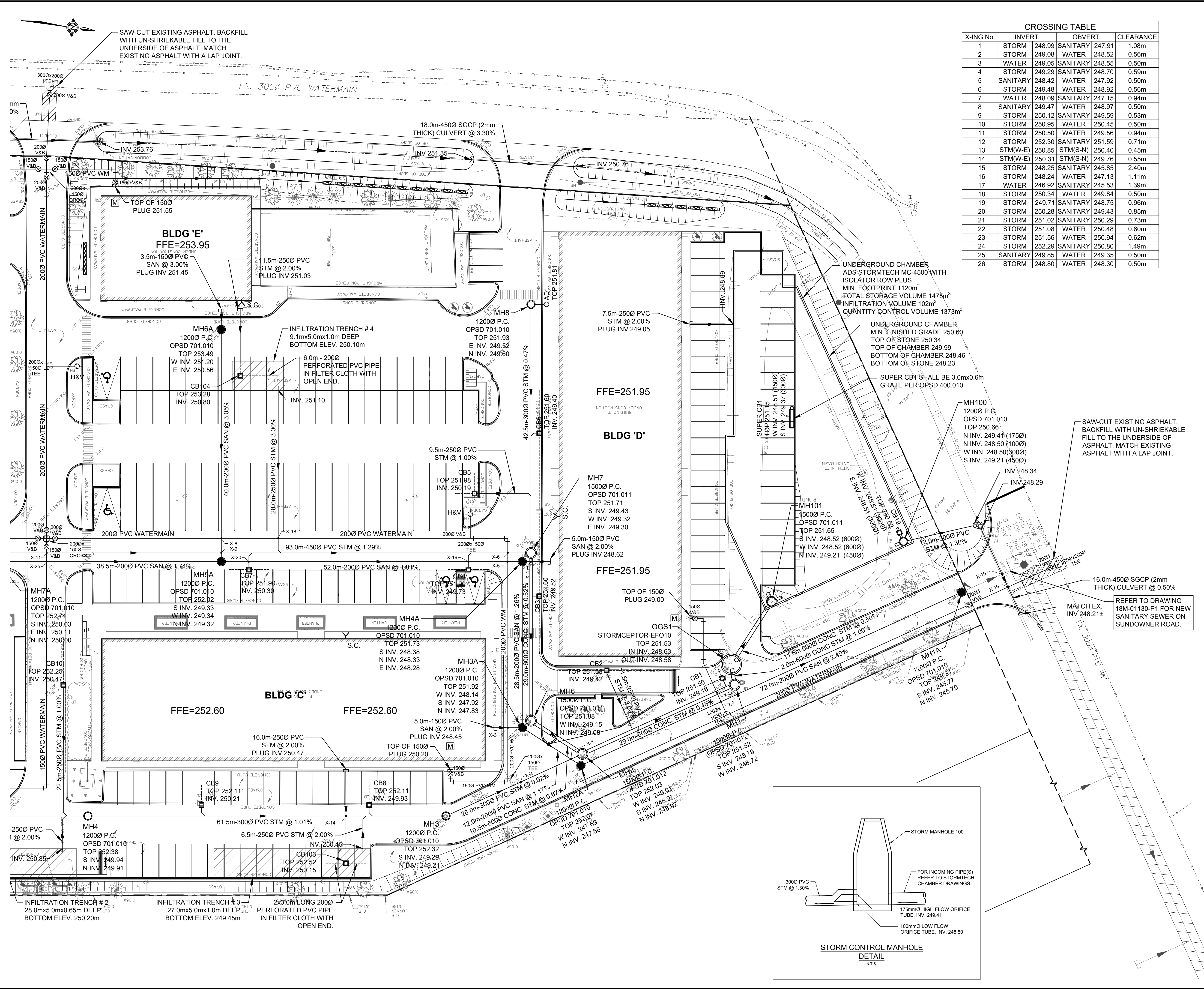
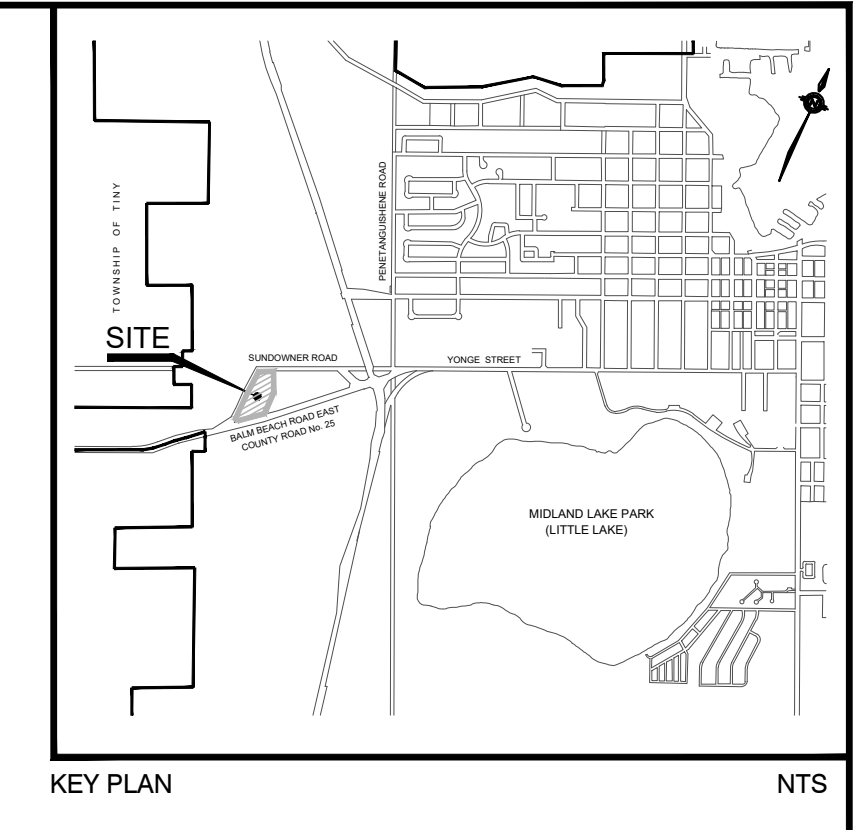


FILE NAME: X:\DIV\0130 - Midland\Phase 2\Wm\Engineering Drawings\18M-01130-SS2-SSG3-ESG2-D2.dwg, SS2-2 PRINTED ON: Friday, 09/29/2023



CROSSING TABLE

X-ING No.	INVERT	OBVERT	CLEARANCE
1	STORM 248.99	SANITARY 247.91	1.08m
2	STORM 249.08	WATER 248.52	0.56m
3	WATER 249.05	SANITARY 248.55	0.50m
4	STORM 249.29	SANITARY 248.70	0.59m
5	SANITARY 248.42	WATER 247.92	0.50m
6	STORM 249.48	WATER 248.92	0.56m
7	WATER 248.09	SANITARY 247.15	0.94m
8	SANITARY 249.47	WATER 248.97	0.50m
9	STORM 250.12	SANITARY 249.59	0.53m
10	STORM 250.95	WATER 250.45	0.50m
11	STORM 250.50	WATER 249.56	0.94m
12	STORM 252.30	SANITARY 251.59	0.71m
13	STM(W-E) 250.85	STM(S-N) 250.40	0.45m
14	STM(W-E) 250.31	STM(S-N) 249.76	0.55m
15	STORM 248.25	SANITARY 245.85	2.40m
16	STORM 248.24	WATER 247.13	1.11m
17	WATER 246.92	SANITARY 245.53	1.39m
18	STORM 250.34	WATER 249.84	0.50m
19	STORM 249.71	SANITARY 248.75	0.96m
20	STORM 250.28	SANITARY 249.43	0.85m
21	STORM 251.02	SANITARY 250.29	0.73m
22	STORM 251.08	WATER 250.48	0.60m
23	STORM 251.56	WATER 250.94	0.62m
24	STORM 252.29	SANITARY 250.80	1.49m
25	SANITARY 249.85	WATER 249.35	0.50m
26	STORM 248.80	WATER 248.30	0.50m



- LEGEND**
- SANITARY SEWER AND MANHOLE
 - STORM SEWER AND MANHOLE
 - 1500 SUBDRAIN IN FILTERCLOTH
 - CATCHBASIN
 - DCB DOUBLE CATCHBASIN
 - ⊗ V&B VALVE AND BOX
 - ⊕ H&V HYDRANT AND VALVE
 - ⊙ WATER METER
 - Y S.C. SIAMESE CONNECTION
 - LIMIT OF PROPERTY
 - SGGP STANDARD GALVANIZED CORRUGATED PIPE

SITE PLAN APPROVAL
 This drawing is approved under Section 41 of the Planning Act by Council of the Corporation of the Town of Midland by Resolution No. _____ passed the ____ day of _____, or by the Director of Planning and Building Services on the ____ of _____ pursuant to Bylaw 2013-13.
 Wesley R. Crown, MCIP, RPP

BENCHMARK
 ELEVATIONS SHOWN GEODETIC DRIVEN FROM TOWN OF MIDLAND BENCH MARK #VA14U71, ELEVATION 245.61M

No.	REVISIONS TO DRAWING	BY	DATE	APPR.

ALL PREVIOUS ISSUES OF THIS DRAWING ARE SUPERSEDED

CLIENT
 COLAND DEVELOPMENT CORPORATION

MUNICIPALITY
 Town of Midland

PROJECT TITLE
 710 BALM BEACH ROAD
 1277 AND 1337 SUNDOWNER ROAD

SHEET TITLE
 SITE SERVICING PLAN

CONSULTANT
 WSP
 100 Commerce Valley Dr. West, Thornhill, ON, Canada L3T 6A1
 T: 905-882-1100 F: 905-882-0200 www.wsp.com

APPROVALS

TOWN OF MIDLAND	STAMP
DIRECTOR OF ENGINEERING	

DATE _____

DESIGNED	P.Q.A.	DRAWN	P.Q.A.	CHECKED	Y.W.C.
SCALE	1:300	DATE	OCTOBER 2018	PROJECT NUMBER	DWG. NUMBER
				18M-01130	SS2-2

Town File No.