

DRAWINGS MUST NOT BE SCALED.

ALL DIMENSIONS AND INFORMATION SHOWN ON THESE DRAWINGS MUST BE CHECKED AND VERIFIED ON SITE PRIOR TO CONSTRUCTION AND FABRICATION OF ITS COMPONENTS. THE CONTRACTOR MUST REPORT ALL DISCREPANCIES AND ERRORS OR OMISSIONS TO THE ARCHITECT IN WRITING.

UNLESS SPECIFICALLY NOTED OTHERWISE ON THE DRAWINGS NO PROVISIONS HAVE BEEN MADE IN THE DESIGN FOR CONDITIONS OCCURRING DURING CONSTRUCTION. IT SHALL BE THE RESPONSIBILITY OF THE CONTRACTOR TO PROVIDE ALL NECESSARY BRACING, SHORINGS, SHEET PILING OR OTHER TEMPORARY SUPPORTS, TO SAFEGUARD ALL EXISTING OR ADJACENT STRUCTURES AFFECTED BY THIS WORK.

REPRODUCTION OF DRAWINGS AND RELATED DOCUMENTS IN WHOLE OR IN PART IS FORBIDDEN WITHOUT WRITTEN PERMISSION OF 3 SIXTY ARCHITECT INC.

ALL DRAWINGS AND RELATED DOCUMENTS ARE THE COPYRIGHT PROPERTY OF 3 SIXTY ARCHITECT INC. AND MUST BE RETURNED UPON REQUEST.

No.	DATE	REVISION
1	JAN 12/23	ISSUED TO TOWN FOR PRECONSULTATION MTG
2	APR. 24/23	ISSUED TO TOWN FOR SPA
3		

**ELEVATION MATERIAL LEGEND:**

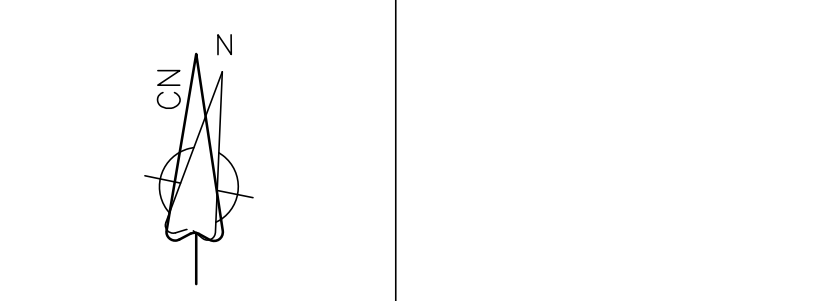
	EXTERIOR INSULATED FINISH SYSTEM
	MASONRY VENEER FINISH
	ACID WASHED PRECAST VENEER
	PREFIN ALUM SIDING

NOTE: ALL LIGHT FIXTURES INDICATED SHALL BE CENTERED ON PANEL OR FEATURE U/N OTHERWISE PROVIDE SMOOTH SURFACE AREA @ ALL FIXTURES LOCATIONS - SIZE TO BE COORD WITH ALL TRADES

NOTE: EIFS DIVISION TO SUBMIT LAYOUT DRAWINGS INDICATING ALL REVEAL LOCATIONS PRIOR TO INSTALLATION FOR REVIEW AND APPROVAL

NOTE: ALL EIFS CONTROL JOINTS TO BE COORDINATED WITH ARCHITECT BEFORE WORK COMMENCES - CONTRACTOR TO PROVIDE LAYOUT DRAWING FOR REVIEW

**3sixty architect inc.**  
 175 Stone Cross  
 Richmond Hill, Ontario L4C 0S8  
 Tel: 416-284-1073  
 Fax: 416-284-1908  
 E-Mail: 3sixty@3sixtyarchitect.ca  
 Web: www.3sixtyarchitect.ca



OWNER/APPLICANT  
**1626725 ONTARIO LIMITED**  
 5110 DUNDAS ST. WEST  
 TORONTO, ONTARIO, M9A 1C2  
 T: 416 605 1149 EMAIL: jim@sturino.ca

PROPOSED  
**BUILDING 'C'**  
 FOR  
**FUTURE TENANT**

Proposed Shell Building  
 Phase 3 Development  
 9281 COUNTY RD. 93  
 Town of Midland County of Simcoe

EXTERIOR ELEVATIONS  
 REAR(EAST) & SIDE(NORTH)  
 COMM. NO. 0272

SCALE AS NOTED DATE NOV. 4, 2021 DRAWING NO. SPA 3.1  
 DRAWN FM CHECKED FM

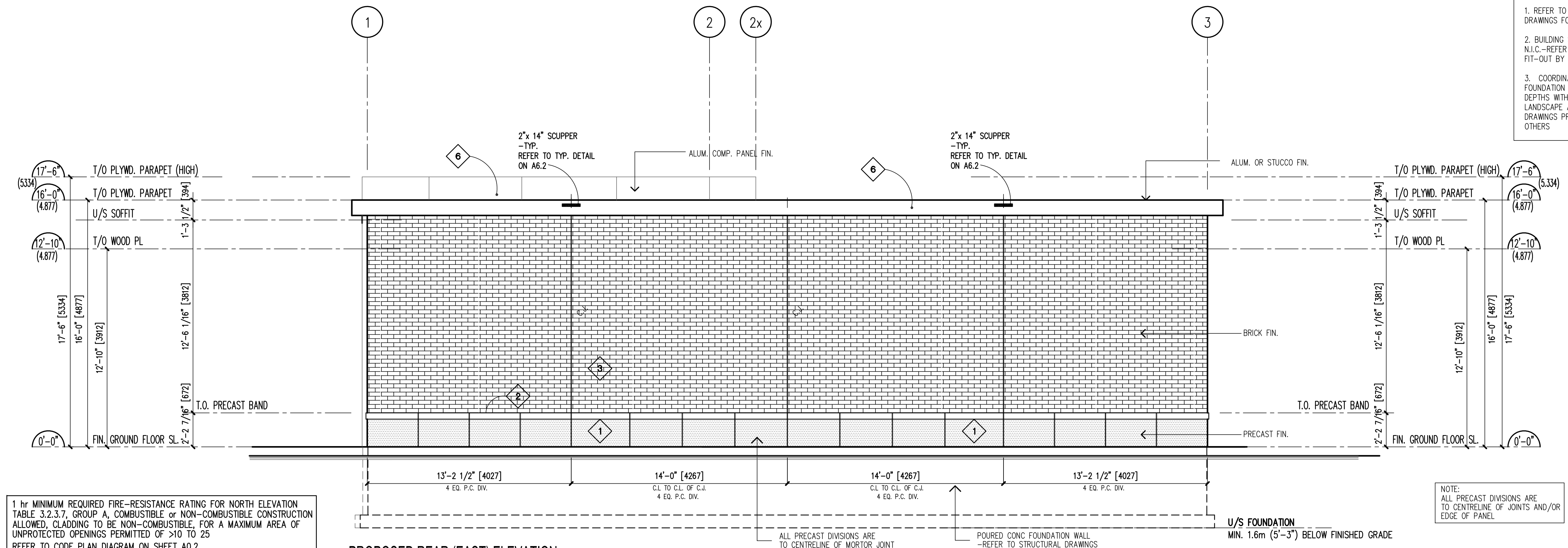
NOTE:  
 1. REFER TO ELECTRICAL DRAWINGS FOR LIGHT FIXTURES.  
 2. BUILDING SIGNAGE N.I.C.-REFER TO INTERIOR FIT-OUT BY OTHERS  
 3. COORDINATE ALL FOUNDATION STEPPING AND DEPTHS WITH GRADING, LANDSCAPE AND SITE SERVICES DRAWINGS PREPARED BY OTHERS

NOTE:  
 ALL PRECAST DIVISIONS ARE TO CENTRELINE OF JOINTS AND/OR EDGE OF PANEL

PHASE 3 SHELL BUILDING  
 GFA = 131.66m<sup>2</sup> (1417 s.f.)  
 TOP OF SLAB ELEV. = 0'-0"  
 GEODETIC ELEV. = 246.29 m

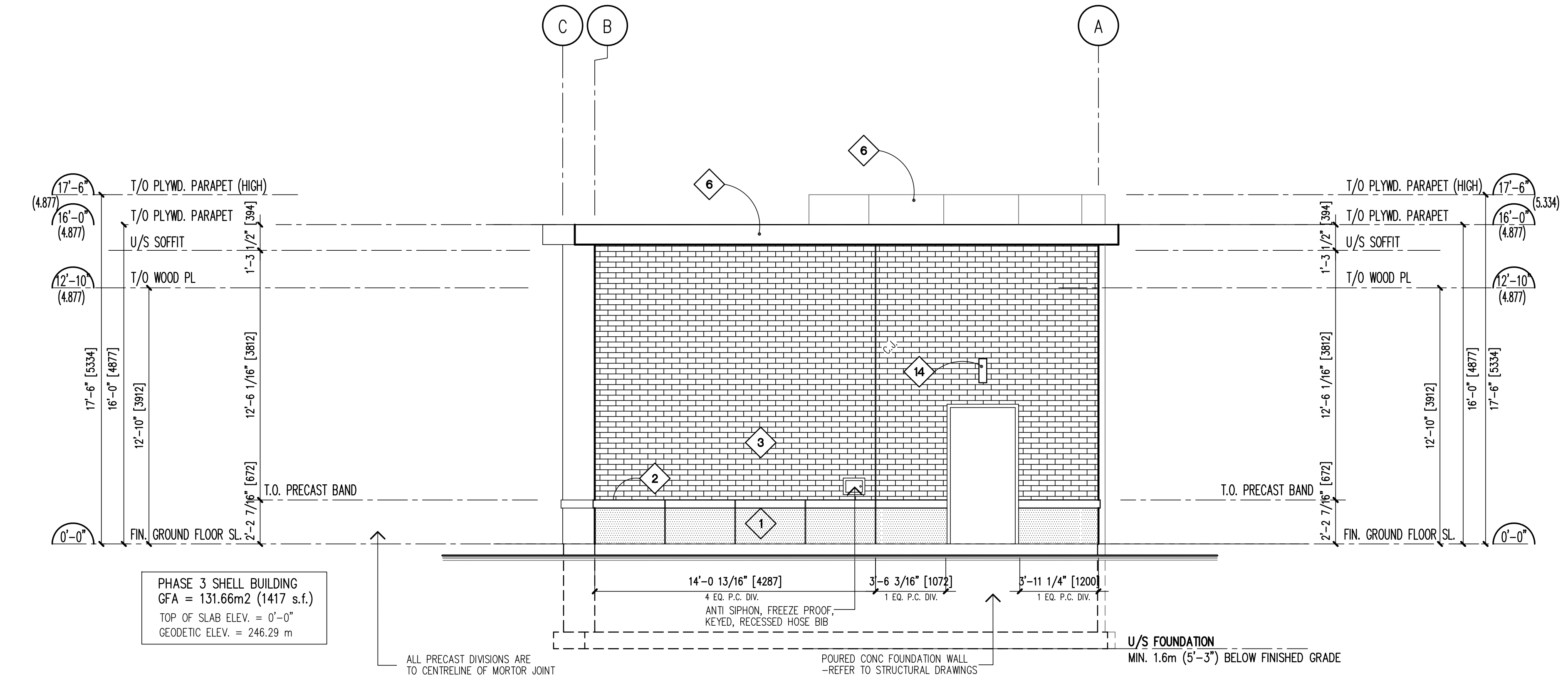
**EXTERIOR MATERIALS LEGEND**

	3 1/2" PRECAST CONC. (acid washed) VENEER
	PRECAST CONC. SILL-SEE WALL SECT. FOR PROFILE
	3 1/2" BRICK VENEER ONLY, CONTEMPORARY BY BRAMPTON BRICK
	ALUM. COMPOSITE PANEL APPROVED MANUFACTURERS: "ALUCOBOND PANELS" BY ALUCOBOND TECHNOLOGIES, "REYNOLBOND ACM" BY ALCOA INC. AND LARSON BY ALUCOIL FINISH: LARSON BY ALUCOIL, COLOUR: GRAPHITE GREY
	PVC HORIZONTAL 6" SIDING PANEL WITH "SHADOW LINE" ("SHANCLAD" OR "LONGBOARD") FINISH: CINNAMON WALNUT, COLOUR: 6046-S
	GLAZING: 2" THERMALLY BROKEN PREFINISH ALUMINUM FRAMES C/W SEALED UNIT, LOW-E, GLAZING GL-A (SEE SPECS) 2000 CURTAIN WALL 4.00" Mullion 6-1/4" OVERALL - 1" Double Glazed COMMERCIAL DESIGN SYSTEMS INC.
	ENTRY SCREEN: PREFINISH ALUMINUM DOOR C/W SEALED UNIT TEMPERED GLAZING GL-B (SEE SPECS) IN THERMALLY BROKEN PREFINISH ALUMINUM FRAME SERIES 400 INSULATED DOORS COMMERCIAL DESIGN SYSTEMS INC.
	PAINTED HOLLOW METAL DOOR AND FRAME
	WALL MOUNTED LIGHT FIXTURE (REFER TO ELECTRICAL DWGS)
	PREFINISH METAL PARAPET CAP FLASHING -SEE DETAILS



**PROPOSED REAR (EAST) ELEVATION**  
 1/4"=1'-0" (1:48)

1 hr MINIMUM REQUIRED FIRE-RESISTANCE RATING FOR NORTH ELEVATION TABLE 3.2.3.7, GROUP A, COMBUSTIBLE or NON-COMBUSTIBLE CONSTRUCTION ALLOWED, CLADDING TO BE NON-COMBUSTIBLE, FOR A MAXIMUM AREA OF UNPROTECTED OPENINGS PERMITTED OF >10 TO 25 REFER TO CODE PLAN DIAGRAM ON SHEET A0.2



**PROPOSED SIDE (NORTH) ELEVATION**  
 1/4"=1'-0" (1:48)

1 hr MINIMUM REQUIRED FIRE-RESISTANCE RATING FOR WEST ELEVATION TABLE 3.2.3.7, GROUP A, COMBUSTIBLE or NON-COMBUSTIBLE CONSTRUCTION ALLOWED, CLADDING TO BE NON-COMBUSTIBLE, FOR A MAXIMUM AREA OF UNPROTECTED OPENINGS PERMITTED OF >10 TO 25 REFER TO CODE PLAN DIAGRAM ON SHEET A0.2

PHASE 3 SHELL BUILDING  
 GFA = 131.66m<sup>2</sup> (1417 s.f.)  
 TOP OF SLAB ELEV. = 0'-0"  
 GEODETIC ELEV. = 246.29 m

DRAWINGS MUST NOT BE SCALED.  
 ALL DIMENSIONS AND INFORMATION SHOWN ON THESE DRAWINGS MUST BE CHECKED AND VERIFIED ON SITE PRIOR TO CONSTRUCTION AND FABRICATION OF ITS COMPONENTS. THE CONTRACTOR MUST REPORT ALL DISCREPANCIES AND ERRORS OR OMISSIONS TO THE ARCHITECT IN WRITING.

UNLESS SPECIFICALLY NOTED OTHERWISE ON THE DRAWINGS NO PROVISIONS HAVE BEEN MADE IN THE DESIGN FOR CONDITIONS OCCURRING DURING CONSTRUCTION. IT SHALL BE THE RESPONSIBILITY OF THE CONTRACTOR TO PROVIDE ALL NECESSARY BRACING, SHORINGS, SHEET PILING OR OTHER TEMPORARY SUPPORTS, TO SAFEGUARD ALL EXISTING OR ADJACENT STRUCTURES AFFECTED BY THIS WORK.  
 REPRODUCTION OF DRAWINGS AND RELATED DOCUMENTS IN WHOLE OR IN PART IS FORBIDDEN WITHOUT WRITTEN PERMISSION OF 3 SIXTY ARCHITECT INC.

ALL DRAWINGS AND RELATED DOCUMENTS ARE THE COPYRIGHT PROPERTY OF 3 SIXTY ARCHITECT INC. AND MUST BE RETURNED UPON REQUEST

No.	DATE:	REVISION
1	JAN 12/23	ISSUED TO TOWN FOR PRECONSULTATION MTG
2	APR. 24/23	ISSUED TO TOWN FOR SPA
3		

**ELEVATION MATERIAL LEGEND:**

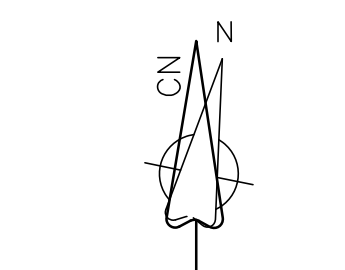
	EXTERIOR INSULATED FINISH SYSTEM
	MASONRY VENEER FINISH
	ACID WASHED PRECAST VENEER
	PREFIN ALUM SIDING

NOTE: ALL LIGHT FIXTURES INDICATED SHALL BE CENTERED ON PANEL OR FEATURE U/N OTHERWISE PROVIDE SMOOTH SURFACE AREA @ ALL FIXTURES LOCATIONS - SIZE TO BE COORD WITH ALL TRADES

NOTE: EIFS DIVISION TO SUBMIT LAYOUT DRAWINGS INDICATING ALL REVEAL LOCATIONS PRIOR TO INSTALLATION FOR REVIEW AND APPROVAL

NOTE: ALL EIFS CONTROL JOINTS TO BE COORDINATED WITH ARCHITECT BEFORE WORK COMMENCES - CONTRACTOR TO PROVIDE LAYOUT DRAWING FOR REVIEW

**3sixty architect inc.**  
 175 Stone Cross  
 Richmond Hill, Ontario L4C 0S8  
 Tel: 416-284-1073  
 Fax: 416-284-1908  
 E-Mail: 3sixty@3sixtyarchitect.ca  
 Web: www.3sixtyarchitect.ca



OWNER/APPLICANT  
**1626725 ONTARIO LIMITED**  
 5110 DUNDAS ST. WEST  
 TORONTO, ONTARIO, M9A 1C2  
 T: 416 605 1149 EMAIL: jim@sturino.ca

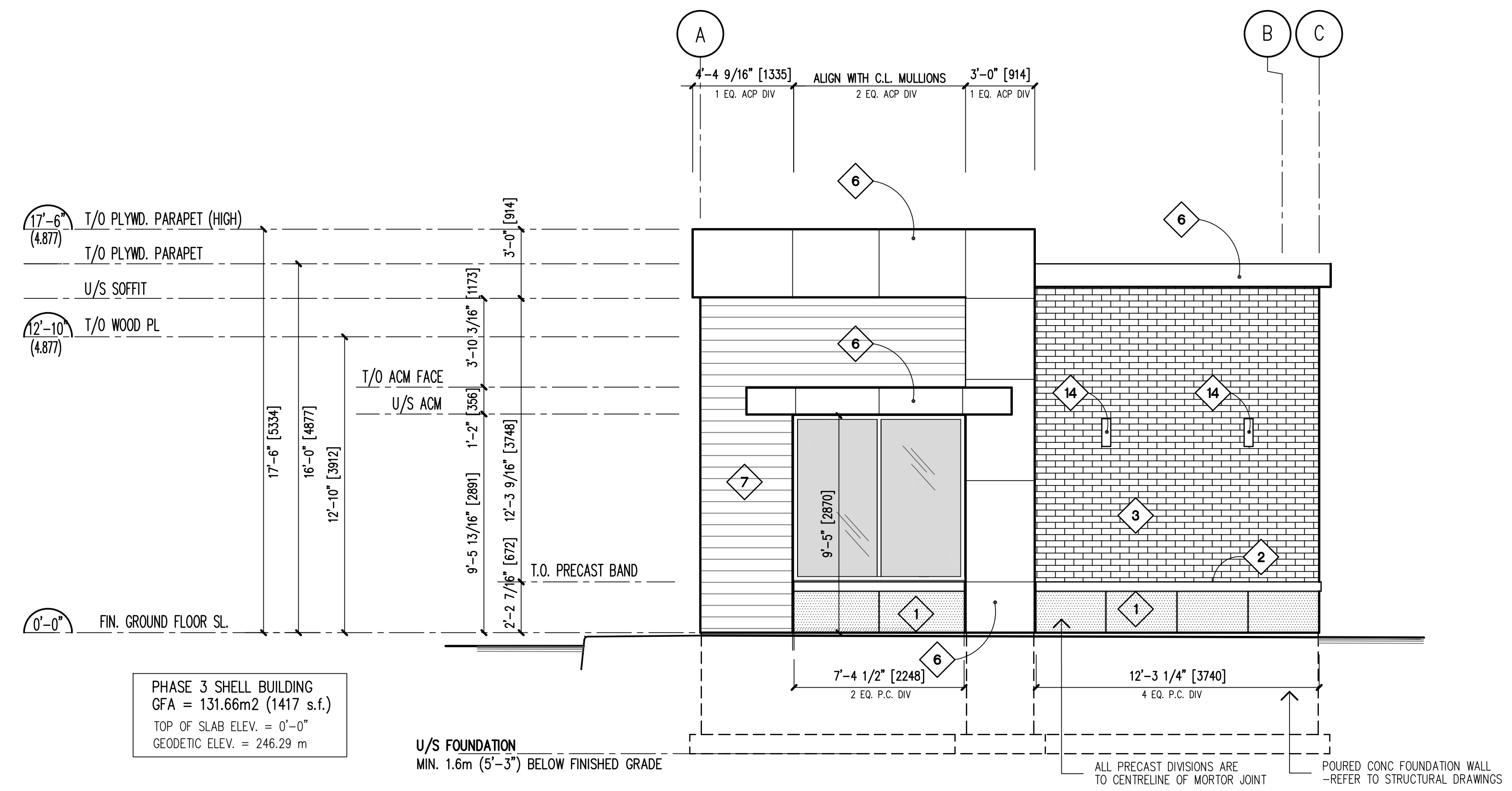
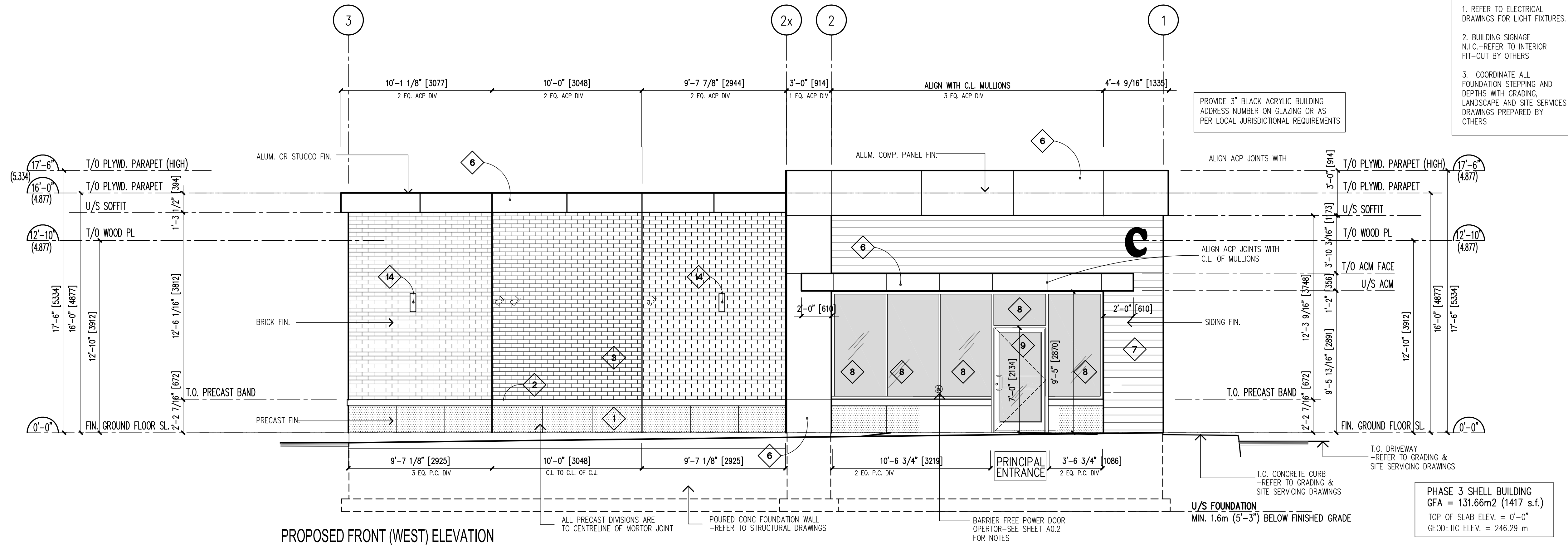
PROPOSED  
**BUILDING 'C'**  
 FOR  
**FUTURE TENANT**

**Proposed Shell Building**  
 Phase 3 Development  
 9281 COUNTY RD. 93

Town of Midland County of Simcoe

EXTERIOR ELEVATIONS  
 FRONT(WEST) & SIDE(SOUTH) COMM. NO. 0272

SCALE AS NOTED DATE NOV. 4, 2021 DRAWING NO.  
 DRAWN FM CHECKED FM SPA 3.0



**EXTERIOR MATERIALS LEGEND**

1	3 1/2" PRECAST CONC. (acid washed) VENEER
2	PRECAST CONC. SILL-SEE WALL SECT. FOR PROFILE
3	3 1/2" BRICK VENEER ONLY, CONTEMPORARY BY BRAMPTON BRICK
6	ALUM. COMPOSITE PANEL APPROVED MANUFACTURERS: 'ALUCOBOND PANELS' BY ALUCOBOND TECHNOLOGIES, 'REYNOLBOND ACM' BY ALCOA INC. AND LARSON BY ALUCOIL FINISH: LARSON BY ALUCOIL, COLOUR: GRAPHITE GREY
7	PVC HORIZONTAL 6" SIDING PANEL WITH 'SHADOW LINE' ('CHAMFLAD' OR 'LONGBOARD') FINISH: CINNAMON WALNUT, COLOUR: 6046-S
8	GLAZING: 2" THERMALLY BROKEN PREFINISH ALUMINUM FRAMES C/W SEALED UNIT, LOW-E, GLAZING GL-A (SEE SPECS) 2000 CURTAIN WALL 4.00" Mullion 6-1/4" OVERALL - 1" Double Glazed COMMERCIAL DESIGN SYSTEMS INC.
9	ENTRY SCREEN: PREFINISH ALUMINUM DOOR C/W SEALED UNIT TEMPERED GLAZING GL-B (SEE SPECS) IN THERMALLY BROKEN PREFINISH ALUMINUM FRAME SERIES 400 INSULATED DOORS COMMERCIAL DESIGN SYSTEMS INC.
13	PAINTED HOLLOW METAL DOOR AND FRAME
14	WALL MOUNTED LIGHT FIXTURE (REFER TO ELECTRICAL DWGS)
15	PREFINISH METAL PARAPET CAP FLASHING -SEE DETAILS

NOTE:  
 1. REFER TO ELECTRICAL DRAWINGS FOR LIGHT FIXTURES.  
 2. BUILDING SIGNAGE N.I.C.-REFER TO INTERIOR FIT-OUT BY OTHERS  
 3. COORDINATE ALL FOUNDATION STEPPING AND DEPTHS WITH GRADING, LANDSCAPE AND SITE SERVICES DRAWINGS PREPARED BY OTHERS