

# **APPENDIX B**

## **EXISTING PARKS INVENTORY AND CONDITION ASSESSMENT**

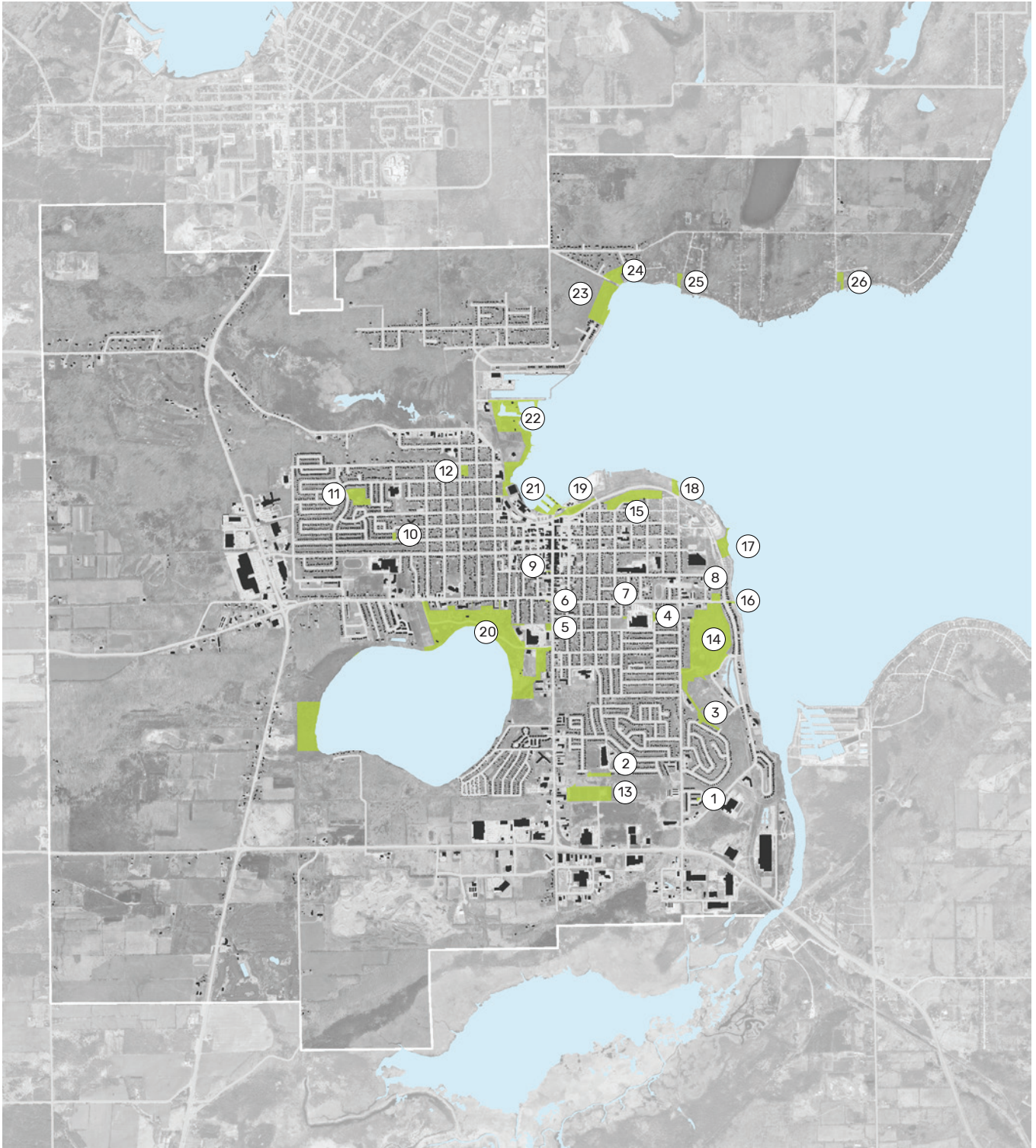


Figure AB.1: Existing Parks

# APPENDIX B

## EXISTING PARKS INVENTORY AND CONDITION ASSESSMENT


The Town of Midland contains over 320 acres of parkland, ranging from small parkettes to community parks with outdoor recreation facilities. Many of Midland's parks consist of playgrounds, sports fields, picnic shelters, basketball courts, trails, naturalized meadows and urban forests. The Town has 26 parks:


1. Bob Merkley Park
2. Trillium Woods Park
3. Quota Park
4. Ernest T Bates Memorial Park
5. Cenotaph
6. Frazer Parkette
7. Regent Park
8. Georgian View Park
9. Neezhoday Park
10. Carpenter Park
11. Mac McAllen Park
12. Bayview Park
13. Galloway Park
14. Tiffin Park
15. Edgehill Park
16. Vas Kuchar Memorial Parkette
17. Veterans Waterfront Park
18. Midland Bay Landing Park
19. Harbourside/ David Onley Park
20. Little Lake
21. Town Dock


22. Pete Pettersen Park
23. McCullough Park
24. Gawley Park
25. Glenbrook Gardens
26. Sunrise Park

The inventory and condition assessment in this report were documented through physically visiting each of the sites, and recorded through photographs and notes. This information was documented on December 4 and 5, 2017 by two team members from thinc design.

Based on visual inspection, park amenities and infrastructure are categorized into three (3) rankings:

 **Good:** Infrastructure is relatively new and is in a safe and working condition. No repairs or replacements are anticipated in the foreseeable future.

 **Fair:** Infrastructure is in a safe and satisfactory condition. There is immediate need for repair/replacement beyond regular preventative maintenance, the need for which should be assessed on a yearly basis.

 **Poor:** Infrastructure is in poor condition, and needs immediate repair or replacement to address safety concerns, damaged elements or missing components.

Each park is reviewed on the following pages, in the above numbered order.



# 1. BOB MERKLEY PARK

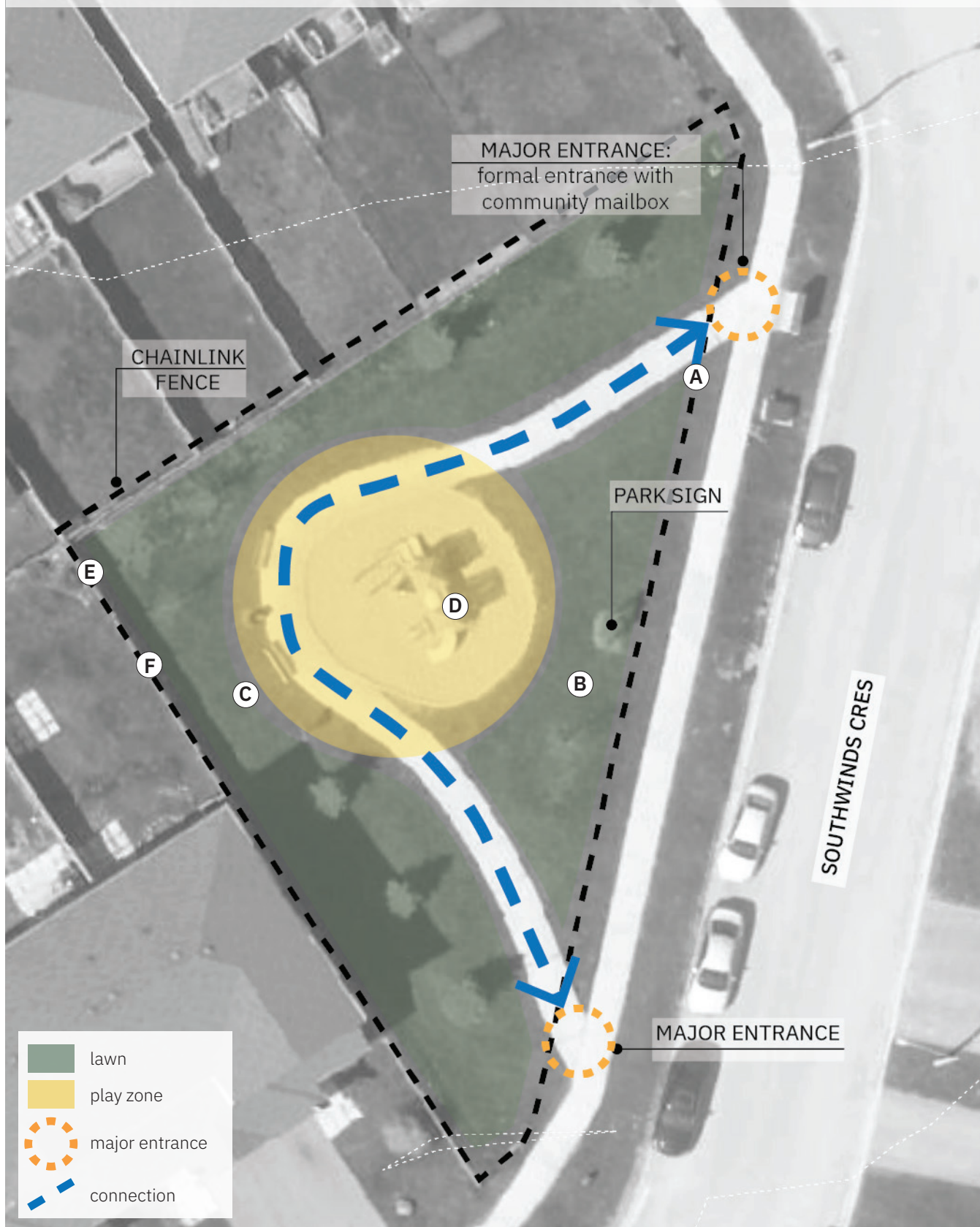


Figure AB.2: Bob Merkley Park Existing Conditions












# ANALYSIS

## context

address	139 Southwinds Cres	topography	mostly flat
size	0.17 ac / 0.07 ha	hydrology	ponding in NW corner

## amenities + condition

■ good 
 ■ fair 
 ■ poor

play structure(s)		one small climber- 3 slides
play surfacing		sand with curb to retain - adequate zone with curb to retain
fence(s)		chainlink along adjacent residential sides
furnishing(s)	  	two red metal benches garbage can park sign
vegetation	 	open lawn deciduous trees has small animal markings
pathway(s)		concrete



**A** small parkette



**B** park sign



**C** park bench



**D** climber



**E** water flowing into park



**F** small animal damage

## 2. TRILLIUM WOODS PARK

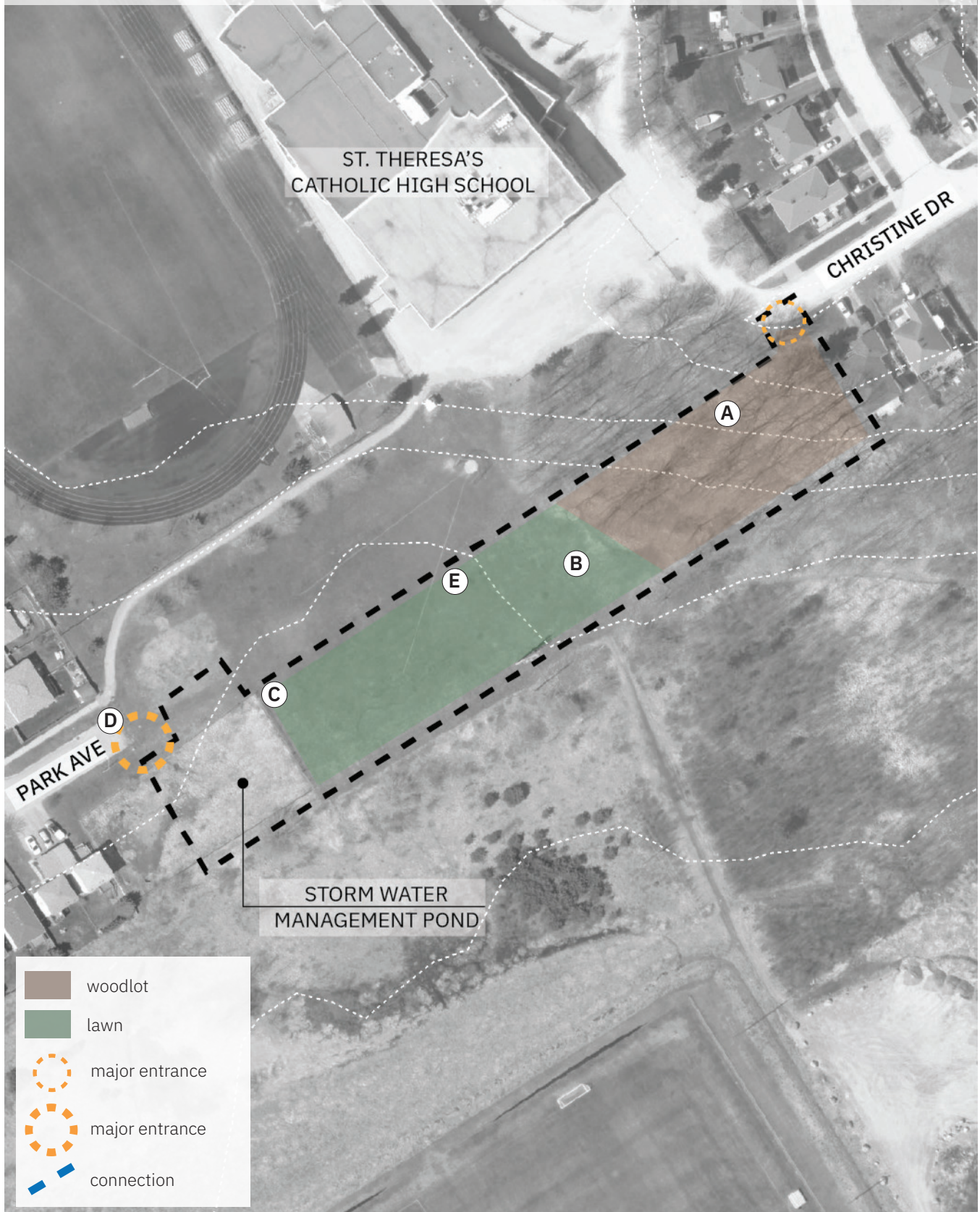


Figure AB.3: Trillium Woods Park Existing Conditions



# ANALYSIS

## context

address	345 Christine Dr
size	1.59 ac / 0.64 ha

## natural features

topography	woodlot slopes to lawn area
hydrology	stormwater management pond

## amenities + condition

■ good
 ■ fair
 ■ poor

vegetation	<span style="color: green;">■</span>	wood lot
	<span style="color: green;">■</span>	open lawn
	<span style="color: green;">■</span>	bioinfiltration planting within pond area
pathway(s)	<span style="color: green;">■</span>	asphalt pathway adjacent to site
	<span style="color: yellow;">■</span>	natural surface in woodlot
fence	<span style="color: green;">■</span>	chainlink fence around stormwater management pond



**A** woodlot trail



**B** open lawn



**C** stormwater management pond



**D** asphalt trail



**E** open lawn



### 3. QUOTA PARK

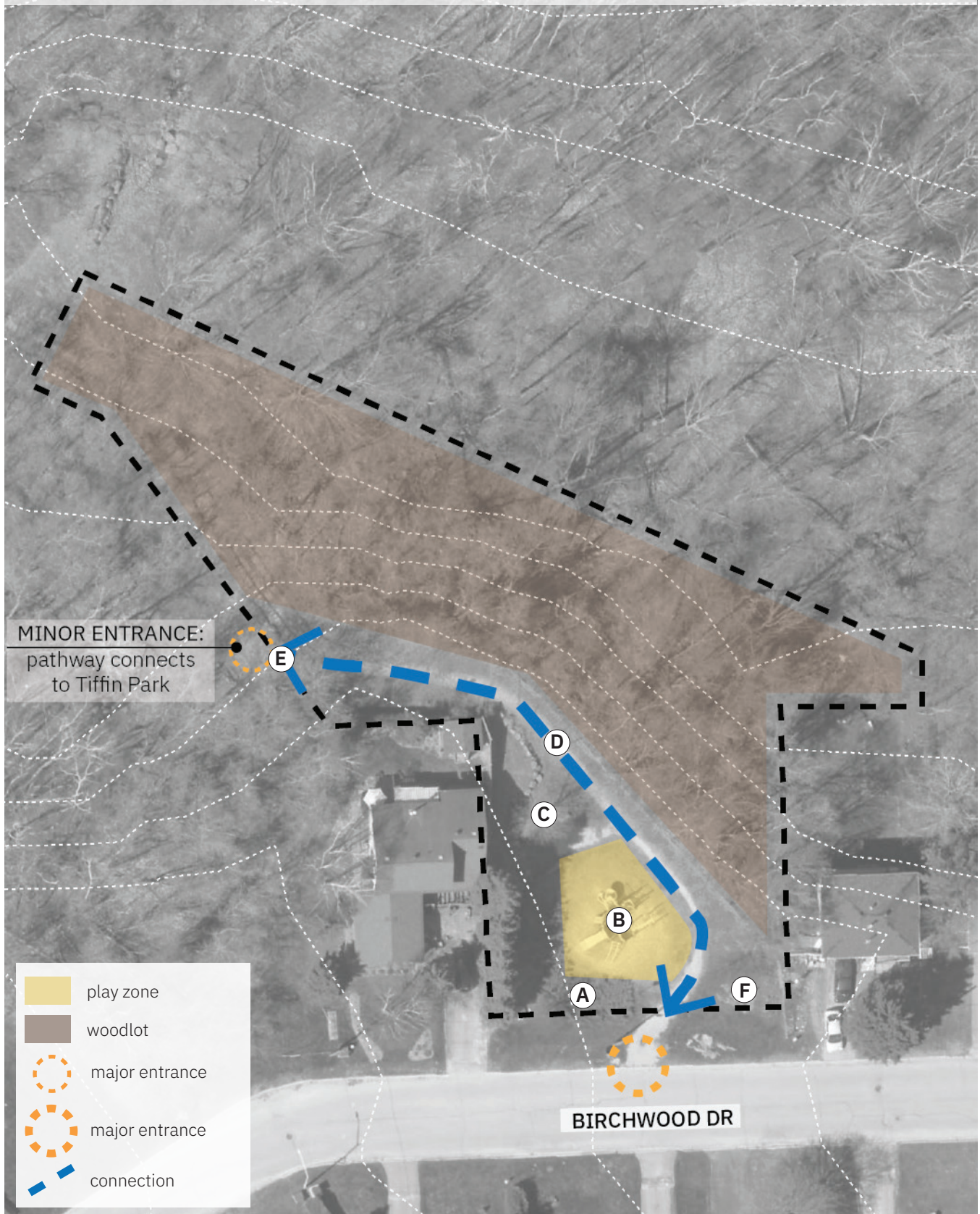


Figure AB.4: Quota Park Existing Conditions



# ANALYSIS

## context

address	746 Birchwood Dr
size	1.34 ac / 0.5 ha

## natural features

topography	parkland flat, woodland slopes away from park
hydrology	no water on site

## amenities + condition

■ good 
 ■ fair 
 ■ poor

play structure(s)	<span style="color: yellow;">■</span>	junior play- 2 slides
play surfacing	<span style="color: red;">■</span>	sand- inadequate safety zone
furnishing(s)	<span style="color: red;">■</span> <span style="color: green;">■</span>	park bench (2) park sign
stair	<span style="color: green;">■</span>	wooden stairs down to Tiffin Park connection
vegetation	<span style="color: green;">■</span> <span style="color: green;">■</span> <span style="color: yellow;">■</span>	woodlot ornamental planting at park sign coniferous plant bed
pathway(s)	<span style="color: yellow;">■</span>	granular pathway from roadway to wooden stairs
fence	<span style="color: green;">■</span>	chain link fence at top of slope



**A** coniferous plant bed



**B** play equipment



**C** seating area



**D** granular pathway



**E** wooden steps to Tiffin Park



**F** park sign

## 4. ERNEST T BATES MEMORIAL PARK

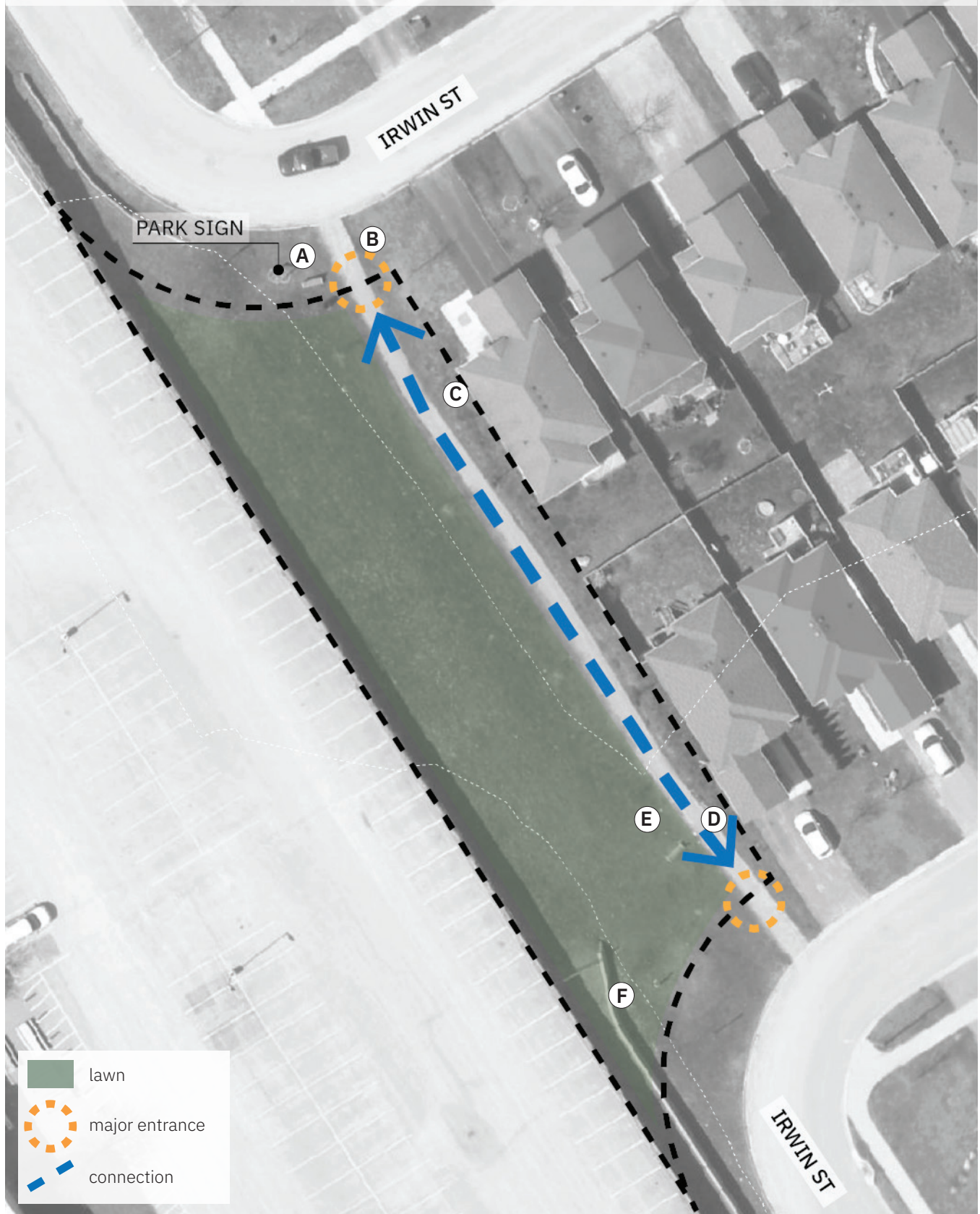


Figure AB.5: Ernest T Bates Memorial Park Existing Conditions



# ANALYSIS

## context

address	374 Irwin St
size	0.38 ac / 0.15 ha

## natural features

topography	gentle slope towards homes
hydrology	no water on site

## amenities + condition

■ good
 ■ fair
 ■ poor

fence(s)	<span style="color: green;">■</span> wood property fence on SW side <span style="color: green;">■</span> small chainlink fence at edge of retaining wall
furnishing(s)	<span style="color: green;">■</span> two wooden benches <span style="color: green;">■</span> park sign
vegetation	<span style="color: green;">■</span> newly planted trees <span style="color: green;">■</span> open lawn
retaining wall	<span style="color: green;">■</span> retaining wall to the south of pathway
pathway(s)	<span style="color: green;">■</span> asphalt
lighting	<span style="color: green;">■</span> two light posts



**A** park sign



**B** pathway through park



**C** pathway through park



**D** park bench



**E** pathway through park



**F** retaining wall with fence

## 5. CENOTAPH

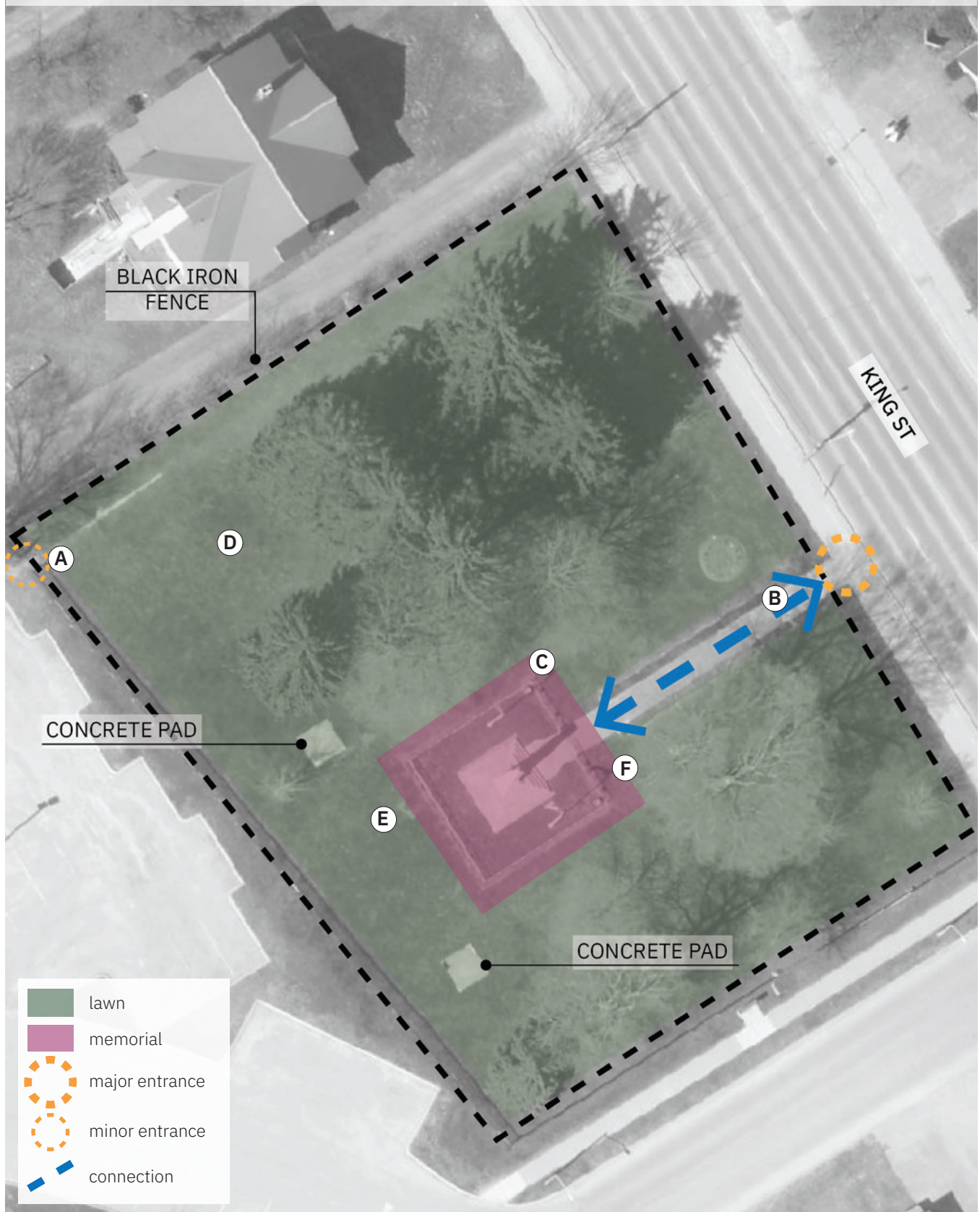


Figure AB.6: Cenotaph Existing Conditions



# ANALYSIS

## context

address	454 King St	topography	flat
size	0.71 ac / 0.29 ha	hydrology	no water on site

## amenities + condition

■ good 
 ■ fair 
 ■ poor

fence(s)	<div style="display: flex; align-items: center;"> <span style="width: 15px; height: 15px; background-color: yellow; margin-right: 5px;"></span>                     iron fence along 3 sides of property- opening in NW corner                 </div> <div style="display: flex; align-items: center;"> <span style="width: 15px; height: 15px; background-color: green; margin-right: 5px;"></span>                     small metal fence directly surrounding Cenotaph                 </div>
furnishing(s)	<div style="display: flex; align-items: center;"> <span style="width: 15px; height: 15px; background-color: green; margin-right: 5px;"></span>                     two flag poles                 </div> <div style="display: flex; align-items: center;"> <span style="width: 15px; height: 15px; background-color: green; margin-right: 5px;"></span>                     one bench                 </div>
vegetation	<div style="display: flex; align-items: center;"> <span style="width: 15px; height: 15px; background-color: green; margin-right: 5px;"></span>                     several large, older trees                 </div> <div style="display: flex; align-items: center;"> <span style="width: 15px; height: 15px; background-color: green; margin-right: 5px;"></span>                     four new trees                 </div> <div style="display: flex; align-items: center;"> <span style="width: 15px; height: 15px; background-color: green; margin-right: 5px;"></span>                     two small, protected oaks                 </div> <div style="display: flex; align-items: center;"> <span style="width: 15px; height: 15px; background-color: green; margin-right: 5px;"></span>                     shaded lawn area                 </div>
pathway(s)	<div style="display: flex; align-items: center;"> <span style="width: 15px; height: 15px; background-color: green; margin-right: 5px;"></span>                     concrete walkway from King St to Cenotaph lined with boxwoods                 </div> <div style="display: flex; align-items: center;"> <span style="width: 15px; height: 15px; background-color: yellow; margin-right: 5px;"></span>                     two concrete pads                 </div>
lighting	<div style="display: flex; align-items: center;"> <span style="width: 15px; height: 15px; background-color: yellow; margin-right: 5px;"></span>                     one arm fastened to tree                 </div> <div style="display: flex; align-items: center;"> <span style="width: 15px; height: 15px; background-color: yellow; margin-right: 5px;"></span>                     two small bollards- spot light on Cenotaph                 </div>
memorial	<div style="display: flex; align-items: center;"> <span style="width: 15px; height: 15px; background-color: green; margin-right: 5px;"></span>                     memorial commemorating Canada's War Veterans                 </div>



**A** minor entrance



**B** concrete pathway



**C** decorative fence



**D** lawn area with old and new trees



**E** protected oak tree



**F** light fixture fastened on tree



## 6. FRAZER PARKETTE



Figure AB.7: Frazer Parkette Existing Conditions

# ANALYSIS

## context

address	378 King St
size	0.11 ac / 0.05 ha

## natural features

topography	slope towards intersection
hydrology	no water on site

## amenities + condition

■ *good*
■ *fair*
■ *poor*

furnishing(s)	<span style="color: green;">■</span> park sign
vegetation	<span style="color: green;">■</span> open lawn <span style="color: green;">■</span> buffer planting to the south east
pathway(s)	<span style="color: green;">■</span> asphalt driveway with curb on the west side





## 7. REGENT PARK



Figure AB.8: Regent Park Existing Conditions



# ANALYSIS

## context

address	College/Hannah
size	0.16 ac / 0.07 ha

## natural features

topography	flat
hydrology	no water on site

## amenities + condition

■ good
 ■ fair
 ■ poor

play structure(s)	<span style="color: yellow;">■</span>	junior play- 4 twists
play surfacing	<span style="color: red;">■</span>	sand- inadequate safety zone
furnishing(s)	<span style="color: green;">■</span> <span style="color: green;">■</span>	wood/concrete benches (2) park sign
vegetation	<span style="color: green;">■</span> <span style="color: green;">■</span> <span style="color: green;">■</span>	open lawn display planting bed ornamental planting at park sign
fence	<span style="color: green;">■</span> <span style="color: green;">■</span>	chain link fence on two sides (industrial) wood fence along residential side



**A** small parkette



**B** play equipment



**C** display plant bed



**D** bench

## 8. GEORGIAN VIEW PARK

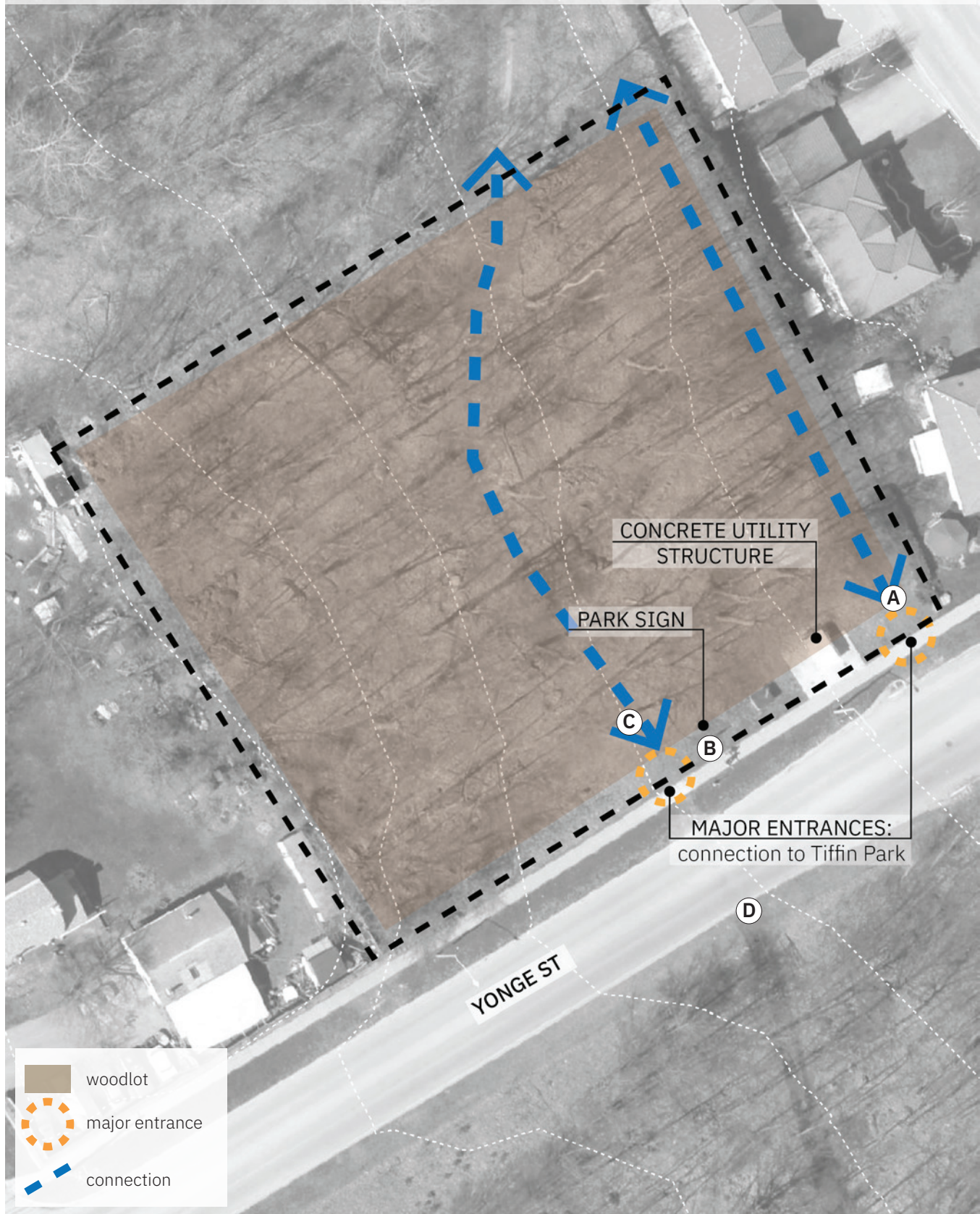


Figure AB.9: Georgian View Park Existing Conditions



# ANALYSIS

## context

address	154 Yonge St
size	1.1 ac / 0.45 ha

## natural features

topography	sloping towards water
hydrology	no water on site

## amenities + condition

■ good
 ■ fair
 ■ poor

furnishing(s)	<span style="color: green;">■</span> park sign
vegetation	<span style="color: green;">■</span> woodlot
pathway(s)	<span style="color: yellow;">■</span> natural surface



## 9. NEEZHODAY PARK

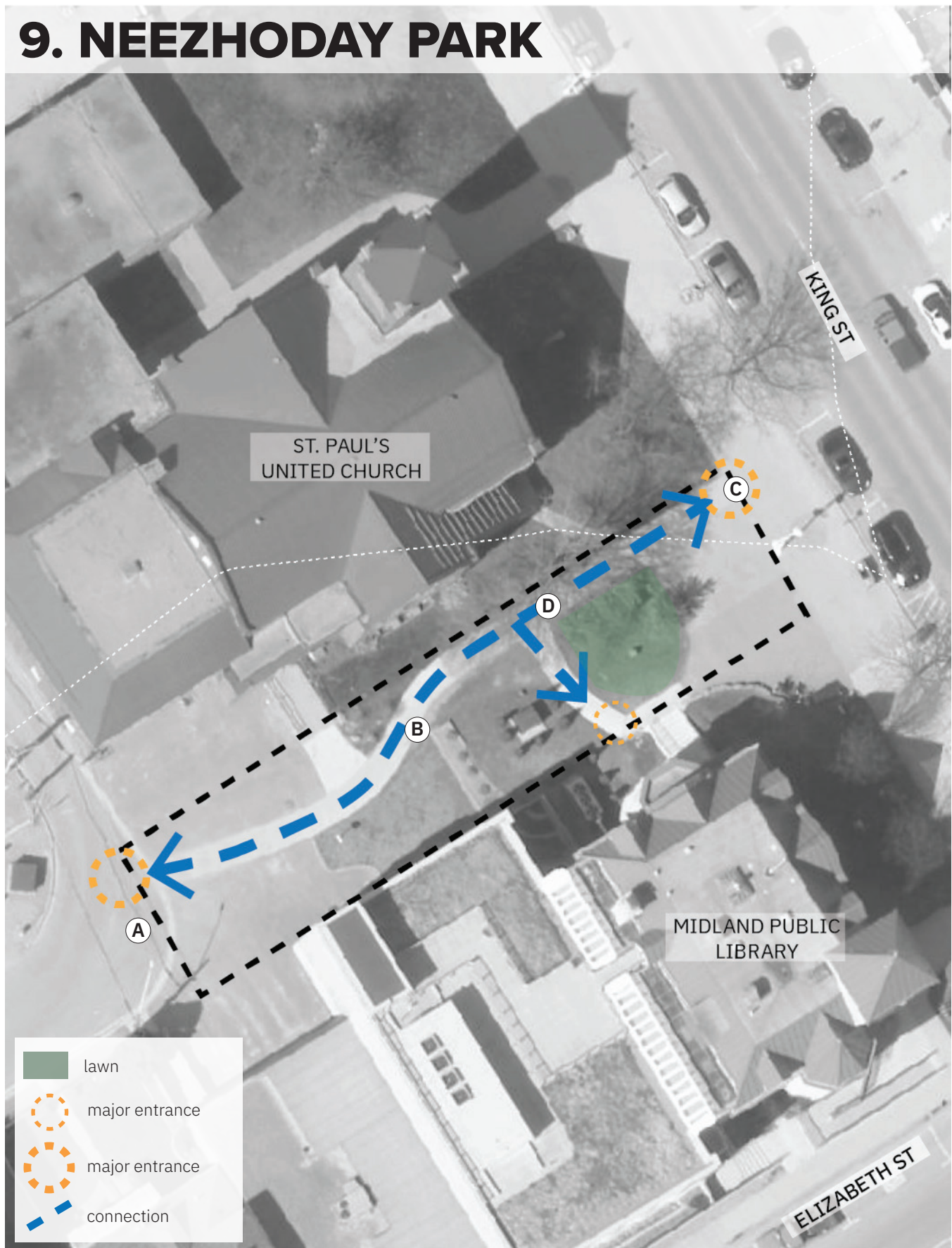


Figure AB.10: Neezhoday Park Existing Conditions



# ANALYSIS

## context

address	King St
size	0.11 ac / 0.05 ha

## natural features

topography	flat
hydrology	no water on site

## amenities + condition

■ good
 ■ fair
 ■ poor

furnishing(s)	<span style="color: green;">■</span>	park sign
vegetation	<span style="color: green;">■</span>	ornamental planting near Bayshore Dr
	<span style="color: green;">■</span>	small lawn
	<span style="color: green;">■</span>	retaining wall/planting bed
	<span style="color: green;">■</span>	large deciduous tree on site- shaded
pathway(s)	<span style="color: green;">■</span>	concrete pathway connecting parking lot and King St
	<span style="color: green;">■</span>	connection to Midland Public Library



# 10. CARPENTER PARK



Figure AB.11: Carpenter Park Existing Conditions



# ANALYSIS

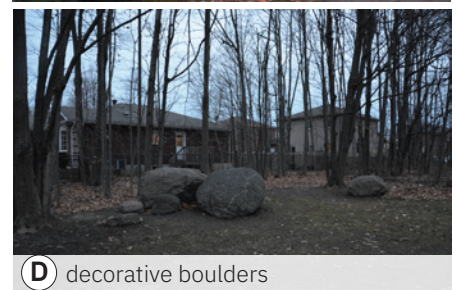
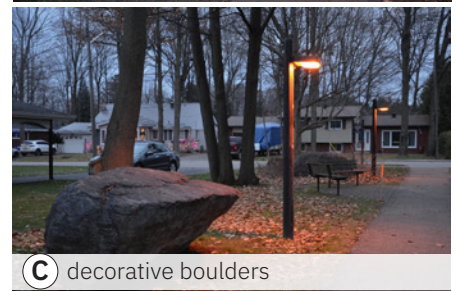
## context

address	850 Dominion Ave	topography	flat
size	0.44 ac / 0.18 ha	hydrology	no water on site

## amenities + condition

■ *good*
■ *fair*
■ *poor*

fence(s)	<span style="color: green;">■</span>	chainlink along adjacent residential
furnishing(s)	<span style="color: yellow;">■</span> <span style="color: green;">■</span> <span style="color: green;">■</span>	two wooden benches on unit paver park sign decorative boulders
vegetation	<span style="color: green;">■</span> <span style="color: green;">■</span>	woodlot small lawn space
pathway(s)	<span style="color: green;">■</span>	asphalt
lighting	<span style="color: yellow;">■</span>	5 light poles





# 11. MAC MCALLEN PARK



Figure AB.12: Mac McAllen Park Existing Conditions



# ANALYSIS

## context

address	135 Woodland Dr
size	5.17 ac / 2.1 ha

## natural features

topography	mostly flat
hydrology	no water on site

## amenities + condition

■ good
 ■ fair
 ■ poor

play structure(s)	<span style="color: yellow;">■</span> three bay swingset <span style="color: yellow;">■</span> monkey bar climber <span style="color: yellow;">■</span> senior climber <span style="color: yellow;">■</span> natural play- sand pit, logs, slide on berm
play surfacing	<span style="color: red;">■</span> sand- inadequate safety zone <span style="color: red;">■</span> mulch- inadequate safety zone
furnishing(s)	<span style="color: green;">■</span> park sign <span style="color: green;">■</span> bleachers at baseball diamond <span style="color: yellow;">■</span> picnic table (2)
sports field + type	<span style="color: green;">■</span> basketball court <span style="color: green;">■</span> baseball diamond
vegetation	<span style="color: green;">■</span> newly planted trees around baseball diamond <span style="color: green;">■</span> woodlot <span style="color: green;">■</span> display plantings at park sign
pathway(s)	<span style="color: green;">■</span> granular pathway connection Griffin St to parking lot
fence	<span style="color: green;">■</span> chain link fence enclosing baseball diamond
parking	<span style="color: green;">■</span> asphalt parking



**A** baseball diamond



**B** play equipment



**C** basketball court



**D** granular pathway



**E** natural play



**F** parking lot

# 12. BAYVIEW PARK



Figure AB.13: Bayview Park Existing Conditions



# ANALYSIS

## context

address	87 Sixth St	topography	mostly flat
size	1.34 ac / 0.5 ha	hydrology	no water on site

## amenities + condition

■ good
 ■ fair
 ■ poor

play structure(s)	<div style="display: flex; flex-direction: column; gap: 5px;"> <div><span style="color: yellow;">■</span> one large climber- 3 slides</div> <div><span style="color: yellow;">■</span> one small climber- elephant</div> <div><span style="color: red;">■</span> double swing set with 2 baby, 1 regular and 3 missing swings</div> </div>
play surfacing	<span style="color: red;">■</span> sand - inadequate zone
fence(s)	<span style="color: green;">■</span> chainlink around park
sports field + type	<span style="color: yellow;">■</span> asphalt basketball court with green paint and white linework
stairs	<div style="display: flex; flex-direction: column; gap: 5px;"> <div><span style="color: green;">■</span> concrete stairs into the park (with railing)</div> <div><span style="color: yellow;">■</span> stairs along SW retaining wall (leads into chainlink fence)</div> </div>
furnishing(s)	<span style="color: red;">■</span> picnic table
retaining wall(s)	<div style="display: flex; flex-direction: column; gap: 5px;"> <div><span style="color: yellow;">■</span> south west interior of the park</div> <div><span style="color: red;">■</span> north exterior of the park</div> </div>
vegetation	<div style="display: flex; flex-direction: column; gap: 5px;"> <div><span style="color: yellow;">■</span> open lawn</div> <div><span style="color: green;">■</span> 4 newly planted trees</div> </div>





# 13. GALLOWAY PARK

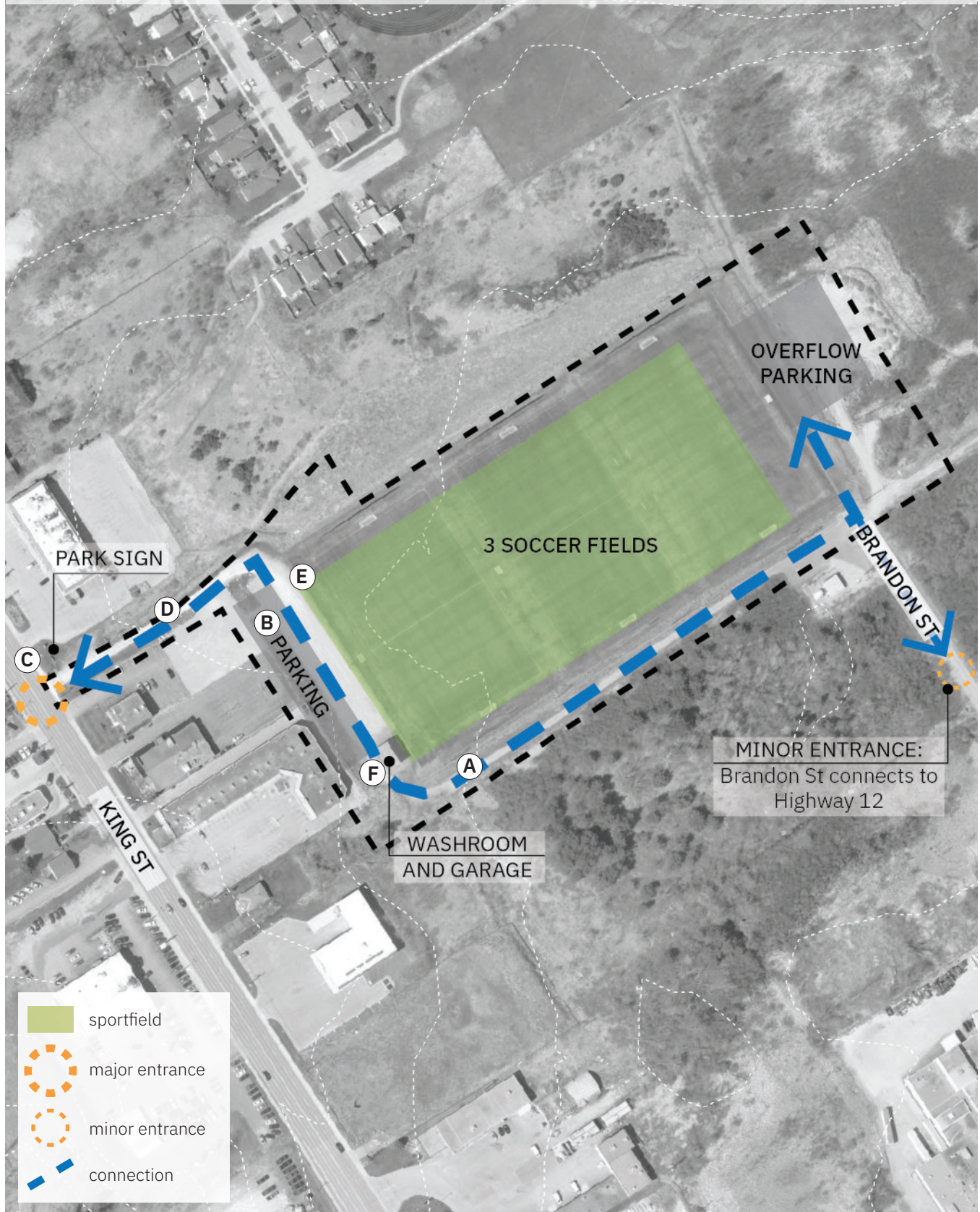


Figure AB.14: Galloway Park Existing Conditions



# ANALYSIS

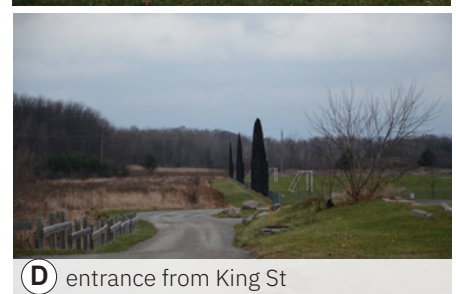
## context

address	Brandon St	topography	mostly flat
size	11.54 ac / 4.59 ha	hydrology	swale/ditch along south dirt road

## amenities + condition

■ good 
 ■ fair 
 ■ poor

fence(s)	<div style="display: flex; align-items: center;"> <div style="width: 15px; height: 15px; background-color: green; margin-right: 5px;"></div> <div>chainlink fence around entire site</div> </div> <div style="display: flex; align-items: center;"> <div style="width: 15px; height: 15px; background-color: green; margin-right: 5px;"></div> <div>six black back-catching fences</div> </div>
furnishing(s)	<div style="display: flex; align-items: center;"> <div style="width: 15px; height: 15px; background-color: green; margin-right: 5px;"></div> <div>three bleachers</div> </div> <div style="display: flex; align-items: center;"> <div style="width: 15px; height: 15px; background-color: green; margin-right: 5px;"></div> <div>four team benches</div> </div> <div style="display: flex; align-items: center;"> <div style="width: 15px; height: 15px; background-color: green; margin-right: 5px;"></div> <div>park sign at King St.</div> </div> <div style="display: flex; align-items: center;"> <div style="width: 15px; height: 15px; background-color: red; margin-right: 5px;"></div> <div>signage along Hwy 12 to Brandon St entrance</div> </div>
vegetation	<div style="display: flex; align-items: center;"> <div style="width: 15px; height: 15px; background-color: green; margin-right: 5px;"></div> <div>newly planted trees to the west of parking</div> </div> <div style="display: flex; align-items: center;"> <div style="width: 15px; height: 15px; background-color: green; margin-right: 5px;"></div> <div>open lawn</div> </div>
parking	<div style="display: flex; align-items: center;"> <div style="width: 15px; height: 15px; background-color: green; margin-right: 5px;"></div> <div>gravel parking lot with decorative rock</div> </div> <div style="display: flex; align-items: center;"> <div style="width: 15px; height: 15px; background-color: yellow; margin-right: 5px;"></div> <div>overflow parking lot to the east of soccer fields</div> </div>
sports field + type	<div style="display: flex; align-items: center;"> <div style="width: 15px; height: 15px; background-color: green; margin-right: 5px;"></div> <div>three soccer fields</div> </div>
structure	<div style="display: flex; align-items: center;"> <div style="width: 15px; height: 15px; background-color: green; margin-right: 5px;"></div> <div>washroom/storage building</div> </div>
roadway	<div style="display: flex; align-items: center;"> <div style="width: 15px; height: 15px; background-color: green; margin-right: 5px;"></div> <div>gravel entrance from King St. to parking lot</div> </div> <div style="display: flex; align-items: center;"> <div style="width: 15px; height: 15px; background-color: yellow; margin-right: 5px;"></div> <div>dirt entrance from Brandon along south edge of fields</div> </div>



# 14. TIFFIN PARK



Figure AB.15: Tiffin Park Existing Conditions



# ANALYSIS

## context

address	539 William St
size	46.82 ac / 18.9 ha

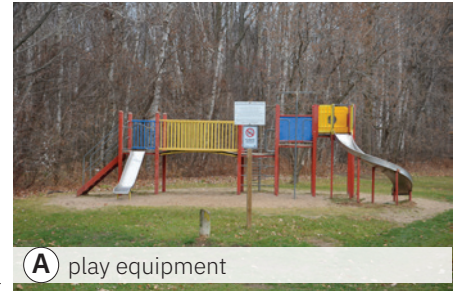
## natural features

topography	play area flat, steep slopes in woodlot
hydrology	no water on site

## amenities + condition

■ good ■ fair ■ poor

play structure(s)	■ junior play- 2 slides ■ double bay swing
play surfacing	■ sand- inadequate safety zone
furnishing(s)	■ park sign ■ picnic table ■ bleachers
sports field + type	■ one tennis court ■ eight pickleball courts ■ baseball diamond with scoreboard
lighting	■ lighting for tennis/pickleball ■ lighting for baseball diamond
stair	■ unit paving stairs from parking to baseball diamond
vegetation	■ woodlot with dog off leash ■ ornamental planting at park sign ■ coniferous plant bed
pathway(s)	■ unit paving from steps to parking lot ■ dirt pathway in woodlot
fence	■ chain link fence around tennis/pickleball ■ chain link fence around baseball diamond
structure(s)	■ washroom facilities
parking	■ one gravel lot ■ one asphalt lot



A play equipment



B natural surface to dog off leash



C tennis and pickleball



D baseball diamond



E steps from diamond to parking



F opening to woodlot / steep slope



# 15. EDGEHILL PARK

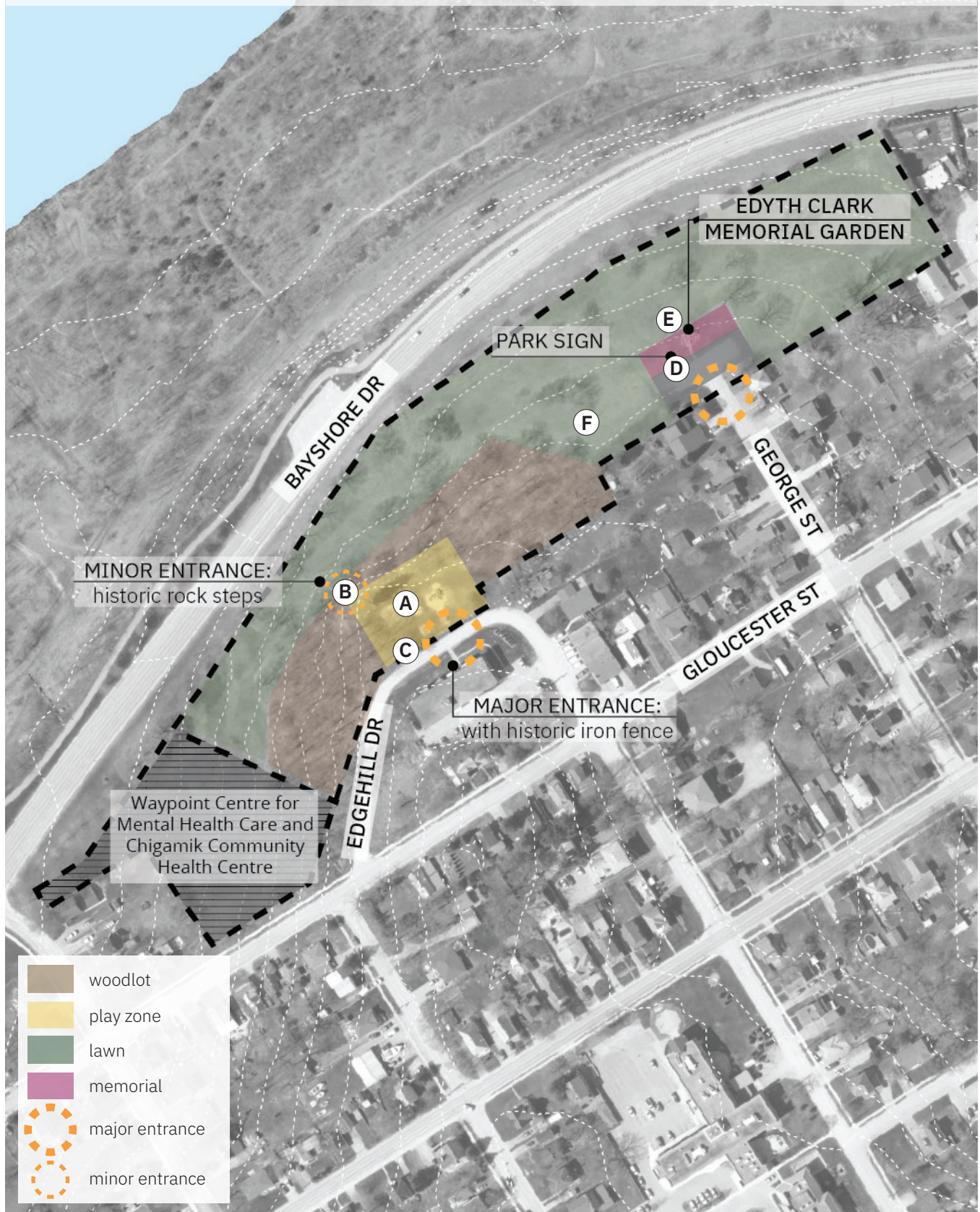


Figure AB.16: Edg Hill Park Existing Conditions



# ANALYSIS

## context

address	287 Bayshore Dr
size	9.32 ac / 3.77 ha

## natural features

topography	slopes towards Bayshore Dr
hydrology	no water on site

## amenities + condition

■ good 
 ■ fair 
 ■ poor

play structure(s)	<div style="display: flex; flex-direction: column; gap: 5px;"> <div><span style="color: yellow;">■</span> one stand alone slide</div> <div><span style="color: yellow;">■</span> one small climber</div> <div><span style="color: yellow;">■</span> one large climber- two slides and monkey bars</div> <div><span style="color: yellow;">■</span> double swing- 4 regular and 2 baby swings</div> <div><span style="color: yellow;">■</span> 4 teeter totters</div> </div>
play surfacing	<div style="display: flex; flex-direction: column; gap: 5px;"> <div><span style="color: red;">■</span> sand- inadequate zone</div> <div><span style="color: red;">■</span> no protective surfacing under teeter totter</div> </div>
fence(s)	<span style="color: yellow;">■</span> historic iron fence along Edgehill Rd
furnishing(s)	<div style="display: flex; flex-direction: column; gap: 5px;"> <div><span style="color: green;">■</span> one garbage</div> <div><span style="color: green;">■</span> 2 benches at memorial</div> <div><span style="color: green;">■</span> 1 bench at play area</div> <div><span style="color: green;">■</span> picnic table at play area</div> <div><span style="color: green;">■</span> park sign at memorial</div> </div>
vegetation	<div style="display: flex; flex-direction: column; gap: 5px;"> <div><span style="color: green;">■</span> woodlot surrounding play area</div> <div><span style="color: green;">■</span> open lawn area surrounding memorial</div> </div>
stairs	<div style="display: flex; flex-direction: column; gap: 5px;"> <div><span style="color: green;">■</span> new armoustone steps to memorial</div> <div><span style="color: yellow;">■</span> historic brick steps (x2) leading down to Bayshore Dr from play area</div> </div>
parking	<div style="display: flex; flex-direction: column; gap: 5px;"> <div><span style="color: green;">■</span> small asphalt pad for a few cars at memorial</div> <div><span style="color: green;">■</span> street parking for play area</div> </div>
lighting	<span style="color: green;">■</span> one light post in play area
memorial	<span style="color: green;">■</span> memorial garden and seating area for Edyth Clark



**A** playground elements



**B** historic brick steps



**C** historic fence



**D** park sign



**E** memorial with seating



**F** lawn and woodlot

# 16. VAS KUCHAR MEMORIAL PARKETTE

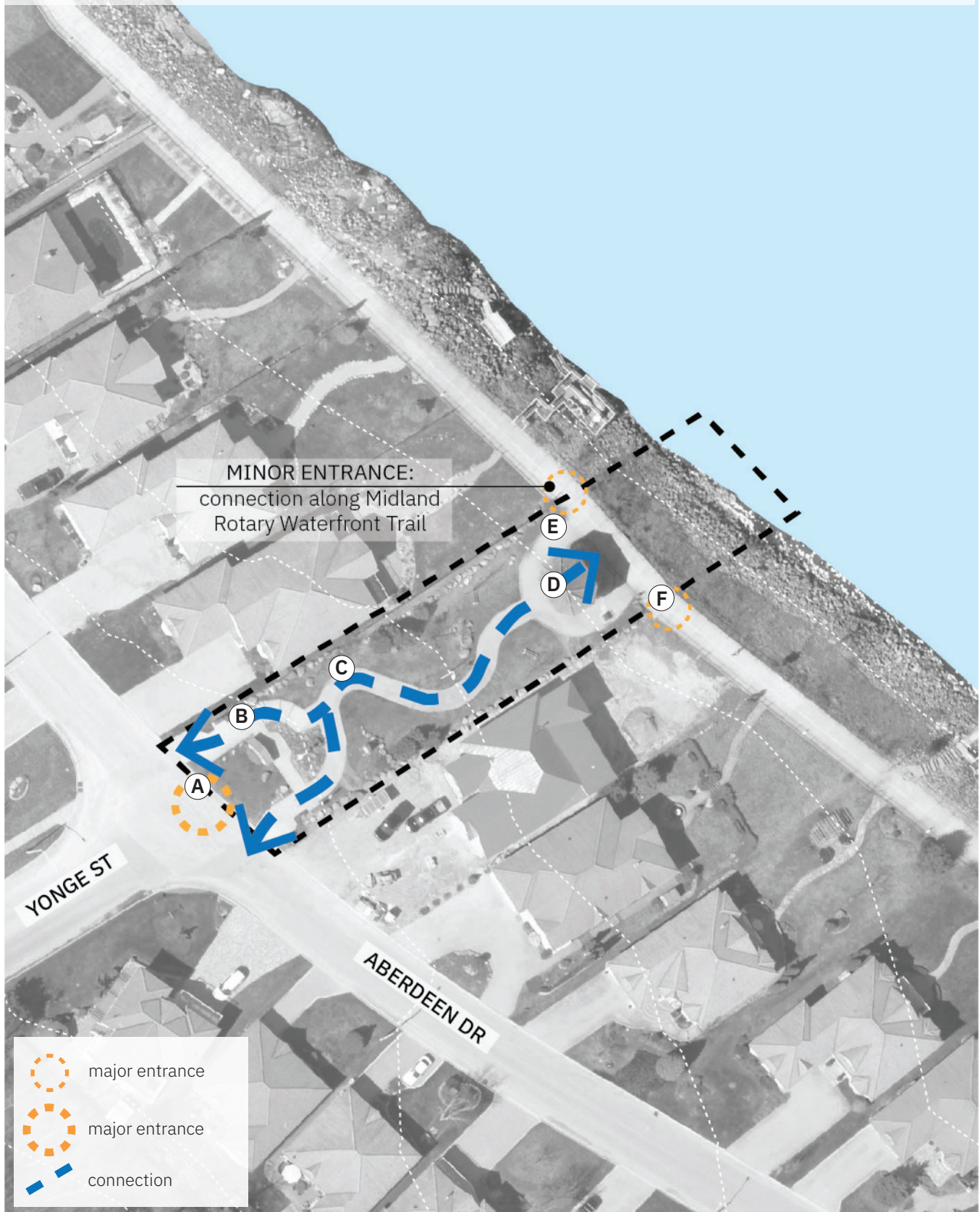


Figure AB.17: Vas Kuchar Memorial Parkette Existing Conditions



# ANALYSIS

## context

address	Yonge/Aberdeen
size	0.42 ac / 0.17 ha

## natural features

topography	slopes towards water
hydrology	Midland Bay

## amenities + condition

■ good 
 ■ fair 
 ■ poor

furnishing(s)	<div style="display: flex; flex-direction: column; gap: 5px;"> <div><span style="color: green;">■</span> park sign</div> <div><span style="color: green;">■</span> wood/concrete benches</div> <div><span style="color: green;">■</span> interpretive panels</div> </div>
lighting	<span style="color: green;">■</span> lit pathway
vegetation	<div style="display: flex; flex-direction: column; gap: 5px;"> <div><span style="color: green;">■</span> open lawn</div> <div><span style="color: green;">■</span> display planting</div> </div>
pathway(s)	<div style="display: flex; flex-direction: column; gap: 5px;"> <div><span style="color: green;">■</span> concrete walkway- ramps and stairs</div> <div><span style="color: green;">■</span> connection to waterfront trail along shoreline</div> </div>
structure(s)	<span style="color: green;">■</span> shade structure/gazebo with seating



# 17. VETERANS WATERFRONT PARK

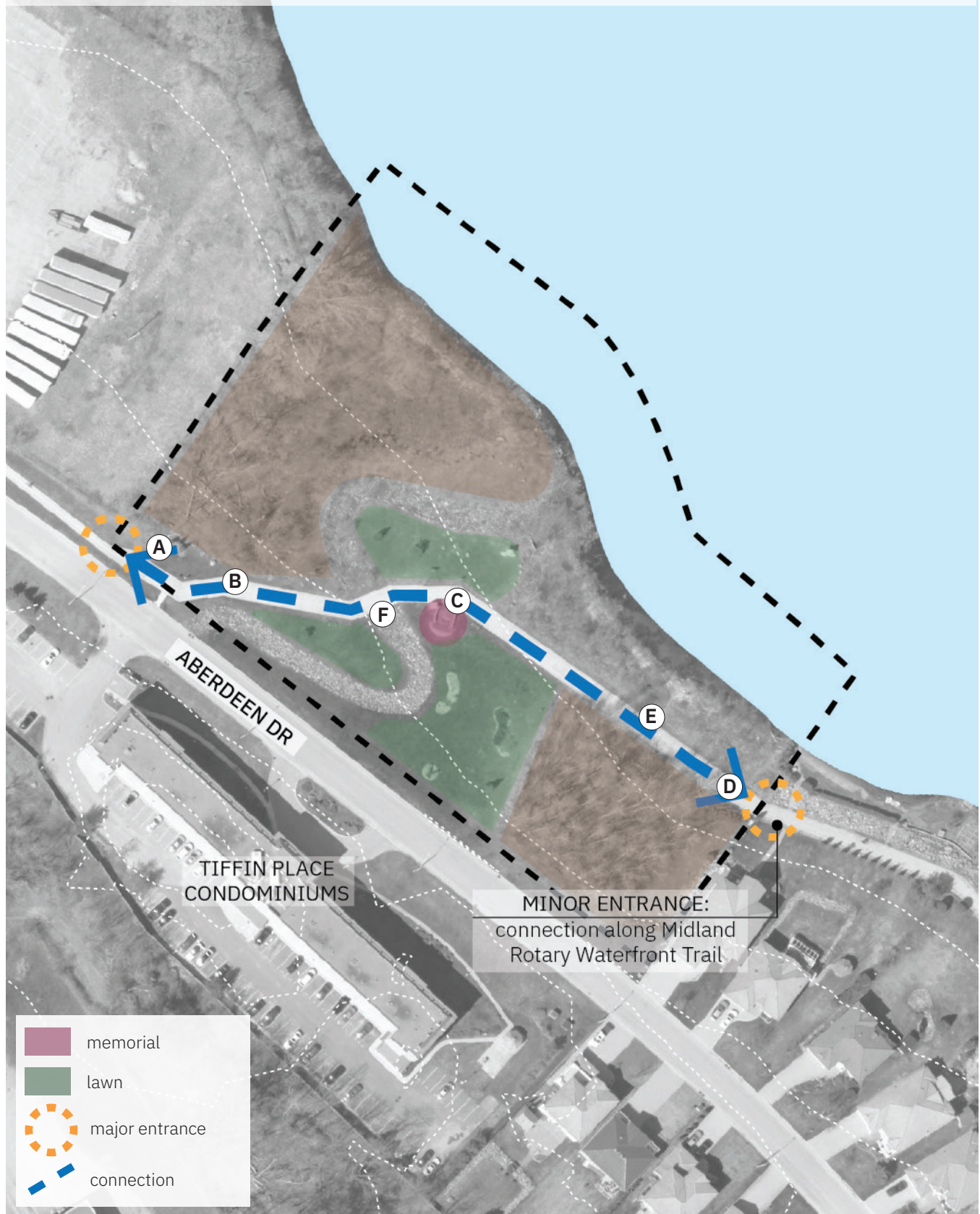


Figure AB.18: Veterans Waterfront Park Existing Conditions



# ANALYSIS

## context

address	281 Aberdeen Blvd
size	20.68 ac / 8.37 ha

## natural features

topography	slopes towards water
hydrology	drainage swale

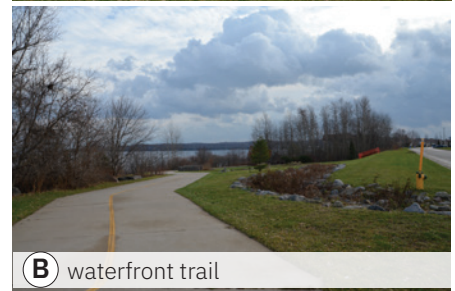
## amenities + condition

■ good 
 ■ fair 
 ■ poor

furnishing(s)	<div> <div style="display: inline-block; width: 15px; height: 15px; background-color: green; margin-right: 5px;"></div> park sign                     <div style="display: inline-block; width: 15px; height: 15px; background-color: green; margin-right: 5px;"></div> trash + recycling                     <div style="display: inline-block; width: 15px; height: 15px; background-color: yellow; margin-right: 5px;"></div> flag pole                     <div style="display: inline-block; width: 15px; height: 15px; background-color: green; margin-right: 5px;"></div> interpretive signage                     <div style="display: inline-block; width: 15px; height: 15px; background-color: green; margin-right: 5px;"></div> trail signage                 </div>
memorial	<div> <div style="display: inline-block; width: 15px; height: 15px; background-color: green; margin-right: 5px;"></div> rock wall with inscriptions                 </div>
vegetation	<div> <div style="display: inline-block; width: 15px; height: 15px; background-color: green; margin-right: 5px;"></div> open lawn                     <div style="display: inline-block; width: 15px; height: 15px; background-color: green; margin-right: 5px;"></div> woodlot                 </div>
pathway(s)	<div> <div style="display: inline-block; width: 15px; height: 15px; background-color: green; margin-right: 5px;"></div> asphalt multi-use trail (waterfront trail connection)                 </div>
water access	<div> <div style="display: inline-block; width: 15px; height: 15px; background-color: yellow; margin-right: 5px;"></div> shoreline restoration                 </div>



**A** entrance sign and flag pole



**B** waterfront trail



**C** bench and inscribed wall



**D** connection to waterfront trail



**E** shoreline restoration



**F** drainage swale

## 18. MIDLAND BAY LANDING PARK

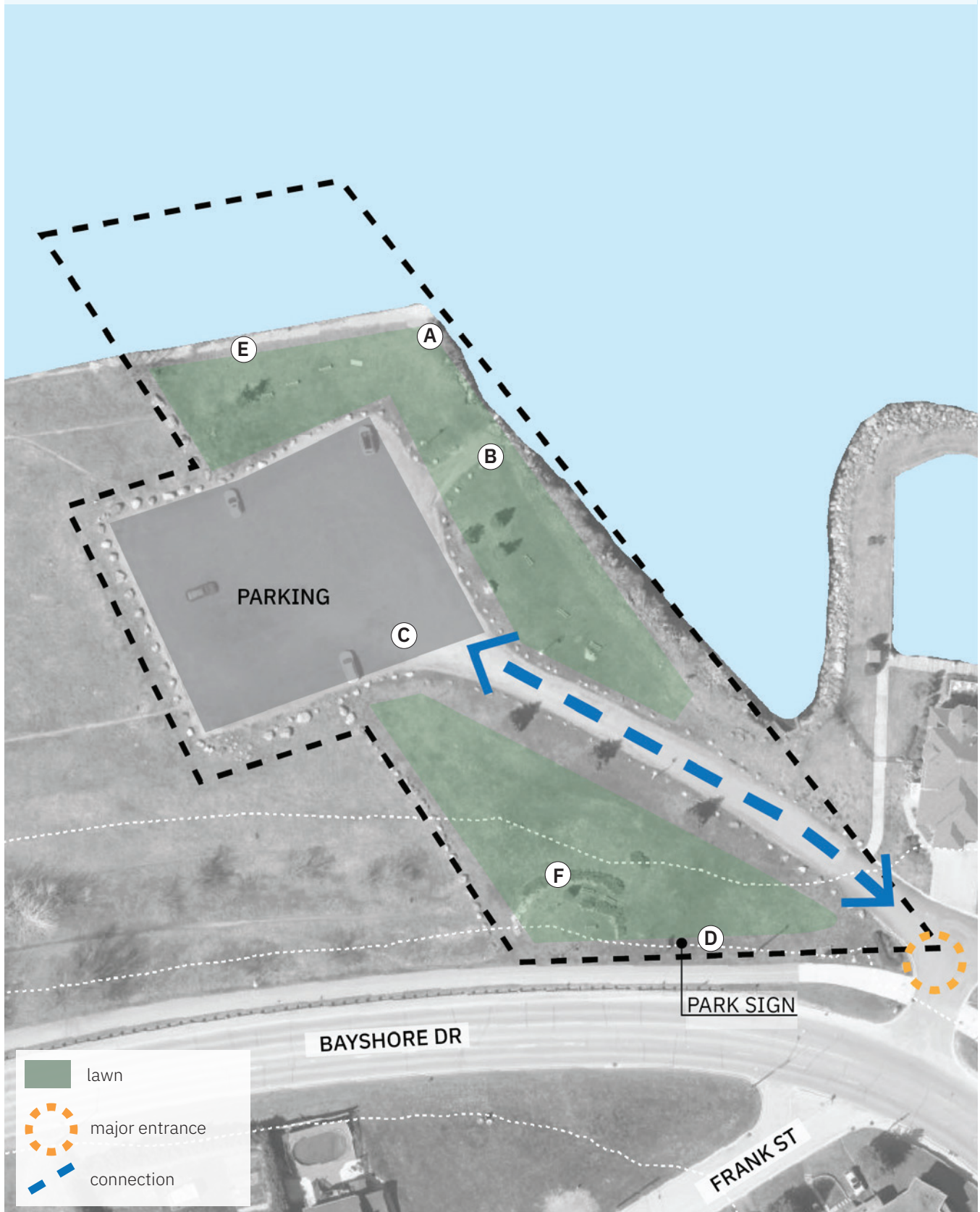


Figure AB.19: Midland Bay Landing Park Existing Conditions



# ANALYSIS

## context

address	420 Bayshore Dr
size	1.8 ac / 0.73 ha

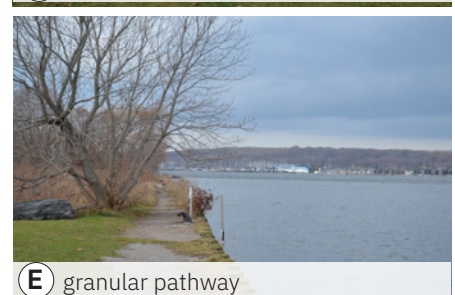
## natural features

topography	slope from road to parking lot
hydrology	Midland Bay

## amenities + condition

■ good
 ■ fair
 ■ poor

furnishing(s)	<span style="color: green;">■</span> wood/concrete benches (14) <span style="color: green;">■</span> park sign <span style="color: green;">■</span> trash + recycling + fish hook disposal
vegetation	<span style="color: green;">■</span> ornamental planting near Bayshore Dr <span style="color: green;">■</span> open lawn
water access	<span style="color: red;">■</span> boat launch <span style="color: green;">■</span> fishing
pathway(s)	<span style="color: yellow;">■</span> informal granular walking along waters edge
parking	<span style="color: red;">■</span> asphalt parking lot
lighting	<span style="color: green;">■</span> one light post at boat launch



## 19. HARBOURSIDE PARK / DAVID ONLEY PARK



Figure AB.20: Harbourside Park / David Onley Park Existing Conditions



# ANALYSIS

## context

address	475 Bayshore Dr
size	3.49 ac / 1.4 ha

## natural features

topography	generally flat
hydrology	fountain adjacent to memorial

## amenities + condition

■ good ■ fair ■ poor

play structure(s)	■ accessible junior play- 3 slides ■ monkey bars
play surfacing	■ mulch
furnishing(s)	■ wood picnic table in play area ■ wood/concrete bench in play area ■ wood/concrete bench along pathway ■ wood picnic table in lawn area ■ park sign ■ bike fix station ■ wooden bridge in display garden
vegetation	■ open lawn ■ young trees along multiuse trail ■ horticultural/display garden
pathway(s)	■ asphalt multi-use pathway
lighting	■ lighting along waterfront trail
memorial	■ memorial for 'those who died on the job' ■ time capsule display
fence	■ white metal fence along play area adjacent to Bayshore Dr
structure	■ arbour at the Peace Garden



A time capsule with planting



B water feature



C David Onley Park pathway



D Harbourview playground

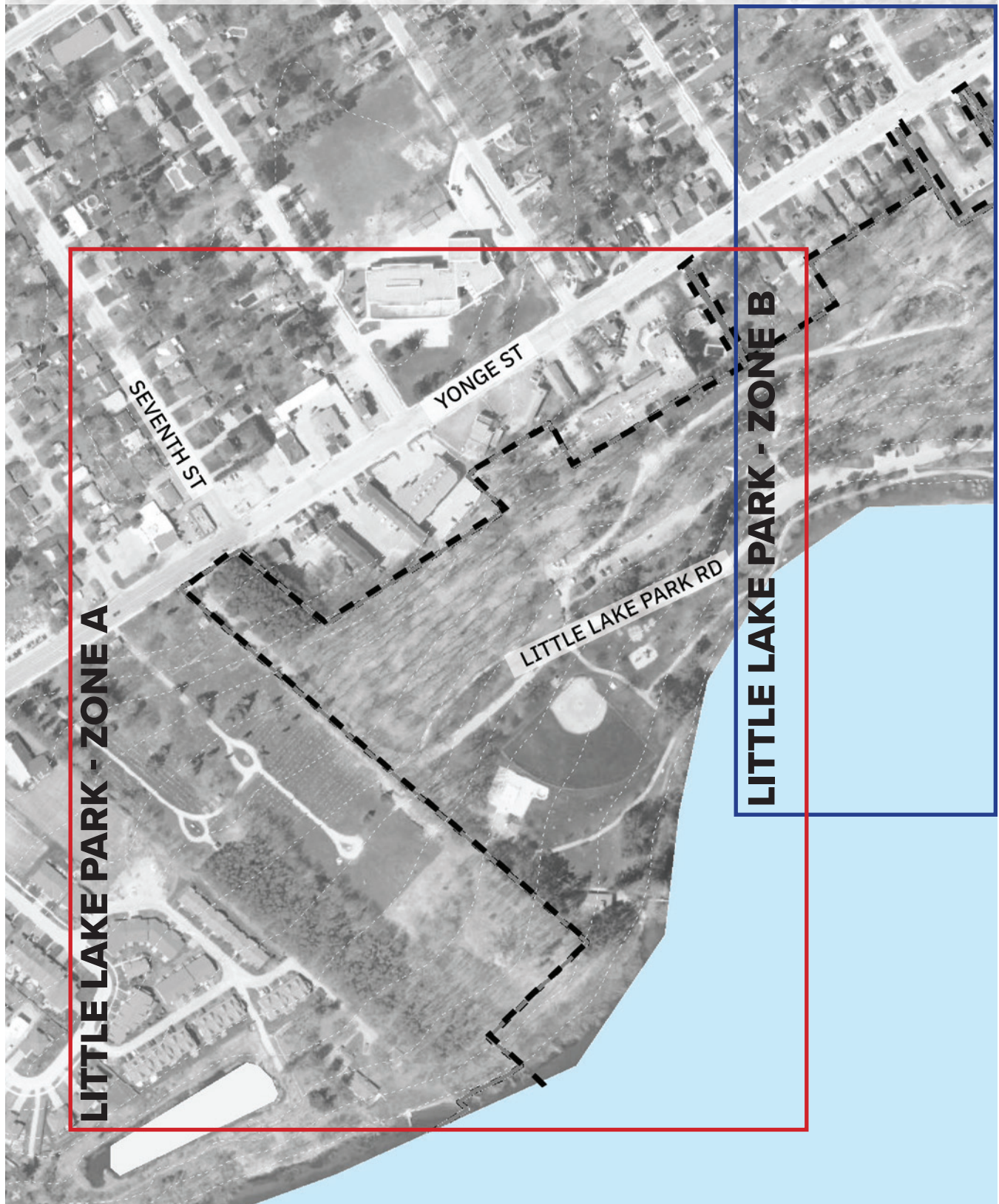


E waterfront asphalt pathway



F damaged bridge within display garden

## 20. LITTLE LAKE





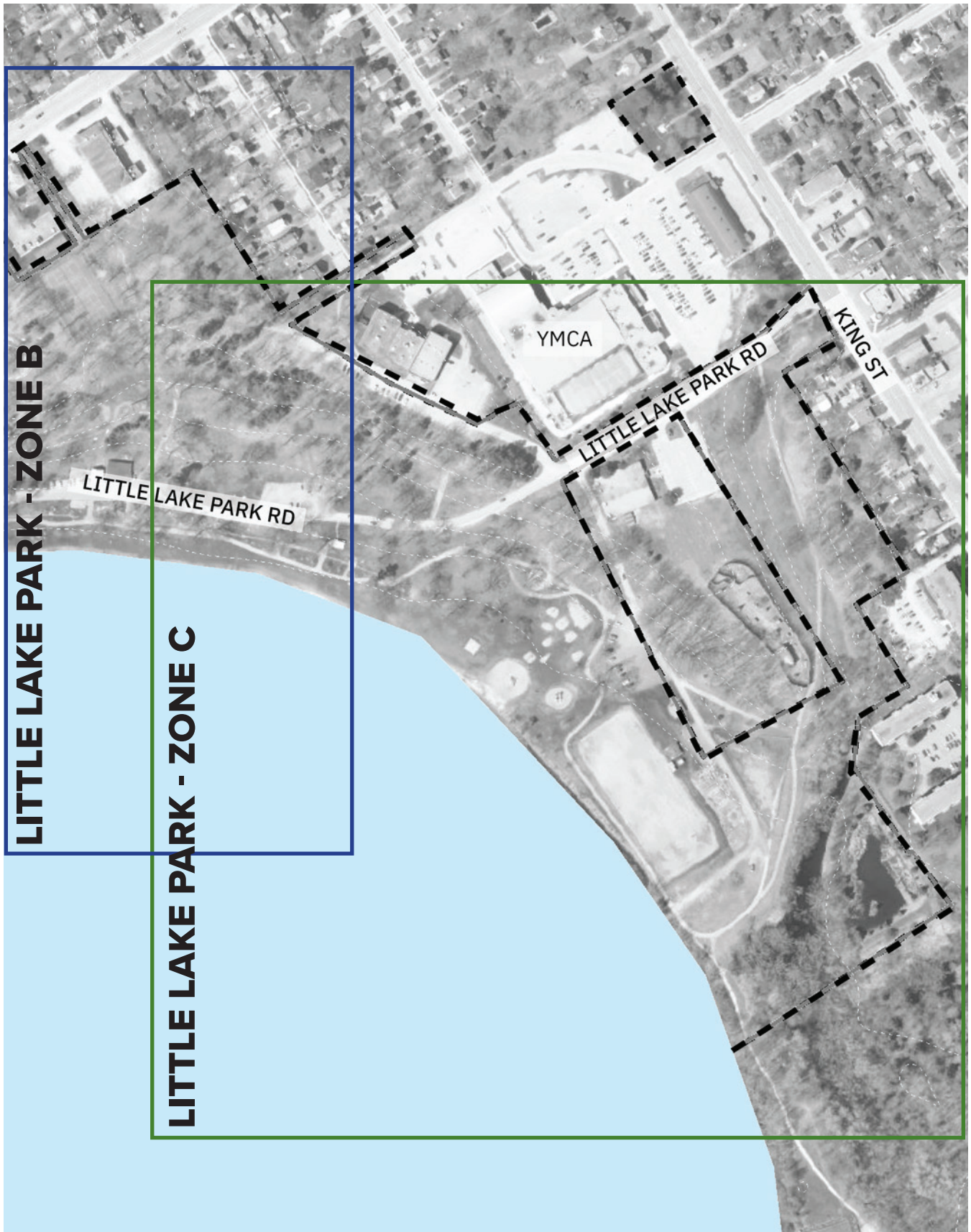


Figure AB.21: Little Lake Existing Conditions Key Map



## 20. LITTLE LAKE – ZONE A



Figure AB.22: Little Lake Existing Conditions Key Map



# ANALYSIS

## context

address	617 Yonge St
size	412.81 ac / 167 ha

## natural features

topography	slope towards lake
hydrology	Little Lake

## amenities + condition

■ good
 ■ fair
 ■ poor

play structure(s)	<span style="color: green;">■</span> junior play- 2 slides <span style="color: green;">■</span> senior play- large slide <span style="color: green;">■</span> spring toys (2) <span style="color: green;">■</span> teeter totter <span style="color: green;">■</span> monkey bars <span style="color: yellow;">■</span> two bay swingset <span style="color: yellow;">■</span> single bay swing
play surfacing	<span style="color: red;">■</span> sand- inadequate safety zone
furnishing(s)	<span style="color: green;">■</span> wood/concrete bench <span style="color: yellow;">■</span> interpretive signage
sports field + type	<span style="color: green;">■</span> disc golf <span style="color: green;">■</span> one baseball diamond <span style="color: green;">■</span> one skateboard park
vegetation	<span style="color: green;">■</span> woodlot <span style="color: green;">■</span> prescribed burn area
pathway(s)	<span style="color: green;">■</span> asphalt multi-use pathway <span style="color: yellow;">■</span> dirt trail within woodlot
lighting	<span style="color: green;">■</span> lighting along waterfront trail
roadway	<span style="color: green;">■</span> roadway throughout the park
fence	<span style="color: yellow;">■</span> wood fence along roadway
parking	<span style="color: yellow;">■</span> parking lot above Little Lake Park Rd, adjacent to Lions Club Picnic Shelter gazebo <span style="color: yellow;">■</span> six parking stalls adjacent to skateboard park
structure	<span style="color: green;">■</span> Lions Club Picnic Shelter
stairs	<span style="color: green;">■</span> concrete stair to Lions Club Picnic Shelter <span style="color: red;">■</span> concrete stair behind Picnic Shelter



**A** play structure



**B** skateboard park



**C** interpretive panel



**D** concrete steps



**E** baseball diamond



**F** Lions Club Picnic Shelter

## 20. LITTLE LAKE – ZONE B

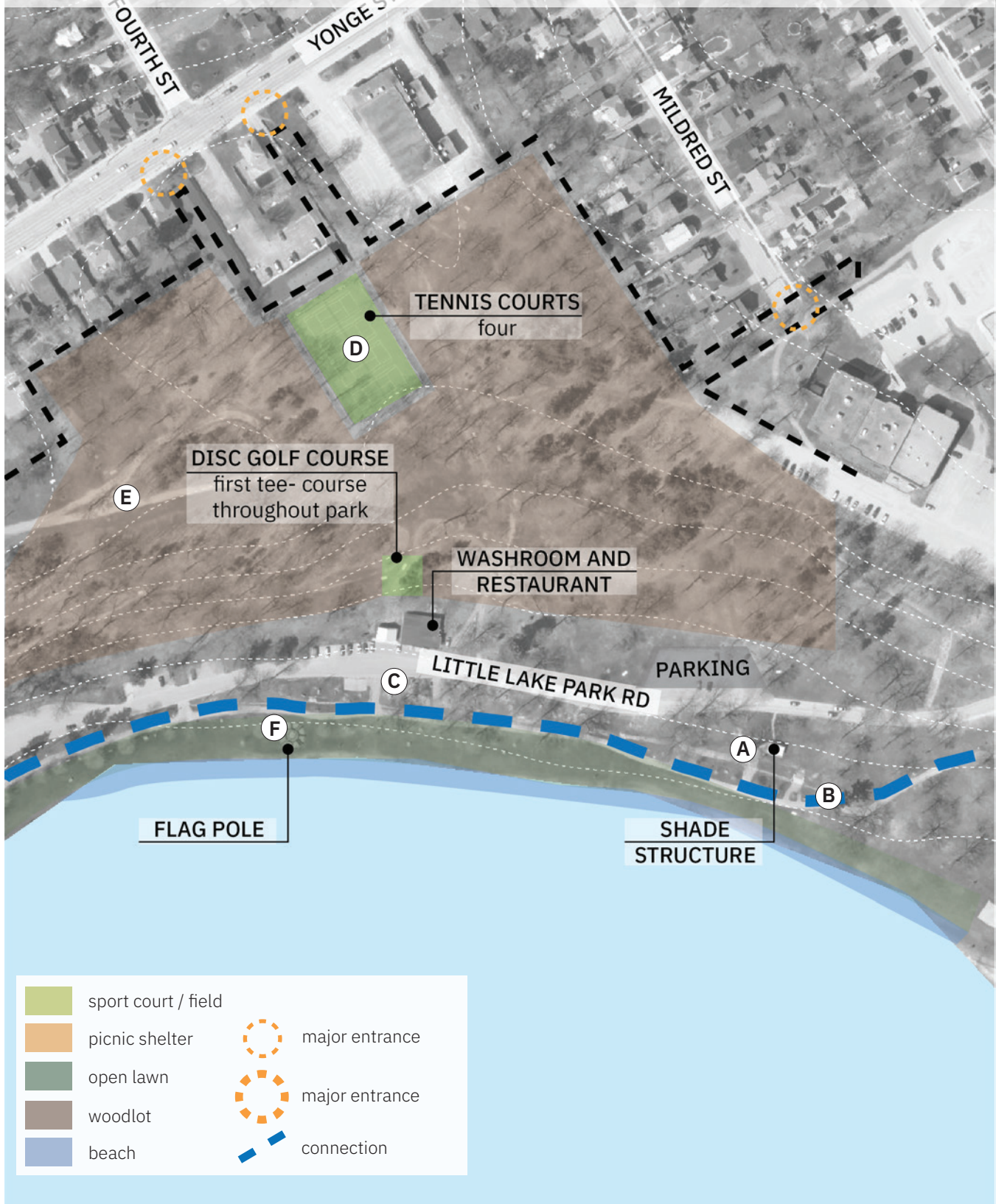


Figure AB.23: Little Lake Existing Conditions Zone B



# ANALYSIS

## context

address	617 Yonge St
size	412.81 ac / 167 ha

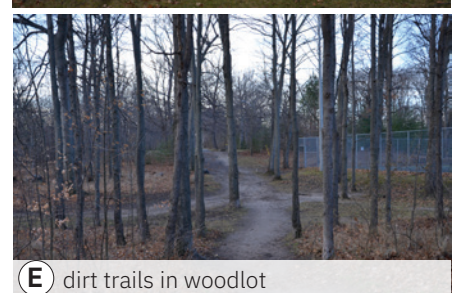
## natural features

topography	slope towards lake
hydrology	Little Lake

## amenities + condition

■ good
 ■ fair
 ■ poor

furnishing(s)	<span style="color: green;">■</span> wood/concrete benches (multiple) <span style="color: green;">■</span> picnic tables (multiple) <span style="color: yellow;">■</span> trash + recycling bins (one each)
sports field + type	<span style="color: green;">■</span> disc golf <span style="color: green;">■</span> tennis court (4)
vegetation	<span style="color: green;">■</span> woodlot <span style="color: green;">■</span> open lawn <span style="color: green;">■</span> formal garden with flag pole
pathway(s)	<span style="color: green;">■</span> asphalt multi-use pathway <span style="color: yellow;">■</span> dirt trail within woodlot
lighting	<span style="color: green;">■</span> lighting along waterfront trail
roadway	<span style="color: green;">■</span> roadway throughout the park
fence	<span style="color: yellow;">■</span> wood fence along roadway
parking	<span style="color: green;">■</span> asphalt parking for Picnic Shelter <span style="color: green;">■</span> asphalt park to the east of restaurant
structure	<span style="color: green;">■</span> washrooms/change room <span style="color: green;">■</span> restaurant <span style="color: red;">■</span> shade structure
stairs	<span style="color: green;">■</span> concrete stairs from roadway to open lawn/ waterfront trail (multiple)



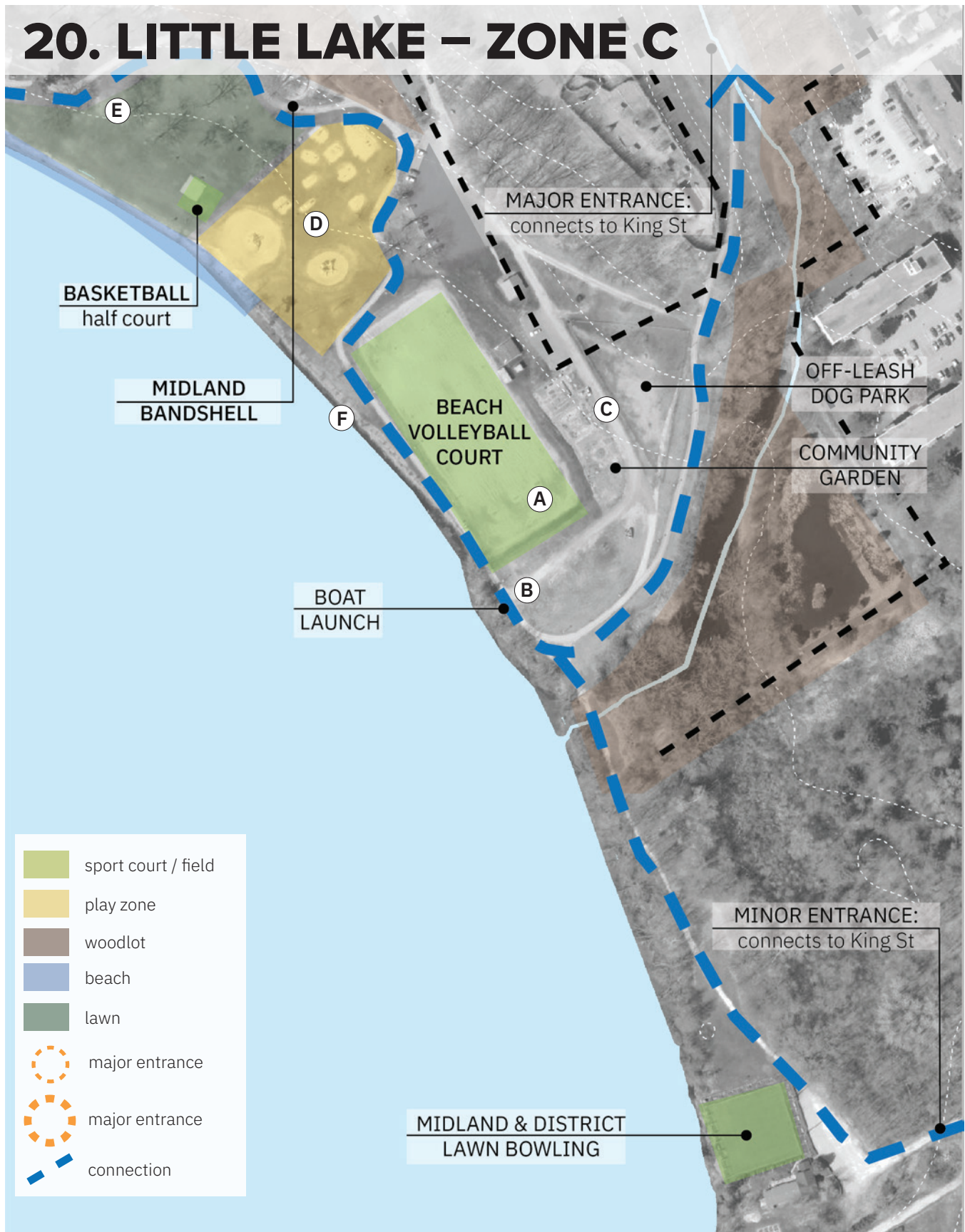


Figure AB.24: Little Lake Existing Conditions Zone C



# ANALYSIS

## context

address	617 Yonge St
size	412.81 ac / 167 ha

## natural features

topography	slope towards lake
hydrology	Little Lake

## amenities + condition

■ good
 ■ fair
 ■ poor

play structure(s)	<span style="color: yellow;">■</span> junior play- 1 slide <span style="color: yellow;">■</span> senior play- 2 slide <span style="color: yellow;">■</span> large slide <span style="color: yellow;">■</span> spring toys (4) <span style="color: yellow;">■</span> teeter totter (4) <span style="color: yellow;">■</span> donut swing (2) <span style="color: yellow;">■</span> climber (bars)- 4 <span style="color: yellow;">■</span> four bay swingset
play surfacing	<span style="color: red;">■</span> sand- inadequate safety zone
furnishing(s)	<span style="color: yellow;">■</span> wood bleachers at volleyball court <span style="color: green;">■</span> wood/concrete benches <span style="color: green;">■</span> wood/metal benches
sports field + type	<span style="color: green;">■</span> beach volleyball (12) <span style="color: yellow;">■</span> half court basketball (1)
vegetation	<span style="color: green;">■</span> Midland Community Garden <span style="color: green;">■</span> woodlot
pathway(s)	<span style="color: green;">■</span> asphalt multi-use pathway
lighting	<span style="color: green;">■</span> lighting along waterfront trail
roadway	<span style="color: green;">■</span> roadway throughout the park
fence	<span style="color: green;">■</span> chain link fence enclosing dog park
parking	<span style="color: green;">■</span> granular parking between volleyball and play equipment
structure	<span style="color: yellow;">■</span> pavilion <span style="color: green;">■</span> Midland Rotary Club bandshell <span style="color: green;">■</span> washroom/changeroom adjacent to volleyball
water access	<span style="color: green;">■</span> boat launch (small craft- under 10hp) <span style="color: green;">■</span> sand beach- no lifeguard



**A** beach volleyball



**B** small craft launch



**C** community garden and dog park



**D** play equipment



**E** bandshell



**F** beach area

# 21. TOWN DOCK

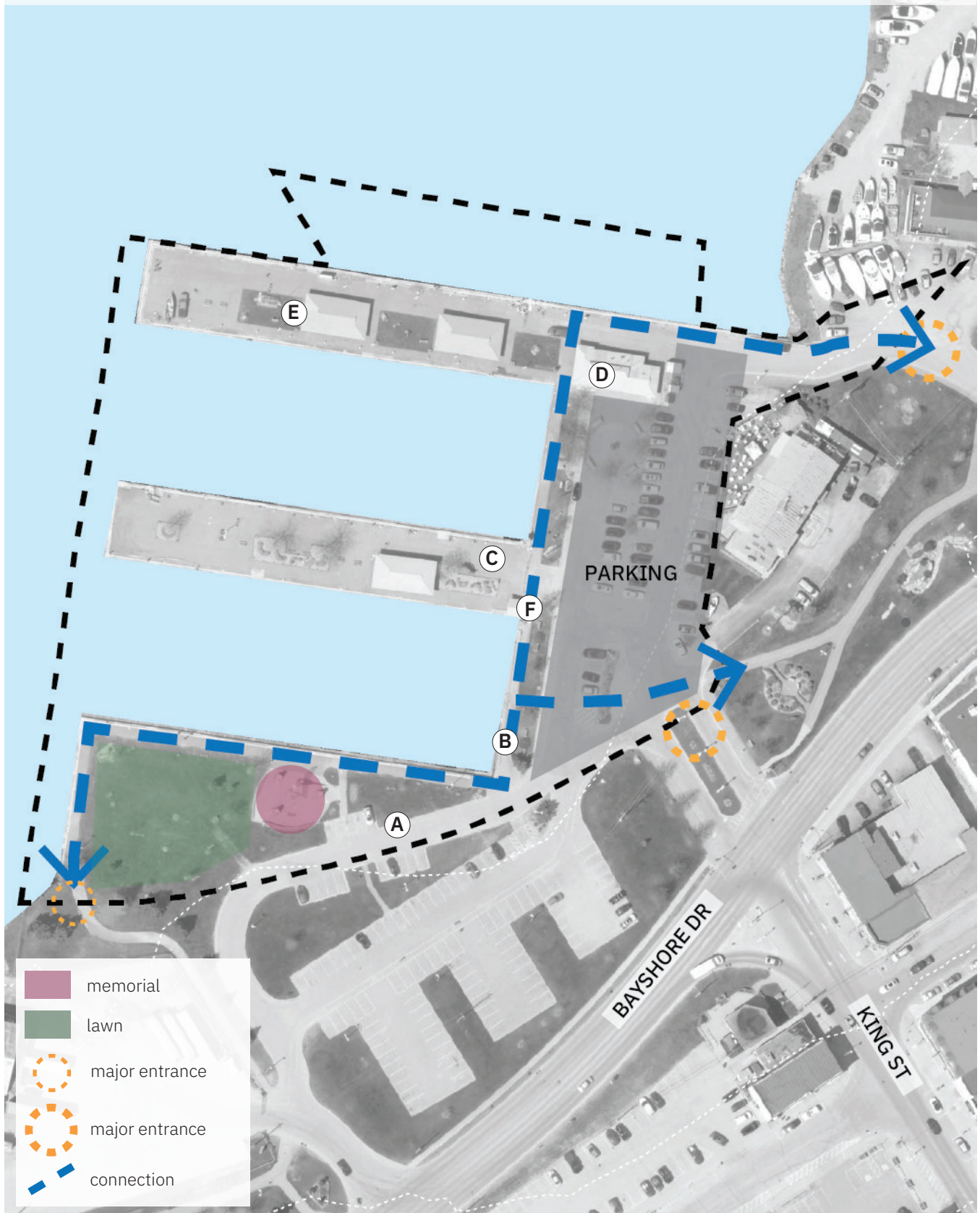


Figure AB.25: Town Dock Existing Conditions



# ANALYSIS

## context

address	165 King St
size	7.55 ac / 3.1 ha

## natural features

topography	flat
hydrology	Midland Bay

## amenities + condition

■ good
 ■ fair
 ■ poor

furnishing(s)	<span style="color: green;">■</span> park sign <span style="color: yellow;">■</span> picnic table <span style="color: yellow;">■</span> benches <span style="color: green;">■</span> interpretive signage <span style="color: yellow;">■</span> bike rack
lighting	<span style="color: yellow;">■</span> lighting along each pier <span style="color: yellow;">■</span> lighting in parking areas <span style="color: yellow;">■</span> underneath shade structure
vegetation	<span style="color: yellow;">■</span> deciduous trees and grasses in planters on piers <span style="color: green;">■</span> small planters on pier <span style="color: green;">■</span> deciduous trees in parking lot <span style="color: green;">■</span> display gardens <span style="color: green;">■</span> small open lawn on piers
pathway(s)	<span style="color: yellow;">■</span> unit paving around piers <span style="color: yellow;">■</span> asphalt on piers
sculpture	<span style="color: green;">■</span> Swan sculpture on south side of docks
structure(s)	<span style="color: green;">■</span> Harbour Administration building <span style="color: yellow;">■</span> ticket booth <span style="color: yellow;">■</span> 3 shade structures
memorial	<span style="color: green;">■</span> 3 concrete monuments
parking	<span style="color: green;">■</span> asphalt lot



## 22. PETE PETTERSEN PARK



Figure AB.26: Pete Pettersen Park Existing Conditions



# ANALYSIS

## context

address	159 Marina Park Ave
size	32.1 ac / 13 ha

## natural features

topography	mostly flat
hydrology	Midland Bay

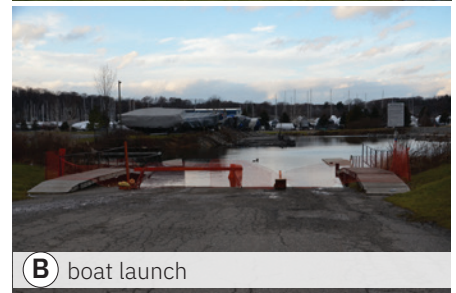
## amenities + condition

■ good
 ■ fair
 ■ poor

play structure(s)	<span style="color: yellow;">■</span> teeter totter (2) <span style="color: yellow;">■</span> accessible senior climber- 2 slides / monkey bars <span style="color: yellow;">■</span> double bay swingset
play surfacing	<span style="color: red;">■</span> sand- inadequate safety zone
furnishing(s)	<span style="color: green;">■</span> park sign <span style="color: green;">■</span> bleachers (2) baseball diamond <span style="color: yellow;">■</span> picnic table (3) <span style="color: yellow;">■</span> wood/metal benches (4)
sports field + type	<span style="color: green;">■</span> baseball diamond
lighting	<span style="color: green;">■</span> lighting about baseball diamond <span style="color: yellow;">■</span> lighting along waterfront trail
structure(s)	<span style="color: green;">■</span> washroom/change room <span style="color: green;">■</span> 3 old piers <span style="color: green;">■</span> storage shed (play) <span style="color: green;">■</span> storage shed (baseball)
water access	<span style="color: green;">■</span> boat launch <span style="color: green;">■</span> sandy beach- no lifeguard
vegetation	<span style="color: green;">■</span> woodlot <span style="color: green;">■</span> open lawn adjacent to beach
pathway(s)	<span style="color: yellow;">■</span> multi-use asphalt pathway
fence	<span style="color: green;">■</span> chain link fence enclosing baseball diamond
parking	<span style="color: green;">■</span> large granular lot



**A** baseball diamond



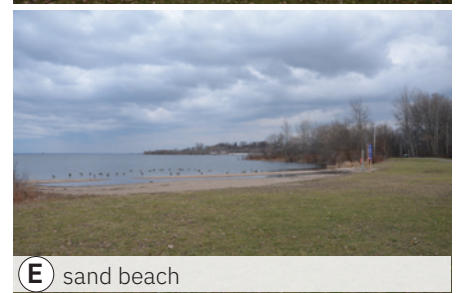
**B** boat launch



**C** play equipment



**D** play equipment



**E** sand beach



**F** multi-use asphalt trail with old pier

## 23. MCCULLOUGH PARK

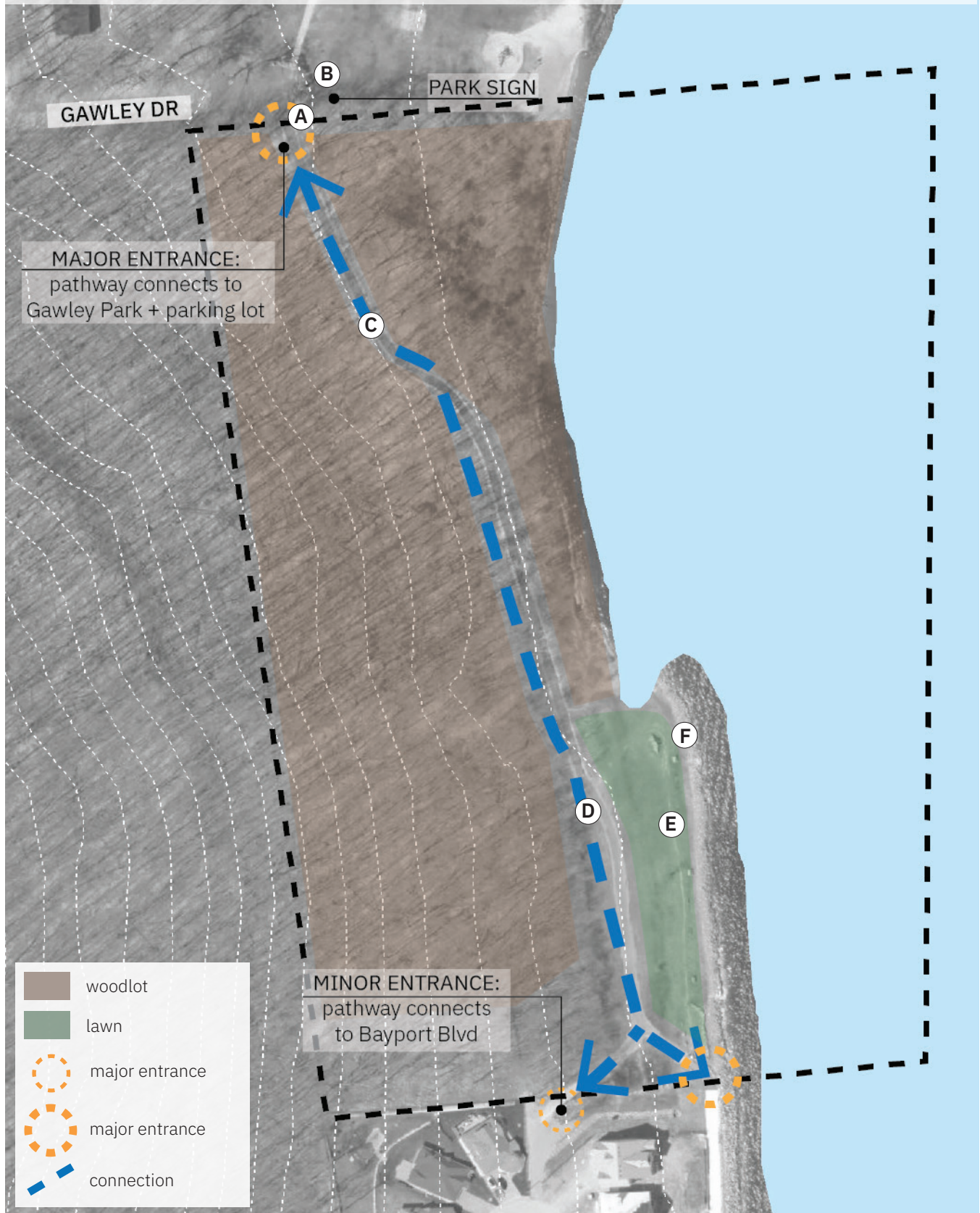


Figure AB.27: McCullough Park Existing Conditions



# ANALYSIS

## context

address	821 Gawley Dr
size	20 ac / 8.1 ha

## natural features

topography	mostly flat
hydrology	Midland Bay

## amenities + condition

■ *good*
■ *fair*
■ *poor*

furnishing(s)	<span style="color: green;">■</span> park sign <span style="color: green;">■</span> picnic tables <span style="color: green;">■</span> wood/concrete benches <span style="color: green;">■</span> wood/metal benches
vegetation	<span style="color: green;">■</span> woodlot with boulders <span style="color: yellow;">■</span> open lawn
water access	<span style="color: green;">■</span> rocky shore
pathway(s)	<span style="color: green;">■</span> multi-use asphalt pathway through woodlot from Gawley Dr to Bayport Blvd



**A** entrance at Gawley Dr



**B** park sign



**C** multi-use trail



**D** pathway to Bayport Blvd



**E** lawn area



**F** rocky shore



## 24. GAWLEY PARK

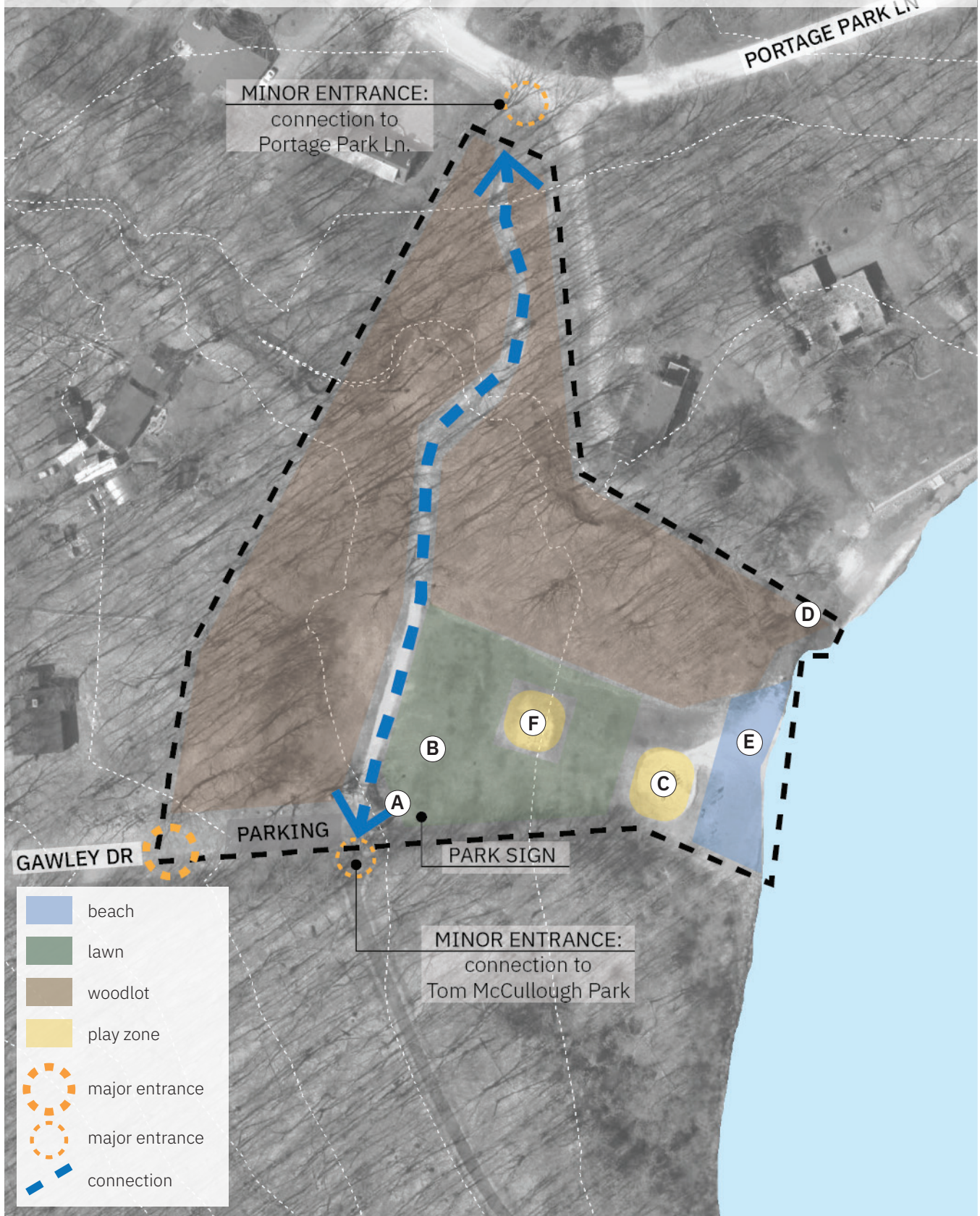


Figure AB.28: Gawley Park Existing Conditions



# ANALYSIS

## context

address	820 Gawley Dr
size	3.78 ac / 1.53 ha

## natural features

topography	mostly flat
hydrology	swale/ditch along S dirt road

## amenities + condition

■ good
 ■ fair
 ■ poor

play structure(s)	<span style="color: yellow;">■</span> double bay swing set <span style="color: yellow;">■</span> junior play- 2 slides
play surfacing	<span style="color: red;">■</span> sand- no curb, inadequate safety zone
furnishing(s)	<span style="color: green;">■</span> trash can <span style="color: yellow;">■</span> concrete/wood bench <span style="color: green;">■</span> park sign
vegetation	<span style="color: green;">■</span> dune grasses <span style="color: green;">■</span> woodlot <span style="color: green;">■</span> open lawn <span style="color: green;">■</span> ornamental planting at park sign
water access	<span style="color: green;">■</span> small sandy beach
pathway(s)	<span style="color: green;">■</span> limestone screening
parking	<span style="color: green;">■</span> small parking area



**A** park sign



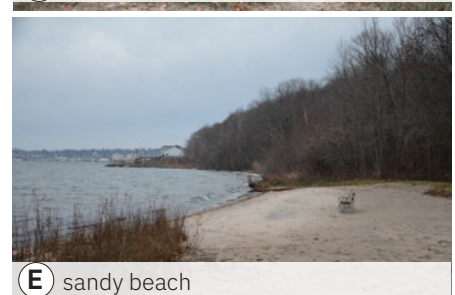
**B** open lawn



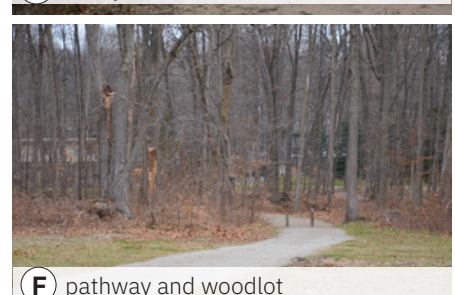
**C** junior play structure



**D** dunes



**E** sandy beach



**F** pathway and woodlot

## 25. GLENBROOK GARDENS

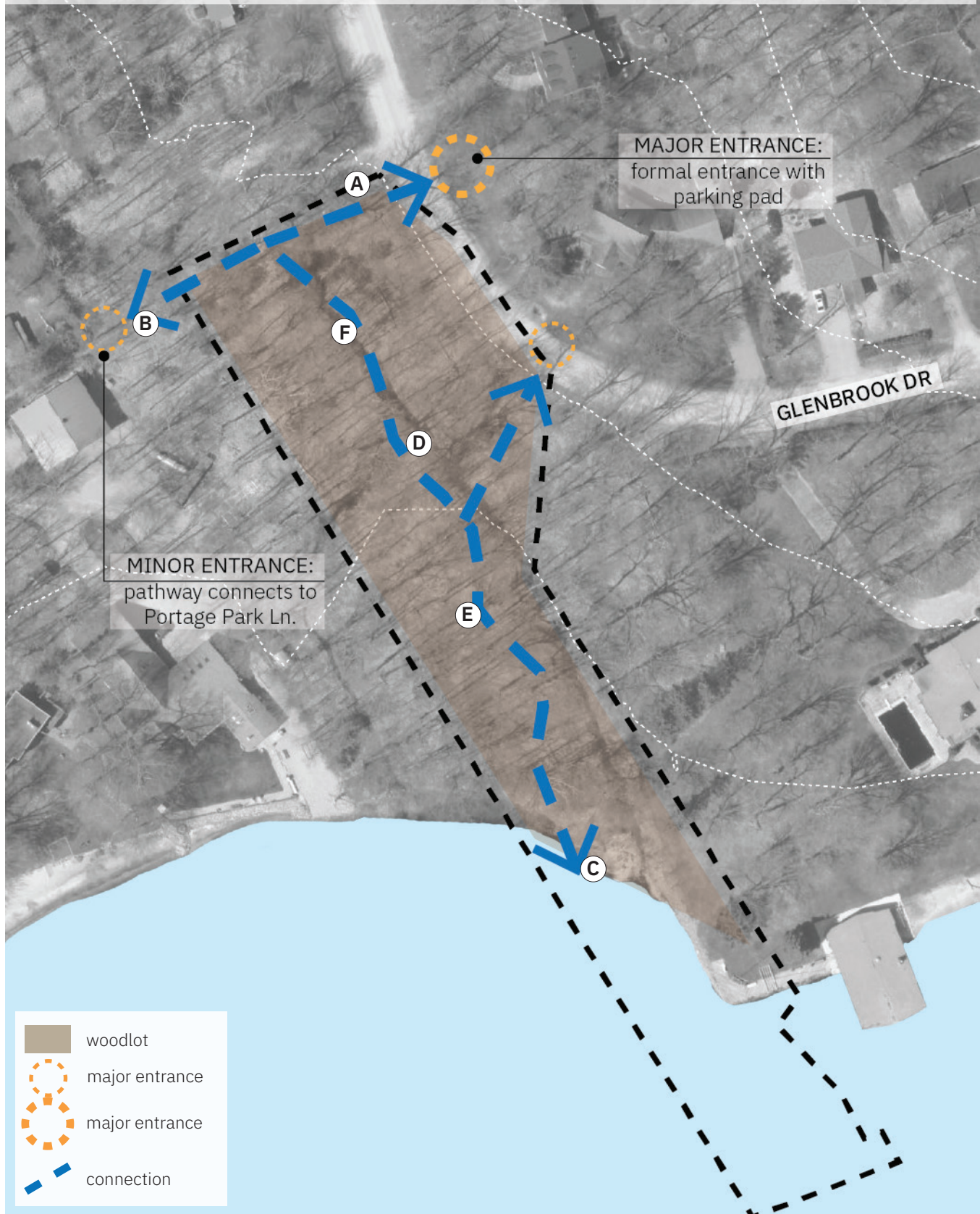


Figure AB.29: Glenbrook Gardens Existing Conditions



# ANALYSIS

## context

address	87 Sixth St
size	1.66 ac / 0.67 ha

## natural features

topography	gentle slope towards the bay
hydrology	creek flowing to the bay

## amenities + condition

■ good
 ■ fair
 ■ poor

furnishing(s)	<span style="color: red;">■</span> wood bench at water <span style="color: red;">■</span> wood bridge over creek <span style="color: green;">■</span> park sign
vegetation	<span style="color: green;">■</span> woodlot <span style="color: green;">■</span> understory plants
water access	<span style="color: green;">■</span> sandy shore- no beach
pathway(s)	<span style="color: yellow;">■</span> limestone screening and natural surface
parking	<span style="color: green;">■</span> small parking pad



**A** park sign



**B** minor entrance



**C** lookout



**D** bridge over creek



**E** woodlot pathway



**F** creek



## 26. SUNRISE PARK

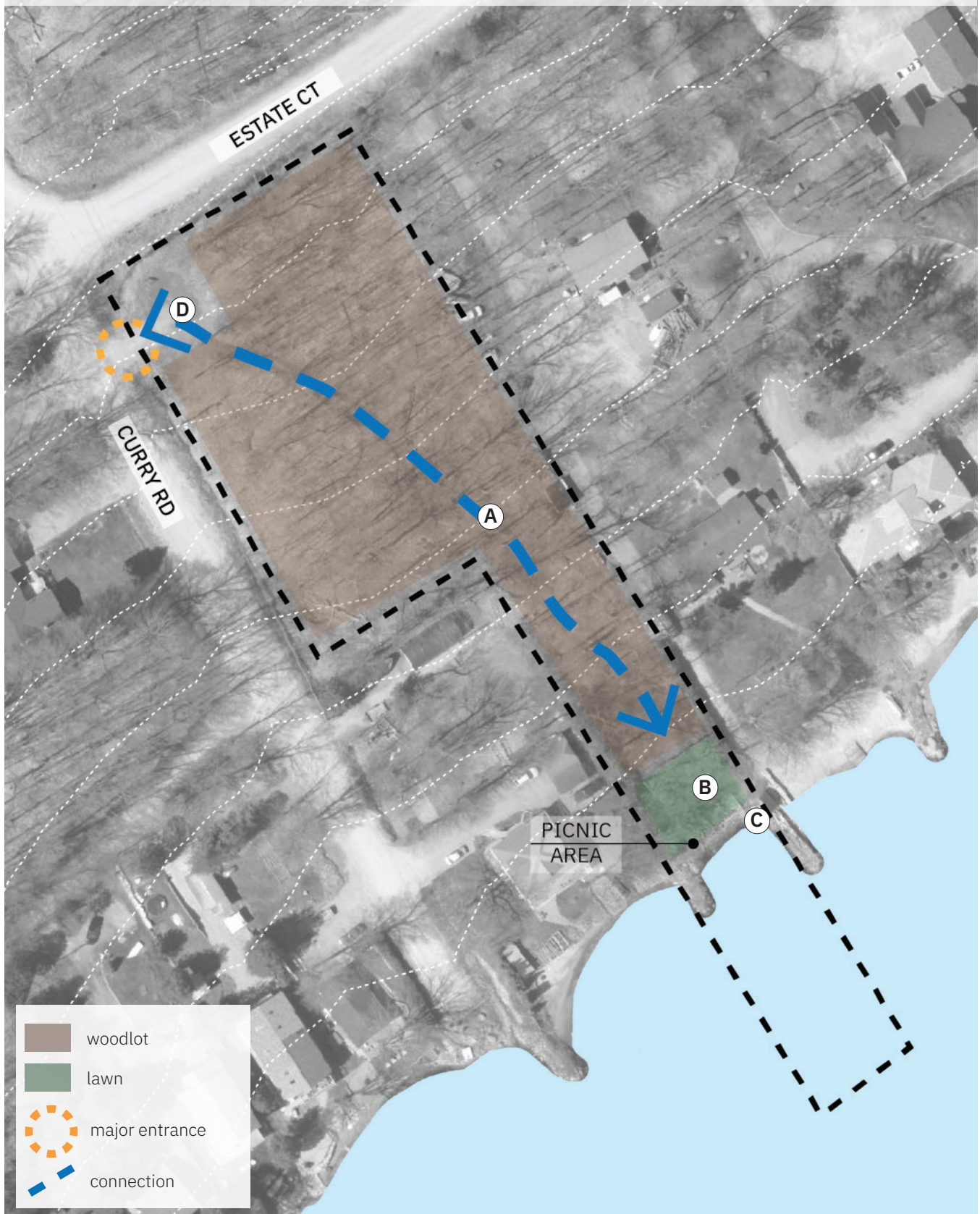


Figure AB.30: Sunrise Park Existing Conditions



# ANALYSIS

## context

address	347 Estate Cres
size	1.72 ac / 0.7 ha

## natural features

topography	slope towards water
hydrology	Midland Bay

## amenities + condition

■ *good*
■ *fair*
■ *poor*

furnishing(s)	<span style="color: yellow;">■</span> picnic table <span style="color: green;">■</span> park sign
stair	<span style="color: green;">■</span> wood dock and stairs down to water
vegetation	<span style="color: green;">■</span> woodlot <span style="color: green;">■</span> open lawn at water <span style="color: green;">■</span> buffer planting edges of open lawn
pathway(s)	<span style="color: yellow;">■</span> natural surface through woodlot
water access	<span style="color: green;">■</span> steps into water- sandy shore
parking	<span style="color: green;">■</span> granular parking pad

