

Notice of Completion

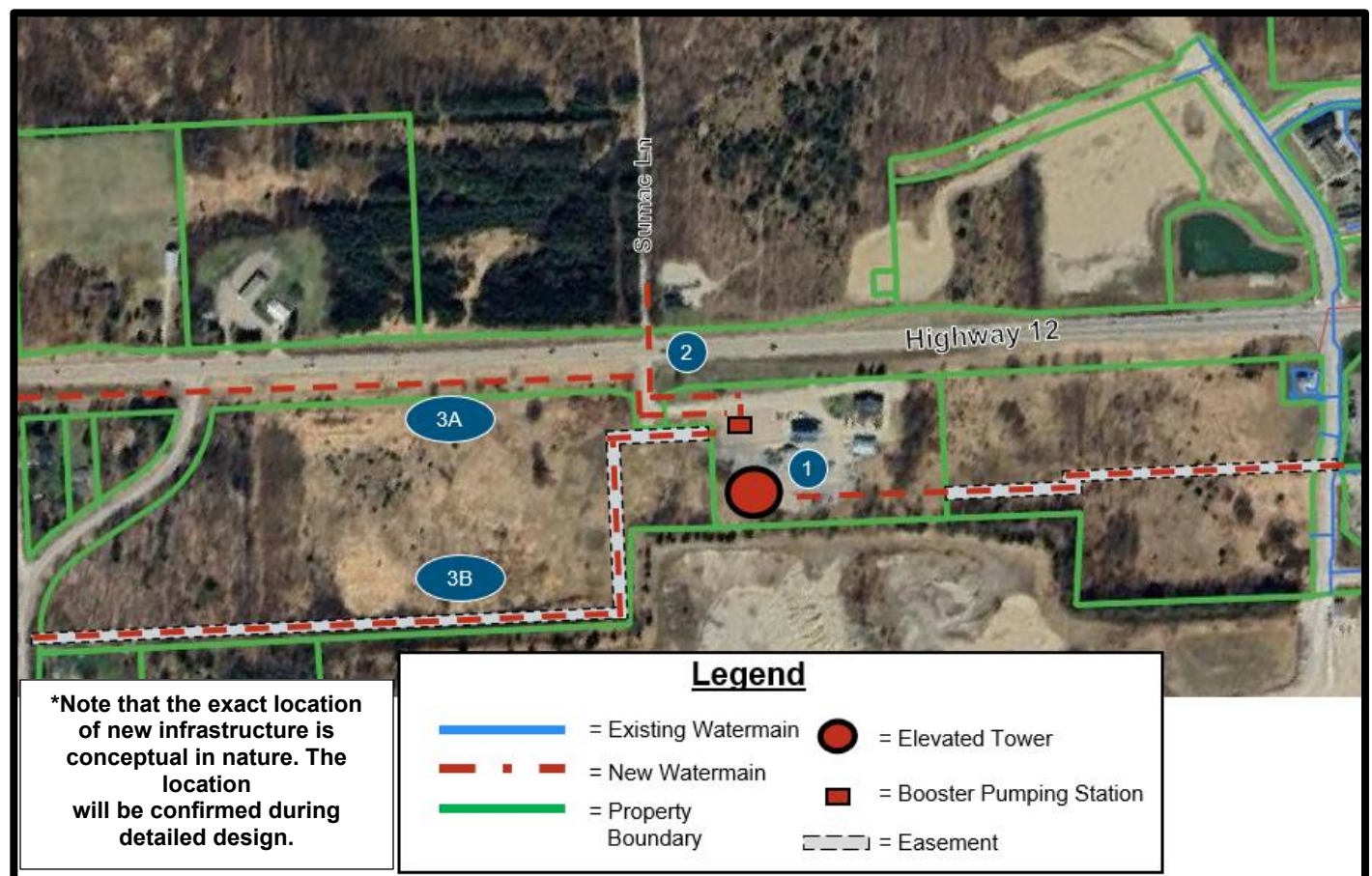
Town of Midland

Midland East Pressure Zone

Municipal Class Environmental Assessment

The Town of Midland (the Town) has completed a Municipal Class Environmental Assessment (Class EA) for the Eastern Pressure Zones. The purpose of the study is to address short and long-term water infrastructure needs for the Town's southern development areas, which is supplied by the East Pressure Zone. The Class EA assessed various options to ensure the preferred solution can service existing and future development within Midland.

The study included input from Indigenous and technical stakeholders and the public. The preferred servicing solution for the Town identified through this Class EA is to build a new Elevated Tower and Booster Pumping Station at the selected site south of Highway 12 and west of Beamish Road. The new watermain supplying the new Elevated Tower will connect to existing infrastructure along Beamish Road through an easement on the property east of the site. The new Booster Pumping Station will supply water via a new watermain crossing Highway 12 to the north, as well as a new watermain extending west toward Brebeuf Road to service the southern development areas.



Further details are presented in the Project File Report, which is currently available for review at the Town's website: <https://www.midland.ca/en/living-in-midland/east-pressure-zone.aspx>

By this notice, the Class EA is being placed on public record for a 30-day review period in accordance with the requirements of the Municipal Class EA process. Interested persons may provide written comments to the project team by **June 15, 2025**.

All comments and concerns should be sent directly to:

Jane Wilson, M.Sc., P.Eng.
Director of Municipal Infrastructure and Planning
J.L. Richards & Associates Limited
107-450 Speedvale Ave. W.
Guelph, ON N1H 7Y6
T: 226-780-7487 E: jwilson@jlrichards.ca

Bailee Yasher, C.E.T.
Senior Project Manager
Town of Midland
575 Dominion Ave.
Midland, ON L4R 1R2
T: 705-526-4275 ext. 2207 E: byasher@midland.ca

This study is being conducted according to the requirements of a Schedule 'B' Class Environmental Assessment under the Ontario Municipal Class Environmental Assessment process (October 2000, amended in 2015, 2023, and 2024).

In addition, a request to the Ministry of the Environment, Conservation, and Parks for an order imposing additional conditions or requiring an individual environmental assessment be made on the grounds that the requested order may prevent, mitigate, or remedy adverse impacts on constitutionally protected Aboriginal and treaty rights. Requests should include your full name and contact information. Requests should specify what kind of order is being requested (additional conditions or an individual environmental assessment), explain how an order may prevent, mitigate, or remedy potential adverse impacts, and include any supporting information. The requests should be sent in writing or by email to:

Minister of the Environment, Conservation and Parks
Ministry of the Environment, Conservation and Parks
777 Bay Street, 5th Floor
Toronto, ON M7A 2J3
minister.mecp@ontario.ca

Director, Environmental Assessment Branch
Ministry of the Environment, Conservation and Parks
135 St. Clair Ave. W, 1st Floor
Toronto, ON M4V 1P5
EABDirector@ontario.ca

All personal information collected during the process – such as name, address, telephone number, and property location – is collected under the authority of Section 30 of the Environmental Assessment Act and maintained for the purpose of creating a record that is available to the general public. As this information is collected for a public record, the protection of personal information provided in the Freedom of Information and Protection of Privacy Act (FIPPA) does not apply (s.37). Personal information submitted will become part of a public record unless you request that your personal information remain confidential. For more information, please contact the ministry's Freedom of Information and Privacy Coordinator at 416-327-1434.

If there is no request received by **June 15, 2025**, the Environmental Assessment is deemed complete. The Town may then proceed with implementing the recommendations.