

EX. OVER ALL OF BUILDING ELEV. 11(±) m

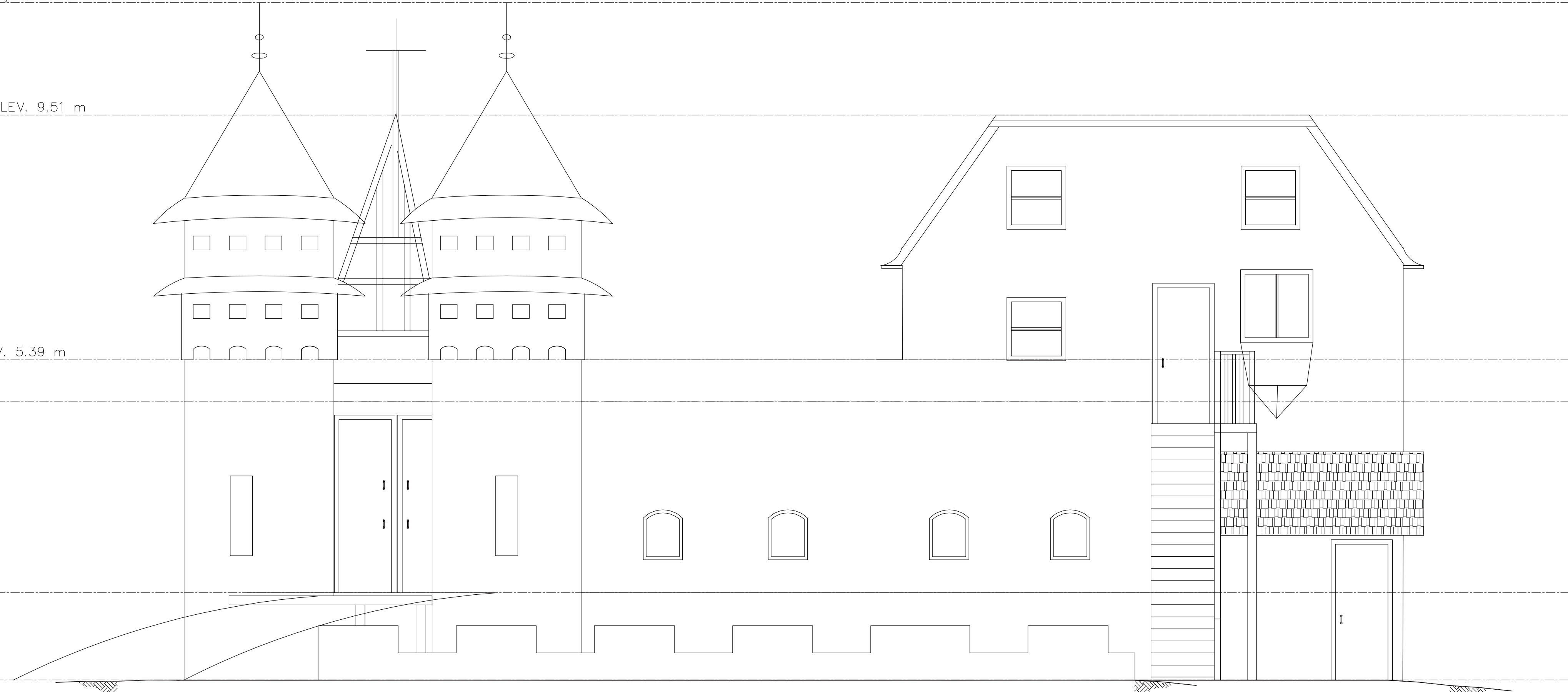
EX. TOP OF BACK PARTIAL BUILDING ELEV. 9.51 m

EX. TOP OF ROOF PARAPET WALL ELEV. 5.39 m

EX. TOP OF ROOF ELEV. 4.69 m

EX. MAIN FLOOR ELEV. 1.47 m

EX. GRADING ELEV. 0.00 m



WEST ELEVATION  
SCALE: 1/4" = 1'-0"

EX. OVER ALL OF BUILDING ELEV. 11(±) m

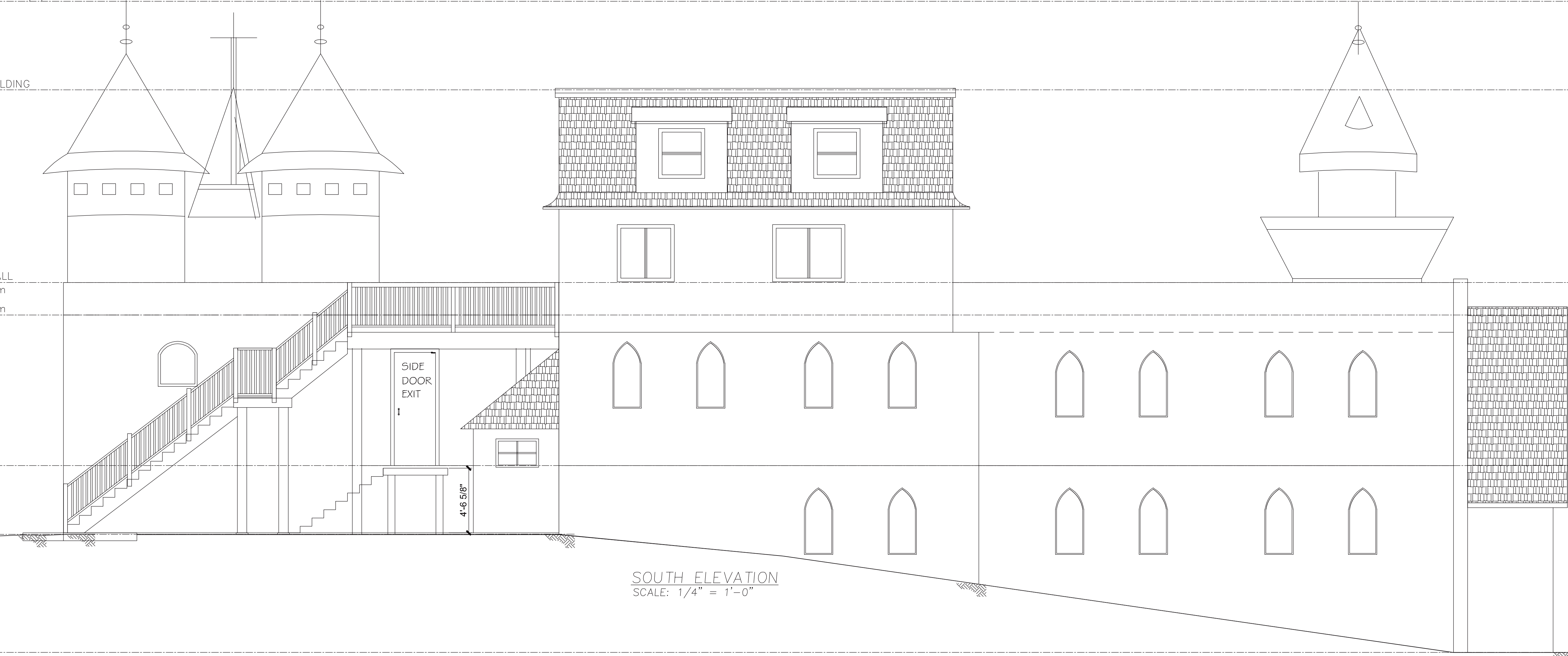
EX. TOP OF BACK PARTIAL BUILDING  
ELEV. 9.51 m

EX. TOP OF ROOF PARAPET WALL  
ELEV. 5.39 m

EX. TOP OF ROOF ELEV. 4.69 m

EX. MAIN FLOOR ELEV. 1.47 m

EX. GRADING ELEV. 0.00 m



SOUTH ELEVATION  
SCALE: 1/4" = 1'-0"

EX. BASEMENT ELEV. -2.53 m

COPYRIGHT RESERVED  
This Plan and Design are the exclusive property of DGZ Engineering Inc. and cannot be used or reproduced without the written consent of DGZ Engineering Inc. This office must be notified of any violations from the information illustrated on these drawings. The details on this page are intended to be a generic representation of the cut section. Any reinforcing depicted on them does not necessarily match that specified in the schedules. The contractor is responsible to use these details as a guide and follow the requirements indicated in the schedules.

CONTRACTOR OBLIGATION

This drawing is a portion of a complete project and shall be read in conjunction with all other drawings, specifications and tender documents related to the project, regardless of origin.



SEAL:



March 3rd 2026

REV	DATE	DESCRIPTION	ISSUED FOR REVIEW	CH	BY
A	01MAR26				

APPROVED	DZ
DATE	FEBRUARY/2025
DESIGN	DZ
DRAWN	CH
CHECKED	DZ
SCALE	AS NOTED

CONTENTS:	
701 BALM BEACH RD E	
MIDLAND ON.	
EXISTING ELEVATIONS 1	
SHEET	A-1.08
FILENAME	2025-03 DWG
REV.	A