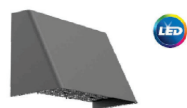




Wall Mount

GeoForm

GWM LED wall sconce



Site and Area

EcoForm

ECF-S small area light



Gardco GeoForm wedge medium LED wall sconce features a geometric wedge shape that will complement a range of architectural styles. GeoForm wedge medium features specialized, highly efficient precision plus optics which balance low glare with excellent performance. Type 2, 3 and 4 optical distributions are available. Emergency battery backup option provides path-of-egress illumination. Multiple control options, including wireless Interact Pro outdoor, further enhance energy savings. Multiple control options, including wireless Interact Pro outdoor, further enhance energy savings.

Project:
Location:
Cat.No:
Type: W1
Lamps:
City:
Notes:

Ordering guide

example: GWM-A07-840-T3M-UNV-FAWS-DG

Table with columns: Luminaire, Configuration (nom. lumens), Color Temperature, Distribution, Voltage, Dimming Controls, Electrical, Options, Finish. Rows include GWM GeoForm Wedge Medium with various configurations (A06 to A14).

- 1. Emergency Battery Pack not available.
2. Only one option can be selected from Dimming Controls column.
3. Not available in 480V.
4. Only available from 120-277V, or in UNV.
5. Only available from 120-277V, must specify voltage.
6. Failure to properly select the "BAC" suffix could result in you receiving product that is not BAA compliant product with no recourse for an RMA or refund.
7. Consult Signify to confirm whether specific accessories are BAA-compliant.

Luminaire Accessories (order separately)

- GF-WS-BK Wall Mounted Box for surface conduit, painted black
GF-INV Inversion Mounting kit (required with inverted mounting)

GWM_GeoForm_Wedge_Medium 04/24 page 1 of 5



Site and Area

EcoForm

ECF-S small area light



Gardco EcoForm Gen-2 combines economy with performance in an LED area luminaire. Capable of delivering up to 27,800 lumens or more in a compact, low profile LED luminaire, EcoForm offers a new level of customer value. EcoForm features an innovative retrofit arm kit, simplifying site conversions to LED by eliminating the need to drill additional holes in most existing poles. Integral control systems available for further energy savings. Includes Service Tag, our innovative way to provide assistance throughout the life of the product.

Project:
Location:
Cat.No:
Type: P1 & P2
Lamps:
City:
Notes:

Ordering guide

Example: ECF-S-64L-900-NW-G2-AR-5-120-HIS-MGY

Table with columns: Prefix, Number of LEDs, Drive Current, LED Color - Generation, Mounting, Distribution, Voltage. Rows include ECF-S configurations (32L, 48L, 64L LEDs).

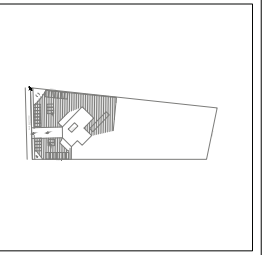
Table with columns: Dimming controls, Motion sensing lens, Photo-sensing, Options, Luminaire, Finish. Rows include various options like DD, DCC, FAW, SRDR, DynaDimmer, BL, WIAP, IMR, LB, LW, HB, HW, F1, F2, F3, HIS, SP2, BAC.

- 1. BL-IMR/3 equipped with out-boarded sensor housing when voltage is HVU (247-480V)
2. Mounts to a 4" round pole with adapter included for square poles.
3. Limited to a maximum of 45 degree aiming above horizontal.
4. Not available with other dimming control options.
5. Not available with motion sensor.
6. Not available with photocell.
7. Must specify a motion sensor lens.
8. Not available in 347 or 480V.
9. Must specify input voltage.
10. TLRD5, TLRD7 and TLRD9 receptacle pins 4 & 5 are capped off when ordered with any of the Dimming controls DD or FAWs or LCL.
11. Not available in 480V. Order photocell separately with TLRD5/7.
12. Not available with DCC.
13. Not available with SF and WS. RPs are provided with black finish standard.
14. HS not available with Type 5 SW, BLC, BLC-90, BLC-270, LCL or RCL optics.
15. Not available with DCC, FAWs, SRDR, or WIAP dimming control options.
16. WIAP must be combined with Motion sensing lens LB or LW or HB or HW.
17. When ordering SRDR, controller (by others) to be used on socket must be SR compatible (see specifications for more details). Consult factory for lead time. All Types in NEMA receptacle are connected to SR driver. SRDR not available with TLRD5 or TLRD9.
18. 0-10V dimming driver standard.
19. LCL and RCL not available with 48L-1.2A or 64L-1A.
20. Extended lead times apply. Contact factory for details.
21. Failure to properly select the "BAC" suffix could result in you receiving product that is not BAA compliant product with no recourse for an RMA or refund. This BAC designation hereunder does not address (i) the applicability of, or availability of a waiver under, the Trade Agreements Act, or (ii) the "Buy America" domestic content requirements imposed on states, localities, and other non-federal entities as a condition of receiving funds administered by the Department of Transportation or other federal agencies.

ECF-S_EcoForm_area_small 09/25 page 1 of 9

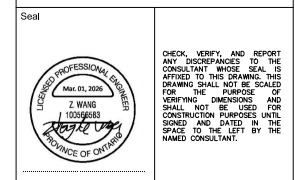


Key Plan



ISSUES/REVISIONS

Table with columns: ISSUE, TITLE, DATE. Row 1: 1. ISSUED FOR SPA Mar 01, 2026



Frontop Engineering Limited
131 Amber Street, Unit 1 & 2, Markham ON L3R 3B2
Tel: (905) 947-9900; Fax: (905) 905-9870
Website: www.frontop.ca; Email: info@frontop.ca

701 BALM BEACH RD. EAST
PHOTOMETRICS
701 BALM BEACH RD. E
MIDLAND, ON
L4R 4K4

Drawing Title
SITE PLAN
EXTERIOR WALL LIGHT
FIXTURE CUTS

Table with columns: Date, Scale, Drawn By, Checked By, Project No., Drawing No. Values: 26/01/26, AS SHOWN, L.B., Z.WANG, 2026701, E-101

1 SITE PLAN - EXTERIOR WALL LIGHT FIXTURE CUTS
SCALE: NTS

2 SITE PLAN - POLE MOUNTED LIGHT FIXTURE CUTS
SCALE: NTS

E-101