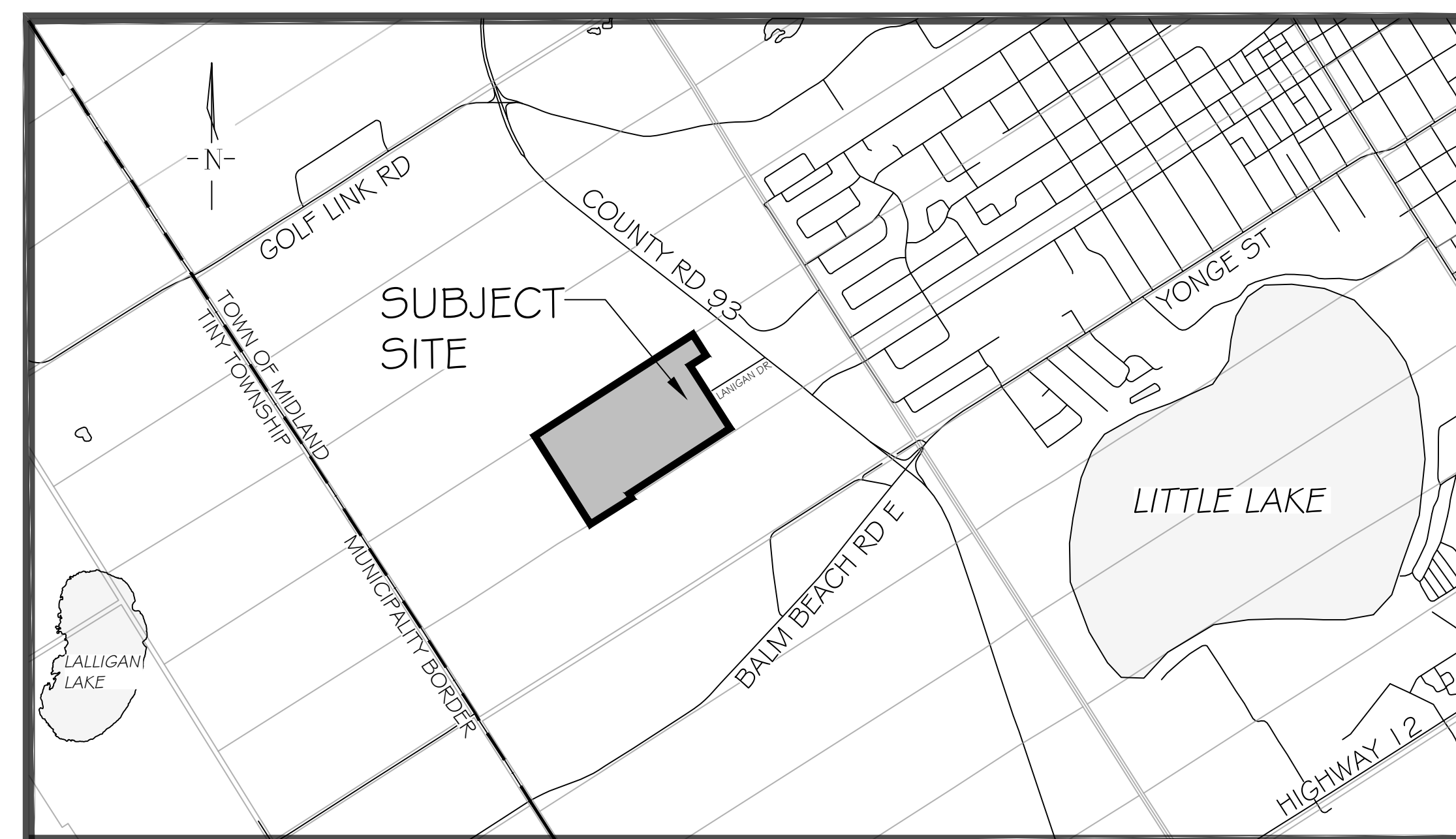


PINE VALLEY HOMES SUBDIVISION DEVELOPMENT 9332 COUNTY ROAD 93, MIDLAND ON

MUNICIPAL FILE:

LANDMARK ENVIRONMENTAL GROUP LTD.

PROJECT NO. LA 1052-25



KEY PLAN N.T.S.

DRAWING LIST:

- EX-1: EXISTING CONDITIONS
- TP-1: TREE PRESERVATION PLAN 1
- TP-2: TREE PRESERVATION PLAN 2
- LD-1: DETAILS
- BHR-1: BORE HOLE REMOVAL 1

CLIENT:

PINE VALLEY ESTATES LTD.

2444 HAINES ROAD,,
MISSISSAUGA, ON L4Y 1Y6
ATTENTION: C/O EDDIE SOARES & BRIAN DYER
OFFICE: (905) 277-5050
EMAIL: INFO@PINEVALLEYESTATESLTD.COM

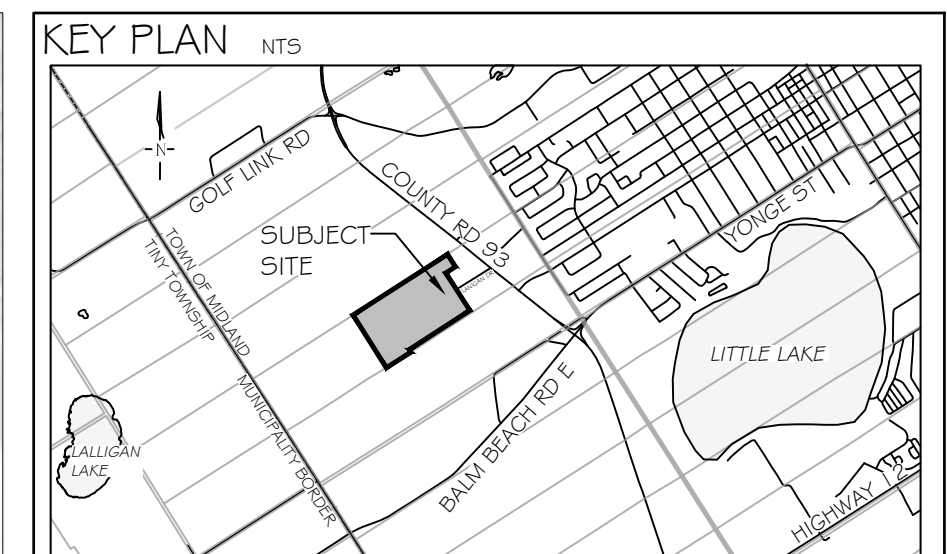
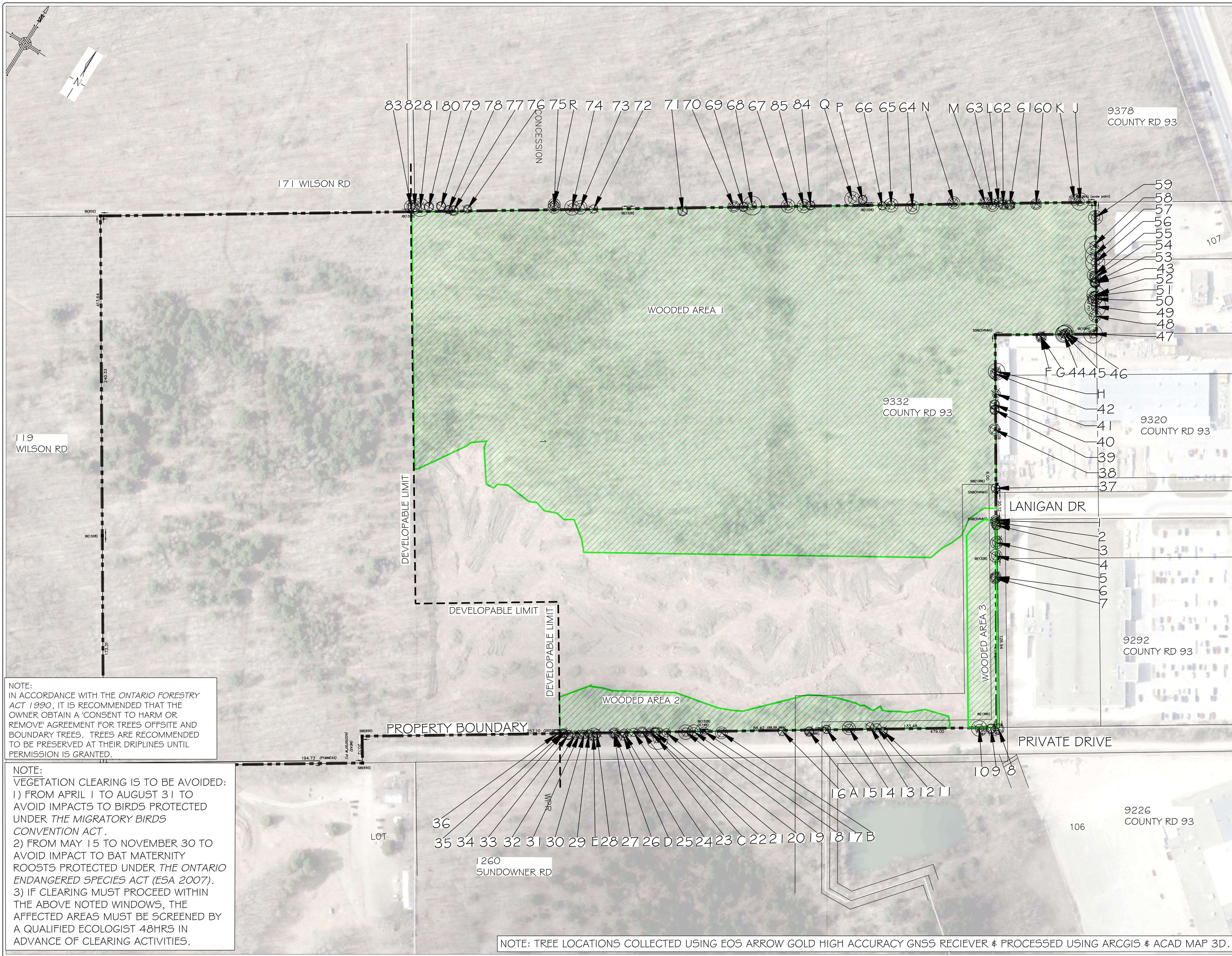
MUNICIPALITY:



TOWN OF MIDLAND
575 DOMINION AVE,
MIDLAND, ON
L4R 1R2

LANDSCAPE ARCHITECT:





GENERAL NOTES

The Client and its contractors are responsible for all utility locates and confirming all setbacks, elevations, grades, etc. prior to installation of the constructed works. The Contractor is to report any discrepancies in writing to the Landscape Architect prior to proceeding with the works to determine the impact and suitability of the proposed works. The Landscape Architect will not be responsible for any unapproved adjustments on site. Construction of the works must conform to Authority requirements and applicable codes where they have jurisdiction.

All specifications and drawings are instruments of service and are the property and ownership of the Landmark Environmental Group Ltd. As such, the drawings shall not be modified or reproduced without the expressed written consent of Landmark Environmental Group Ltd. or they will be considered void. The seal drawings are for Site Plan approval only and may require additional detailing prior to tender and construction. The Landmark Environmental Group Ltd. is not liable for errors or omissions from the use of these drawings prior to approval, seal, signature and date, and will be considered void.

It is advised that the Contractor contact the Landscape Architect prior to commencement of the construction works to ensure that the Contractor has the latest approved drawings. The Landmark Environmental Group Ltd. is not responsible for the accuracy of the base drawing information (eg Survey, Architectural, Engineering, etc). If there are any discrepancies, the Contractor will refer to the appropriate base drawing information and report discrepancies on the Landscape Drawings to the Landscape Architect.

© Copyright Landmark Environmental Group Ltd.

- LEGEND**
- PROPERTY BOUNDARY
 - - - DRAWING MATCH LINES
 - ⊕ ON-SITE TREE LOCATION WITH CANOPY
 - ⊕ OFF-SITE TREE LOCATION WITH CANOPY
 - ▨ WOODED AREA

NO	DATE	BY	REVISIONS
4	JAN 21-26	D.L	UPDATE ARBOR BASE PLANS AS NEW SITE PLAN
3	JAN 12-26	J.M	REVISED BOREHOLE ACCESS ROUTES
2	NOV 27-25	D.L	UPDATED ARBOR PLANS AS PER SURVEY PLAN
1	NOV 4-25	S.K	ISSUED FOR REVIEW

STAMP APPROVAL

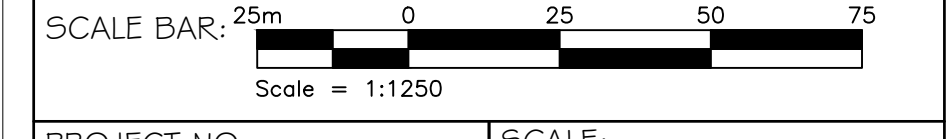
AERIAL (2024) SOURCED FROM SIMCOE COUNTY GIS
 SITE PLAN FROM JONES CONSULTING GROUP LTD.
 (2026.01.16 - 9332 COUNTY ROAD 93 - SITE PLAN.DWG) TRANS ON JAN 6, 2026
 SURVEY PLAN FROM RUDY MAK (17815.DWG) TRANS ON NOV 27, 2025

LANDMARK ENVIRONMENTAL GROUP LTD.
 LANDSCAPE ARCHITECTS & CONSULTING ARBORISTS
 OFFICE: 705-796-1122
 info@LEGroupLd.com
 www.LEGroupLd.com

CLIENT: PINE VALLEY ESTATES LTD.

PROJECT: PINE VALLEY HOMES SUBDIVISION DEVELOPMENT
 9332 COUNTY ROAD 93, MIDLAND ON

DRAWING: EXISTING CONDITIONS



PROJECT NO.: LA 1052-25 SCALE: 1:1,250

MUNICIPAL FILE NO.: DATE: NOV.04-25

DRAWN BY: S.K, D.L, J.M CHECKED BY: J.H DRAWING No.: EX-1

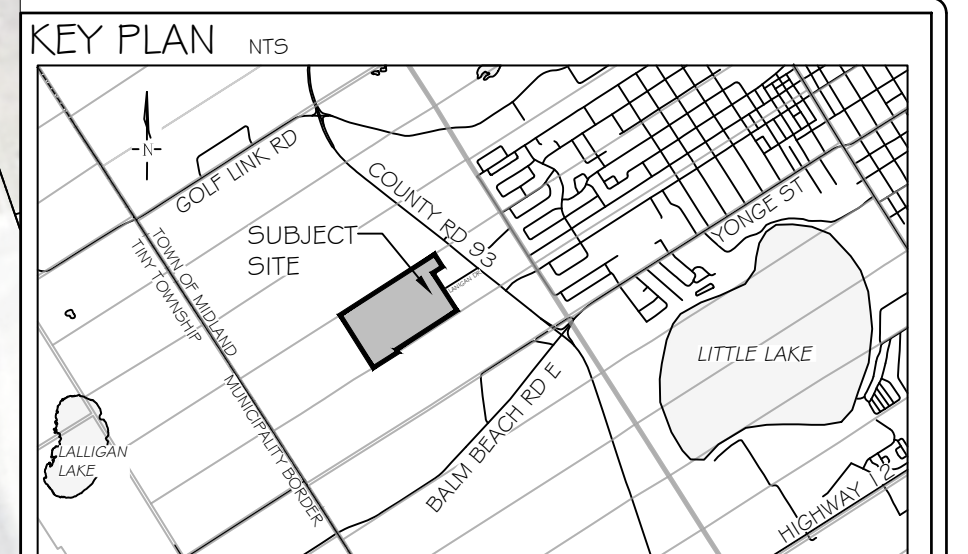
NOTE:
 IN ACCORDANCE WITH THE ONTARIO FORESTRY ACT 1990, IT IS RECOMMENDED THAT THE OWNER OBTAIN A 'CONSENT TO HARM OR REMOVE' AGREEMENT FOR TREES OFFSITE AND BOUNDARY TREES. TREES ARE RECOMMENDED TO BE PRESERVED AT THEIR DRIPLINES UNTIL PERMISSION IS GRANTED.

NOTE:
 VEGETATION CLEARING IS TO BE AVOIDED:
 1) FROM APRIL 1 TO AUGUST 31 TO AVOID IMPACTS TO BIRDS PROTECTED UNDER THE MIGRATORY BIRDS CONVENTION ACT.
 2) FROM MAY 15 TO NOVEMBER 30 TO AVOID IMPACT TO BAT MATERNITY ROOSTS PROTECTED UNDER THE ONTARIO ENDANGERED SPECIES ACT (ESA 2007).
 3) IF CLEARING MUST PROCEED WITHIN THE ABOVE NOTED WINDOWS, THE AFFECTED AREAS MUST BE SCREENED BY A QUALIFIED ECOLOGIST 48HRS IN ADVANCE OF CLEARING ACTIVITIES.

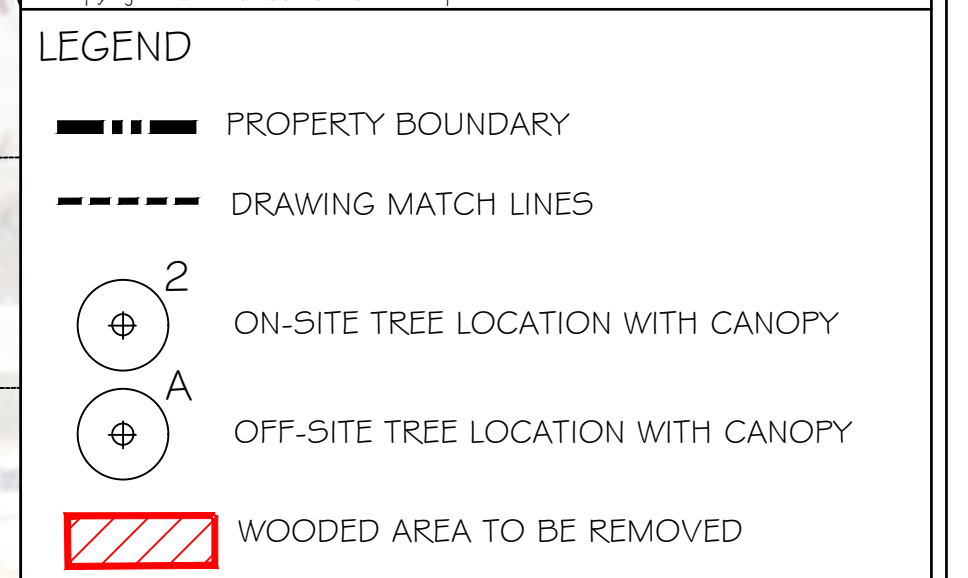
NOTE: TREE LOCATIONS COLLECTED USING EOS ARROW GOLD HIGH ACCURACY GNSS RECIEVER & PROCESSED USING ARCGIS & ACAD MAP 3D.

8382818079 78 77 76 75R 74 73 72 71 70 69 68 67 85 84 Q P 66 65 64 N M 63 L 62 61 60 K J 9378 COUNTY RD 93

171 WILSON RD



GENERAL NOTES
 The Client and its contractors are responsible for all utility locates and confirming all setbacks, elevations, grades, etc. prior to installation of the constructed works. The Contractor is to report any discrepancies in writing to the Landscape Architect prior to proceeding with the works to determine the impact and suitability of the proposed works. The Landscape Architect will not be responsible for any unapproved adjustments on site. Construction of the works must conform to Authority requirements and applicable codes where they have jurisdiction.
 All specifications and drawings are instruments of service and are the property and ownership of the Landmark Environmental Group Ltd. As such, the drawings shall not be modified or reproduced without the expressed written consent of Landmark Environmental Group Ltd. or they will be considered void. The seal drawings are for Site Plan approval only and may require additional detailing prior to tender and construction. The Landmark Environmental Group Ltd. is not liable for errors or omissions from the use of these drawings prior to approval, seal, signature and date, and will be considered void.
 It is advised that the Contractor contact the Landscape Architect prior to commencement of the construction works to ensure that the Contractor has the latest approved drawings. The Landmark Environmental Group Ltd. is not responsible for the accuracy of the base drawing information (eg Survey, Architectural, Engineering, etc.) if there are any discrepancies, the Contractor will refer to the appropriate base drawing information and report discrepancies on the Landscape Drawings to the Landscape Architect.
 © Copyright Landmark Environmental Group Ltd.



NO	DATE	BY	REVISIONS
4	JAN 21-26	D.L.	UPDATE ARBOR BASE PLANS AS NEW SITE PLAN
3	JAN 12-26	J.M.	REVISED BOREHOLE ACCESS ROUTES
2	NOV 27-25	D.L.	UPDATED ARBOR PLANS AS PER SURVEY PLAN
1	NOV 4-25	S.K.	ISSUED FOR REVIEW

STAMP APPROVAL

AERIAL (2024) SOURCED FROM SIMCOE COUNTY GIS
 SITE PLAN FROM JONES CONSULTING GROUP LTD.
 (2026.01.16 - 9332 COUNTY ROAD 93 - SITE PLAN.DWG/TRANS ON JAN 16, 2026
 SURVEY PLAN FROM RUDY MAK (17815.DWG) TRANS ON NOV 27, 2025

LANDSCAPE ARCHITECTS & CONSULTING ARBORISTS

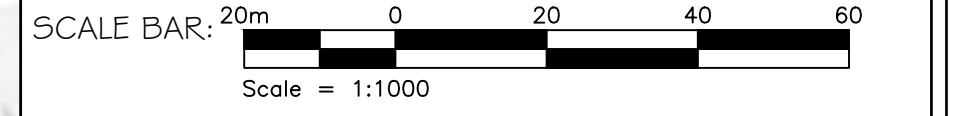
LANDMARK
 ENVIRONMENTAL GROUP LTD

OFFICE: 705-796-1122
 info@LEGroupLtd.com
 www.LEGroupLtd.com

CLIENT: PINE VALLEY ESTATES LTD.

PROJECT: PINE VALLEY HOMES SUBDIVISION DEVELOPMENT
 9332 COUNTY ROAD 93, MIDLAND ON

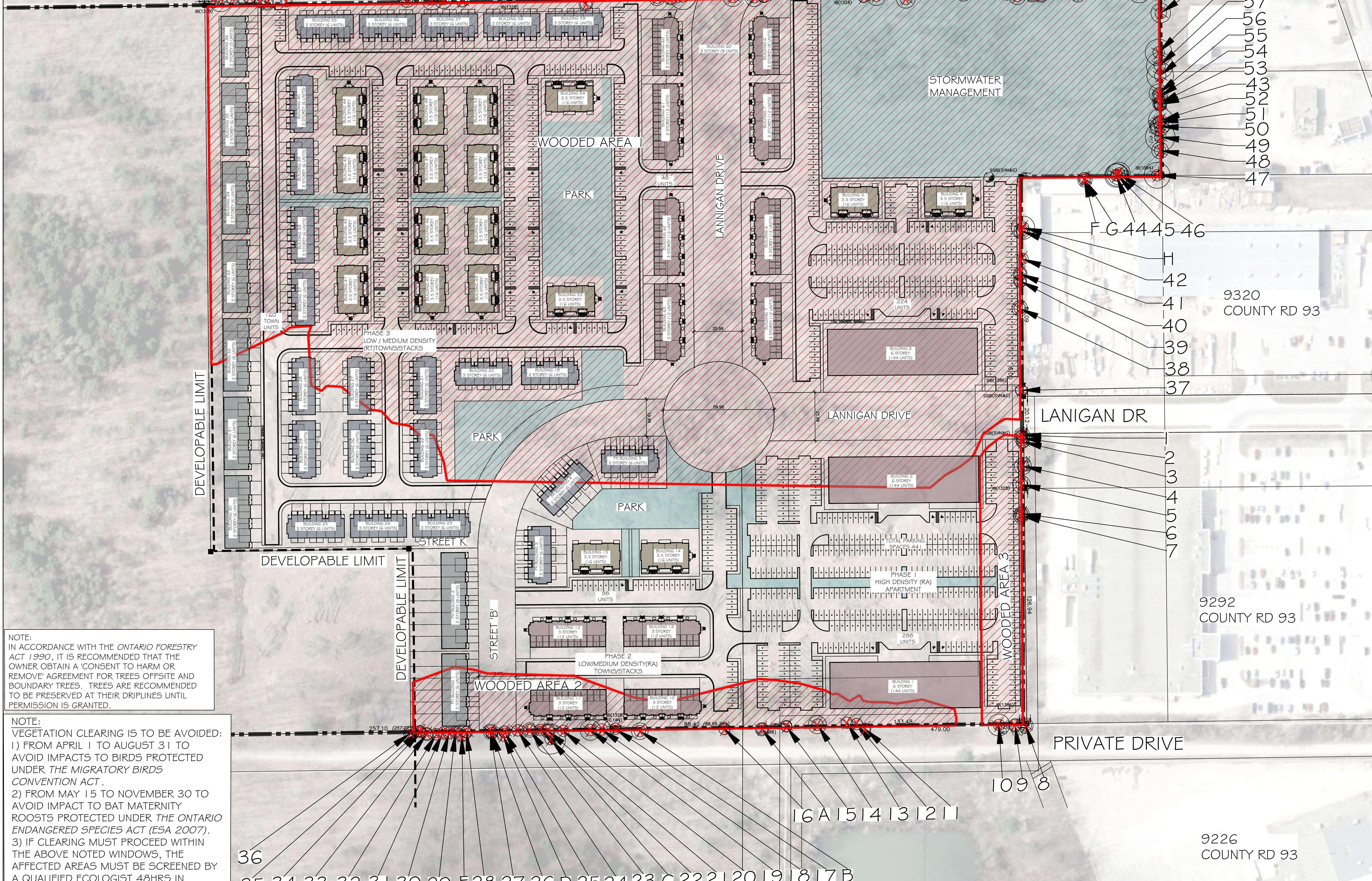
DRAWING: TREE PRESERVATION PLAN I



PROJECT NO.: LA 1052-25 SCALE: 1:1000

MUNICIPAL FILE NO.: DATE: NOV.04-25

DRAWN BY: S.K., D.L., J.M. CHECKED BY: J.H. DRAWING No.: TP-1



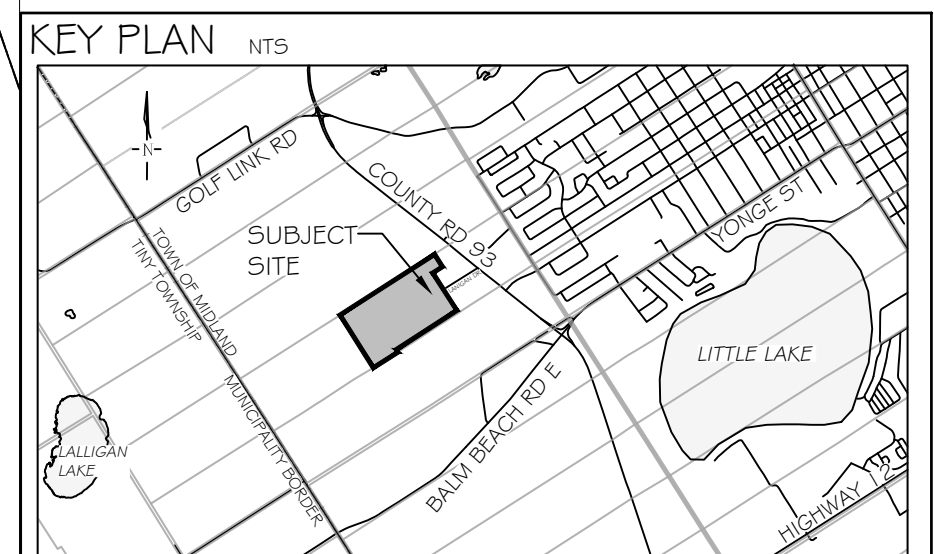
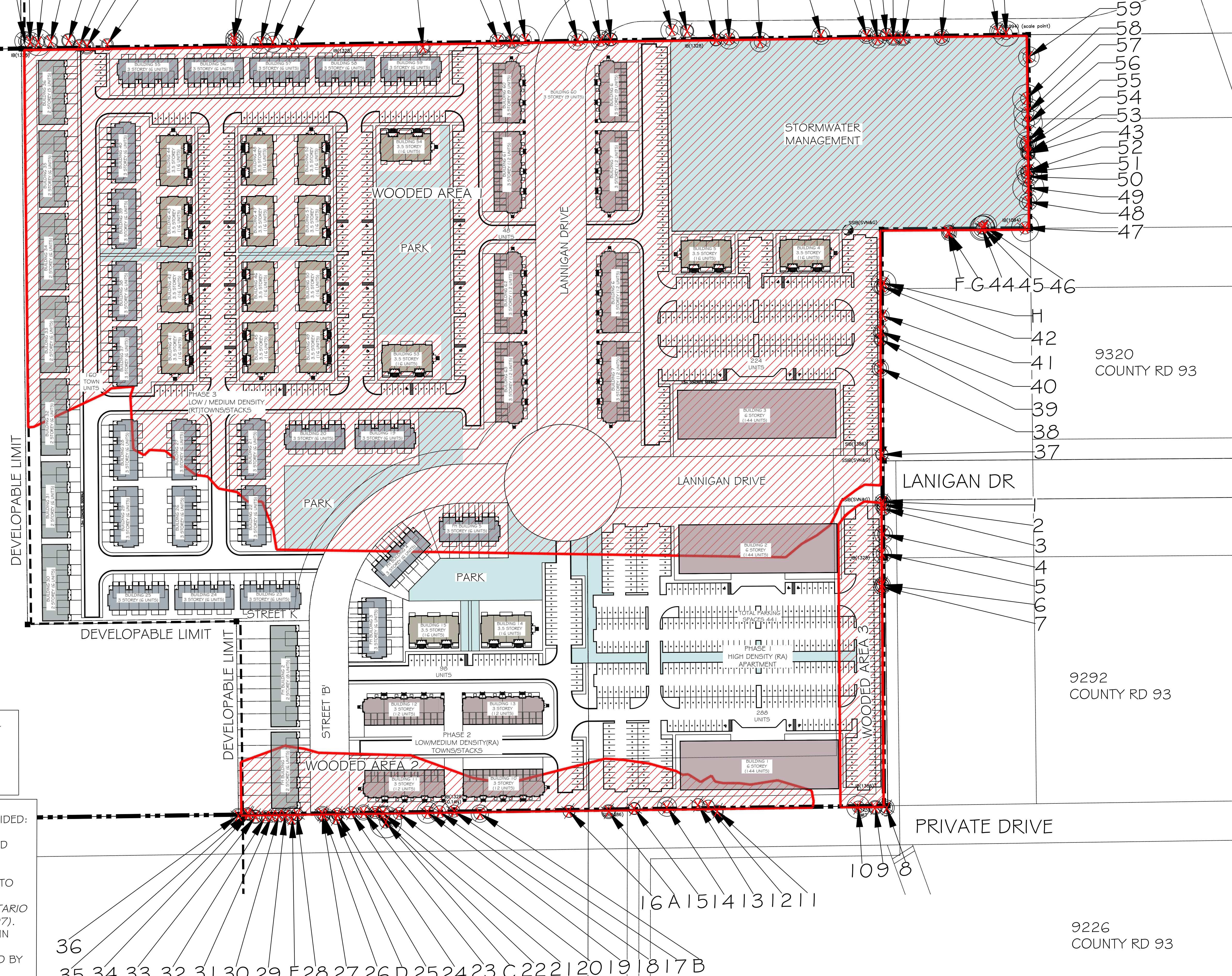
NOTE:
 IN ACCORDANCE WITH THE ONTARIO FORESTRY ACT 1990, IT IS RECOMMENDED THAT THE OWNER OBTAIN A 'CONSENT TO HARM OR REMOVE' AGREEMENT FOR TREES OFFSITE AND BOUNDARY TREES. TREES ARE RECOMMENDED TO BE PRESERVED AT THEIR DRIPLINES UNTIL PERMISSION IS GRANTED.

NOTE:
 VEGETATION CLEARING IS TO BE AVOIDED:
 1) FROM APRIL 1 TO AUGUST 31 TO AVOID IMPACTS TO BIRDS PROTECTED UNDER THE MIGRATORY BIRDS CONVENTION ACT.
 2) FROM MAY 15 TO NOVEMBER 30 TO AVOID IMPACT TO BAT MATERNITY ROOSTS PROTECTED UNDER THE ONTARIO ENDANGERED SPECIES ACT (ESA 2007).
 3) IF CLEARING MUST PROCEED WITHIN THE ABOVE NOTED WINDOWS, THE AFFECTED AREAS MUST BE SCREENED BY A QUALIFIED ECOLOGIST 48HRS IN ADVANCE OF CLEARING ACTIVITIES.

NOTE: TREE LOCATIONS COLLECTED USING EOS ARROW GOLD HIGH ACCURACY GNSS RECEIVER # PROCESSED USING ARCGIS # ACAD MAP 3D.

838281807978777675R 74 73 72 7170 69 68 67 85 84 Q P 66 65 64 N M 63 L 62 61 60 K J 9378 COUNTY RD 93

171 WILSON RD



GENERAL NOTES
 The Client and its contractors are responsible for all utility locates and confirming all setbacks, elevations, grades, etc. prior to installation of the constructed works. The Contractor is to report any discrepancies in writing to the Landscape Architect prior to proceeding with the works to determine the impact and suitability of the proposed works. The Landscape Architect will not be responsible for any unapproved adjustments on site. Construction of the works must conform to Authority requirements and applicable codes where they have jurisdiction.
 All specifications and drawings are instruments of service and are the property and ownership of the Landmark Environmental Group Ltd. As such, the drawings shall not be modified or reproduced without the expressed written consent of Landmark Environmental Group Ltd. or they will be considered void. The seal drawings are for Site Plan approval only and may require additional detailing prior to tender and construction. The Landmark Environmental Group Ltd. is not liable for errors or omissions from the use of these drawings prior to approval, seal, signature and date, and will be considered void.
 It is advised that the Contractor contact the Landscape Architect prior to commencement of the construction works to ensure that the Contractor has the latest approved drawings. The Landmark Environmental Group Ltd. is not responsible for the accuracy of the base drawing information (eg Survey, Architectural, Engineering, etc.) if there are any discrepancies, the Contractor will refer to the appropriate base drawing information and report discrepancies on the Landscape Drawings to the Landscape Architect.

- LEGEND**
- PROPERTY BOUNDARY
 - - - DRAWING MATCH LINES
 - ⊕ ON-SITE TREE LOCATION WITH CANOPY
 - ⊕ OFF-SITE TREE LOCATION WITH CANOPY
 - ▨ WOODED AREA TO BE REMOVED
 - X TREES TO REMOVE

NO	DATE	BY	REVISIONS
4	JAN 21-26	D.L	UPDATE ARBOR BASE PLANS AS NEW SITE PLAN
3	JAN 12-26	J.M	REVISED BOREHOLE ACCESS ROUTES
2	NOV 27-25	D.L	UPDATED ARBOR PLANS AS PER SURVEY PLAN
1	NOV 4-25	S.K	ISSUED FOR REVIEW

STAMP APPROVAL

AERIAL (2024) SOURCED FROM SIMCOE COUNTY GIS
 SITE PLAN FROM JONES CONSULTING GROUP LTD.
 (2026.01.16 - 9332 COUNTY ROAD 93 - SITE PLAN DWG/TRANS ON JAN 16, 2026
 SURVEY PLAN FROM RUDY MAK (17815 DWG) TRANS ON NOV 27, 2025

LANDSCAPE ARCHITECTS & CONSULTING ARBORISTS

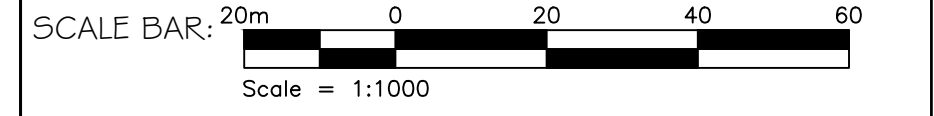
LANDMARK
 ENVIRONMENTAL GROUP LTD
 Landscape Architects
 Consulting Arborists
 Urban Forestry

OFFICE: 705-796-1122
 info@LEGroupLd.com
 www.LEGroupLd.com

CLIENT: PINE VALLEY ESTATES LTD.

PROJECT: PINE VALLEY HOMES SUBDIVISION DEVELOPMENT
 9332 COUNTY ROAD 93, MIDLAND ON

DRAWING: TREE PRESERVATION PLAN 2



PROJECT NO.: LA 1052-25 SCALE: 1:1000

MUNICIPAL FILE NO.: DATE: NOV.04-25

DRAWN BY: S.K., D.L, J.M. CHECKED BY: J.H. DRAWING No.: TP-2

NOTE:
 IN ACCORDANCE WITH THE ONTARIO FORESTRY ACT 1990, IT IS RECOMMENDED THAT THE OWNER OBTAIN A 'CONSENT TO HARM OR REMOVE' AGREEMENT FOR TREES OFFSITE AND BOUNDARY TREES. TREES ARE RECOMMENDED TO BE PRESERVED AT THEIR DRIPLINES UNTIL PERMISSION IS GRANTED.

NOTE:
 VEGETATION CLEARING IS TO BE AVOIDED:
 1) FROM APRIL 1 TO AUGUST 31 TO AVOID IMPACTS TO BIRDS PROTECTED UNDER THE MIGRATORY BIRDS CONVENTION ACT.
 2) FROM MAY 15 TO NOVEMBER 30 TO AVOID IMPACT TO BAT MATERNITY ROOSTS PROTECTED UNDER THE ONTARIO ENDANGERED SPECIES ACT (ESA 2007).
 3) IF CLEARING MUST PROCEED WITHIN THE ABOVE NOTED WINDOWS, THE AFFECTED AREAS MUST BE SCREENED BY A QUALIFIED ECOLOGIST 48HRS IN ADVANCE OF CLEARING ACTIVITIES.

NOTE: TREE LOCATIONS COLLECTED USING EOS ARROW GOLD HIGH ACCURACY GNSS RECEIVER & PROCESSED USING ARCGIS & ACAD MAP 3D.

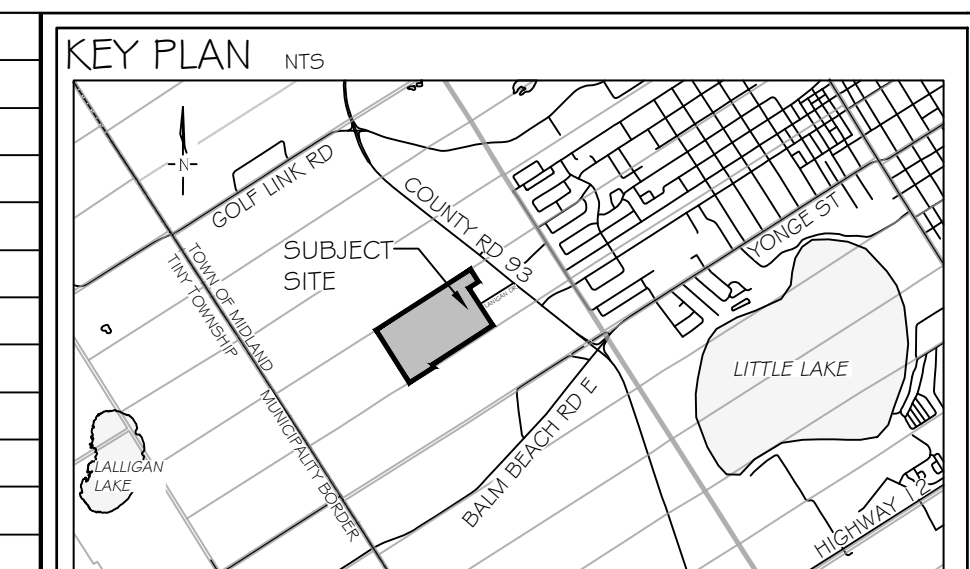
TREE INVENTORY Pine Valley									
Tree Key	Tree Location	Latin Name	Common Name	Comments	DBH	Rating	Canopy	Preserve or Remove	
1	Boundary	<i>Populus grandidentata</i>	Large-Tooth Aspen	one sided branches	18	3 Fair	4.1	Remove	
2	Boundary	<i>Populus grandidentata</i>	Large-Tooth Aspen	one sided branches	21	3 Fair	4.1	Remove	
3	Boundary	<i>Fagus grandifolia</i>	American Beech	one sided branches, multi-stem	18	3 Fair	3.5	Remove	
4	Boundary	<i>Acer saccharum</i>	Sugar Maple	massive canker on trunk, moderate dieback	22	2 Marginal	4.6	Remove	
5	Boundary	<i>Quercus rubra</i>	Red Oak	minor branch dieback, small sized dead branches	14	3 Fair	4.8	Remove	
6	Boundary	<i>Quercus rubra</i>	Red Oak	minor branch dieback, small sized dead branches	10	3 Fair	4.0	Remove	
7	Boundary	<i>Ostrya virginiana</i>	Ironwood	moderate branch dieback, small sized dead branches	17	3 Fair	4.0	Remove	
8	Boundary	<i>Acer saccharum</i>	Sugar Maple	moderate branch dieback, small sized dead branches, multi-stem	24	2 Marginal	4.0	Remove	
9	Boundary	<i>Populus tremuloides</i>	Trembling Aspen	moderate branch dieback, small sized dead branches	22	2 Marginal	3.6	Remove	
10	Boundary	<i>Acer saccharum</i>	Sugar Maple	dieback, medium sized dead branches, dual stem, included bark	30	2 Marginal	5.9	Remove	
11	Boundary	<i>Pinus strobus</i>	White Pine	major branch dieback, medium sized dead branches	14	2 Marginal	2.7	Remove	
12	Boundary	<i>Pinus strobus</i>	White Pine	moderate branch dieback, medium sized dead branches	23	2 Marginal	3.1	Remove	
13	Boundary	<i>Fraxinus americana</i>	White Ash	Emerald Ash Borer infestation	14	1 Poor	3.1	Remove	
14	Boundary	<i>Pinus strobus</i>	White Pine	moderate branch dieback, medium sized dead branches	38	2 Marginal	4.9	Remove	
15	Boundary	<i>Fraxinus americana</i>	White Ash	Emerald Ash Borer infestation	19	1 Poor	2.9	Remove	
16	Boundary	<i>Fraxinus americana</i>	White Ash	Emerald Ash Borer infestation	12	1 Poor	3.0	Remove	
17	Boundary	<i>Populus balsamifera</i>	Balsam Poplar	medium sized dead branches, moderate branch dieback	18	2 Marginal	1.9	Remove	
18	Boundary	<i>Pinus strobus</i>	White Pine	moderate branch dieback, multiple leaders, included bark	41	2 Marginal	5.2	Remove	
19	Boundary	<i>Quercus rubra</i>	Red Oak	moderate branch dieback, included bark, dead branches	23	2 Marginal	5.5	Remove	
20	Boundary	<i>Pinus sylvestris</i>	Scots Pine	almost dead	21	1 Poor	1.5	Remove	
21	Boundary	<i>Pinus strobus</i>	White Pine	moderate branch dieback	21	3 Fair	3.8	Remove	
22	Boundary	<i>Quercus rubra</i>	Red Oak	moderate branch dieback, dead branches	10	3 Fair	2.1	Remove	
23	Boundary	<i>Populus balsamifera</i>	Balsam Poplar	dual stem, dead branches, included bark, minor branch dieback	32	3 Fair	3.9	Remove	
24	Boundary	<i>Populus balsamifera</i>	Balsam Poplar	dead branches, included bark, minor branch dieback	40	2 Marginal	3.1	Remove	
25	Boundary	<i>Fagus grandifolia</i>	American Beech	dead branches, included bark, minor branch dieback	15	3 Fair	3.2	Remove	
26	Boundary	<i>Populus balsamifera</i>	Balsam Poplar	dead branches, major branch dieback, minimal crown	25	1 Poor	3.0	Remove	
27	Boundary	<i>Populus balsamifera</i>	Balsam Poplar	dead branches, minor branch dieback, reduced crown	34	2 Marginal	3.9	Remove	
28	Boundary	<i>Populus balsamifera</i>	Balsam Poplar	dead branches, moderate branch dieback, reduced crown	27	2 Marginal	3.2	Remove	
29	Offsite	<i>Populus balsamifera</i>	Balsam Poplar	dead branches, moderate branch dieback, reduced crown	31	2 Marginal	2.5	Remove	
30	Offsite	<i>Acer saccharum</i>	Sugar Maple	dead branches, moderate branch dieback, reduced crown	11	2 Marginal	3.1	Remove	
31	Offsite	<i>Populus balsamifera</i>	Balsam Poplar	dead branches, major branch dieback, reduced crown	23	1 Poor	2.1	Remove	
32	Offsite	<i>Populus balsamifera</i>	Balsam Poplar	dead branches, major branch dieback, reduced crown	27	1 Poor	1.9	Remove	
33	Boundary	<i>Populus balsamifera</i>	Balsam Poplar	3 stems, large dead branches, major branch dieback, reduced crown	27	1 Poor	3.5	Remove	
34	Boundary	<i>Populus balsamifera</i>	Balsam Poplar	large dead branches, major branch dieback, reduced crown	24	1 Poor	2.5	Remove	
35	Boundary	<i>Populus balsamifera</i>	Balsam Poplar	large dead branches, major branch dieback, reduced crown	31	1 Poor	3.1	Remove	
36	Boundary	<i>Populus balsamifera</i>	Balsam Poplar	large dead branches, major branch dieback, reduced crown	27	1 Poor	3.8	Remove	
37	Boundary	<i>Populus grandidentata</i>	Large-Tooth Aspen	large dead branches, major branch dieback, reduced crown, dual stem	22	1 Poor	3.2	Remove	
38	Boundary	<i>Populus grandidentata</i>	Large-Tooth Aspen	large dead branches, minor branch dieback	27	3 Fair	4.2	Remove	
39	Boundary	<i>Populus grandidentata</i>	Large-Tooth Aspen	large dead branches, minor branch dieback	20	3 Fair	3.5	Remove	
40	Boundary	<i>Quercus rubra</i>	Red Oak	dead branches, minor branch dieback, dual stem	10	3 Fair	3.7	Remove	
41	Boundary	<i>Populus tremuloides</i>	Trembling Aspen	dead branches, minor branch dieback	16	3 Fair	2.1	Remove	
A	Offsite	<i>Populus balsamifera</i>	Balsam Poplar	mostly dead	42	1 Poor	3.6	Remove	
B	Offsite	<i>Quercus rubra</i>	Red Oak	medium sized dead branches, moderate branch dieback	14	2 Marginal	4.5	Remove	
C	Offsite	<i>Quercus rubra</i>	Red Oak	large dead branches, fungus all over, cavities, moderate dieback	50	2 Marginal	8.1	Remove	
D	Boundary	<i>Populus balsamifera</i>	Balsam Poplar	dead branches, included bark, minor branch dieback	41	2 Marginal	2.5	Remove	
E	Offsite	<i>Acer saccharum</i>	Sugar Maple	dead branches, moderate branch dieback, reduced crown	14	2 Marginal	4.7	Remove	
F	Offsite	<i>Populus tremuloides</i>	Trembling Aspen	dead branches, minor branch dieback	14	3 Fair	2.2	Remove	
G	Offsite	<i>Populus tremuloides</i>	Trembling Aspen	dead branches, minor branch dieback	18	3 Fair	3.9	Remove	
H	Boundary	<i>Quercus rubra</i>	Red Oak	dead branches, minor branch dieback, dual stems	34	3 Fair	6.3	Remove	
J	Offsite	<i>Quercus rubra</i>	Red Oak	dual stem, included bark, dead branches, minor branch dieback	38	2 Marginal	6.5	Remove	
K	Offsite	<i>Quercus rubra</i>	Red Oak	dead branches, minor branch dieback	26	3 Fair	4.1	Remove	
L	Offsite	<i>Pinus strobus</i>	White Pine	dead branches, moderate branch dieback	22	2 Marginal	3.2	Remove	
M	Offsite	<i>Quercus rubra</i>	Red Oak	dead branches, moderate branch dieback	42	2 Marginal	4.1	Remove	
N	Offsite	<i>Quercus rubra</i>	Red Oak	6 stems, large dead branches, moderate branch dieback	42	1 Poor	4.6	Remove	
P	Boundary	<i>Pinus strobus</i>	White Pine	dead branches, moderate branch dieback	24	3 Fair	3.5	Remove	
Q	Boundary	<i>Quercus rubra</i>	Red Oak	dead branches, moderate branch dieback, cavities	46	2 Marginal	5.7	Remove	
R	Offsite	<i>Acer saccharum</i>	Sugar Maple	minor branch dieback, dead branches, 3 stem	24	3 Fair	4.5	Remove	

*Boundary & Offsite Tree removals are subject to consent letters from effected property owner(s).

42	Boundary	<i>Pinus strobus</i>	White Pine	dead branches, minor branch dieback	16	3 Fair	4.1	Remove	
43	Boundary	<i>Pinus strobus</i>	White Pine	dead branches, moderate branch dieback	21	2 Marginal	3.4	Remove	
44	Boundary	<i>Pinus strobus</i>	White Pine	dead branches, moderate branch dieback	40	2 Marginal	6.3	Remove	
45	Boundary	<i>Pinus strobus</i>	White Pine	dead branches, moderate branch dieback	24	2 Marginal	6.1	Remove	
46	Boundary	<i>Populus tremuloides</i>	Trembling Aspen	dead branches, moderate branch dieback	34	2 Marginal	6.1	Remove	
47	Boundary	<i>Quercus rubra</i>	Red Oak	dead branches, moderate branch dieback, storm damage	46	2 Marginal	7.0	Remove	
48	Boundary	<i>Populus balsamifera</i>	Balsam Poplar	dead branches, moderate branch dieback	33	2 Marginal	4.5	Remove	
49	Boundary	<i>Pinus strobus</i>	White Pine	dead branches, moderate branch dieback, dual stem	55	3 Fair	8.0	Remove	
50	Boundary	<i>Pinus strobus</i>	White Pine	dead branches, moderate branch dieback	24	3 Fair	5.1	Remove	
51	Boundary	<i>Pinus strobus</i>	White Pine	dead branches, moderate branch dieback	16	3 Fair	3.5	Remove	
52	Boundary	<i>Quercus rubra</i>	Red Oak	dead branches, moderate branch dieback	35	2 Marginal	6.7	Remove	
53	Boundary	<i>Quercus rubra</i>	Red Oak	dead branches, moderate branch dieback, dual stem	13	2 Marginal	3.6	Remove	
54	Boundary	<i>Populus balsamifera</i>	Balsam Poplar	dead branches, moderate branch dieback	30	2 Marginal	4.0	Remove	
55	Boundary	<i>Quercus rubra</i>	Red Oak	dead branches, moderate branch dieback	24	2 Marginal	5.1	Remove	
56	Boundary	<i>Quercus rubra</i>	Red Oak	dead branches, major branch dieback	39	1 Poor	7.2	Remove	
57	Boundary	<i>Quercus rubra</i>	Red Oak	dead branches, major branch dieback, dual stem	26	1 Poor	7.2	Remove	
58	Boundary	<i>Quercus rubra</i>	Red Oak	dead branches, moderate branch dieback, triple stem	39	2 Marginal	7.2	Remove	
59	Boundary	<i>Quercus rubra</i>	Red Oak	dead branches, moderate branch dieback, lean	14	2 Marginal	5.3	Remove	
60	Offsite	<i>Acer saccharum</i>	Sugar Maple	5 stems, major branch dieback, trunk deformity, included bark, cankers	24	1 Poor	4.1	Remove	
61	Offsite	<i>Populus balsamifera</i>	Balsam Poplar	dead branches, moderate branch dieback	26	2 Marginal	3.7	Remove	
62	Offsite	<i>Populus balsamifera</i>	Balsam Poplar	dead branches, moderate branch dieback	39	2 Marginal	3.7	Remove	
63	Offsite	<i>Populus balsamifera</i>	Balsam Poplar	dead branches, moderate branch dieback	49	2 Marginal	4.6	Remove	
64	Boundary	<i>Quercus rubra</i>	Red Oak	4 stems, large dead branches, moderate branch dieback	36	2 Marginal	5.1	Remove	
65	Boundary	<i>Quercus rubra</i>	Red Oak	large dead branches, moderate branch dieback	27	2 Marginal	5.2	Remove	
66	Boundary	<i>Quercus rubra</i>	Red Oak	dead branches, minor branch dieback	15	3 Fair	2.9	Remove	
67	Boundary	<i>Quercus rubra</i>	Red Oak	dead branches, moderate branch dieback	30	2 Marginal	5.2	Remove	
68	Boundary	<i>Quercus rubra</i>	Red Oak	dead branches, moderate branch dieback	36	2 Marginal	7.1	Remove	
69	Boundary	<i>Quercus rubra</i>	Red Oak	dead branches, moderate branch dieback	24	2 Marginal	3.6	Remove	
70	Boundary	<i>Pinus strobus</i>	White Pine	dead branches, moderate branch dieback	36	2 Marginal	4.2	Remove	
71	Boundary	<i>Quercus rubra</i>	Red Oak	dead branches, moderate branch dieback	34	2 Marginal	3.7	Remove	
72	Boundary	<i>Quercus rubra</i>	Red Oak	minor branch dieback	22	3 Fair	3.1	Remove	
73	Boundary	<i>Acer saccharum</i>	Sugar Maple	minor branch dieback, cankers	35	3 Fair	5.1	Remove	
74	Boundary	<i>Quercus rubra</i>	Red Oak	minor branch dieback, dead branches	36	3 Fair	5.6	Remove	
75	Boundary	<i>Ostrya virginiana</i>	Ironwood	minor branch dieback, dead branches, 4 stem	14	3 Fair	4.5	Remove	
76	Boundary	<i>Quercus rubra</i>	Red Oak	moderate branch dieback, dead branches	29	2 Marginal	2.5	Remove	
77	Boundary	<i>Quercus rubra</i>	Red Oak	moderate branch dieback, dead branches	30	2 Marginal	3.7	Remove	
78	Boundary	<i>Pinus strobus</i>	White Pine	moderate branch dieback, dead branches	20	2 Marginal	2.7	Remove	
79	Boundary	<i>Quercus rubra</i>	Red Oak	moderate branch dieback, dead branches	32	2 Marginal	3.5	Remove	
80	Boundary	<i>Pinus strobus</i>	White Pine	moderate branch dieback, dead branches	35	2 Marginal	3.6	Remove	
81	Boundary	<i>Pinus strobus</i>	White Pine	moderate branch dieback, dead branches, dual stem, included bark	57	2 Marginal	6.8	Remove	
82	Boundary	<i>Ostrya virginiana</i>	Ironwood	moderate branch dieback, dead branches	15	2 Marginal	5.0	Remove	
83	Boundary	<i>Ostrya virginiana</i>	Ironwood	moderate branch dieback, dead branches	12	2 Marginal	5.0	Remove	
84	Offsite	<i>Populus balsamifera</i>	Balsam Poplar	dead branches, moderate branch dieback	26	2 Marginal	3.4	Remove	
85	Offsite	<i>Quercus rubra</i>	Red Oak	dead branches, moderate branch dieback	30	2 Marginal	5.1	Remove	

TREE STAND DELINEATION Wooded Areas			
Latin Name	Common Name	Species %	CM/DBH
<i>Quercus rubra</i>	Red Oak	36%	10 to 60
<i>Populus balsamifera</i>	Balsam Poplar	24%	10 to 40
<i>Pinus strobus</i>	White Pine	17%	10 to 35
<i>Acer saccharum</i>	Sugar Maple	7%	10 to 60
<i>Populus grandidentata</i>	Large-Tooth Aspen	4%	10 to 30
<i>Populus tremuloides</i>	Trembling Aspen	4%	10 to 25
<i>Ostrya virginiana</i>	Ironwood	2%	10 to 20
<i>Fraxinus americana</i>	White Ash	2%	10 to 25
<i>Fagus grandifolia</i>	American Beech	2%	10 to 25
<i>Pinus sylvestris</i>	Scots Pine	1%	10 to 30
<i>Prunus serotina</i>	Black Cherry	1%	10 to 40
Total (subject to rounding)		100%	

TREE COMPOSITION Boundary & Offsite Trees			
Latin Name	Common Name	%	
<i>Quercus rubra</i>	Red Oak	33%	
<i>Populus balsamifera</i>	Balsam Poplar	21%	
<i>Pinus strobus</i>	White Pine	19%	
<i>Acer saccharum</i>	Sugar Maple	8%	
<i>Populus grandidentata</i>	Large-Tooth Aspen	5%	
<i>Populus tremuloides</i>	Trembling Aspen	5%	
<i>Ostrya virginiana</i>	Ironwood	4%	
<i>Fraxinus americana</i>	White Ash	3%	
<i>Fagus grandifolia</i>	American Beech	2%	
<i>Pinus sylvestris</i>	Scots Pine	1%	
Total (subject to rounding)		100%	



GENERAL NOTES
 The Client and its contractors are responsible for all utility locates and confirming all setbacks, elevations, grades, etc. prior to installation of the constructed works. The Contractor is to report any discrepancies in writing to the Landscape Architect prior to proceeding with the works to determine the impact and suitability of the proposed works. The Landscape Architect will not be responsible for any unapproved adjustments on site. Construction of the works must conform to Authority requirements and applicable codes where they have jurisdiction. All specifications and drawings are instruments of service and are the property and ownership of the Landmark Environmental Group Ltd. As such, the drawings shall not be modified or reproduced without the expressed written consent of Landmark Environmental Group Ltd. or they will be considered void. The seal drawings are for Site Plan approval only and may require additional detailing prior to tender and construction. The Landmark Environmental Group Ltd. is not liable for errors or omissions from the use of these drawings prior to approval, seal, signature and date, and will be considered void. It is advised that the Contractor contact the Landscape Architect prior to commencement of the construction works to ensure that the Contractor has the latest approved drawings. The Landmark Environmental Group Ltd. is not responsible for the accuracy of the base drawing information (eg Survey, Architectural, Engineering, etc.) if there are any discrepancies, the Contractor will refer to the appropriate base drawing information and report discrepancies on the Landscape Drawings to the Landscape Architect.
 © Copyright Landmark Environmental Group Ltd.

LEGEND

NO	DATE	BY	REVISIONS
4	JAN 21-26	D.L.	UPDATE ARBOR BASE PLANS AS NEW SITE PLAN
3	JAN 12-26	J.M.	REVISED BOREHOLE ACCESS ROUTES
2	NOV 27-25	D.L.	UPDATED ARBOR PLANS AS PER SURVEY PLAN
1	NOV 4-25	S.K.	ISSUED FOR REVIEW

STAMP APPROVAL

AERIAL [2024] SOURCED FROM SIMCOE COUNTY GIS
 SITE PLAN FROM JONES CONSULTING GROUP LTD.
 (2025.06.04-9332 CITY RD 93-CONCEPT PLAN.PDF) TRANS ON OCT. 10, 2025

LANDMARK ENVIRONMENTAL GROUP LTD. OFFICE: 705-796-1122
 info@LEGroupltd.com
 www.LEGroup1td.com

CLIENT: PINE VALLEY ESTATES LTD.

PROJECT: PINE VALLEY HOMES SUBDIVISION DEVELOPMENT
 9332 COUNTY ROAD 93, MIDLAND ON

DRAWING: DETAILS

SCALE BAR:

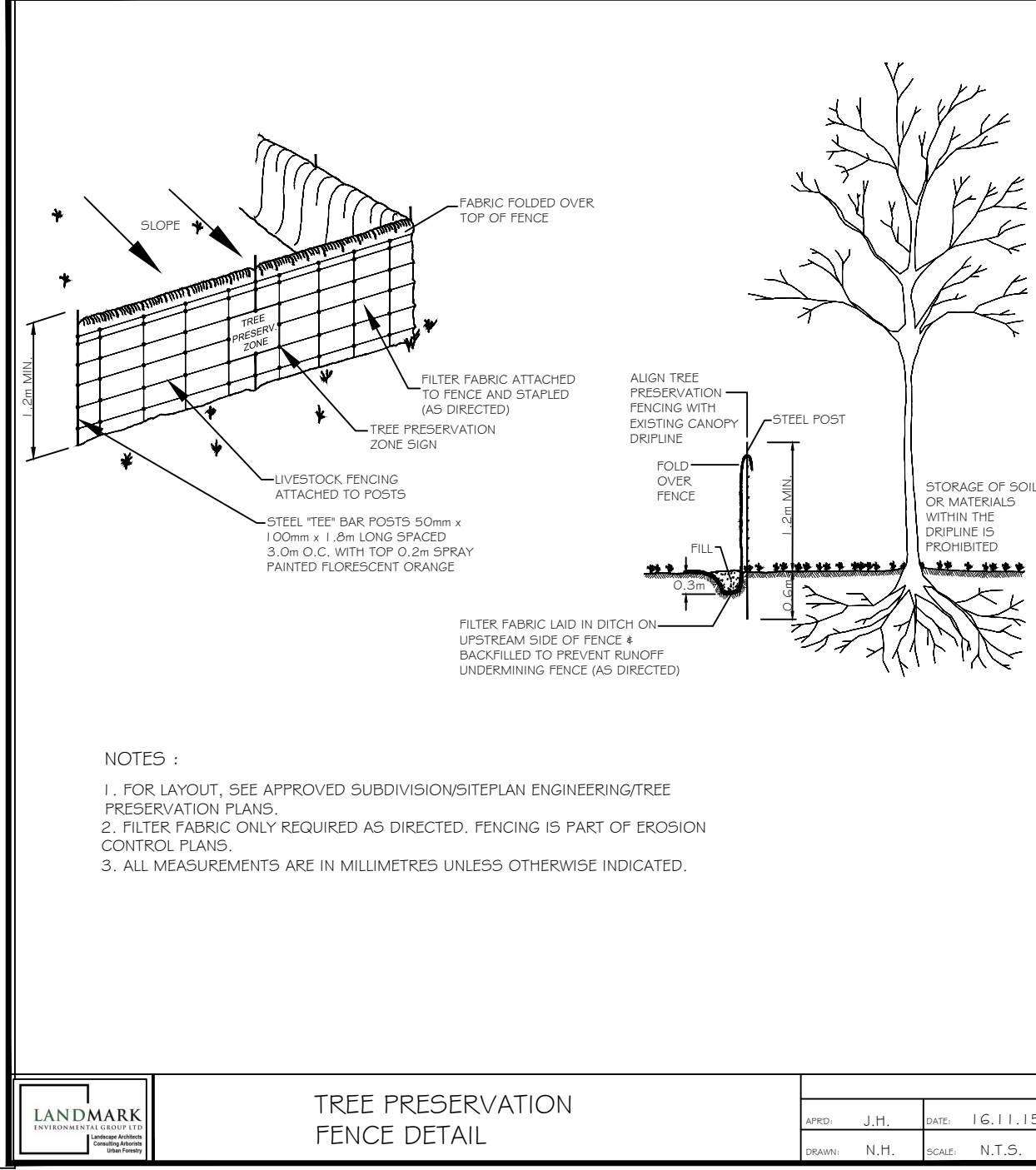
PROJECT NO.: LA 1052-25

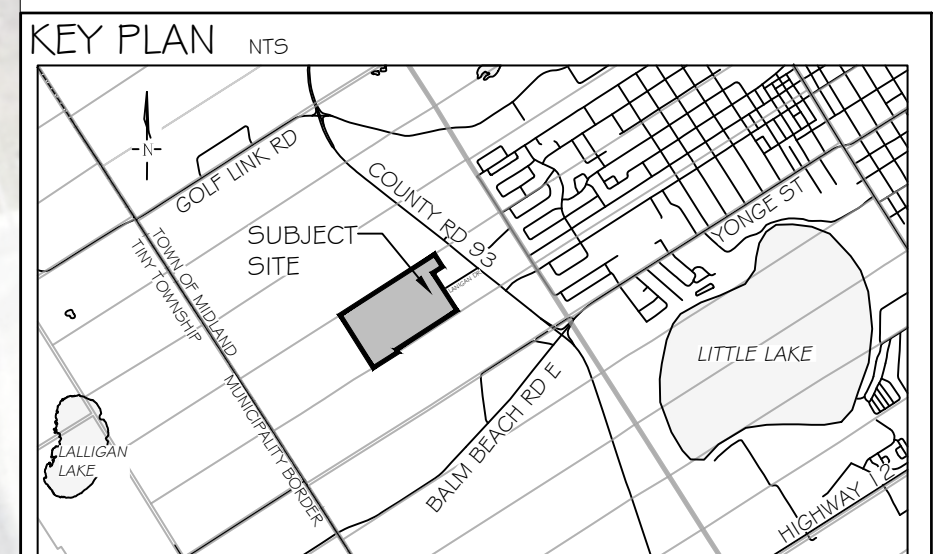
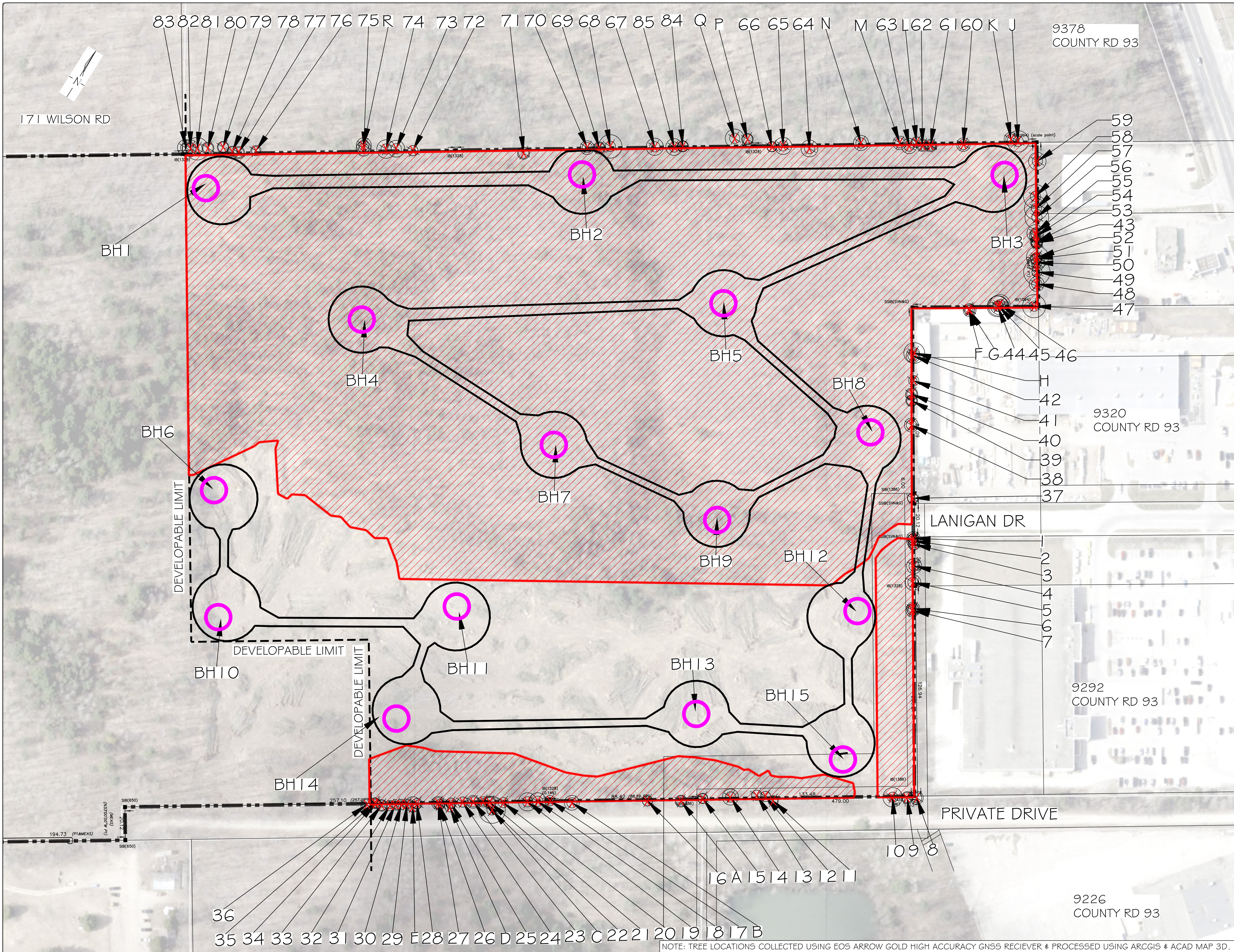
MUNICIPAL FILE NO.: DATE: NOV.04-25

DRAWN BY: S.K., D.L., J.M. CHECKED BY: J.H. DRAWING No.: LD-2

TREE PRESERVATION NOTES

- THE INTENT OF THE TREE PRESERVATION PLAN IS TO PROVIDE PROTECTION AND PRESERVATION FOR EXISTING TREES ON THE SUBJECT PROPERTY. THEREFORE, ALL TREES ARE TO BE PRESERVED UNLESS OTHERWISE INDICATED IN THE PLAN OR THE ARBORIST'S REPORT. CONTACT THE LANDSCAPE ARCHITECT TO CONFIRM THE REMOVAL/RETENTION STATUS OF ANY TREES ON SITE, PRIOR TO CLEARING AND GRUBBING. THE OWNER WILL TAKE EVERY PRECAUTION TO PROTECT AND PRESERVE THE TREES APPROVED TO BE RETAINED IN ACCORDANCE WITH THE APPROVED PLANS.
- PRIOR TO THE COMMENCEMENT OF ANY CLEARING, GRUBBING OR CONSTRUCTION WORKS, THE REQUIRED HOARDING WILL BE ERRECTED AT THE OUTERMOST DRIFLINE OF ANY TREE TO BE RETAINED, IN ACCORDANCE WITH THE HOARDING DETAIL, AND TO THE SATISFACTION OF THE LANDSCAPE ARCHITECT.
- IT IS THE RESPONSIBILITY OF THE CONTRACTOR TO ERRECT AND MAINTAIN ALL HOARDING AS PER THE APPROVED DETAIL, PRESERVATION NOTES AND LOCATIONS SHOWN ON THE DRAWINGS.
- NO STORAGE OF EQUIPMENT OR VEHICLES, NOR ANY STOCKPILING OF MATERIAL IS TO OCCUR WITHIN THE AREA OF PRESERVATION/PROTECTION. TREES SLATED FOR PROTECTION WILL NOT BE USED FOR RIGGING OR WRAPPING. THE PROTECTION/PRESERVATION AREA SHALL NOT BE USED TO EMPTY CONTAMINANTS, REFUELING OR REPAIR OF VEHICLES OR EQUIPMENT.
- TREES LOCATED ON THE IMMEDIATE EDGE OF THE CONSTRUCTION WORKS ARE TO BE PRUNED IN THE INTEREST OF SAFETY, IN ACCORDANCE WITH APPROVED ARBORICULTURAL PRACTICES.
- TREE LOCATIONS ARE APPROXIMATE AND THEREFORE VERIFICATION ON SITE IS REQUIRED.
- SHOULD A TREE REQUIRED TO BE PROTECTED BECOME DAMAGED OR REMOVED WITHOUT WRITTEN PERMISSION OF THE TOWNSHIP OF TAY OR THE LANDSCAPE ARCHITECT, THE CONTRACTOR OR OWNER WILL BE RESPONSIBLE FOR REPLACEMENT OF THE TREE OF EQUAL CALIBER AND ACCEPTABLE TREE SPECIES AT THE DISCRETION AND SATISFACTION OF THE LANDSCAPE ARCHITECT.
- THE WORK COMPLETED BY THE CONTRACTOR WILL NOT CAUSE OR EXACERBATE FLOODING CONDITIONS OR CAUSE SEDIMENT BUILDUP OVER THE ROOTZONE OF PROTECTED TREES. NO GRADING SHALL TAKE PLACE WITHIN THE TREE PRESERVATION AREA UNLESS OTHERWISE APPROVED BY THE LANDSCAPE ARCHITECT.
- ANY REQUIRED LIMB TRIMMING SHALL BE UNDER THE DIRECT SUPERVISION OF THE LANDSCAPE ARCHITECT OR A QUALIFIED ARBORIST.
- PRESERVATION FENCING TO BE INSTALLED IN ACCORDANCE WITH THE APPROVED DETAIL. FILTER FABRIC TO BE INSTALLED IN CONJUNCTION WITH THE APPROVED ENGINEERING DRAWINGS.
- HOARDING/TREE PRESERVATION MAY BE COMPLETED IN CONJUNCTION WITH SEDIMENTATION CONTROL.





GENERAL NOTES

The Client and its contractors are responsible for all utility locates and confirming all setbacks, elevations, grades, etc. prior to installation of the constructed works. The Contractor is to report any discrepancies in writing to the Landscape Architect prior to proceeding with the works to determine the impact and suitability of the proposed works. The Landscape Architect will not be responsible for any unapproved adjustments on site. Construction of the works must conform to Authority requirements and applicable codes where they have jurisdiction.

All specifications and drawings are instruments of service and are the property and ownership of the Landmark Environmental Group Ltd. As such, the drawings shall not be modified or reproduced without the expressed written consent of Landmark Environmental Group Ltd. or they will be considered void. The seal drawings are for Site Plan approval only and may require additional detailing prior to tender and construction. The Landmark Environmental Group Ltd. is not liable for errors or omissions from the use of these drawings prior to approval, seal, signature and date, and will be considered void.

It is advised that the Contractor contact the Landscape Architect prior to commencement of the construction works to ensure that the Contractor has the latest approved drawings. The Landmark Environmental Group Ltd. is not responsible for the accuracy of the base drawing information (eg Survey, Architectural, Engineering, etc.). If there are any discrepancies, the Contractor will refer to the appropriate base drawing information and report discrepancies on the Landscape Drawings to the Landscape Architect.

© Copyright Landmark Environmental Group Ltd

- LEGEND**
- PROPERTY BOUNDARY
 - DRAWING MATCH LINES
 - BOREHOLE LOCATIONS
 - DRAWING MATCH LINES
 - ON-SITE TREE LOCATION WITH CANOPY
 - OFF-SITE TREE LOCATION WITH CANOPY
 - WOODED AREA TO BE REMOVED
 - TREES TO REMOVE

NO	DATE	BY	REVISIONS
4	JAN 21-26	D.L	UPDATE ARBOR BASE PLANS AS NEW SITE PLAN
3	JAN 12-26	J.M	REVISED BOREHOLE ACCESS ROUTES
2	NOV 27-25	D.L	UPDATED ARBOR PLANS AS PER SURVEY PLAN
1	NOV 4-25	S.K	ISSUED FOR REVIEW

STAMP APPROVAL

AERIAL (2024) SOURCED FROM SIMCOE COUNTY GIS
 SITE PLAN FROM JONES CONSULTING GROUP LTD.
 (2025 06 04-9332 CITY RD 93-CONCEPT PLAN.FDP) TRANS ON OCT. 10, 2025
 SURVEY PLAN FROM RUDY MAK(17815.DWG) TRANS ON NOV. 27, 2025

LANDMARK ENVIRONMENTAL GROUP LTD
 LANDSCAPE ARCHITECTS & CONSULTING ARBORISTS
 OFFICE: 705-796-1122
 info@LEGroupLtd.com
 www.LEGroupLtd.com

CLIENT: PINE VALLEY ESTATES LTD.

PROJECT: PINE VALLEY HOMES SUBDIVISION DEVELOPMENT
 9332 COUNTY ROAD 93, MIDLAND ON

DRAWING: BORE HOLE REMOVAL I
 SCALE BAR: 20m 0 20 40 60
 Scale = 1:1000

PROJECT NO.: LA 1052-25 SCALE: 1:1000

MUNICIPAL FILE NO.: DATE: NOV.04-25

DRAWN BY: S.K, D.L, J.M CHECKED BY: J.H DRAWING No.: BHR-I

NOTE: TREE LOCATIONS COLLECTED USING EOS ARROW GOLD HIGH ACCURACY GNSS RECEIVER # PROCESSED USING ARCGIS # ACAD MAP 3D.