



LITTLE LAKE PARK SPLASH PAD

PUBLIC INFORMATION CENTRE

Wednesday March 25th | 4:00pm - 6:00pm

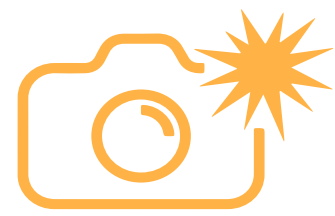
Bourgeois Community Centre

Bill Thompson Room

The Town of Midland is developing a Splash Pad at Little Lake Park! We welcome you today and ask that you join the pl.ural team to learn more about the project and share your thoughts on the Little Lake Splash Pad in the Midland community

Welcome!

As a 'drop in' style event, we encourage you to stay only as long as you would like. We ask that all guest please sign in, and encourage your participation in the hands on activities to help shape the future of this project.



Please be informed that we will be taking photos to capture the event.
Kindly let us know if you do not want to be photographed.
Thanks!

Connect with us



Facebook: Town of Midland

Want to learn more?

Please Visit:
www.midland.ca/explore-play/parks-amenities/splash-pad-project/

Scan the QR code to directly link to the project info page!



Scan Me



THE PROJECT



What's Happening?

The Town of Midland is developing a splash pad at Little Lake Park.

A splash pad is an immersive zero depth aquatic play area enjoyed by many on those hot summer days. Many fixtures are available providing a range of fun filled splashing. A water park splash pad makes it easy for everyone to participate, from toddlers to grandparents. A full spectrum of safe play experiences makes the splash pad accessible for children of all abilities and parents can enjoy peace of mind while having fun. It is understood that splash pads provide an opportunity for community engagement, social interaction and inclusive recreation.



Work Completed To Date:

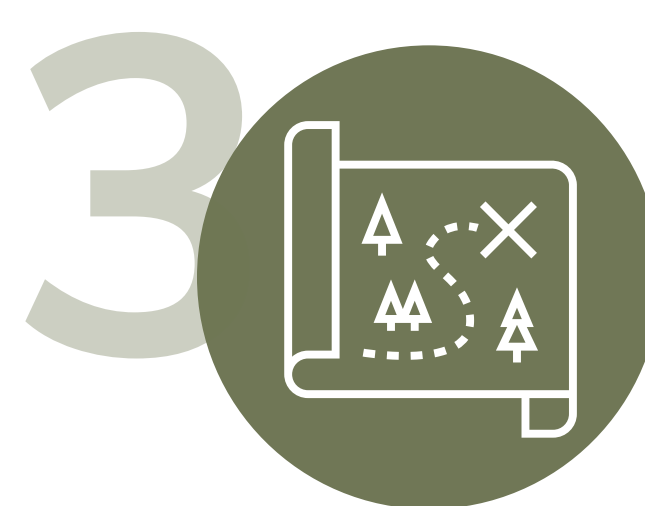


PHASE ONE:
Project Initiation &
Background Review



PHASE TWO:
Inventory, Assessment
& Engagement

Next Steps:



PHASE THREE:
Final Theme and
Splash Pad Design



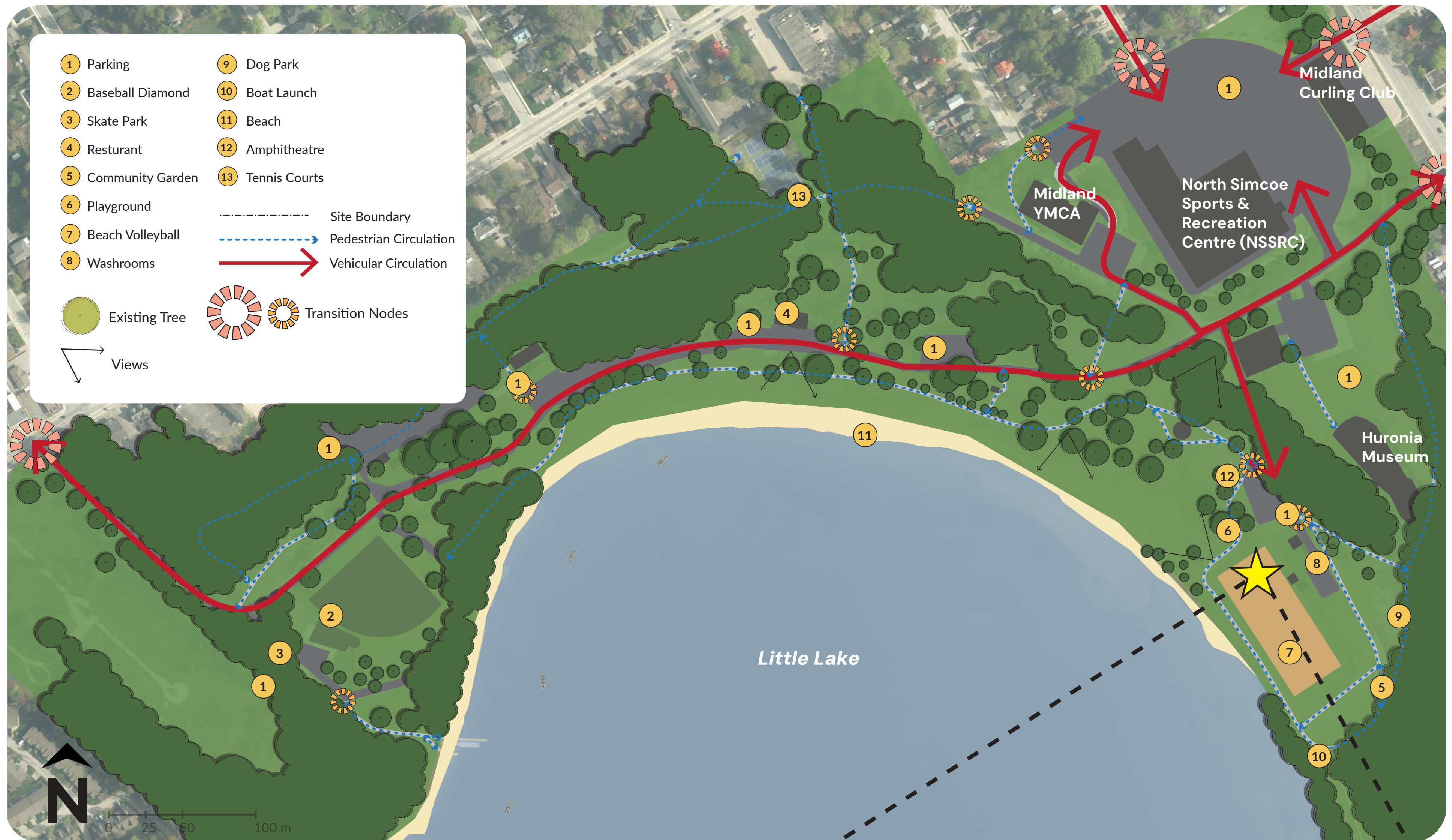
PHASE FOUR:
Construction and
Implementation

Project Timeline



EXISTING CONDITIONS

Little Lake Park



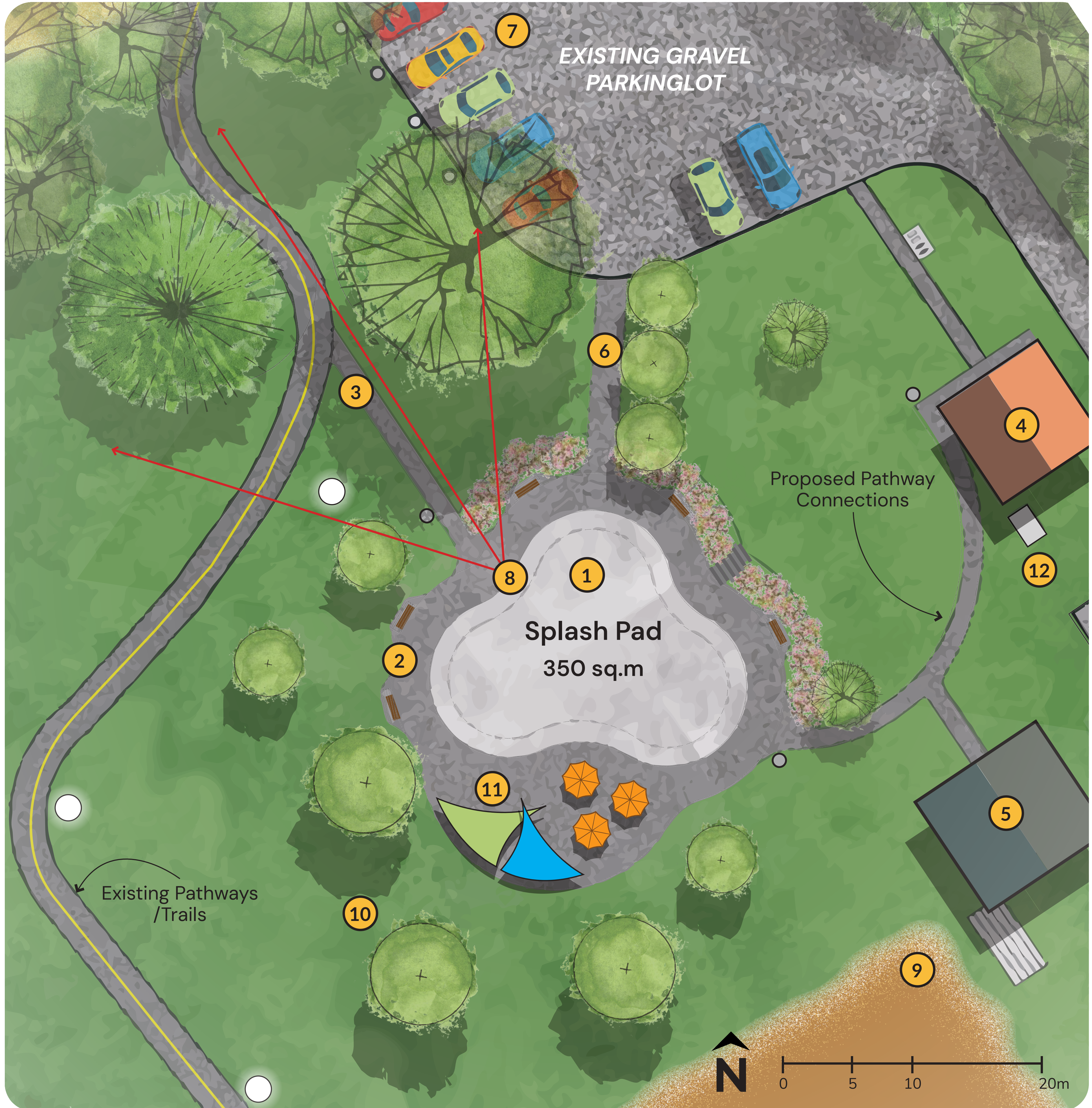
Splash Pad Location

-  Can accommodate up to a 300 sq.m + sized splash pad
-  In close proximity to other existing amenities and facilities
-  Good site lines to existing amenities and facilities
-  Lots of existing parking nearby/around to accommodate splash pad
-  Existing washroom close enough to house equipment and control panel
-  Location is already programmed for active recreation, making it a natural fit
-  Redeveloping this space represents an efficient use of land by replacing a single-use feature with a more inclusive facility.
-  Separation from more passive park areas helps minimize user conflicts and noise concerns.



SPLASH PAD LAYOUT

Proposed Layout



LEGEND

- ① **Splash Pad**
 - Features 10–15 above ground and ground sprays
- ② **Benches** located in both sunnier and shadier areas
- ③ **Pathway Connections:** to connect visitors to the splash pad and to other neighbouring amenities
- ④ **Existing Park Washrooms**
- ⑤ **Existing Park Pavilion**
- ⑥ **Splash Pad Entry:** include gate, decorative planting, signage, bike racks etc.
- ⑦ **Existing Parking**
- ⑧ **View shed:** maintain views towards existing playground area and other park amenities
- ⑨ **Reconfigured Beach Volleyball Courts** to accommodate new splash pad programming
- ⑩ **Additional trees for shade, buffer and entrance staging;** opportunity for additional understory plantings (shrubs, perennials, etc.)
- ⑪ **Shade Sail and Additional Shade Furnishings:** additional shade opportunity and / or gathering space (parent congregation / surveillance)
- ⑫ **Mechanical vault** for splash pad (2m x 2m)

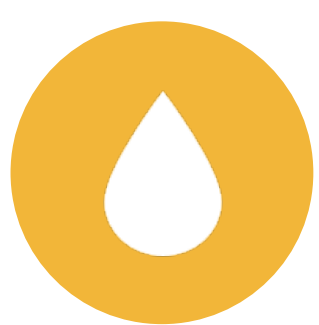


HOW DOES IT WORK?

Splash Pad Operation

Water Sequencing

The system is programmed so that only specific clusters of features run at once. For example, when one set of geysers is active, other sections may be off. This encourages children to move around the play area rather than staying in one spot.



Water Conservation

By only running specific sequences, a splash pad can cut its water usage (Gallons Per Minute) by more than half.



Crowd Control

Moving the water flow from one area to another naturally shifts the crowd, preventing overcrowding in a single spot

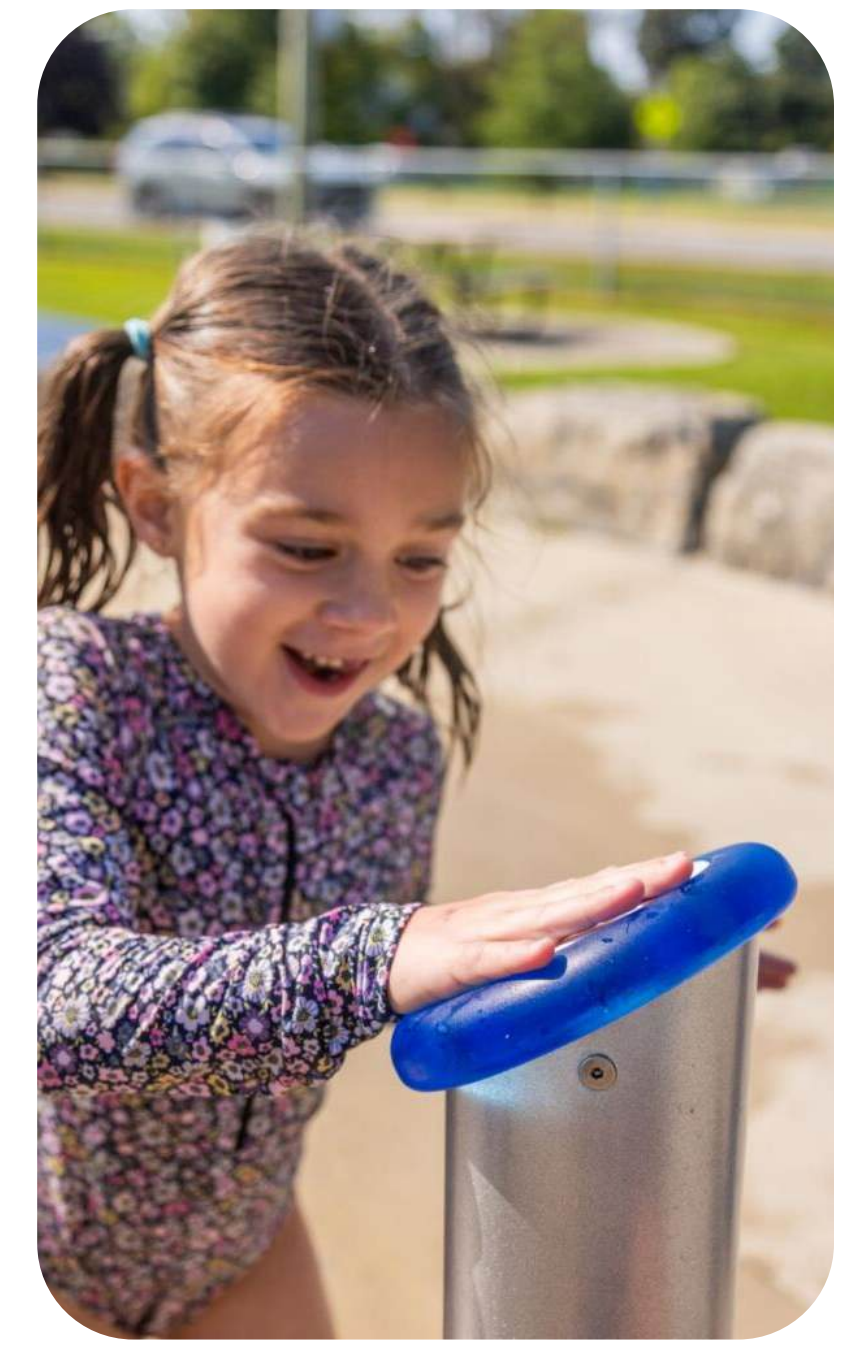


Engagement

The “unpredictable” nature of changing water sequences keeps the play experience fresh and exciting for children over longer periods.

On-demand Activation

Many Splash pads include “activators” (like touch sensors or handprint poles). The water only flows when someone interacts with these sensors, which prevents water from running constantly when no one is playing.



Above Ground Features



Ground Spray Features



Single, Multi & Accessible Users



Single User

Single user water play features require more space per user and tend to lower overall capacity and reduce user flow.



Multi User

Multi-user water play features attract tight groups, adding a new dynamic to the fun and increasing overall capacity.



Interactives

Interactive water play products fall somewhere in between as they promote team work and collaboration.



Accessibility

All features prioritize inclusive, multigenerational splash pad design through zero-depth, barrier-free layouts, non-slip surfaces, accessible activations, and sensory-rich features that enable users of all abilities to play together.



COLOUR & STYLE

What Colours Would You Prefer for the Splash Pad?

Water/Beachy Tones



Place your sticker(s) here!

Primary Colours



Place your sticker(s) here!

Nature/Landscape Tones



Place your sticker(s) here!

Town of Midland Colours



Place your sticker(s) here!

What Style Of Splash Pad Would You Prefer?

Traditional/Primary



Place your sticker(s) here!

Modern



Place your sticker(s) here!

Custom



Place your sticker(s) here!

Destination



Place your sticker(s) here!

If you have any ideas on Custom and/or Destination Designs please let us know with a sticky note or a comment card!



FEATURES

What Features Would You Prefer for the Splash Pad?

Water Dumping



Place your sticker(s) here!

Tunnels



Place your sticker(s) here!

Sprayers



Place your sticker(s) here!

Tower Fountains



Place your sticker(s) here!

Ground Jets, Walls, Guysers



Place your sticker(s) here!

Spinning Sprays



Place your sticker(s) here!

Fountains



Place your sticker(s) here!

Cartoon




Place your sticker(s) here!


NATURE: WHAT IT COULD BE LIKE


Overview

The 'Nature' theme draws inspiration from the native plants and shoreline ecology of Little Lake, transforming cattails, reeds, and wildflowers into interactive splash features that mimic a vibrant lakeside garden.


Takeaways

 **Connection to the Lake and Park Ecosystem**

 **Celebrating Local Biodiversity**

 **Place-based Identity for Midland**

 **Educational and Environmental Awareness**

 **Visual Harmony with the Park Setting**

Like This Theme?
Place Your Vote Here!

Place your sticker(s) here!



Key Elements

Plant/Nature Inspired Features



Landscape Colour Palette



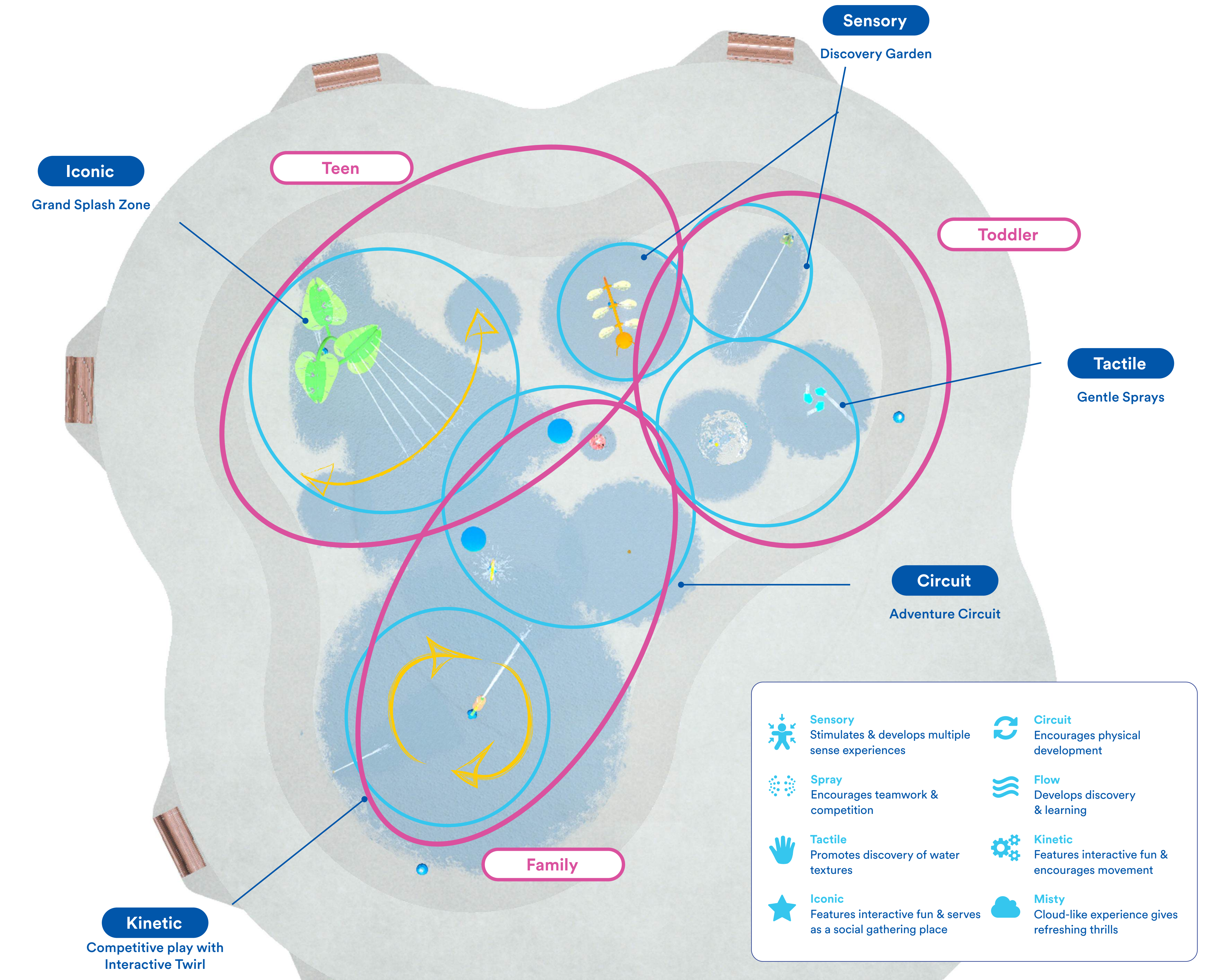
Ground Spray Experience



Family-Friendly Nature Play



How It Works: Play Value Planning



LAKE SIDE: WHAT IT COULD BE LIKE

Overview

The 'Lakeside' theme captures the energy and familiarity of a lakeside experience at Little Lake, using splash features inspired by waves, fish, and waterfront elements to evoke a day at the shore. With a palette of blues, sandy tones, and greens, the design celebrates Georgian Bay's recreational identity and Midland's strong connection to water.


Takeaways

 **Strong Local Waterfront Identity**

 **Connection to Little Lake Recreation**

 **Family Friendly and Recognizable**

 **Celebrates Summer Outdoor Culture**

 **Visual Cohesion with the Park Setting**

Like This Theme?
Place your vote here!

Place your sticker(s) here!



Key Elements

Lake Inspired Features



Shoreline Colour Palette



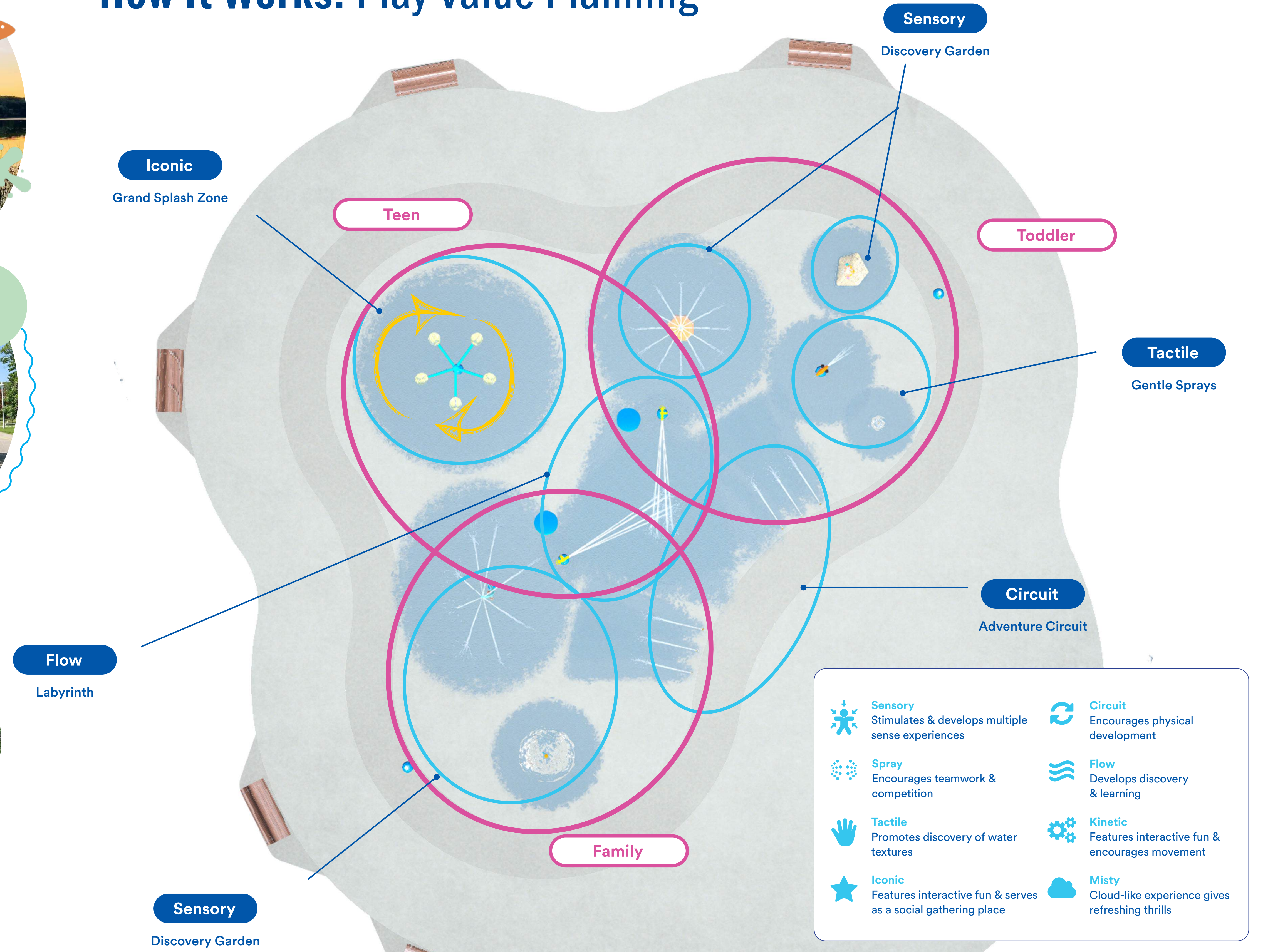
Water Movement Effects



Playful Waterfront Imagery



How It Works: Play Value Planning




VIBRANT + COLOURFUL: WHAT IT COULD BE LIKE

Overview


The 'Vibrant + Colourful' theme features bold colours, abstract forms, and dynamic spray elements to create a high-energy, visually striking splash pad experience. Focused on play value and flexibility rather than a specific narrative, it offers a modern and engaging environment within Little Lake Park.

Takeaways

 **Highly Recognizable Splash Pad Style**

 **Strong Visual Impact**

 **Flexible and Timeless Design**

 **Focus on Play Value**

 **Low Thematic Constraints**

Like This Theme?
Place your vote here!

Place your sticker(s) here!



Key Elements

Bold Colour Palette



Modern Splash Structures



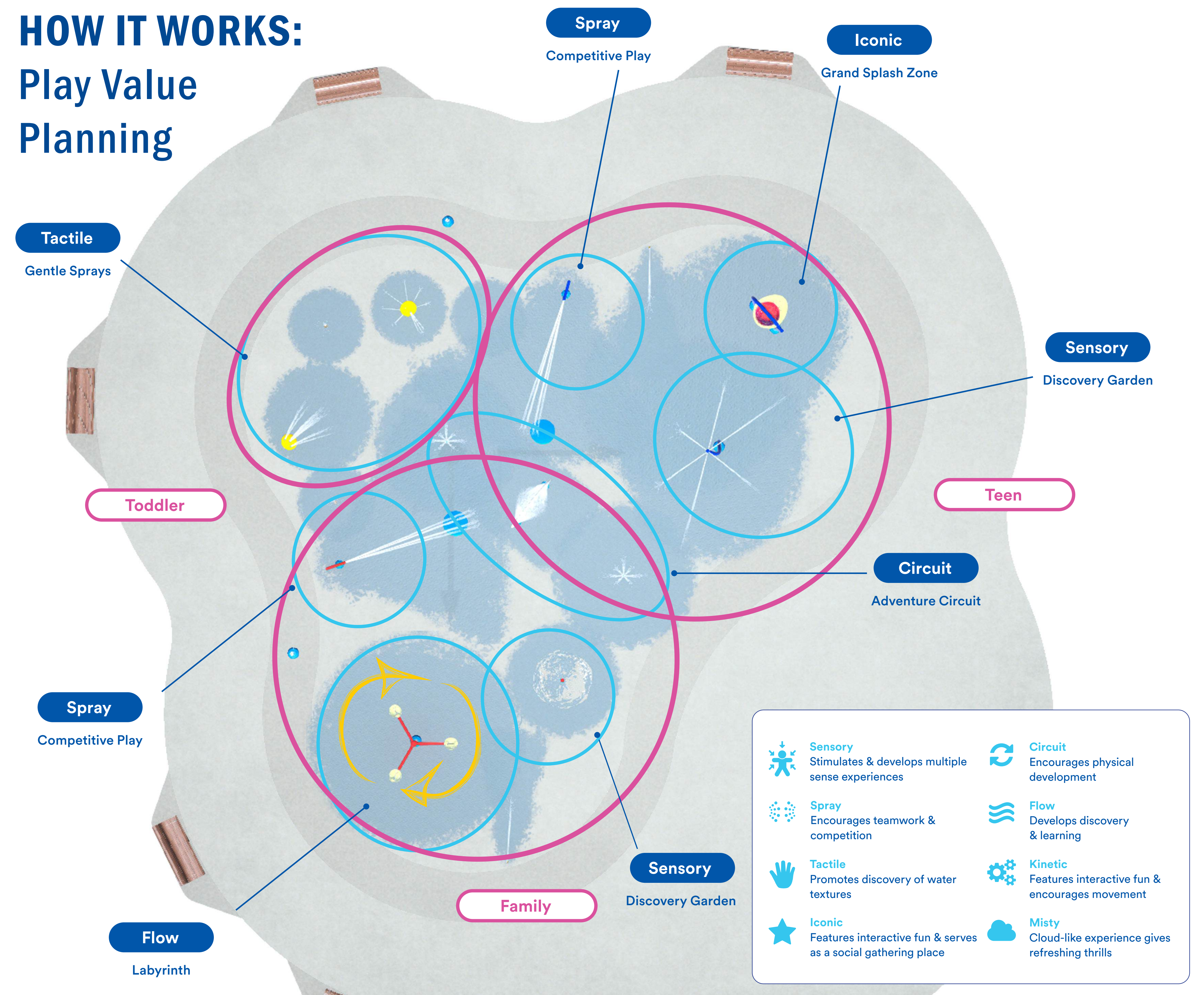
Dynamic Water Play



Clean Contemporary Design



HOW IT WORKS: Play Value Planning



THANK YOU!



Thank You!

Thank you for wanting to learn more about the project and for supporting the Town of Midland develop a vision and framework to guide the future of the splash pad at Little Lake Park!

What's Next?

The feedback and results from this Public Information Centre (PIC) will then help guide us through the next steps of the project including preferred theme and design. Construction and implementation will occur shortly after a design is finalized and the Town hopes to have the Splash Pad open for everyone to enjoy this summer!

We'd Love To Hear From You!

We'd love to hear what you think!
If you would like to share your thoughts, please submit a comment sheet provided before you leave.

- **Did we miss something?**
- **Are there concerns you would like to see addressed?**
- **Do you feel that the splash pad meets your expectations and support your community?**
- **Are there strengths that should be celebrated? What do you think could be improved?**

Connect With Us!



Facebook:
[@TownofMidland](#)

Want to learn more?
Visit: www.midland.ca/explore-play/parks-amenities/splash-pad-project/

Why Should You Participate?

Shape Your Community

Your participation and input will help make the splash pad at little lake a place that everyone can enjoy and navigate easily!



Be Heard

This is your chance to make sure your voice is heard in decisions that affect your community.



Make a Difference

By contributing to this project, you are helping build a better, more enjoyable, and sustainable environment for everyone.

