

# URBAN DESIGN BRIEF



9332 COUNTY ROAD 93, MIDLAND  
Zoning Bylaw Amendment | May 2026

# CONTENTS

|     |  |   |
|-----|--|---|
| 1.0 | Introduction                                       | 3 |
| 2.0 | Site Location                                      | 3 |
| 3.0 | Architectural Design – 2 Storey Towns              | 4 |
| 3.0 | Architectural Design – 3 Storey Towns              | 5 |
| 3.0 | Architectural Design – 3.5 Storey Stacked Towns    | 6 |
| 3.0 | Architectural Design – 3.5 Storey RL Stacked Towns | 7 |
| 3.0 | Architectural Design – Apartment                   | 8 |



Prepared by:

**ORCHARD DESIGN STUDIO INC.**  
1315 Bishop St N, Suite 200  
Cambridge, ON  
N1R 6Z2

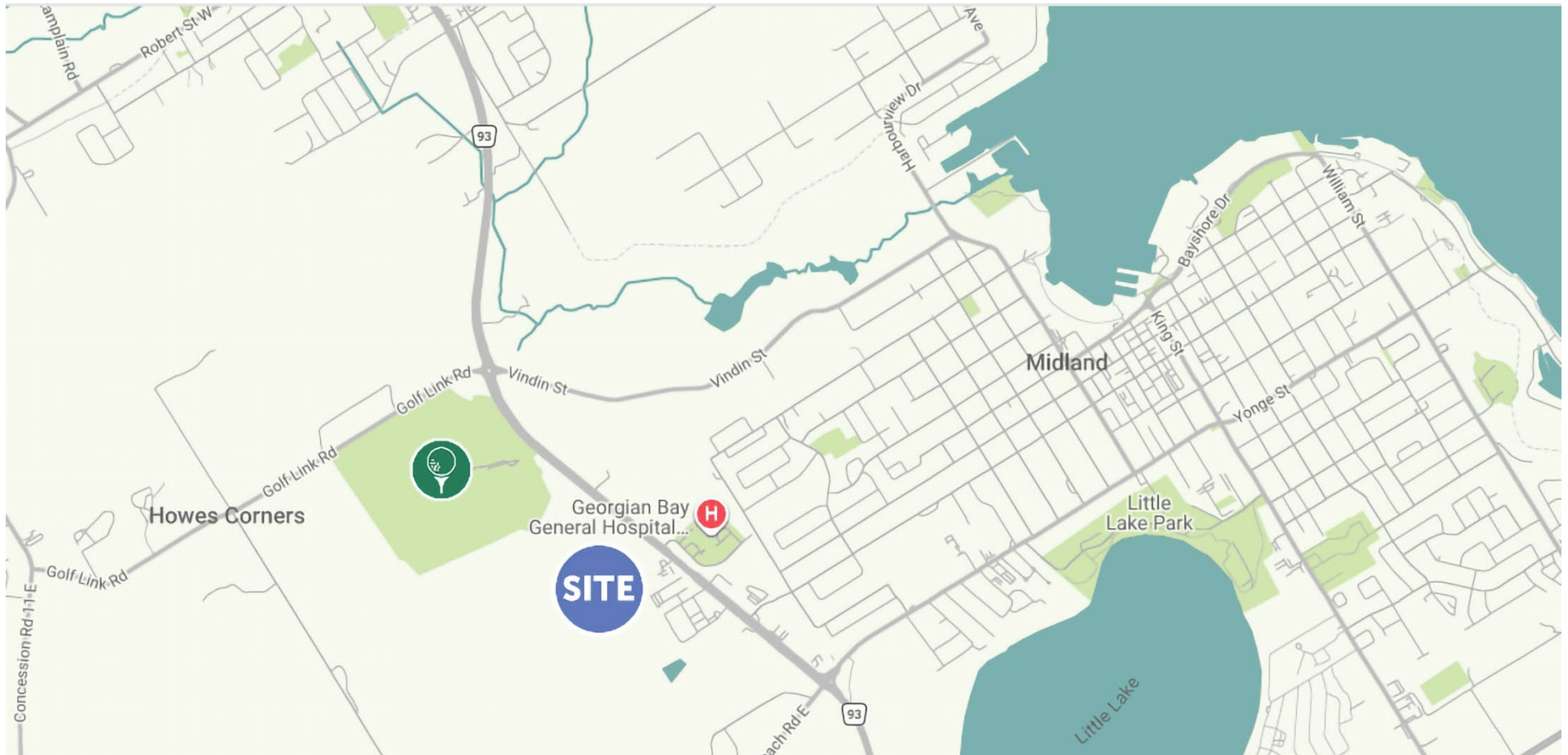


## 1.0 INTRODUCTION

The proposed project contains a total of 1051 residences. These are comprised of 387 residences within 3 6-storey midrise buildings, 55 two storey townhomes, 138 three storey townhomes, 288 - 3.5 storey stacked towns and 138 - 3.5 storey rear lane stacked towns. The blocks are arranged in three to eight unit increments. Most blocks will be located on private streets across each parcel and there will be two storey and 3 storey freehold towns as well. There will be three different elevation styles to help maximize the character of the site including Modern, Scandinavian, and Traditional. The parcels will be linked with a landscaped pathway interconnecting several parks.

## 2.0 SITE LOCATION

The site is located at 9332 Country Road 93 adjacent to the Georgian Bay General Hospital and West of Rona + and the Canadian Super Store.



### 3.0 ARCHITECTURAL DESIGN – 2 STOREY TOWNS



Elevation Style A - Modern

#### Materials

- Brick
- 'Wood Look' Siding
- Aluminum Panel
- Asphalt Shingles



#### Materials

- Brick
- 'Faux Wood' Siding
- Aluminum Panel
- Asphalt Shingles



Elevation Style B - Scandinavian

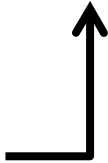
### 3.0 ARCHITECTURAL DESIGN CONTINUED – 3 STOREY TOWNS



Elevation Style A - Modern

Materials

- Brick
- 'Faux Wood' Siding
- Aluminum Panel
- Asphalt Shingles



Elevation Style B – Scandinavian

Materials

- Brick
- 'Faux Wood' Siding
- Aluminum Panel
- Asphalt Shingles



Elevation Style C - Traditional

Materials

- Brick
- Board and Batten Siding
- Horizontal Siding
- Asphalt Shingles



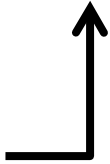
### 3.0 ARCHITECTURAL DESIGN CONTINUED – 3.5 STOREY STACKED TOWNS



Elevation Style A - Modern

Materials

- Brick
- 'Faux Wood' Siding
- Aluminum Panel
- Asphalt Shingles



Materials

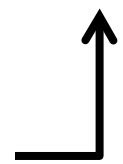
- Brick
- Board and Batten Siding
- Horizontal Siding
- Asphalt Shingles



Elevation B - Scandinavian

Materials

- Brick
- 'Faux Wood' Siding
- Aluminum Panel
- Asphalt Shingles



Elevation Style C - Traditional

### 3.0 ARCHITECTURAL DESIGN CONTINUED – 3.5 STOREY REAR LANE STACKED TOWNS



Elevation Style A - Modern

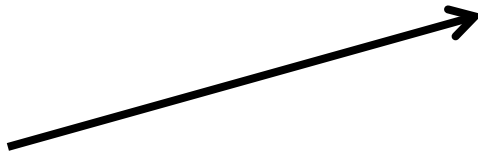
#### Materials

- Brick
- 'Faux Wood' Siding
- Aluminum panel
- Asphalt Shingles



#### Materials

- Brick
- 'Faux Wood' Siding
- Aluminum Panel
- Asphalt Shingles



Elevation Style B - Scandinavian

### 3.0 ARCHITECTURAL DESIGN CONTINUED – 6 STOREY APARTMENT



#### Materials

Brick

'Faux Wood' siding

Aluminum Panel