

C Wehle
Signature

Individual BCIN: 37253

User Defined

Project Information



PINE VALLEY ESTATES
COUNTY ROAD 93 TOWNHOUSES
9332 COUNTY ROAD 93
MIDLAND, ONTARIO

Set Issuance

No.	Date	Description
1	2025.05.07	ISSUED FOR SPA

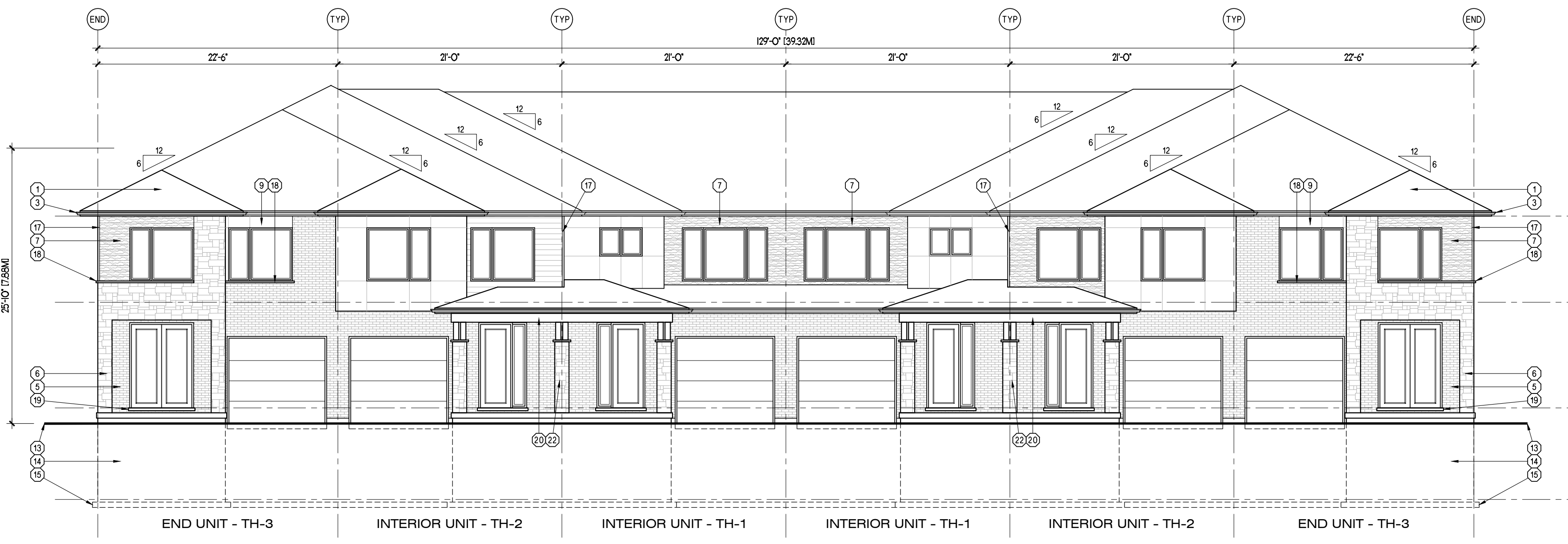
Sheet Information

2 STOREY TOWNS - ELEVATION 'A'

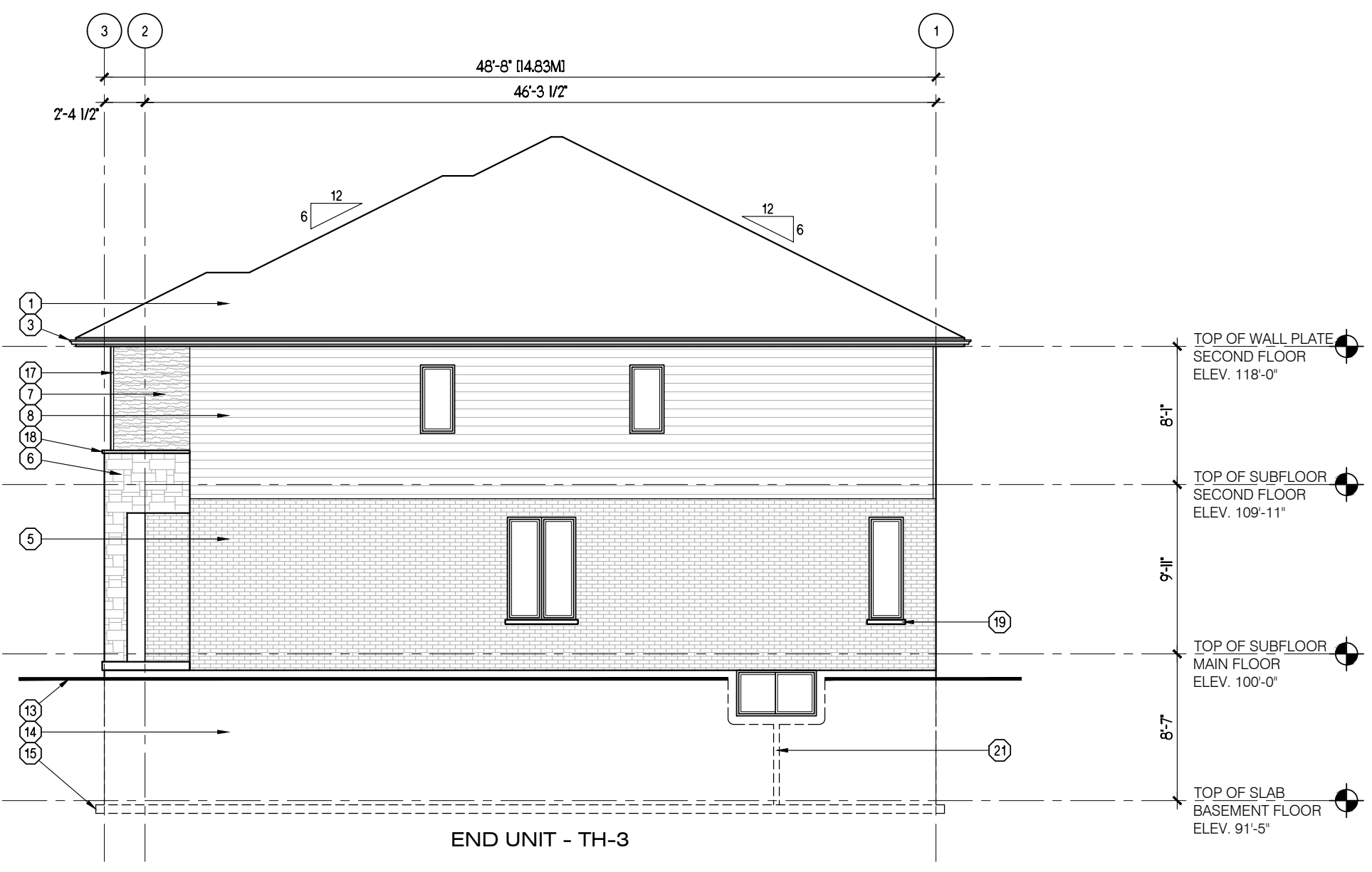
Project No. 16142
Project Start Date: 2025.04.30
File: 2 Storey Towns - Concept.dwg
Drawn by: MGL
Scale: 1/8" = 1'-0"

SPA

A2.01



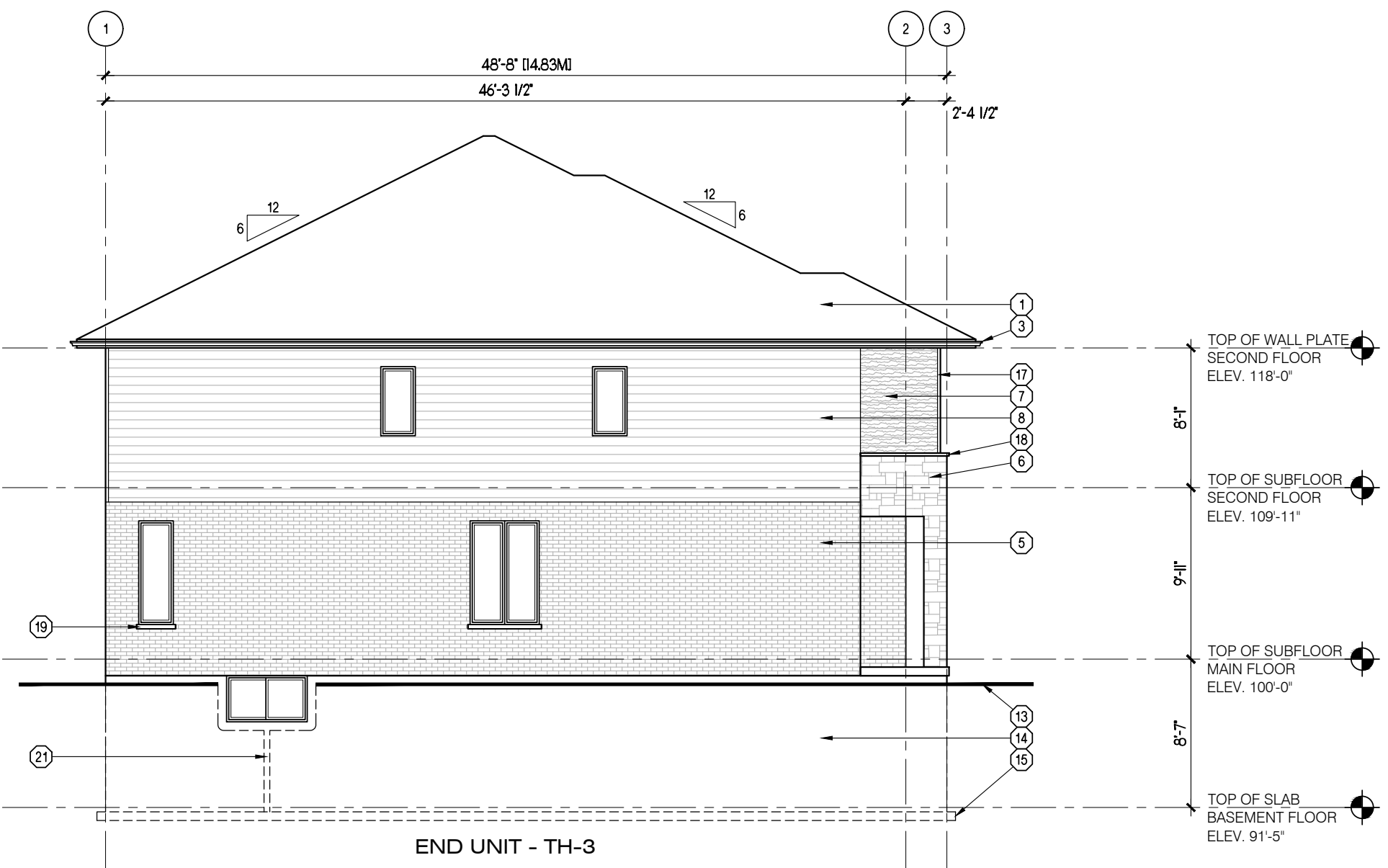
1 FRONT ELEVATION
42/07 1/8" = 1'-0"



2 RIGHT SIDE ELEVATION
42/07 1/8" = 1'-0"



3 REAR ELEVATION
42/07 1/8" = 1'-0"



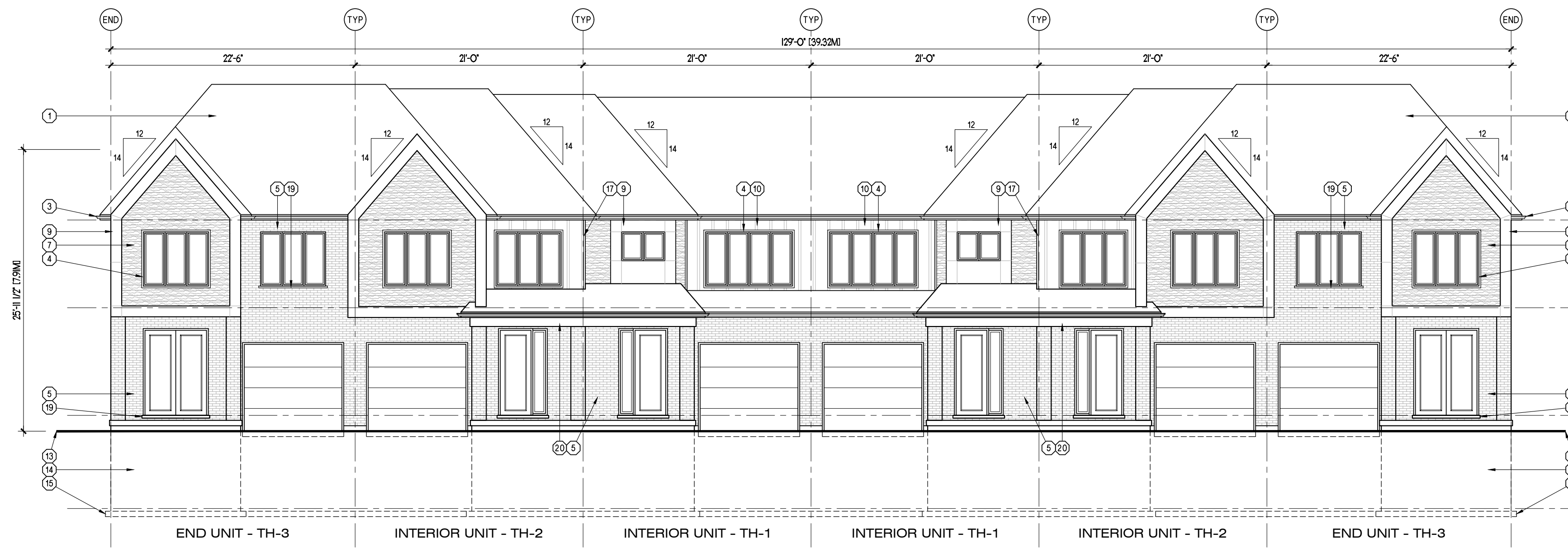
4 LEFT SIDE ELEVATION
42/07 1/8" = 1'-0"

GENERAL NOTES

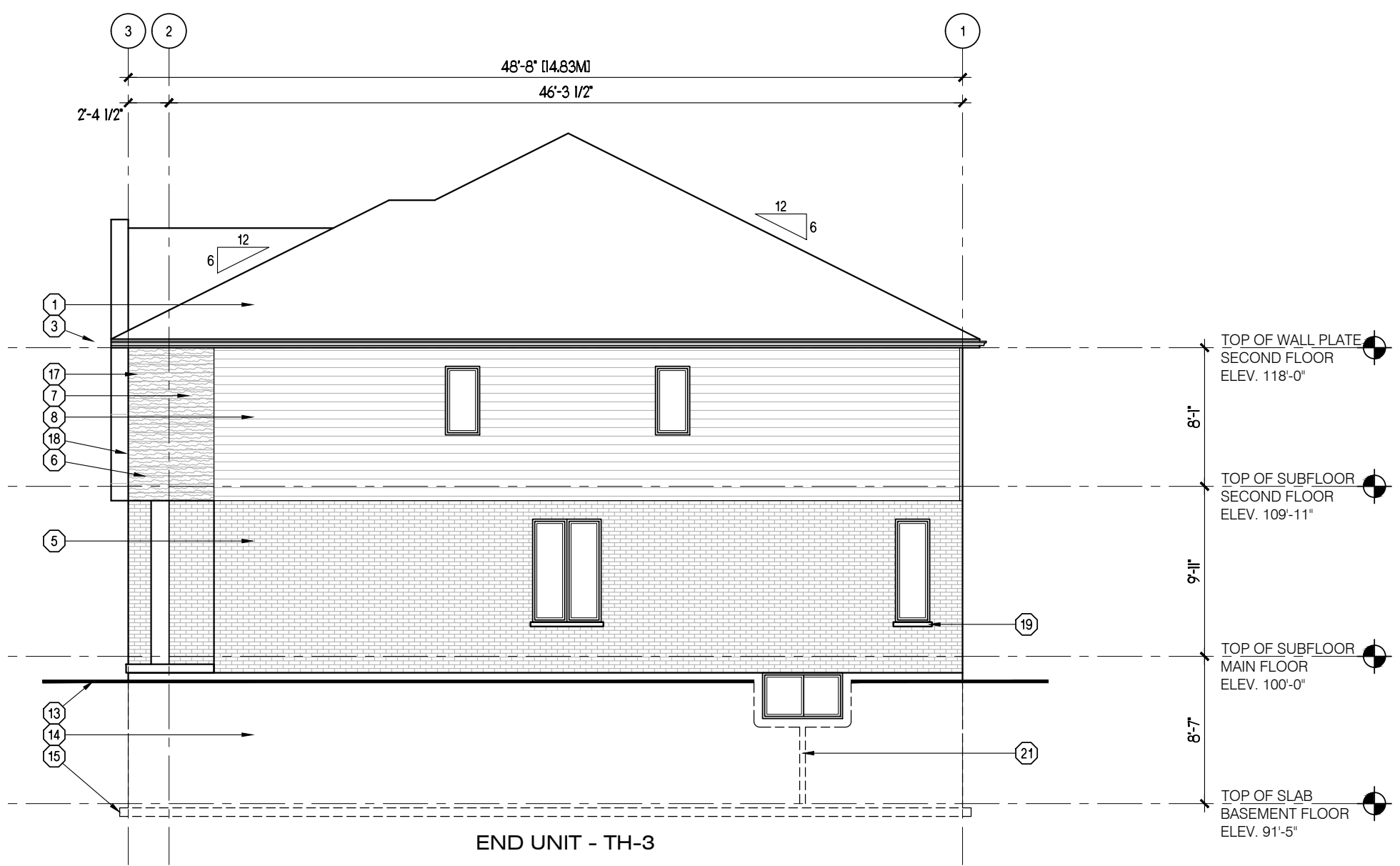
- PROVIDE GUARDS (CONFORMING TO DIV. B, PART 9.8.8 OF THE 2012 O.B.C. AND SB-7 TYPE GUARDS FOR HOUSING AND SMALL BUILDINGS) AT PORCH WHERE DISTANCE FROM PORCH TO GRADE IS 2'-0" OR GREATER.
- FOR WALK-OUT LOTS, STEP FOUNDATION AS REQUIRED FOR PROPOSED GRADES, ENSURING A MAXIMUM 4'-0" OF Laterally UNSUPPORTED WALL.
- WINDOW SIZES SHOWN ARE APPROXIMATE. EXACT ROUGH OPENINGS TO BE DETERMINED BY WINDOW MANUFACTURERS SPECIFICATIONS.
- WHERE PATIO/TERRACE DOOR THRESHOLD IS GREATER THAN 2'-0" ABOVE FINISHED GRADE, PROVIDE SB-7 GUARD OR PROVIDE BLOCKING TO PREVENT DOOR FROM OPENING MORE THAN 4".

MATERIAL LEGEND

- | | | |
|---|---|---|
| ① ASPHALT SHINGLES | ⑩ BOARD AND BATTEN SIDING | ⑲ 3" PRECAST CONCRETE SILL |
| ② 1 1/2" x 3/4" BREAK IN ALUMINUM FASCIA | ⑪ PRECAST CONCRETE ENTRY STEPS (AS REQUIRED BY GRADE) | ⑳ PREFINISHED ALUMINUM PORCH BEAM |
| ③ PREFINISHED ALUMINUM EAVESTROUGH, FASCIA AND SOFFIT | ⑫ PRE-ENGINEERED METAL RAILING AS PER MANUFACTURER | ㉑ GALVANIZED METAL WINDOW WELL (AS REQUIRED DRAIN TO WEeping TIE) |
| ④ PREFINISHED ALUMINUM WINDOW TRIM | ⑬ FINISHED GRADE | ㉒ PREFIN. COLUMN ON 16"x16" STONE PIER |
| ⑤ BRICK VENEER | ⑭ CONCRETE FOUNDATION | |
| ⑥ STONE VENEER | ⑮ CONCRETE FOOTING | |
| ⑦ WOOD GRAIN HORIZONTAL SIDING | ⑯ PREFINISHED ALUMINUM FRIEZE BOARD | |
| ⑧ PREFINISHED HORIZONTAL SIDING | ⑰ PREFINISHED ALUMINUM CORNER TRIM | |
| ⑨ ARCHITECTURAL PANEL SYSTEM | ⑱ CONTINUOUS CONCRETE SILL | |



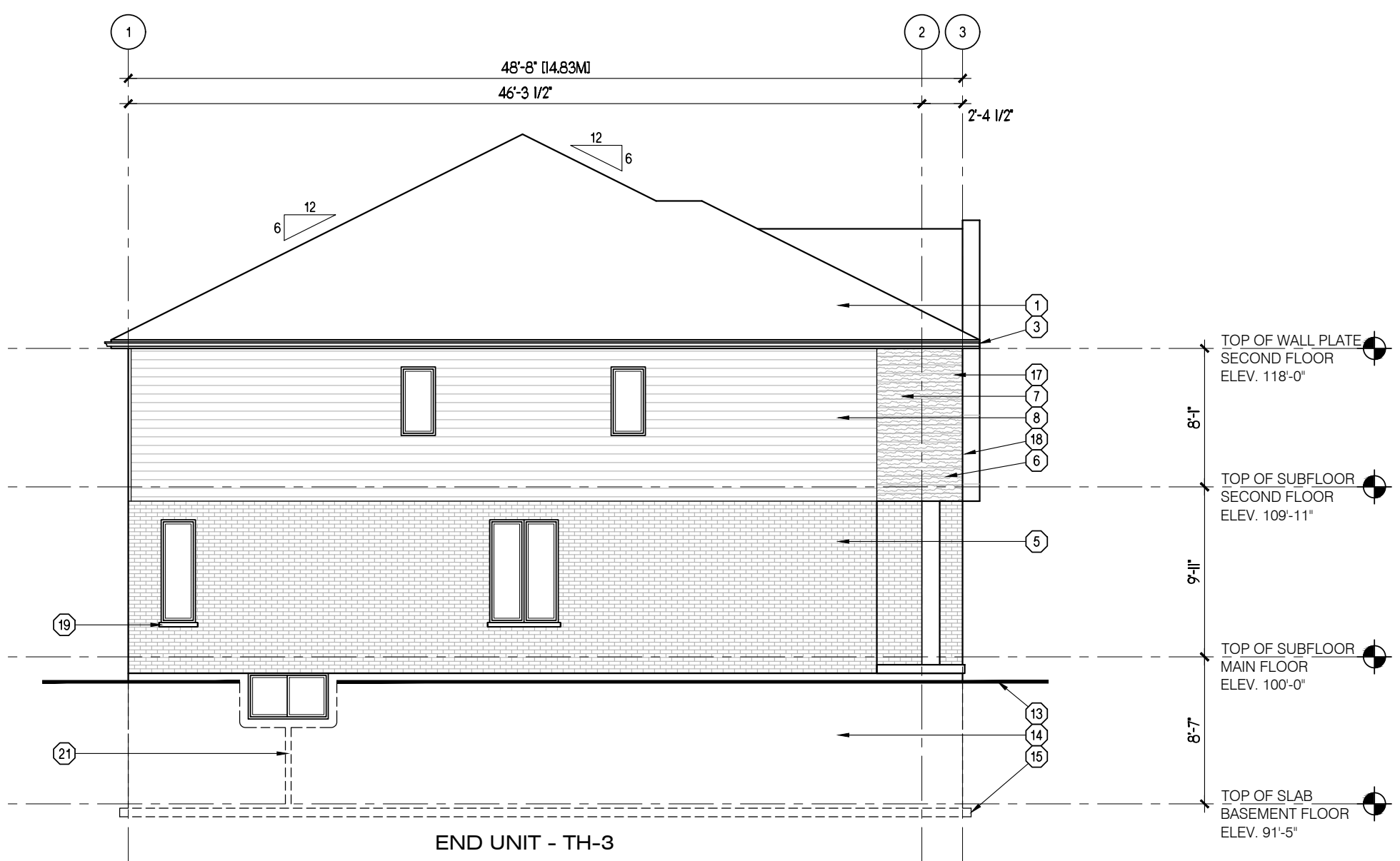
1 FRONT ELEVATION
42.02 1/8" = 1'-0"



2 RIGHT SIDE ELEVATION
42.02 1/8" = 1'-0"



3 REAR ELEVATION
42.02 1/8" = 1'-0"



4 LEFT SIDE ELEVATION
42.02 1/8" = 1'-0"

User Defined

Project Information



PINE VALLEY ESTATES
COUNTY ROAD 93
TOWNHOUSES
9332 COUNTY ROAD 93
MIDLAND, ONTARIO

Set Issuance

No.	Date	Description
1	2025.05.07	ISSUED FOR SPA

Sheet Information

2 STOREY TOWNS
- ELEVATION 'B'

Project No. 16142
Project Start Date: 2025.04.30
File: 2 Storey Towns - Concept.dwg
Drawn by: MGL
Scale: 1/8" = 1'-0"

SPA

A2.02

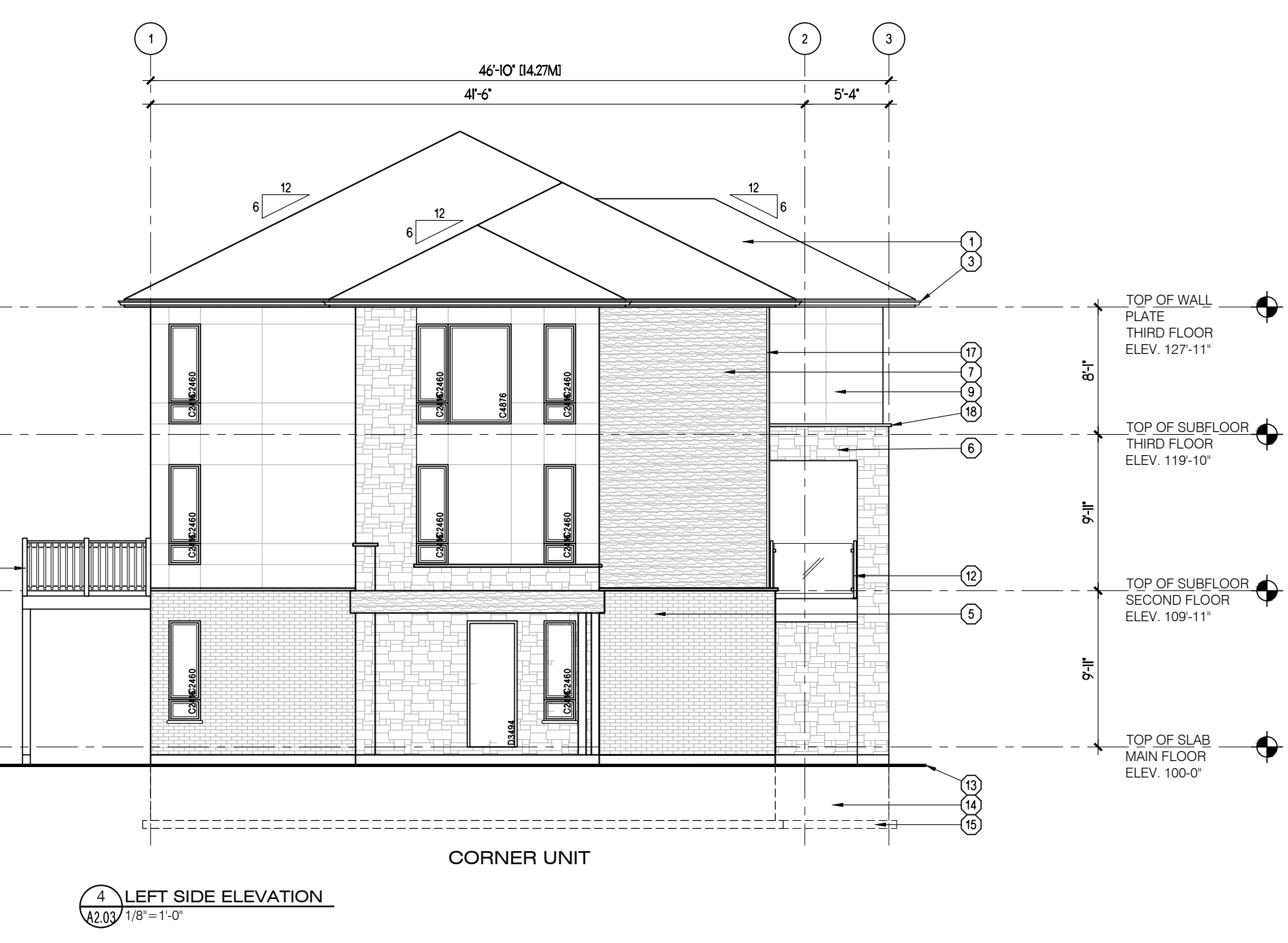
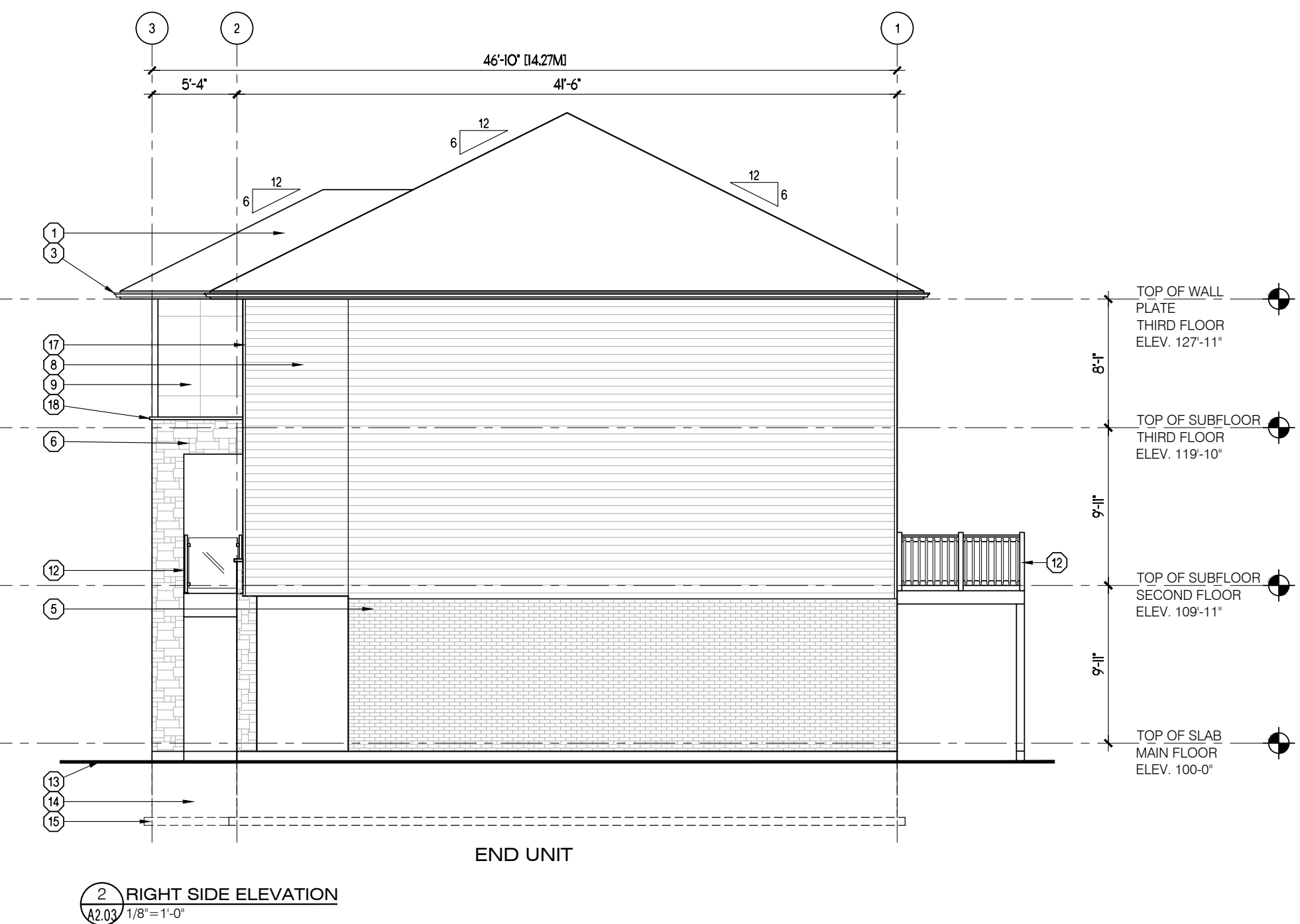
GENERAL NOTES

- PROVIDE GUARDS (CONFORMING TO DIV. B, PART 9.8.8 OF THE 2012 O.B.C. AND SB-7 TYPE GUARDS FOR HOUSING AND SMALL BUILDINGS) AT PORCH WHERE DISTANCE FROM PORCH TO GRADE IS 2'-0" OR GREATER.
- FOR WALK-OUT LOTS, STEP FOUNDATION AS REQUIRED FOR PROPOSED GRADES, ENSURING A MAXIMUM 4'-0" OF Laterally UNSUPPORTED WALL.
- WINDOW SIZES SHOWN ARE APPROXIMATE. EXACT ROUGH OPENINGS TO BE DETERMINED BY WINDOW MANUFACTURERS SPECIFICATIONS.
- WHERE PATIO/TERRACE DOOR THRESHOLD IS GREATER THAN 2'-0" ABOVE FINISHED GRADE, PROVIDE SB-7 GUARD OR PROVIDE BLOCKING TO PREVENT DOOR FROM OPENING MORE THAN 4".

MATERIAL LEGEND

- | | | |
|---|--|--|
| 1 ASPHALT SHINGLES | 10 BOARD AND BATTEN SIDING | 19 3" PRECAST CONCRETE SILL |
| 2 1 1/2" x 3/4" BREAK IN ALUMINUM FASCIA | 11 PRECAST CONCRETE ENTRY STEPS (AS REQUIRED BY GRADE) | 20 PREFINISHED ALUMINUM PORCH BEAM |
| 3 PREFINISHED ALUMINUM EAVESTROUGH, FASCIA AND SOFFIT | 12 PRE-ENGINEERED METAL RAILING AS PER MANUFACTURER | 21 GALVANIZED METAL WINDOW WELL (AS REQUIRED DRAIN TO WEeping TIE) |
| 4 PREFINISHED ALUMINUM WINDOW TRIM | 13 FINISHED GRADE | 22 PREFIN. COLUMN ON 16"x16" STONE PIER |
| 5 BRICK VENEER | 14 CONCRETE FOUNDATION | |
| 6 STONE VENEER | 15 CONCRETE FOOTING | |
| 7 WOOD GRAIN HORIZONTAL SIDING | 16 PREFINISHED ALUMINUM FRIEZE BOARD | |
| 8 PREFINISHED HORIZONTAL SIDING | 17 PREFINISHED ALUMINUM CORNER TRIM | |
| 9 ARCHITECTURAL PANEL SYSTEM | 18 CONTINUOUS CONCRETE SILL | |

No.	Date	Description
1	2025.05.07	ISSUED FOR SPA



GENERAL NOTES

- PROVIDE GUARDS (CONFORMING TO DIV. B, PART 9.8.8 OF THE 2012 O.B.C. AND SB-7 TYPE GUARDS FOR HOUSING AND SMALL BUILDINGS) AT PORCH WHERE DISTANCE FROM PORCH TO GRADE IS 2'-0" OR GREATER.
- FOR WALK-OUT LOTS, STEP FOUNDATION AS REQUIRED FOR PROPOSED GRADES, ENSURING A MAXIMUM 4'-0" OF Laterally UNSUPPORTED WALL.
- WINDOW SIZES SHOWN ARE APPROXIMATE. EXACT ROUGH OPENINGS TO BE DETERMINED BY WINDOW MANUFACTURERS SPECIFICATIONS.
- WHERE PATIO/TERRACE DOOR THRESHOLD IS GREATER THAN 2'-0" ABOVE FINISHED GRADE, PROVIDE SB-7 GUARD OR PROVIDE BLOCKING TO PREVENT DOOR FROM OPENING MORE THAN 4".

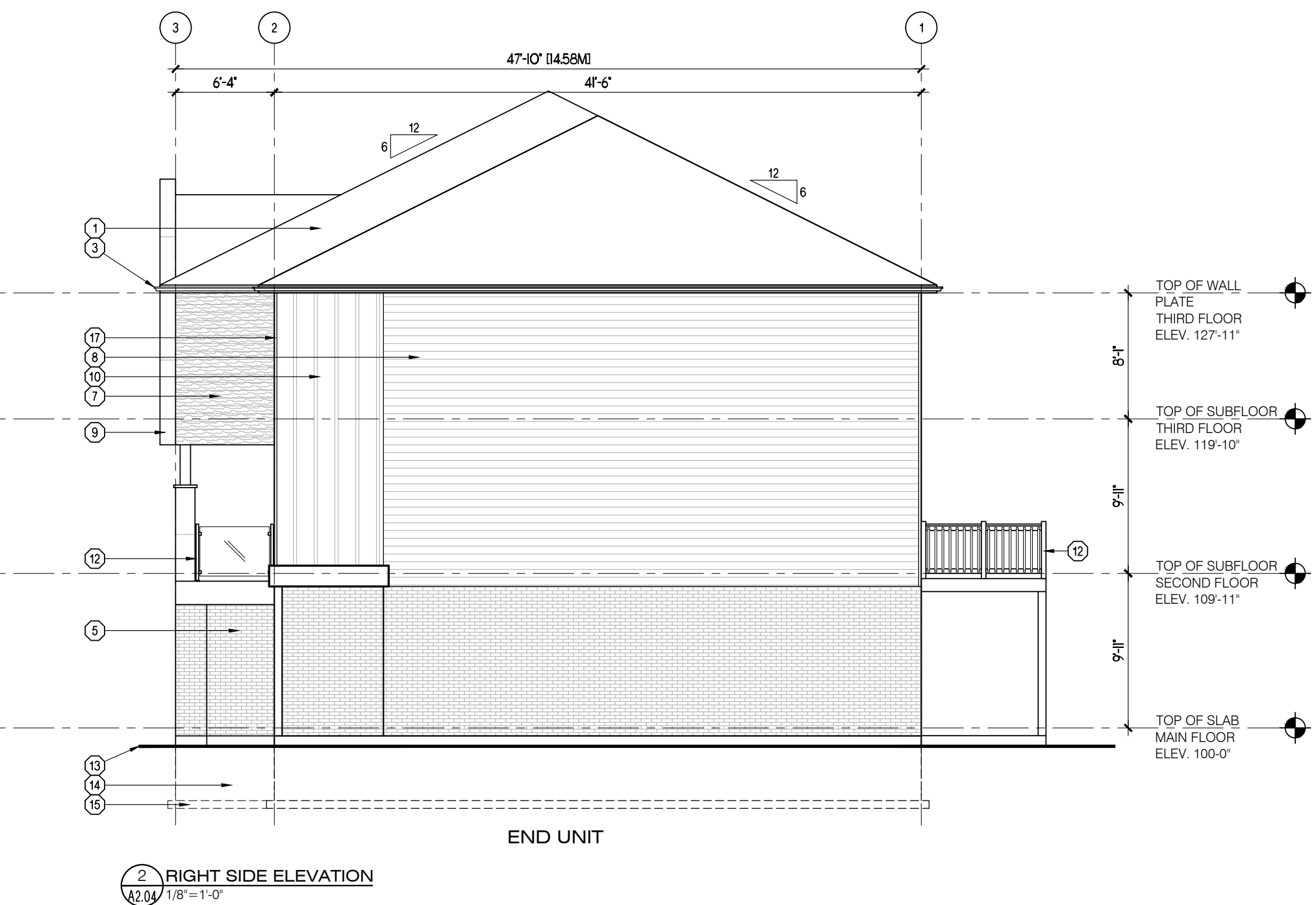
MATERIAL LEGEND

- | | | |
|---|---|---|
| ① ASPHALT SHINGLES | ⑩ BOARD AND BATTEN SIDING | ⑲ 3" PRECAST CONCRETE SILL |
| ② 1 1/2" x 3/4" BREAK IN ALUMINUM FASCIA | ⑪ PRECAST CONCRETE ENTRY STEPS (AS REQUIRED BY GRADE) | ⑳ PREFINISHED ALUMINUM PORCH BEAM |
| ③ PREFINISHED ALUMINUM EAVESTROUGH, FASCIA AND SOFFIT | ⑫ PRE-ENGINEERED METAL RAILING AS PER MANUFACTURER | ㉑ GALVANIZED METAL WINDOW WELL (AS REQUIRED DRAIN TO WEeping LIE) |
| ④ PREFINISHED ALUMINUM WINDOW TRIM | ⑬ FINISHED GRADE | ㉒ ALUMINUM CLAD POST |
| ⑤ BRICK VENEER | ⑭ CONCRETE FOUNDATION | ㉓ GABLE DECORATION |
| ⑥ STONE VENEER | ⑮ CONCRETE FOOTING | |
| ⑦ WOOD GRAIN HORIZONTAL SIDING | ⑯ PREFINISHED ALUMINUM FRIEZE BOARD | |
| ⑧ PREFINISHED HORIZONTAL SIDING | ⑰ PREFINISHED ALUMINUM CORNER TRIM | |
| ⑨ ARCHITECTURAL PANEL SYSTEM | ⑱ CONTINUOUS CONCRETE SILL | |

No.	Date	Description
1	2025.05.07	ISSUED FOR SPA



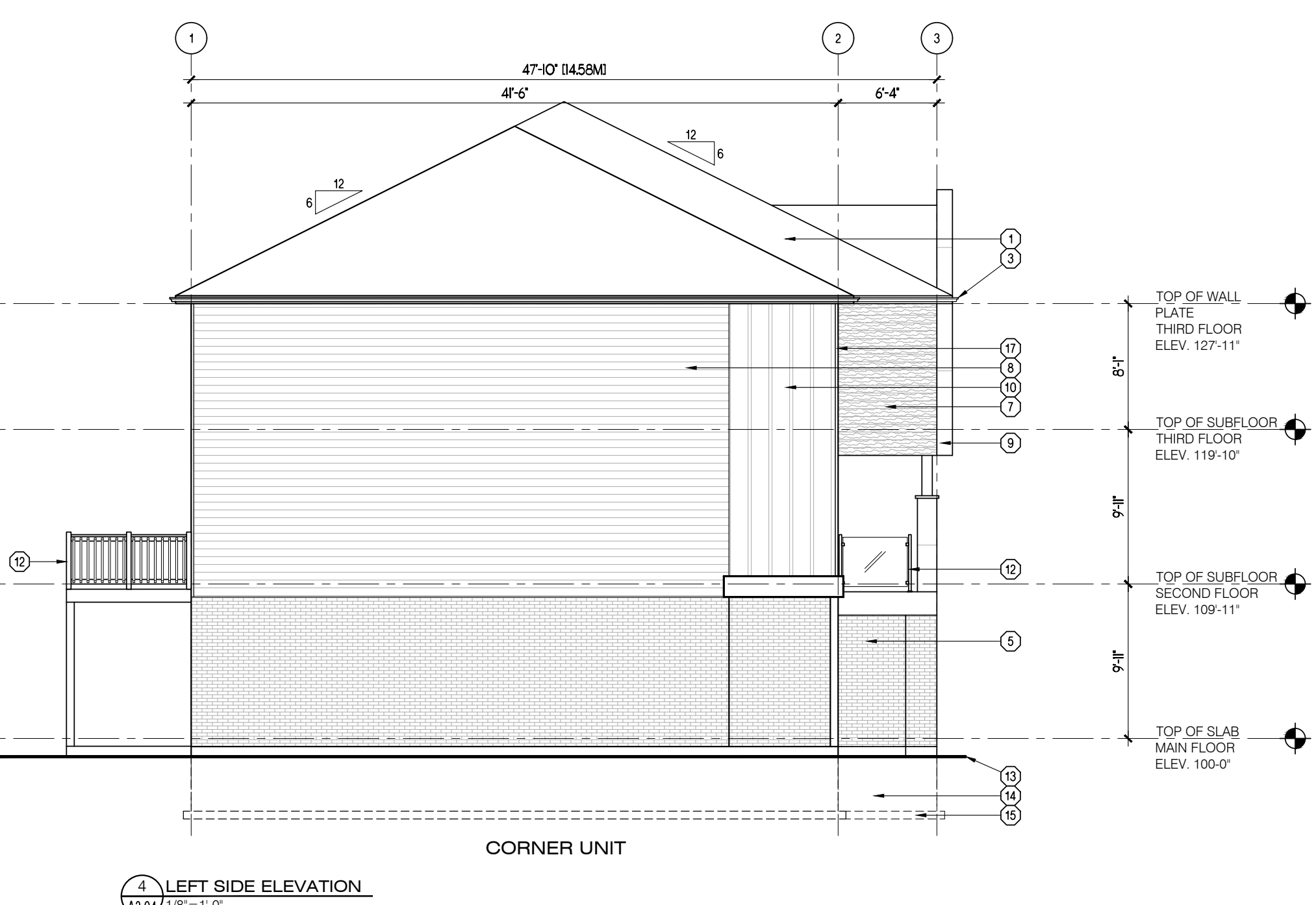
1 FRONT ELEVATION
A2.04 1/8" = 1'-0"



2 RIGHT SIDE ELEVATION
A2.04 1/8" = 1'-0"



3 REAR ELEVATION
A2.04 1/8" = 1'-0"



4 LEFT SIDE ELEVATION
A2.04 1/8" = 1'-0"

GENERAL NOTES

- PROVIDE GUARDS (CONFORMING TO DIV. B, PART 9.8.8 OF THE 2012 O.B.C. AND SB-7 TYPE GUARDS FOR HOUSING AND SMALL BUILDINGS) AT PORCH WHERE DISTANCE FROM PORCH TO GRADE IS 2'-0" OR GREATER.
- FOR WALK-OUT LOTS, STEP FOUNDATION AS REQUIRED FOR PROPOSED GRADES, ENSURING A MAXIMUM 4'-0" OF Laterally UNSUPPORTED WALL.
- WINDOW SIZES SHOWN ARE APPROXIMATE. EXACT ROUGH OPENINGS TO BE DETERMINED BY WINDOW MANUFACTURERS SPECIFICATIONS.
- WHERE PATIO/TERRACE DOOR THRESHOLD IS GREATER THAN 2'-0" ABOVE FINISHED GRADE, PROVIDE SB-7 GUARD OR PROVIDE BLOCKING TO PREVENT DOOR FROM OPENING MORE THAN 4".

MATERIAL LEGEND

- | | | |
|---|---|---|
| ① ASPHALT SHINGLES | ⑩ BOARD AND BATTEN SIDING | ⑲ 3" PRECAST CONCRETE SILL |
| ② 1 1/2" x 3/4" BREAK IN ALUMINUM FASCIA | ⑪ PRECAST CONCRETE ENTRY STEPS (AS REQUIRED BY GRADE) | ⑳ PREFINISHED ALUMINUM PORCH BEAM |
| ③ PREFINISHED ALUMINUM EAVESTROUGH, FASCIA AND SOFFIT | ⑫ PRE-ENGINEERED METAL RAILING AS PER MANUFACTURER | ㉑ GALVANIZED METAL WINDOW WELL (AS REQUIRED DRAIN TO WEeping LIE) |
| ④ PREFINISHED ALUMINUM WINDOW TRIM | ⑬ FINISHED GRADE | ㉒ ALUMINUM CLAD POST |
| ⑤ BRICK VENEER | ⑭ CONCRETE FOUNDATION | ㉓ GABLE DECORATION |
| ⑥ STONE VENEER | ⑮ CONCRETE FOOTING | |
| ⑦ WOOD GRAIN HORIZONTAL SIDING | ⑯ PREFINISHED ALUMINUM FRIEZE BOARD | |
| ⑧ PREFINISHED HORIZONTAL SIDING | ⑰ PREFINISHED ALUMINUM CORNER TRIM | |
| ⑨ ARCHITECTURAL PANEL SYSTEM | ⑱ CONTINUOUS CONCRETE SILL | |

C. Wehle

Signature Individual BCIN: 37253

User Defined

Project Information



PINE VALLEY ESTATES
COUNTY ROAD 93
TOWNHOUSES
9332 COUNTY ROAD 93
MIDLAND, ONTARIO

Set Issuance

No.	Date	Description
1	2025.05.07	ISSUED FOR SPA

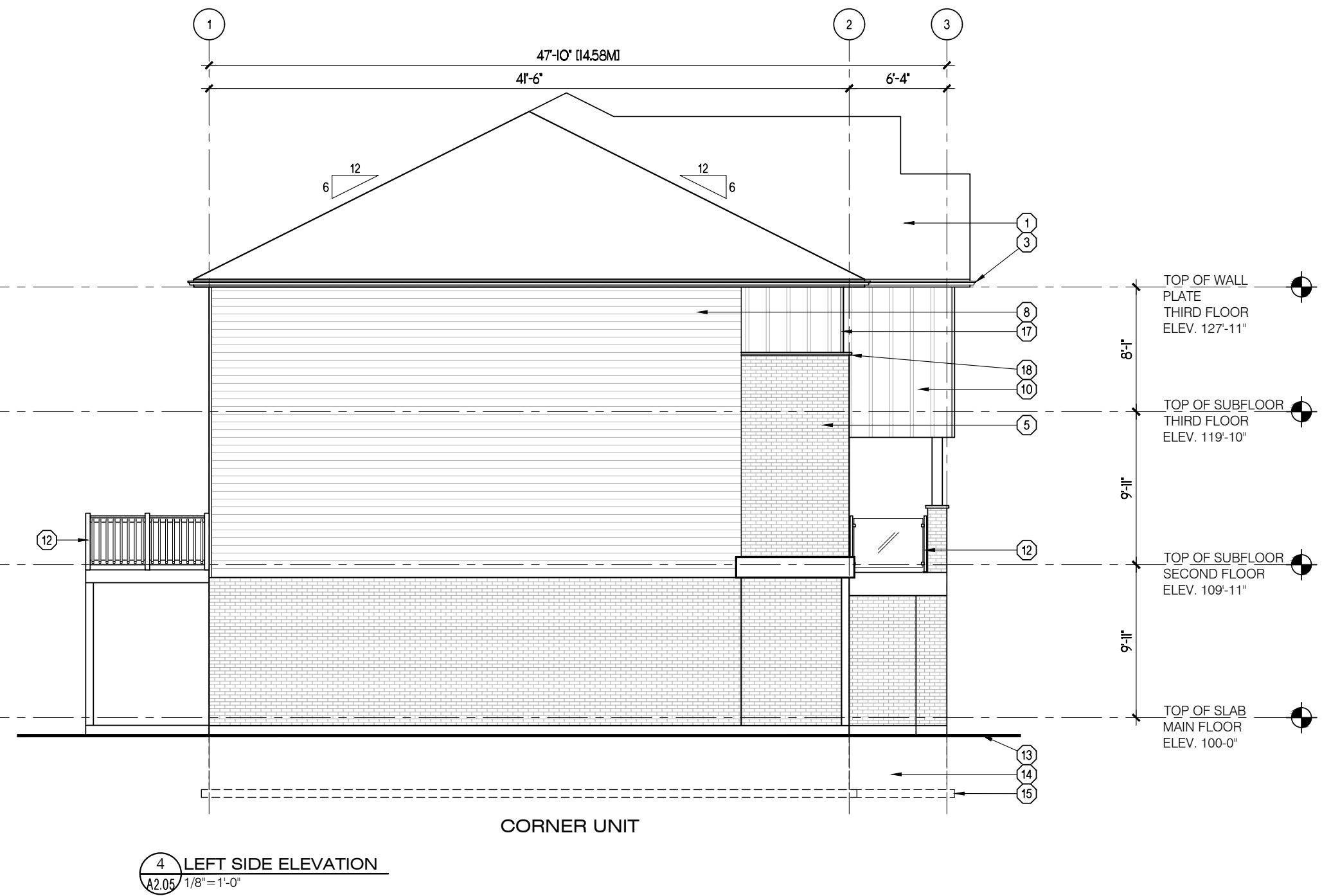
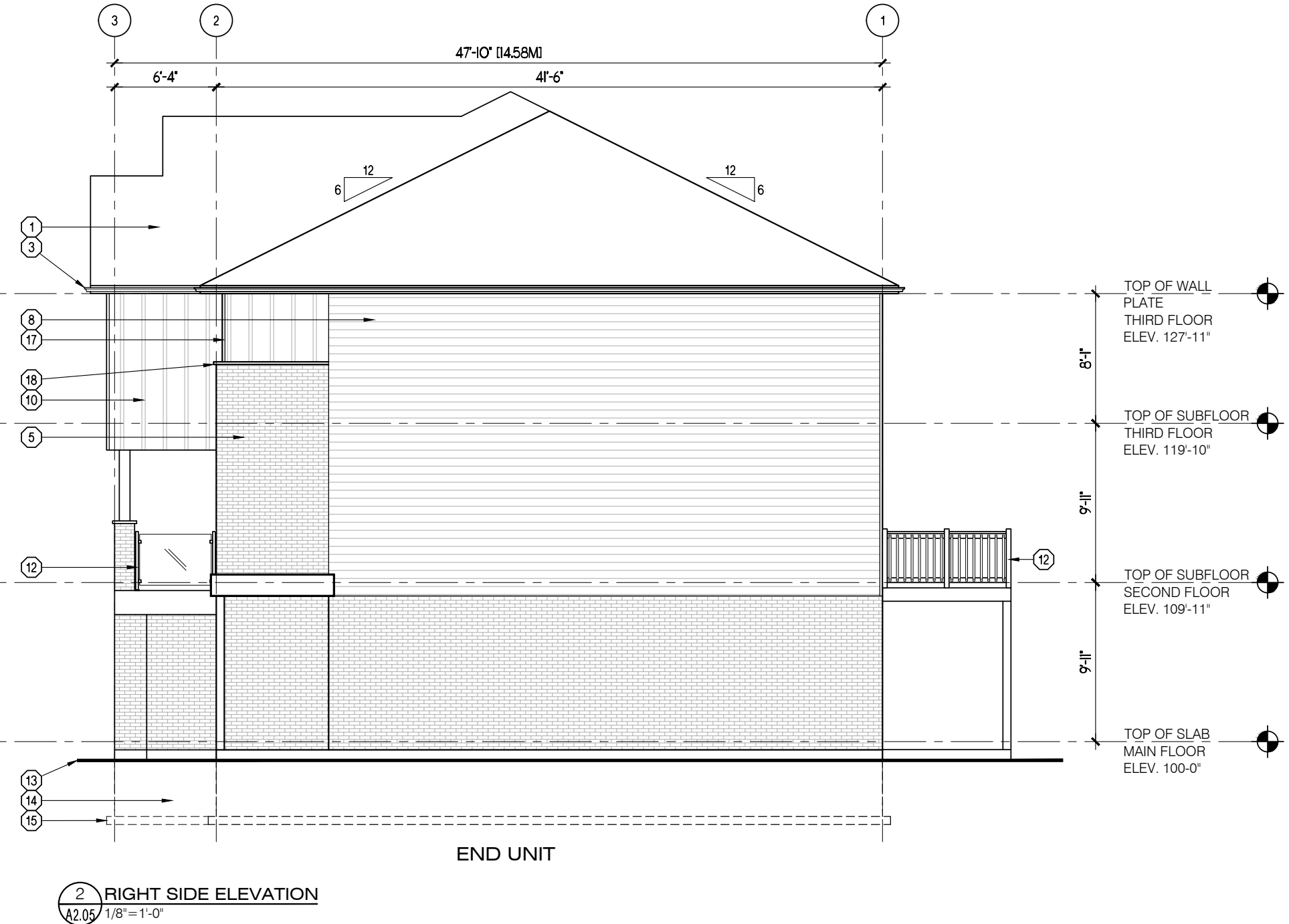
Sheet Information

3 STOREY TOWNS
- ELEVATION 'C'

Project No. 16142
Project Start Date: 2025.04.30
File: 3 Storey Towns - Concept.dwg
Drawn by: MGL
Scale: 1/8" = 1'-0"

SPA

A2.05



GENERAL NOTES

1. PROVIDE GUARDS (CONFORMING TO DIV. B, PART 9.8.8 OF THE 2012 O.B.C. AND SB-7 TYPE GUARDS FOR HOUSING AND SMALL BUILDINGS) AT PORCH WHERE DISTANCE FROM PORCH TO GRADE IS 2'-0" OR GREATER.
2. FOR WALK-OUT LOTS, STEP FOUNDATION AS REQUIRED FOR PROPOSED GRADES, ENSURING A MAXIMUM 4'-0" OF Laterally UNSUPPORTED WALL.
3. WINDOW SIZES SHOWN ARE APPROXIMATE. EXACT ROUGH OPENINGS TO BE DETERMINED BY WINDOW MANUFACTURERS SPECIFICATIONS.
4. WHERE PATIO/TERRACE DOOR THRESHOLD IS GREATER THAN 2'-0" ABOVE FINISHED GRADE, PROVIDE SB-7 GUARD OR PROVIDE BLOCKING TO PREVENT DOOR FROM OPENING MORE THAN 4".

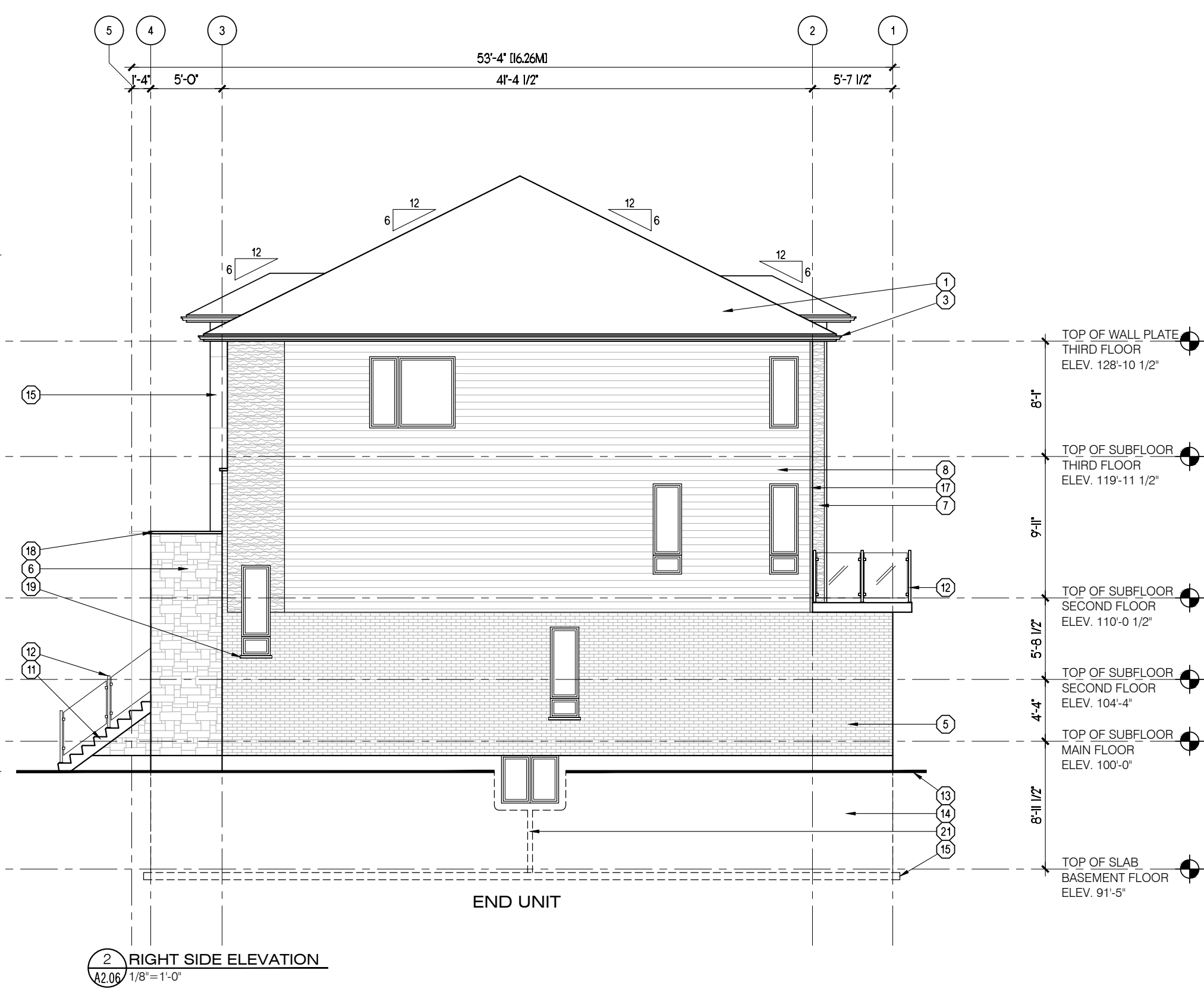
MATERIAL LEGEND

- | | | |
|---|---|---|
| ① ASPHALT SHINGLES | ⑩ BOARD AND BATTEN SIDING | ⑲ 3" PRECAST CONCRETE SILL |
| ② 1 1/2" x 3/4" BREAK IN ALUMINUM FASCIA | ⑪ PRECAST CONCRETE ENTRY STEPS (AS REQUIRED BY GRADE) | ⑳ PREFINISHED ALUMINUM PORCH BEAM |
| ③ PREFINISHED ALUMINUM EAVESTROUGH, FASCIA AND SOFFIT | ⑫ PRE-ENGINEERED METAL RAILING AS PER MANUFACTURER | ㉑ GALVANIZED METAL WINDOW WELL (AS REQUIRED DRAIN TO WEeping TIE) |
| ④ PREFINISHED ALUMINUM WINDOW TRIM | ⑬ FINISHED GRADE | ㉒ ALUMINUM CLAD POST |
| ⑤ BRICK VENEER | ⑭ CONCRETE FOUNDATION | ㉓ GABLE DECORATION |
| ⑥ STONE VENEER | ⑮ CONCRETE FOOTING | |
| ⑦ WOOD GRAIN HORIZONTAL SIDING | ⑯ PREFINISHED ALUMINUM FRIEZE BOARD | |
| ⑧ PREFINISHED HORIZONTAL SIDING | ⑰ PREFINISHED ALUMINUM CORNER TRIM | |
| ⑨ ARCHITECTURAL PANEL SYSTEM | ⑱ CONTINUOUS CONCRETE SILL | |

No.	Date	Description
1	2025.05.07	ISSUED FOR SPA



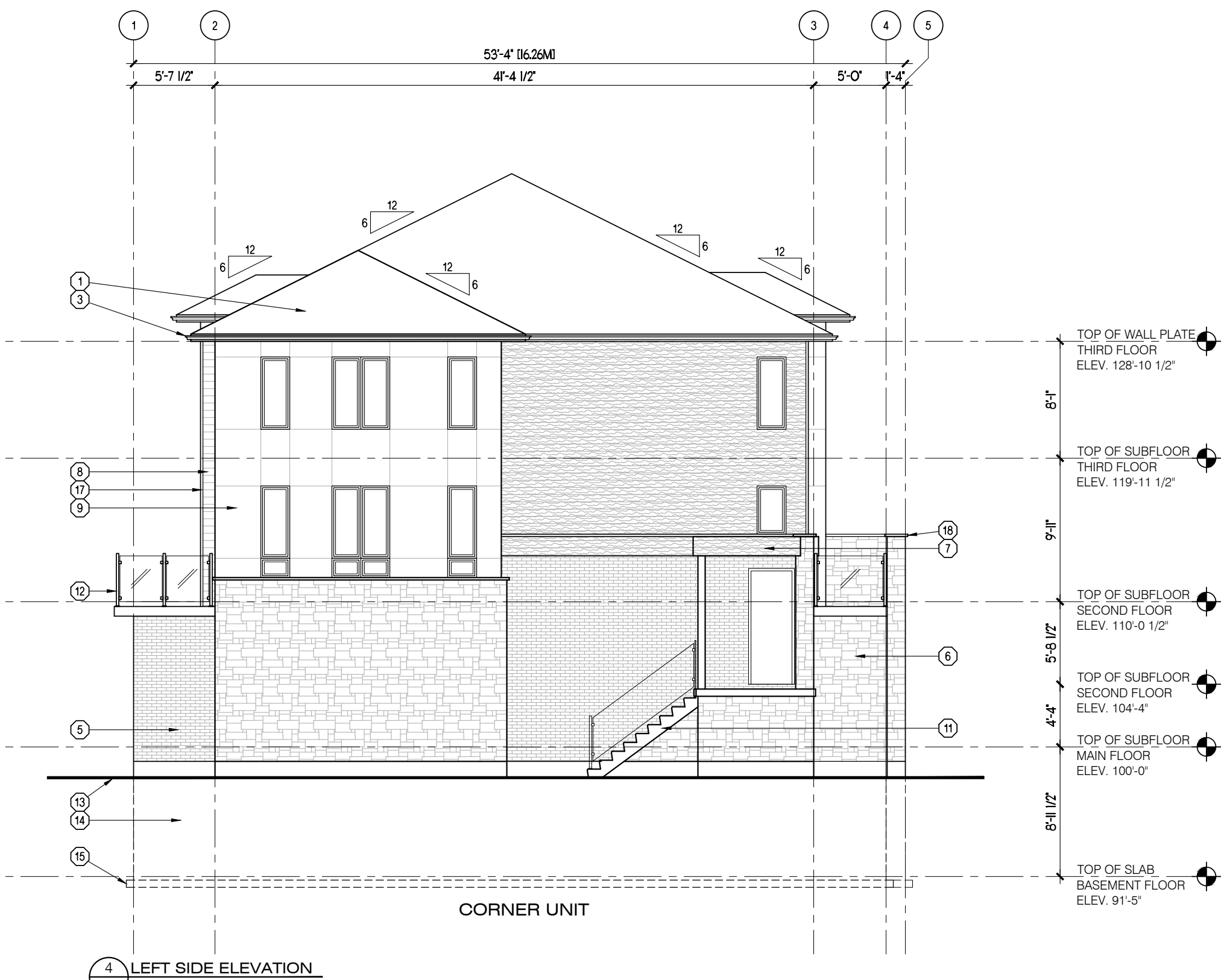
1 FRONT ELEVATION
1/2" = 1'-0"



2 RIGHT SIDE ELEVATION
1/2" = 1'-0"



3 REAR ELEVATION
1/2" = 1'-0"



4 LEFT SIDE ELEVATION
1/2" = 1'-0"

GENERAL NOTES

- PROVIDE GUARDS (CONFORMING TO DIV. B, PART 9.8.8 OF THE 2012 O.B.C. AND SB-7 TYPE GUARDS FOR HOUSING AND SMALL BUILDINGS) AT PORCH WHERE DISTANCE FROM PORCH TO GRADE IS 2'-0" OR GREATER.
- FOR WALK-OUT LOTS, STEP FOUNDATION AS REQUIRED FOR PROPOSED GRADES, ENSURING A MAXIMUM 4'-0" OF Laterally UNSUPPORTED WALL.
- WINDOW SIZES SHOWN ARE APPROXIMATE. EXACT ROUGH OPENINGS TO BE DETERMINED BY WINDOW MANUFACTURERS SPECIFICATIONS.
- WHERE PATIO/TERRACE DOOR THRESHOLD IS GREATER THAN 2'-0" ABOVE FINISHED GRADE, PROVIDE SB-7 GUARD OR PROVIDE BLOCKING TO PREVENT DOOR FROM OPENING MORE THAN 4".

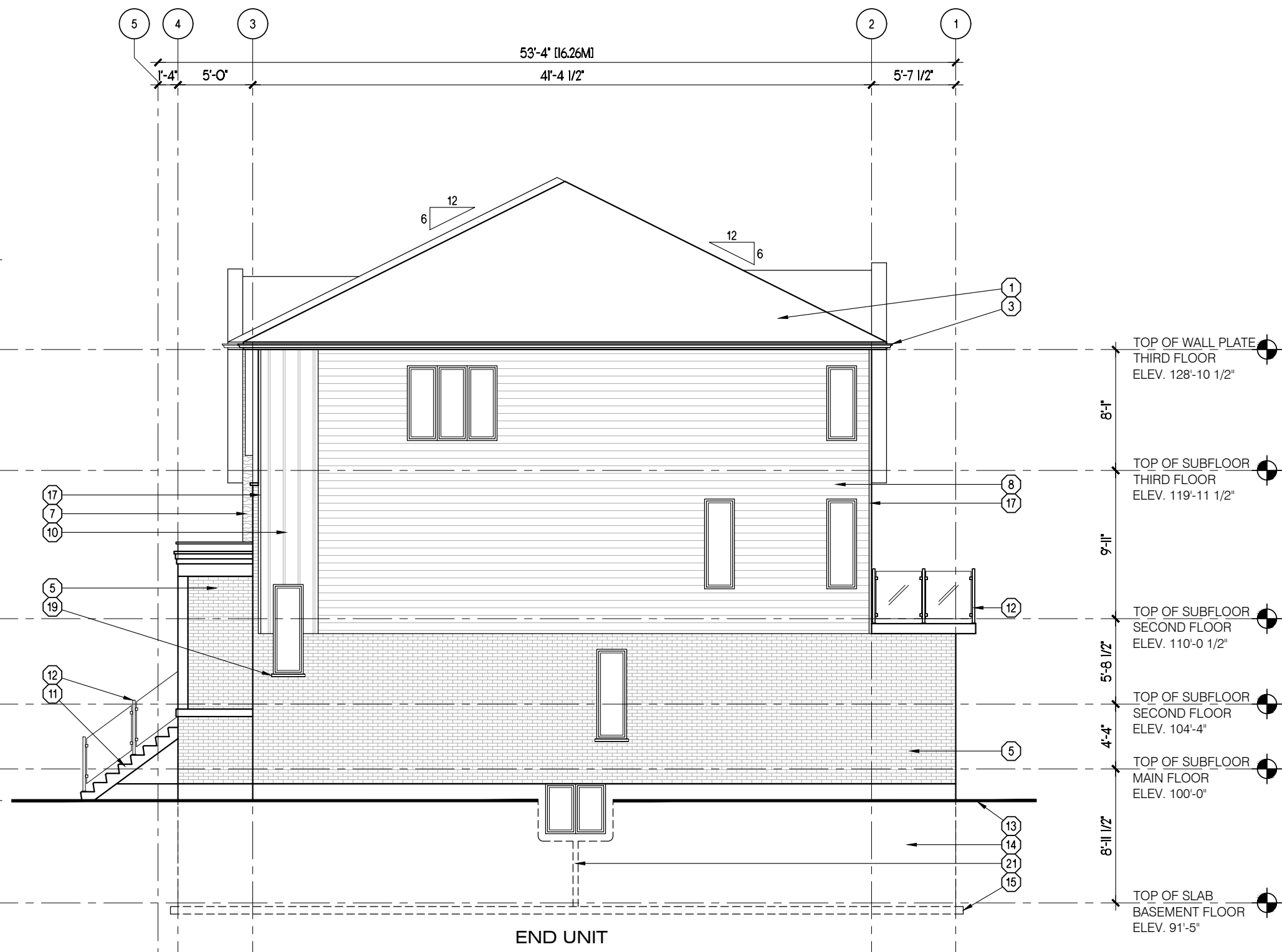
MATERIAL LEGEND

- | | | |
|---|--|--|
| 1 ASPHALT SHINGLES | 11 BOARD AND BATTEN SIDING | 19 3" PRECAST CONCRETE SILL |
| 2 1 1/2" x 3/4" BREAK IN ALUMINUM FASCIA | 12 PRECAST CONCRETE ENTRY STEPS (AS REQUIRED BY GRADE) | 20 PREFINISHED ALUMINUM PORCH BEAM |
| 3 PREFINISHED ALUMINUM EAVESTROUGH, FASCIA AND SOFFIT | 13 PRE-ENGINEERED METAL RAILING AS PER MANUFACTURER | 21 GALVANIZED METAL WINDOW WELL (AS REQUIRED DRAIN TO WEeping TIE) |
| 4 PREFINISHED ALUMINUM WINDOW TRIM | 14 FINISHED GRADE | 22 ALUMINUM CLAD POST |
| 5 BRICK VENEER | 15 CONCRETE FOUNDATION | |
| 6 STONE VENEER | 16 CONCRETE FOOTING | |
| 7 WOOD GRAIN HORIZONTAL SIDING | 17 PREFINISHED ALUMINUM FRIEZE BOARD | |
| 8 PREFINISHED HORIZONTAL SIDING | 18 PREFINISHED ALUMINUM CORNER TRIM | |
| 9 ARCHITECTURAL PANEL SYSTEM | 19 CONTINUOUS CONCRETE SILL | |

No.	Date	Description
1	2025.05.07	ISSUED FOR SPA



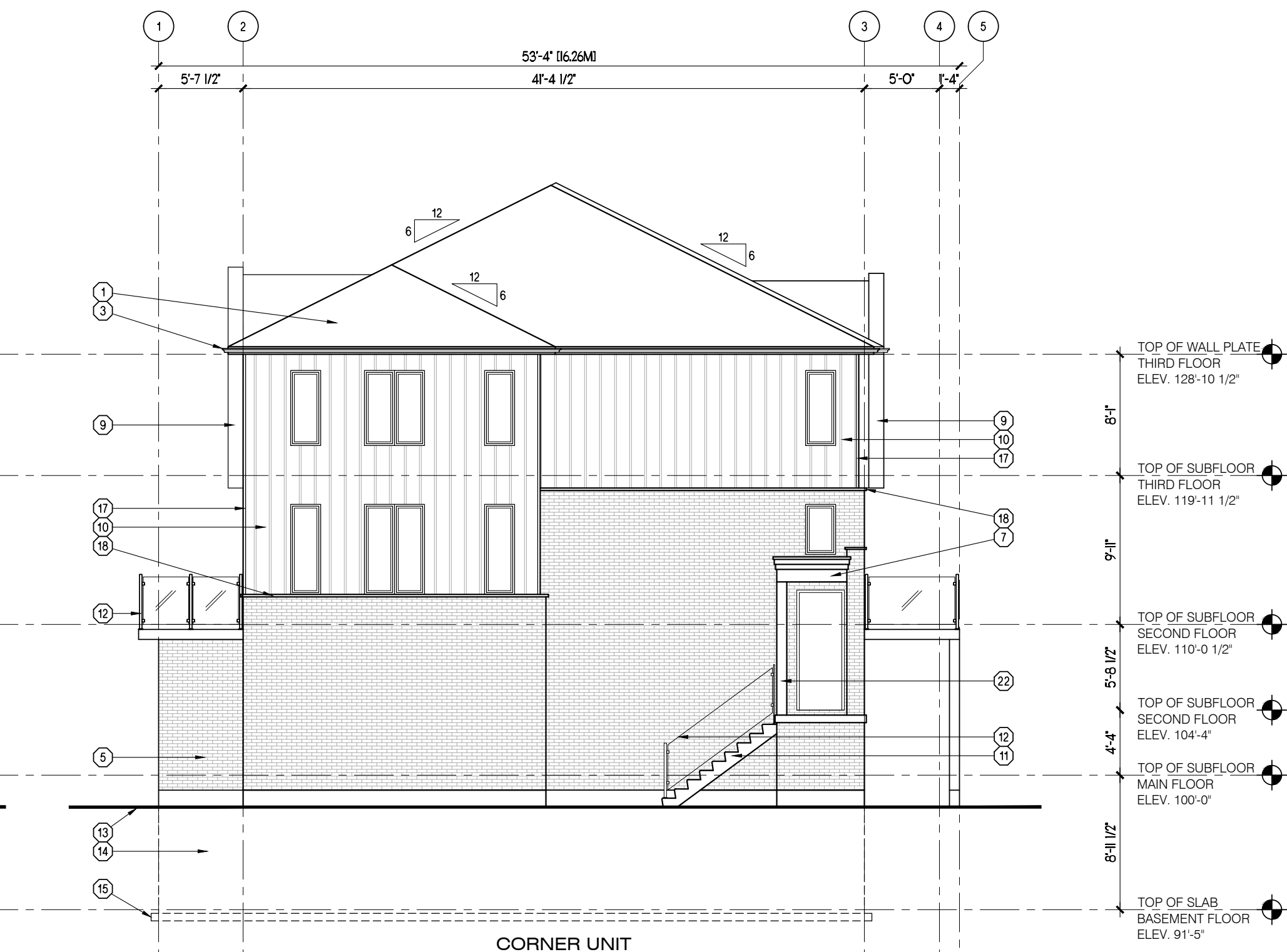
1 FRONT ELEVATION
A2.07 1/8" = 1'-0"



2 RIGHT SIDE ELEVATION
A2.07 1/8" = 1'-0"



3 REAR ELEVATION
A2.07 1/8" = 1'-0"



4 LEFT SIDE ELEVATION
A2.07 1/8" = 1'-0"

GENERAL NOTES

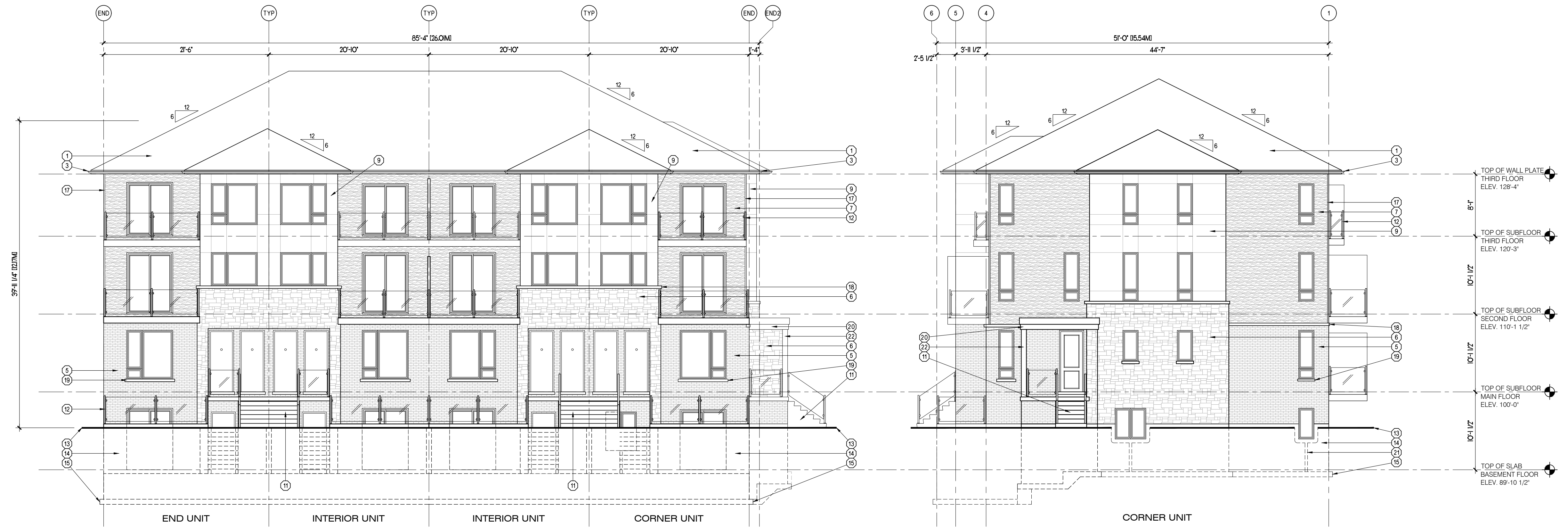
- PROVIDE GUARDS (CONFORMING TO DIV. B, PART 9.8.8 OF THE 2012 O.B.C. AND SB-7 TYPE GUARDS FOR HOUSING AND SMALL BUILDINGS) AT PORCH WHERE DISTANCE FROM PORCH TO GRADE IS 2'-0" OR GREATER.
- FOR WALK-OUT LOTS, STEP FOUNDATION AS REQUIRED FOR PROPOSED GRADES, ENSURING A MAXIMUM 4'-0" OF Laterally UNSUPPORTED WALL.
- WINDOW SIZES SHOWN ARE APPROXIMATE. EXACT ROUGH OPENINGS TO BE DETERMINED BY WINDOW MANUFACTURERS SPECIFICATIONS.
- WHERE PATIO/TERRACE DOOR THRESHOLD IS GREATER THAN 2'-0" ABOVE FINISHED GRADE, PROVIDE SB-7 GUARD OR PROVIDE BLOCKING TO PREVENT DOOR FROM OPENING MORE THAN 4".

MATERIAL LEGEND

- | | | |
|---|--|--|
| 1 ASPHALT SHINGLES | 10 BOARD AND BATTEN SIDING | 19 3" PRECAST CONCRETE SILL |
| 2 1 1/2" x 3/4" BREAK IN ALUMINUM FASCIA | 11 PRECAST CONCRETE ENTRY STEPS (AS REQUIRED BY GRADE) | 20 PREFINISHED ALUMINUM PORCH BEAM |
| 3 PREFINISHED ALUMINUM EAVESTROUGH, FASCIA AND SOFFIT | 12 PRE-ENGINEERED METAL RAILING AS PER MANUFACTURER | 21 GALVANIZED METAL WINDOW WELL (AS REQUIRED DRAIN TO WEeping TIE) |
| 4 PREFINISHED ALUMINUM WINDOW TRIM | 13 FINISHED GRADE | 22 ALUMINUM CLAD POST |
| 5 BRICK VENEER | 14 CONCRETE FOUNDATION | |
| 6 STONE VENEER | 15 CONCRETE FOOTING | |
| 7 WOOD GRAIN HORIZONTAL SIDING | 16 PREFINISHED ALUMINUM FRIEZE BOARD | |
| 8 PREFINISHED HORIZONTAL SIDING | 17 PREFINISHED ALUMINUM CORNER TRIM | |
| 9 ARCHITECTURAL PANEL SYSTEM | 18 CONTINUOUS CONCRETE SILL | |



No.	Date	Description
1	2025.05.07	ISSUED FOR SPA



1 FRONT ELEVATION
A2.08 1/8" = 1'-0"

2 RIGHT SIDE ELEVATION
A2.08 1/8" = 1'-0"

3 REAR ELEVATION
A2.08 1/8" = 1'-0"

4 LEFT SIDE ELEVATION
A2.08 1/8" = 1'-0"

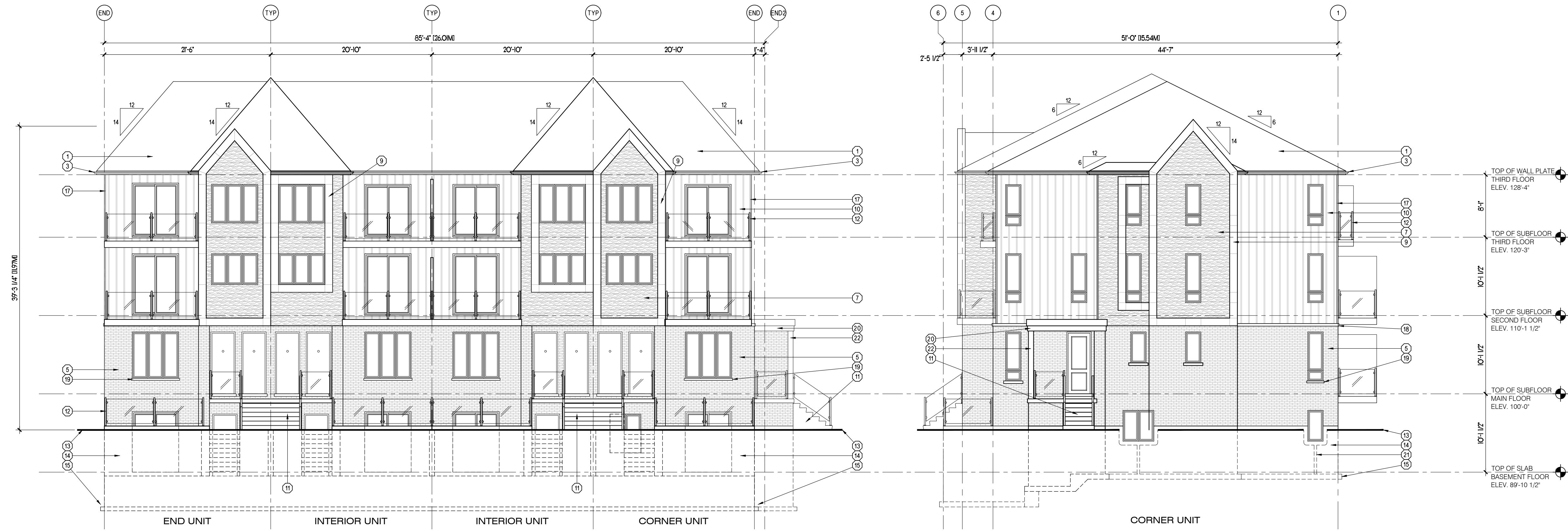
GENERAL NOTES

- PROVIDE GUARDS (CONFORMING TO DIV. B, PART 9.8.8 OF THE 2012 O.B.C. AND SB-7 TYPE GUARDS FOR HOUSING AND SMALL BUILDINGS) AT PORCH WHERE DISTANCE FROM PORCH TO GRADE IS 2'-0" OR GREATER.
- FOR WALK-OUT LOTS, STEP FOUNDATION AS REQUIRED FOR PROPOSED GRADES, ENSURING A MAXIMUM 4'-0" OF Laterally UNSUPPORTED WALL.
- WINDOW SIZES SHOWN ARE APPROXIMATE. EXACT ROUGH OPENINGS TO BE DETERMINED BY WINDOW MANUFACTURERS SPECIFICATIONS.
- WHERE PATIO/TERRACE DOOR THRESHOLD IS GREATER THAN 2'-0" ABOVE FINISHED GRADE, PROVIDE SB-7 GUARD OR PROVIDE BLOCKING TO PREVENT DOOR FROM OPENING MORE THAN 4".

MATERIAL LEGEND

- | | | |
|---|--|---|
| 1 ASPHALT SHINGLES | 10 BOARD AND BATTEN SIDING | 19 3" PRECAST CONCRETE SILL |
| 2 1 1/2" x 3/4" BREAK IN ALUMINUM FASCIA | 11 PRECAST CONCRETE ENTRY STEPS (AS REQUIRED BY GRADE) | 20 PREFINISHED ALUMINUM PORCH BEAM |
| 3 PREFINISHED ALUMINUM EAVESTROUGH, FASCIA AND SOFFIT | 12 PRE-ENGINEERED METAL RAILING AS PER MANUFACTURER | 21 GALVANIZED METAL WINDOW WELL (AS REQUIRED DRAIN TO WEEPING TILT) |
| 4 PREFINISHED ALUMINUM WINDOW TRIM | 13 FINISHED GRADE | 22 ALUMINUM CLAD POST |
| 5 BRICK VENEER | 14 CONCRETE FOUNDATION | 23 GABLE DECORATION |
| 6 STONE VENEER | 15 CONCRETE FOOTING | |
| 7 WOOD GRAIN HORIZONTAL SIDING | 16 PREFINISHED ALUMINUM FRIEZE BOARD | |
| 8 PREFINISHED HORIZONTAL SIDING | 17 PREFINISHED ALUMINUM CORNER TRIM | |
| 9 PREFINISHED ALUMINUM SIDING | 18 PREFINISHED ALUMINUM CORNER TRIM | |

No.	Date	Description
1	2025.05.07	ISSUED FOR SPA



1 FRONT ELEVATION
A2.09 1/8" = 1'-0"

2 RIGHT SIDE ELEVATION
A2.09 1/8" = 1'-0"

3 REAR ELEVATION
A2.09 1/8" = 1'-0"

4 LEFT SIDE ELEVATION
A2.09 1/8" = 1'-0"

GENERAL NOTES

- PROVIDE GUARDS (CONFORMING TO DIV. B, PART 9.8.8 OF THE 2012 O.B.C. AND SB-7 TYPE GUARDS FOR HOUSING AND SMALL BUILDINGS) AT PORCH WHERE DISTANCE FROM PORCH TO GRADE IS 2'-0" OR GREATER.
- FOR WALK-OUT LOTS, STEP FOUNDATION AS REQUIRED FOR PROPOSED GRADES, ENSURING A MAXIMUM 4'-0" OF LATERALLY UNSUPPORTED WALL.
- WINDOW SIZES SHOWN ARE APPROXIMATE. EXACT ROUGH OPENINGS TO BE DETERMINED BY WINDOW MANUFACTURERS SPECIFICATIONS.
- WHERE PATIO/TERRACE DOOR THRESHOLD IS GREATER THAN 2'-0" ABOVE FINISHED GRADE, PROVIDE SB-7 GUARD OR PROVIDE BLOCKING TO PREVENT DOOR FROM OPENING MORE THAN 4".

MATERIAL LEGEND

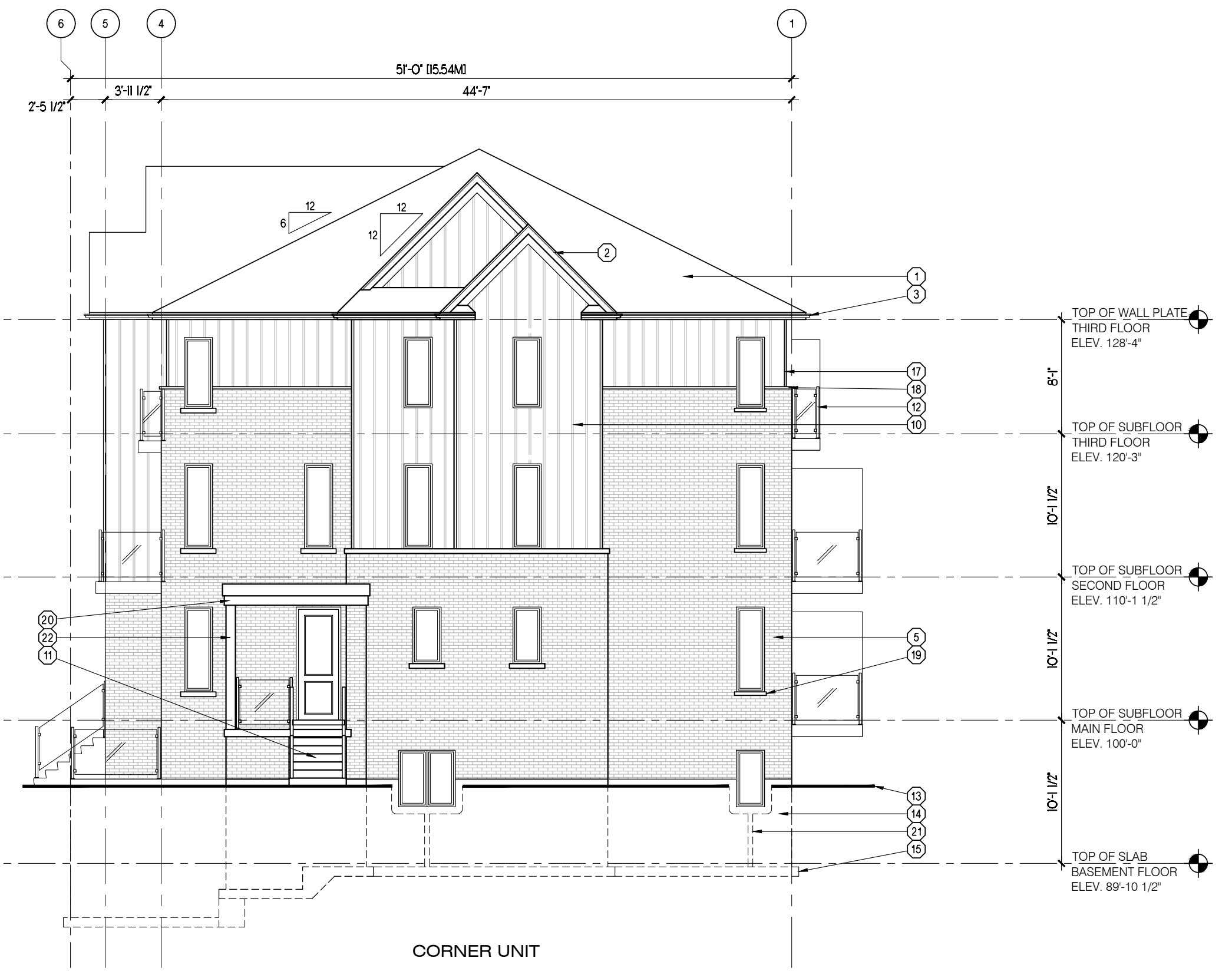
- | | | |
|---|--|--|
| 1 ASPHALT SHINGLES | 10 BOARD AND BATTEN SIDING | 19 3" PRECAST CONCRETE SILL |
| 2 1 1/2" x 3/4" BREAK IN ALUMINUM FASCIA | 11 PRECAST CONCRETE ENTRY STEPS (AS REQUIRED BY GRADE) | 20 PREFINISHED ALUMINUM PORCH BEAM |
| 3 PREFINISHED ALUMINUM EAVESTROUGH, FASCIA AND SOFFIT | 12 PRE-ENGINEERED METAL RAILING AS PER MANUFACTURER | 21 GALVANIZED METAL WINDOW WELL (AS REQUIRED DRAIN TO WEeping LIE) |
| 4 PREFINISHED ALUMINUM WINDOW TRIM | 13 FINISHED GRADE | 22 ALUMINUM CLAD POST |
| 5 BRICK VENEER | 14 CONCRETE FOUNDATION | 23 GABLE DECORATION |
| 6 STONE VENEER | 15 CONCRETE FOOTING | |
| 7 WOOD GRAIN HORIZONTAL SIDING | 16 PREFINISHED ALUMINUM FRIEZE BOARD | |
| 8 PREFINISHED HORIZONTAL SIDING | 17 PREFINISHED ALUMINUM CORNER TRIM | |
| 9 ARCHITECTURAL PANEL SYSTEM | 18 CONTINUOUS CONCRETE SILL | |



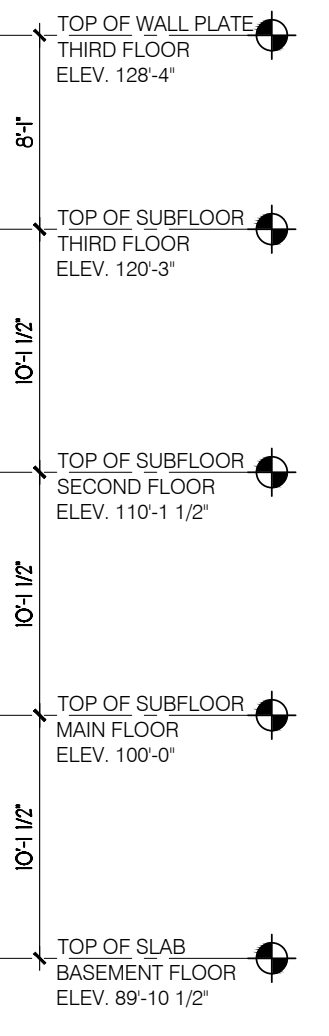
No.	Date	Description
1	2025.05.07	ISSUED FOR SPA



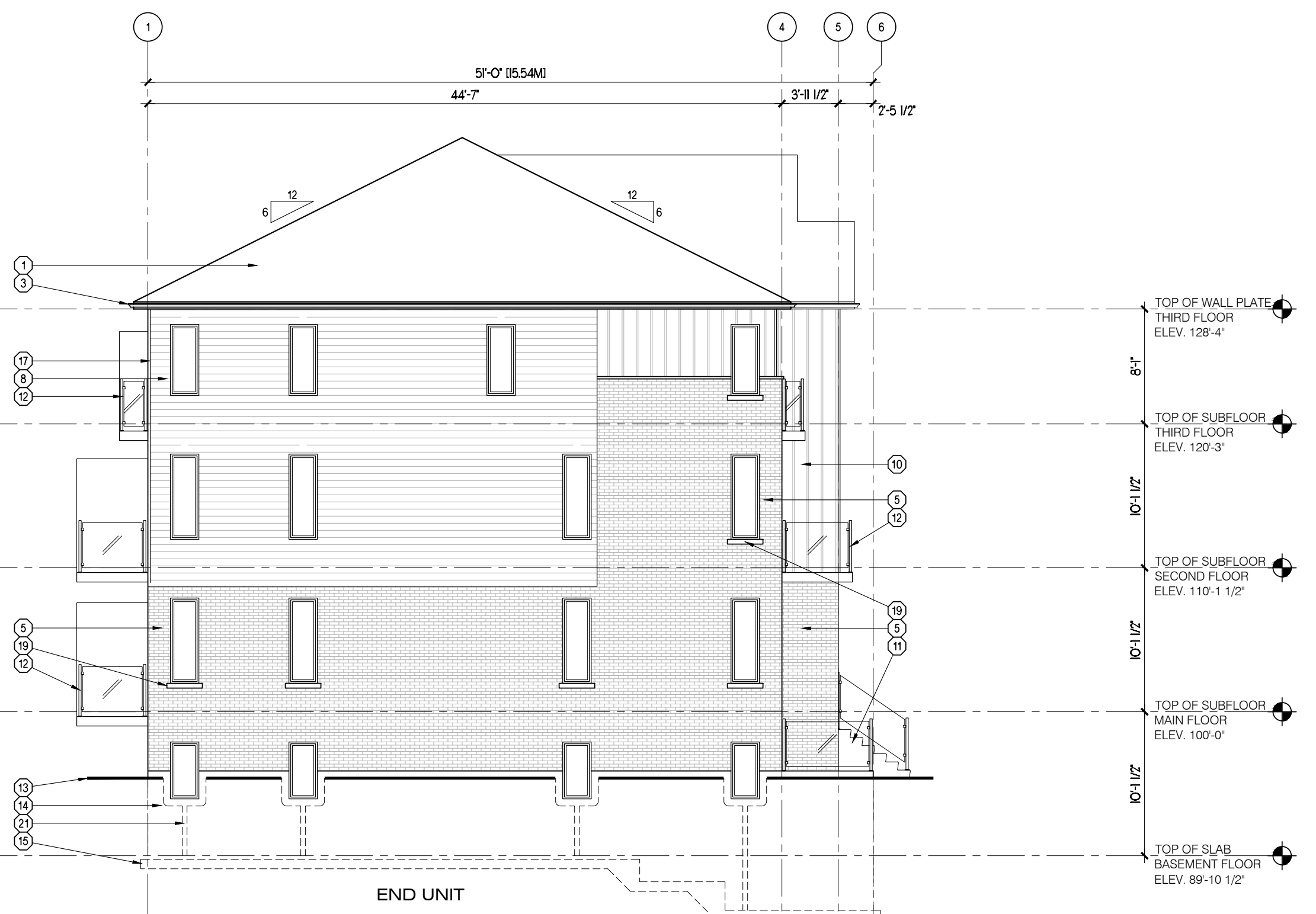
1 FRONT ELEVATION
A2.10 1/8" = 1'-0"



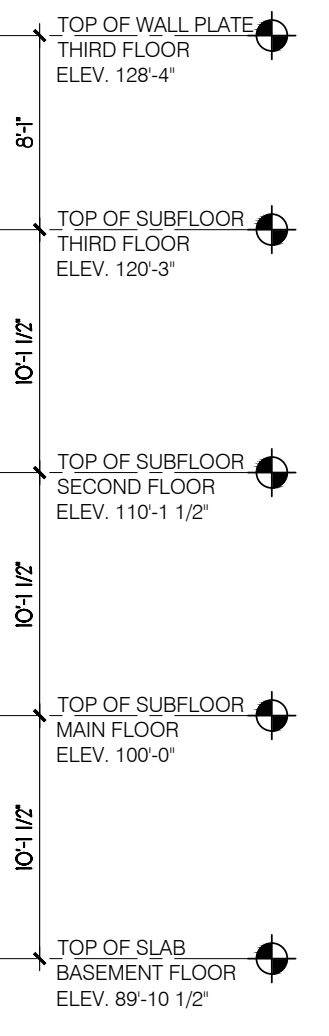
2 RIGHT SIDE ELEVATION
A2.10 1/8" = 1'-0"



3 REAR ELEVATION
A2.10 1/8" = 1'-0"



4 LEFT SIDE ELEVATION
A2.10 1/8" = 1'-0"



GENERAL NOTES

- PROVIDE GUARDS (CONFORMING TO DIV. B, PART 9.8.8 OF THE 2012 O.B.C. AND SB-7 TYPE GUARDS FOR HOUSING AND SMALL BUILDINGS) AT PORCH WHERE DISTANCE FROM PORCH TO GRADE IS 2'-0" OR GREATER.
- FOR WALK-OUT LOTS, STEP FOUNDATION AS REQUIRED FOR PROPOSED GRADES, ENSURING A MAXIMUM 4'-0" OF LATERALLY UNSUPPORTED WALL.
- WINDOW SIZES SHOWN ARE APPROXIMATE. EXACT ROUGH OPENINGS TO BE DETERMINED BY WINDOW MANUFACTURERS SPECIFICATIONS.
- WHERE PATIO/TERRACE DOOR THRESHOLD IS GREATER THAN 2'-0" ABOVE FINISHED GRADE, PROVIDE SB-7 GUARD OR PROVIDE BLOCKING TO PREVENT DOOR FROM OPENING MORE THAN 4".

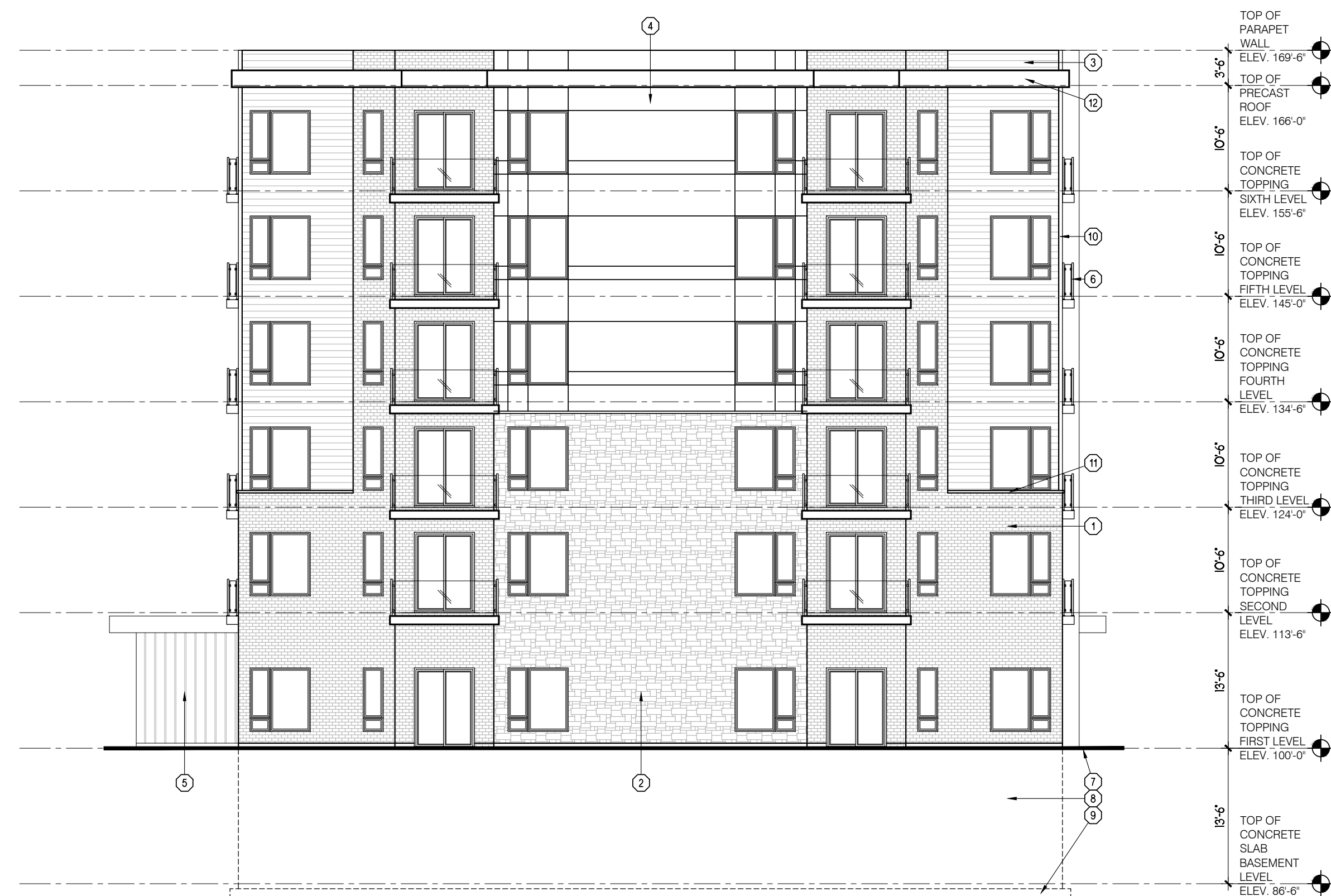
MATERIAL LEGEND

- | | | |
|---|---|---|
| ① ASPHALT SHINGLES | ⑩ BOARD AND BATTEN SIDING | ⑲ 3" PRECAST CONCRETE SILL |
| ② 1 1/2" x 3/4" BREAK IN ALUMINUM FASCIA | ⑪ PRECAST CONCRETE ENTRY STEPS (AS REQUIRED BY GRADE) | ⑳ PREFINISHED ALUMINUM PORCH BEAM |
| ③ PREFINISHED ALUMINUM EAVESTROUGH, FASCIA AND SOFFIT | ⑫ PRE-ENGINEERED METAL RAILING AS PER MANUFACTURER | ㉑ GALVANIZED METAL WINDOW WELL (AS REQUIRED DRAIN TO WEeping LIE) |
| ④ PREFINISHED ALUMINUM WINDOW TRIM | ⑬ FINISHED GRADE | ㉒ ALUMINUM CLAD POST |
| ⑤ BRICK VENEER | ⑭ CONCRETE FOUNDATION | ㉓ GABLE DECORATION |
| ⑥ STONE VENEER | ⑮ CONCRETE FOOTING | |
| ⑦ WOOD GRAIN HORIZONTAL SIDING | ⑯ PREFINISHED ALUMINUM FRIEZE BOARD | |
| ⑧ PREFINISHED HORIZONTAL SIDING | ⑰ PREFINISHED ALUMINUM CORNER TRIM | |
| ⑨ ARCHITECTURAL PANEL SYSTEM | ⑱ CONTINUOUS CONCRETE SILL | |

P:\1-Projects\1-RCI\20_RESIDENTIAL\20_Small-Bldg_3\Pine Valley Homes\16142_9332 County Road 93_Midland\Design Development\



1 FRONT ELEVATION
A2.11 3/32" = 1'-0"



2 RIGHT SIDE ELEVATION
A2.11 3/32" = 1'-0"

GENERAL NOTES

1. PROVIDE GUARDS (CONFORMING TO DIV. B, PART 9.8.8 OF THE 2012 O.B.C. AND SB-7 TYPE GUARDS FOR HOUSING AND SMALL BUILDINGS) AT PORCH WHERE DISTANCE FROM PORCH TO GRADE IS 2'-0" OR GREATER.
2. FOR WALK-OUT LOTS, STEP FOUNDATION AS REQUIRED FOR PROPOSED GRADES, ENSURING A MAXIMUM 4'-0" OF Laterally UNSUPPORTED WALL.
3. WINDOW SIZES SHOWN ARE APPROXIMATE. EXACT ROUGH OPENINGS TO BE DETERMINED BY WINDOW MANUFACTURERS SPECIFICATIONS.
4. WHERE PATIO/TERRACE DOOR THRESHOLD IS GREATER THAN 2'-0" ABOVE FINISHED GRADE, PROVIDE SB-7 GUARD OR PROVIDE BLOCKING TO PREVENT DOOR FROM OPENING MORE THAN 4".

MATERIAL LEGEND

- | | |
|--|-------------------------------------|
| 1 BRICK VENEER | 9 CONCRETE FOOTING |
| 2 STONE VENEER | 10 PREFINISHED ALUMINUM CORNER TRIM |
| 3 PREFINISHED HORIZONTAL SIDING | 11 CONTINUOUS CONCRETE SILL |
| 4 ARCHITECTURAL PANEL SYSTEM | 12 ALUMINUM BAND |
| 5 BOARD AND BATTEN SIDING | |
| 6 PRE-ENGINEERED METAL RAILING AS PER MANUFACTURER | |
| 7 FINISHED GRADE | |
| 8 CONCRETE FOUNDATION | |



Designer Information
I, COREY WEHRLI, review and take responsibility for the design work on behalf of Orchard Design Studio Incorporated registered under Firm BCIN: 28615

C. Wehrl
Signature Individual BCIN: 37253

User Defined

Project Information



PINE VALLEY ESTATES
COUNTY ROAD 93 TOWNHOUSES
9332 COUNTY ROAD 93
MIDLAND, ONTARIO

Set Issuance

No.	Date	Description
1	2025.05.07	ISSUED FOR SPA

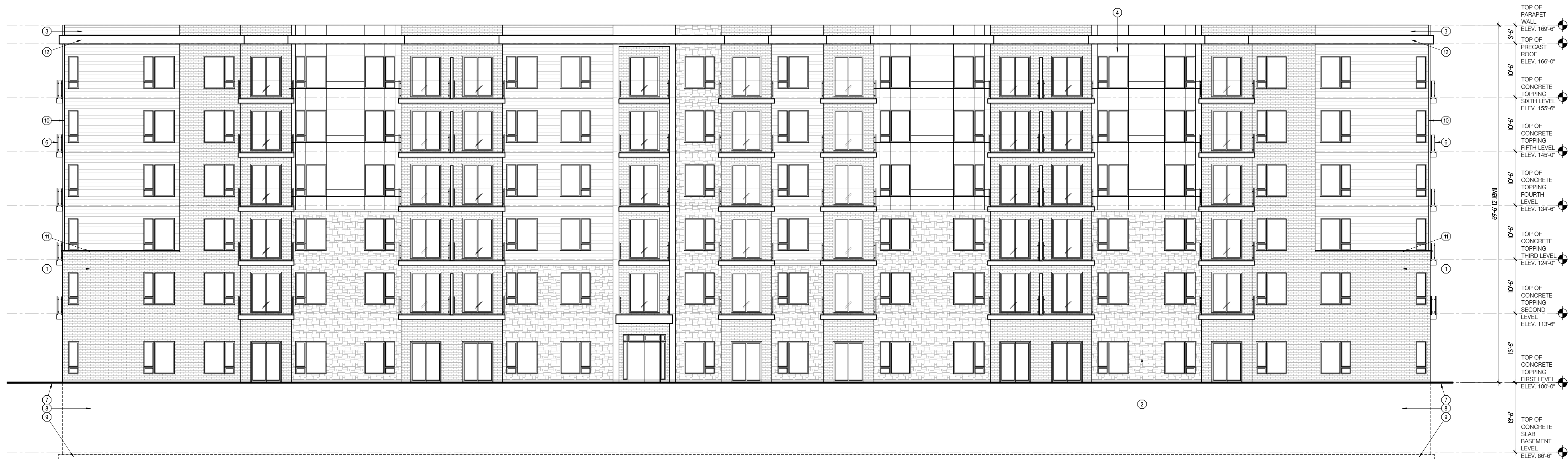
Sheet Information

APARTMENT ELEVATIONS

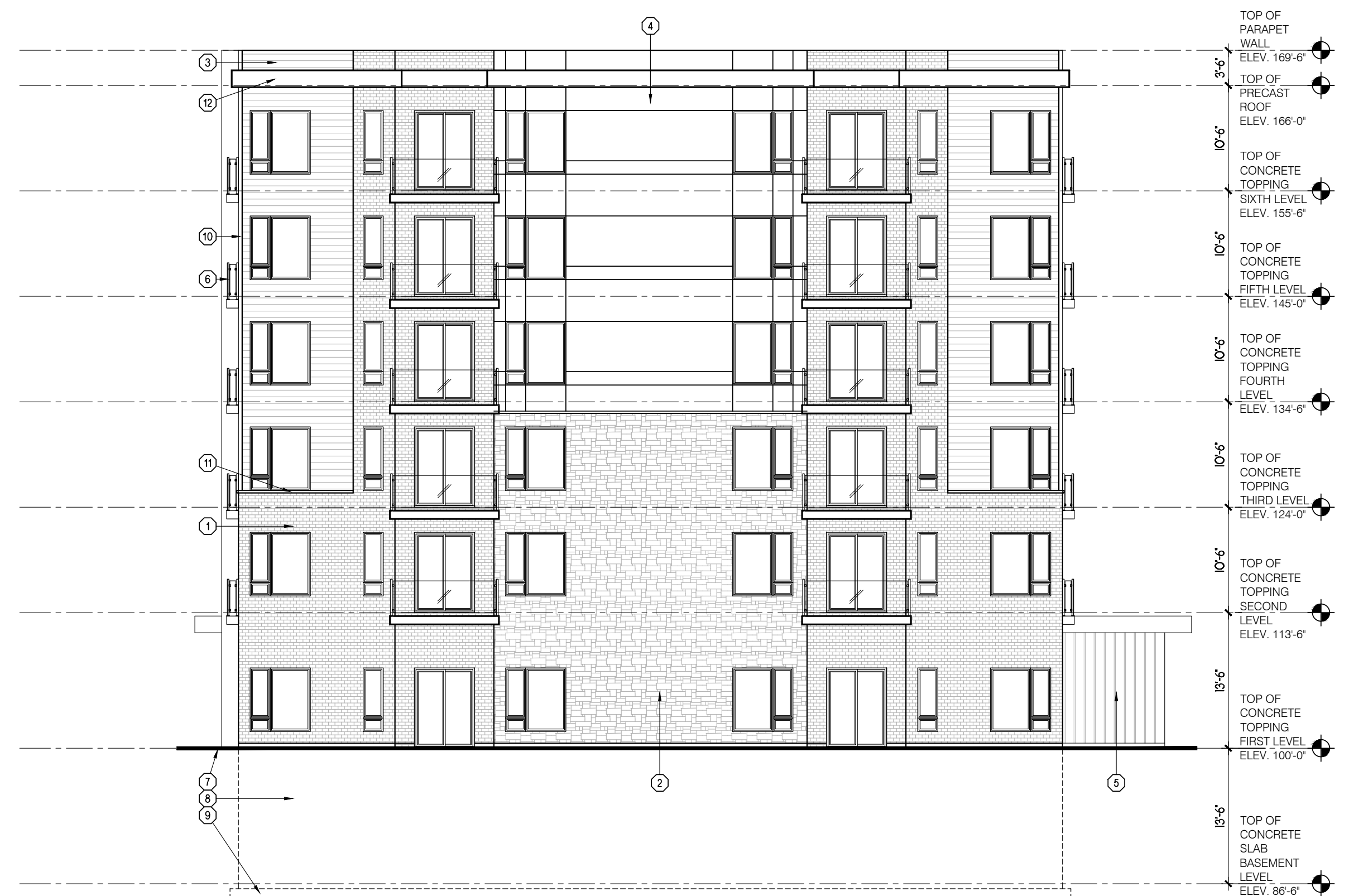
Project No. 16142
Project Start Date: 2025.04.30
File: 2025.05.08 - Apartments - SPA.dwg
Drawn by: MGL
Scale: 3/32" = 1'-0"

SPA

A2.11
Plot Date | Time - 5/8/2026 11:17:02 AM



1 REAR ELEVATION
A2.12 3/32" = 1'-0"



2 LEFT SIDE ELEVATION
A2.12 3/32" = 1'-0"

GENERAL NOTES

1. PROVIDE GUARDS (CONFORMING TO DIV. B, PART 9.8.8 OF THE 2012 O.B.C. AND SB-7 TYPE GUARDS FOR HOUSING AND SMALL BUILDINGS) AT PORCH WHERE DISTANCE FROM PORCH TO GRADE IS 2'-0" OR GREATER.
2. FOR WALK-OUT LOTS, STEP FOUNDATION AS REQUIRED FOR PROPOSED GRADES, ENSURING A MAXIMUM 4'-0" OF Laterally UNSUPPORTED WALL.
3. WINDOW SIZES SHOWN ARE APPROXIMATE. EXACT ROUGH OPENINGS TO BE DETERMINED BY WINDOW MANUFACTURERS SPECIFICATIONS.
4. WHERE PATIO/TERRACE DOOR THRESHOLD IS GREATER THAN 2'-0" ABOVE FINISHED GRADE, PROVIDE SB-7 GUARD OR PROVIDE BLOCKING TO PREVENT DOOR FROM OPENING MORE THAN 4".

MATERIAL LEGEND

- | | |
|--|-------------------------------------|
| 1 BRICK VENEER | 9 CONCRETE FOOTING |
| 2 STONE VENEER | 10 PREFINISHED ALUMINUM CORNER TRIM |
| 3 PREFINISHED HORIZONTAL SIDING | 11 CONTINUOUS CONCRETE SILL |
| 4 ARCHITECTURAL PANEL SYSTEM | 12 ALUMINUM BAND |
| 5 BOARD AND BATTEN SIDING | |
| 6 PRE-ENGINEERED METAL RAILING AS PER MANUFACTURER | |
| 7 FINISHED GRADE | |
| 8 CONCRETE FOUNDATION | |



Designer Information
I, COREY WEHRLE, review and take responsibility for the design work on behalf of Orchard Design Studio Incorporated registered under Firm BCIN: 28615

Signature: *C. Wehrle*
Individual BCIN: 37253

User Defined

Project Information



PINE VALLEY ESTATES
COUNTY ROAD 93
TOWNHOUSES
9332 COUNTY ROAD 93
MIDLAND, ONTARIO

Set Issuance

No.	Date	Description
1	2025.05.07	ISSUED FOR SPA

Sheet Information

APARTMENT ELEVATIONS

Project No. 16142
Project Start Date: 2025.04.30
File: 2025.05.08 - Apartments - SPA.dwg
Drawn by: MGL
Scale: 3/32" = 1'-0"

SPA

A2.12